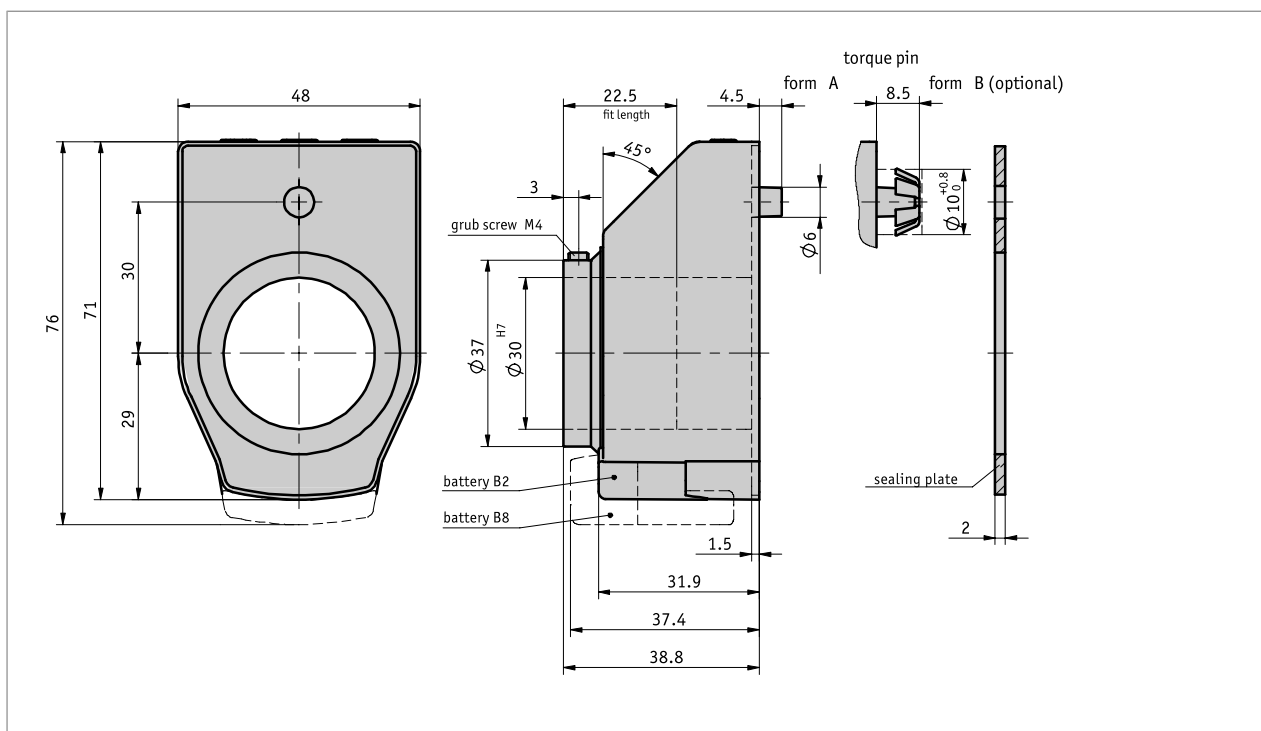


Profile

- Freely programmable electronic digital display for length or angular measurement
- Freely programmable via the ProToolDE programming software
- Hollow shaft, max. \varnothing 30 mm
- LCD display with 5 digits and special characters
- Digit height approx. 12 mm
- Reset, incremental measurement, offset via keyboard
- Long battery life
- Easy battery change without dismantling of the device



Mechanical data

Feature	Technical data	Additional information
shaft	Burnished steel (plain bearing)	($\leq \varnothing 30H7$)
Housing	plastic	
Speed	$\leq 600 \text{ min}^{-1}$	(100% duty cycle)
Weight	$\sim 0.1 \text{ kg}$	

Electrical data


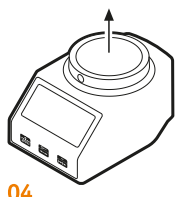


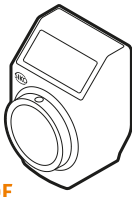

Feature	Technical data	Additional information
Battery	lithium coin cell, 3 V, CR2032 type	~ 2 -year service life
	lithium coin cell, 3 V, CR2477 type	~ 8 -year service life
Display/display range	5-digit LCD 7-segment, $\sim 8 \text{ mm}$ height	-19999 ... 99999

Ambient conditions

Feature	Technical data	Additional information
Ambient temperature	-10 ... 60 °C	
Storage temperature	-30 ... 80 °C	
EMC	EN 61000-6-2 EN 61000-6-4	interference resistance / immission emitted interference / emission
Protection category	IP51	EN 60529
Shock resistance	300 m/s ² , 15 ms	EN 60068-2-27
Vibration resistance	<100 m/s ² , 5 ... 150 Hz 200 m/s ² , 100 ... 2 kHz	EN 60068-2-6 EN 60068-2-6

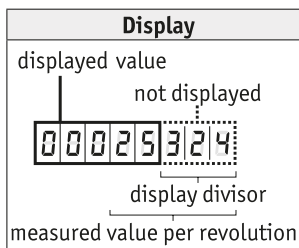
Order

Ordering information

Mounting position		Key pad operation			Counting direction
 02	 04	 D/V	 K	 OF	

Note: Highlights in orange are order features.

Ordering information




Display divisor

The indication of the measured value on the display can be influenced by means of the divisor (divider). The divisor shifts figures of the measured value into the invisible sector of the display unit. Although the figures are not displayed, they are also calculated by the electronics unit and mathematically rounded.

Calculation of value displayed (example order text):

Measured value per revolution	25324
Display divisor	1000

Feature	Displayed value	Measured value
1st revolution	25	25324
2nd revolution	51	50648
3rd revolution	76	75972

 Please note that the value displayed (=measured value per revolution / display divisor) must be at least 2!

Ordering table

Feature	Ordering data	Spezifikation	Additional information
Mounting position*	A 02 04	horizontal spindle vertical spindle	
Measured value per revolution*	B ... W3600 Z3600	00002 ... 90000 angle mode 0° ... 360°, resolution 0.1° angle mode -180° ... +180°, resolution 0.1°	"only with comma position "1"" "only with comma position "1""
decimal place*	C 0 1 2 3	0 = 00000 1 = 0000.0 2 = 000.00 3 = 00.000	
Display divisor*	D ...	1, 10, 100, 1000	see calculation of displayed value
Counting direction*	E i e	clockwise ascending values counter-clockwise ascending values	
key pad operation	F D V K OF	direct zeroing* zeroing delayed by 5 s* only incremental measurement function without function keys	
hollow shaft/diameter	G 30	ø30 mm	

Electronic position indicator DE10

For large shaft diameters

Feature	Ordering data	Spezifikation	Additional information
	20 ...	ø20 mm RH16, RH22, RH24, RH25, RH25.4, RH26 others on request	reducing bushes
Color	H 0 S	orange RAL 2004 black RAL 9005	
Battery	I B2 B8	~2-year service life ~8-year service life	observe technical drawing

* Programmable via ProTool DE programming software

Order key



Scope of delivery:

DE10, Installation Instructions



Accessories you can find:

Pneumatic clamping plate KP09P
Clamping plate KPL09
Programming software ProTool DE
Adapter sleeve RH

www.siko-global.com
www.siko-global.com
www.siko-global.com
www.siko-global.com