

Innovation in alarm & signal

CATALOGUE 2018.02
Vessels and Heavy-Duty &
Equipment/
Explosion Proof



Company Introduction



Qlight Gives You a Brighter Future!

Qlight has been a world-leading provider of visual and audible status indicating systems and solutions for the last three decades. We pride ourselves in developing products which help our customer's improve productivity, safety, and quality control in the industrial automation and commercial industries. Our strong dedication to innovative products, quality assurance, well-established supply chain, customizable manufacturing and strong customer relationships have helped us earn the top market share in Korea and China. These core values have also been fundamental to our continued growth into new markets. Qlight's products are certified by the International Quality Management System (ISO14001), IECEX, ATEX, UL, NEPSI, CE, Lloyd, KIMM, and KOSHA which display our dedication to strin-

gent quality control and product development based on safety-pursuing industry standards.

Our assembly lines in Busan, South Korea and Shanghai, China presently provide a variety of more than 450 of products to more than 40 countries, based on sales offices in South Korea (Seoul, Busan) China (Shanghai, Shenzhen, Shenyang, Tianzhen, Tianjin, Wenzhou), and the U.S. (Silicon Valley). The Qlight brand reflects 30 years of research and development, certification, and manufacturing experience.

We will continue to establish ourselves as an industry-leading provider by pushing the boundaries of technology in order to enhance our customer's efficiency and safety in every industry and region of the world.



Qlight Global Networks

Country	Company name	Address	Phone
Korea	Qlight Co., Ltd.	HQ A-412, 579, Gyeongin-ro, Guro-gu, Seoul, Korea	+82-80-328-2222
		Factory 185-25, Mukbang-Ro, Sangdong-Myeon, Gimhae-si, Gyeongsangnamdo, Korea	+82-80-328-1111
USA	Qlight USA, Inc.	#341, 3003 North First St., San Jose, CA 95134 USA	+1-408-519-5740
China	SHANGHAI Qlight Electronics Co.,Ltd	#19, Nanda Road, Baoshan Area, Shanghai, China	+86-21-6651-7100

Qlight Clients Heavy industry / Ship building / Automotive / Steel / Machinery / Petrochemical / Power plants / Electronics / Semiconductor / Emergency Vehicles



Company History

Qlight has been striving to accomplish our mission to provide visual and audible status indicating systems and solutions to enhance our customer's work safety and efficiency for the last three decades.

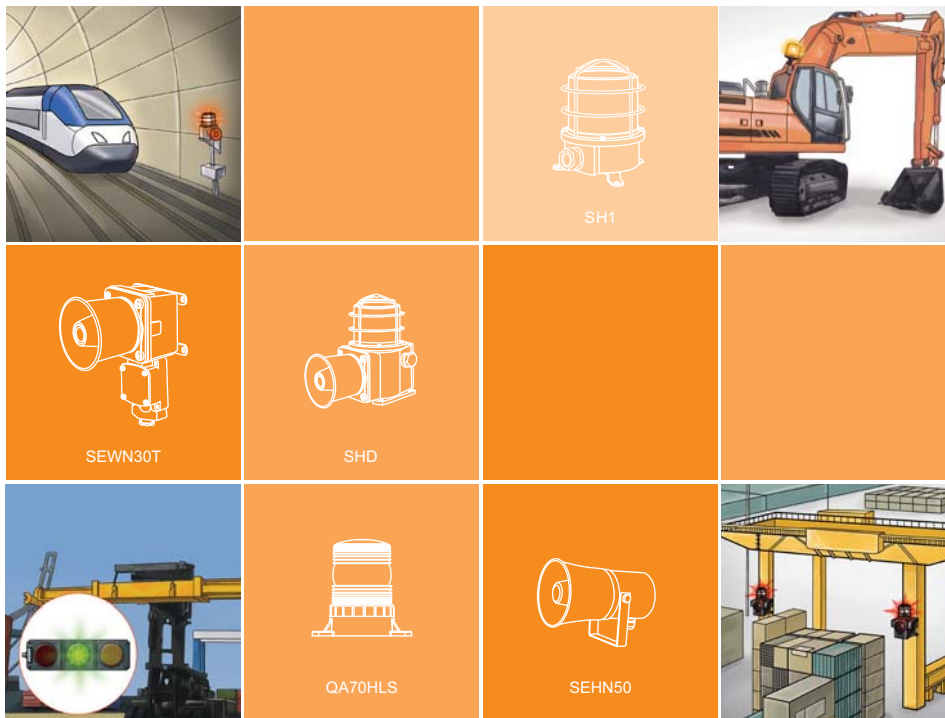


2017	08	ISO 14001 : 2015 certificate aquired
	02	Obtained ICAO certification for SAOL1
2016	11	Obtained the patent for "multi-functional modular signal tower light" (Patent # : 10-1676863)
	09	Obtained the patent for "Emergency Vehicle Lightbar" (Patent # : 10-1662283)
	07	Obtained UL certificate for LED signal lights Q series
		Obtained the patent for "Bar style LED work lights" (Patent # : 10-1598123)
2015	09	The second headquarter factory built
	06	Limit switch models (3 items including SW2TS) aquired certificates from RMRS
	03	LED work lights (QML150/250, QMFL 500/600) UL listed
2014	10	Established the Qlight USA, Inc. in San Jose, CA.
		Horn which that emits light patented (Patent # : 10-1452447)
		Fan/ tilt type bracket patented (Patent # : 10-1452445)
	09	LED strobe light with multi-lens patented (Patent # : 10-1444391)
	08	Explosion proof product family including SNE, SNES, SESA, SEA, SPNA aquired IECEx certificates
	06	Selected as a promising export company by Small & Medium Business Admin., Korea
	01	Non-sparking explosion proof tower lights including ST45ML and STB45ML aquired KGS and NEPSI certificates
2013	01	Portable warning lights for agricultural machine applications patented (Patent # : 10-1226959)
2012	12	Explosion proof warning lights (SNE, SNES) aquired CCS certificates
		LED work light with cylindrical lens attached patented (Patent # : 10-1219020)
	09	Explosion proof warning lights (SESA, SEA, SPNA) and heavy-duty warning lights (SH1, SED, SEWN30) certified by CCS
	01	LED warning light with LED reflector patented (Patent # : 10-1108102)
2011	11	SNE, SNES certified by NEPSI, SNE, SNES, SESA, SEA, SPNA certified by KOSHA
	08	KCC (Korea Communications Commission) certificate aquired
	07	Light equipment applying prism system patented (Patent # : 10-1051056)
2010	05	QEB certified by KIMM
		LED warning light, bulb revolving warning light patented (Patent # : 10-0961472)
	03	Research and development center established
2009	12	SSEL certified by KIMM
		LED tower lights compliant with the RoHS directive
2008	04	Motor drive system patented (Patent # : 20-0439536)
	03	LED revolving type lens patent aquired (patent # :10-0808669)
2007	11	Explosion proof electric horn (SPNA) aquired NEPSI certificates
	05	Tower light models including ST45, ST56,ST80) UL listed
2005	07	Heavy-duty products for vessel applications aquired Lloyd's (UK's Maritime Classification Society) certificates
	04	ABS certificates aquired for 18 products including SH1
2004	06	ISO 9001:2000 certificates aquired
2001	02	Established Shanghai Qlight Electronic Co.,Ltd. in China
2000	07	Established Qlight Limited
1993	11	Nominated for developing domestic explosion proof warning lights by Korean Ministry of Science & Technology
1988	03	Developed limit switches for vessel applications
1986	07	Established Qlight

CATALOGUE

Signaling Products for Vessels and Heavy Industry Applications

INNOVATION IN ALARM & SIGNAL

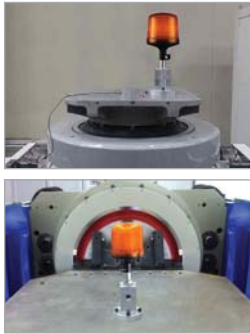


Technical information	4
References	5
Product specifications	10

Technical Data of Heavy-Duty Products

Vibration and Shock of Heavy-Duty Products

Heavy-duty products must be tested by strict standards to withstand heavy vibration and shock environments.



Vibration Standard

- Test is conducted in 3 directions X, Y, Z, at 15g acceleration, frequency band 10Hz-200Hz (1.0 octave/ min), and 10mm maximum amplitude for four hours in Z direction and two hours in the X, Y direction. The test should be conducted for a total 8 hours. There should be no cracks on the exterior of the product or breakage, separation of components after the test, and should operate normally for two hours at its rated voltage.

Shock Standard

- Test is conducted in 3 directions X, Y, Z, at 100g impact acceleration for a 11ms duration. There should be no cracks on the exterior of the product or breakage, separation of components after the test, and should operate normally for two hours at its rated voltage.

Material Characteristics

Vessels and heavy-duty products require vibration, shock and corrosion resistant materials

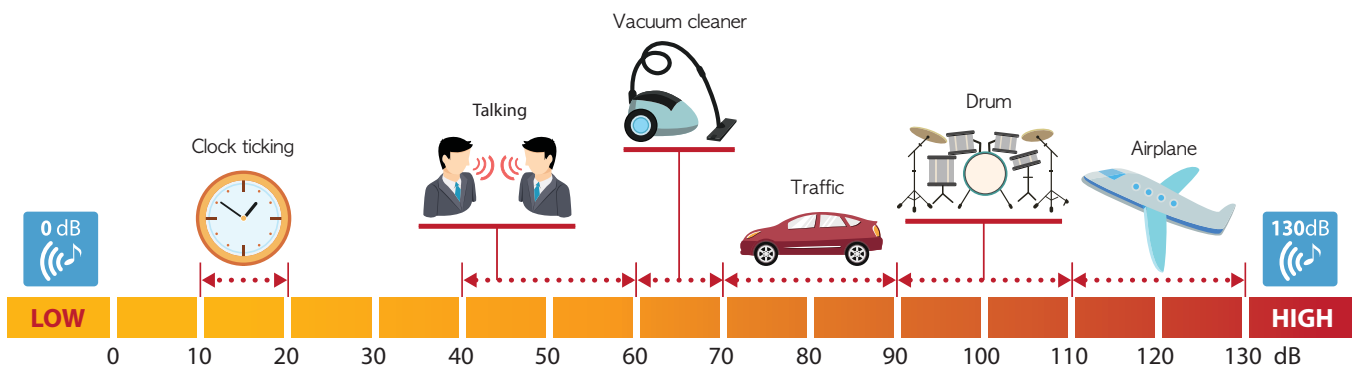


The characteristics of the materials that are mainly used in Qlight products

Material	Abbreviation	Characteristics
ABS resin	ABS	Has opaque gloss on the surface and has excellent shock resistance mainly used on exterior parts use of electrical and electronic components
Polycarbonate	PC	Has a high-strength and high-tensile chemical structure, with great electrical insulation and transparency, Mainly used on components that need impact resistance For example, transparent covers for car parts that requires transparency, and small electrical and electronic components, etc.
Acrylic	PMMA	Has a light transmittance over 90% with a high transparency, and has excellent chemical resistance to the external environment Mainly used for lens covers of interior lighting, and used for the replacement of glass in automobiles, aircraft, and ships
Aluminum	Al	Lightweight and durable, widely used throughout industry for its oxidation resistance Low density, low cost, and corrosion resistance- widely used in aerospace, transportation, architecture, cryogenic, and harsh environments
Bronze	BRASS	Bronze is an alloy of copper and tin. It has greater castability and abrasion resistance Mainly used in arts and crafts, valves, ship plates, statues, springs that require elasticity, parts of machinery, bearing materials, electrical, semiconductor materials
steel use stainless	SUS	The price is expensive compared to ordinary steel but has better corrosion resistance and there is no need for additional surface treatment Mainly used as external parts
Silicon rubber	Q(silicon)	For its cold resistance, heat-resistant, oil resistant, non-toxic, chemical resistance. It is mainly used in defense and aerospace industries, automotive, food containers, etc.
Nitrile rubber	NBR	Excellent resistance to high temperature and lubricant used mainly in oil sealing, gaskets, and oil hoses

Examples of Everyday Noise

In order to transmit sound effectively in noisy environments, products require a sound signaling device with a high volume. The volume of the signaling devices compared with the noise of everyday life is shown below.



Product Specification List for Vessels and Heavy-Duty Equipment/ Industrial Applications



Model number(Series)	QA70HLS	QA100HLS	QA115HLS	QA115HLSP	QA125HLS	QA125HLSP	
Voltage	DC12V-24V	DC12V-24V	DC12V-24V	DC12V-24V	DC12V-24V	DC12V-24V	
Dimension (mm)	Diameter	Ø72	Ø101	Ø107(Lens) Ø150(Housing)	Ø117	Ø123	Ø123
	Height	108	113	112	270	125	321
	Depth						
Materials	Lens-PC Housing-ABS+GF	Lens-PC Housing-ABS	Lens-PC Housing-PC	Lens-PC Housing-PC	Lens-PC Housing-PC	Lens-PC Housing-PC	
Light source & Operation	Bulb Steady/Flashing						
	Bulb Revolving						
	LED Revolving						
	LED Steady/Flashing						
	LED Strobe	•	•	•	•	•	
LED Simulated revolving xenon Strobe							
Mounting structure	Self stand	Self stand	Self stand	Pole mount	Self stand	Pole mount	
Cable entry							
Protection rating	IP66	IP66	IP66	IP66	IP66	IP66	
Certificates	-	CE	-	-	-	-	
Customization							
Page	P10	P10	P11	P11	P12	P12	



Model number(Series)	QA140HLSP	SH1	SH1P	SH1T	SH1TP	
Voltage	DC12V, DC24V	DC12V, DC24V AC110V, AC220V	DC12V, DC24V AC110V, AC220V	DC12V, DC24V AC110V, AC220V	DC12V, DC24V AC110V, AC220V	
Dimension (mm)	Diameter	Ø140	Ø119(Lens)	Ø135(Cage)	Ø119(Lens)	Ø135(Cage)
	Height	325	168	178	168	178
	Depth	-	-	-	234(Length)	234(Length)
Materials	Lens-PC Housing-PC	Lens-PC Housing-Al	Lens-PC Housing-Al	Lens-PC Housing-Al	Lens-PC Housing-Al	
Light source & Operation	Bulb Steady/Flashing					
	Bulb Revolving		•	•	•	
	LED Revolving		•	•	•	
	LED Steady/Flashing		•	•	•	
	LED Strobe	•				
LED Simulated revolving xenon Strobe		•	•	•	•	
Mounting structure	Pole mount	Self stand	Self stand	Self stand	Self stand	
Cable entry	-	1/2"PF	1/2"PF	1/2"PF	1/2"PF	
Protection rating	IP66	IP66	IP66	IP66	IP66	
Certificates	CE, E11	KIMM, ABS, CCS, CE	KIMM, ABS, CCS, CE	CE	CE	
Customization	-	Built-in cable gland, Cable entry : 3/4"PF	Built-in cable gland, Cable entry : 3/4"PF	Built-in cable gland, 2 ways terminal box, cable entry : 3/4"PF	Built-in cable gland, 2 ways terminal box, cable entry : 3/4"PF	
Page	P13-14	P15-21	P15-21	P15-21	P15-21	

Product Specification List for Vessels and Heavy-Duty Equipment/ Industrial Applications



Model number(Series)	SH2	SH2P	SH2T	SH2TP	SSLW	SSLM	
Voltage	DC12V, DC24V AC110V, AC220V	DC12V, DC24V AC110V, AC220V	DC12V, DC24V AC110V, AC220V	DC12V, DC24V AC110V, AC220V	DC12V, DC24V AC110V, AC220V	DC12V, DC24V AC110V, AC220V	
Dimension (mm)	Diameter	Ø138(Lens)	Ø158(Cage)	Ø138(Lens)	Ø158(Cage)	Ø93	Ø93
	Height	198	212	198	212	180-615	180-615
	Depth	-	-	250(Length)	250(Length)	43	43
	Materials	Lens-PC Housing-Al	Lens-PC Housing-Al	Lens-PC Housing-Al	Lens-PC Housing-Al	Lens-PC Housing-Al	Lens-PC Housing-Al
Light source & Operation	Bulb Steady/Flashing						
	Bulb Revolving	•	•	•	•		
	LED Revolving	•	•	•	•		
	LED Steady/Flashing	•	•	•	•	•(Steady)	•(Steady)
	LED Strobe						
LED Simulated revolving xenon Strobe	•	•	•	•			
Mounting structure	Self stand	Self stand	Self stand	Self stand	Wall mount	Wall mount	
Cable entry	1/2"PF	1/2"PF	1/2"PF	1/2"PF	M12-5PIN connector	M12-5PIN connector	
Protection rating	IP66	IP66	IP66	IP66	IP68	IP68	
Certificates	KIMM, ABS, CE	KIMM, ABS, CE	CE	CE	-	-	
Customization	Built-in cable gland, Cable entry : 3/4"PF, Brass housing	Built-in cable gland, Cable entry : 3/4"PF, Brass housing	Built-in cable gland, 2 ways terminal box, Cable entry : 3/4"PF, Brass housing	Built-in cable gland, 2 ways terminal box, Cable entry : 3/4"PF, Brass housing	C10 cable	C10 cable	
Page	P15-21	P15-21	P15-21	P15-21	P37	P37	



Model number(Series)	SED	SEDP	SD	SDP	SMD	SMDP	
Voltage	DC12V, DC24V AC110V, AC220V	DC12V, DC24V AC110V, AC220V	DC12V, DC24V AC110V, AC220V	DC12V, DC24V AC110V, AC220V	DC12V, DC24V AC110V, AC220V	DC12V, DC24V AC110V, AC220V	
Dimension (mm)	Diameter	Ø119(Lens)	Ø135(Cage)	Ø138(Lens)	Ø158(Cage)	Ø138(Lens)	Ø158(Cage)
	Height	380	390	410	424	462	476
	Depth	175	175	175	175	210	210
	Materials	Lens-PC Housing-Al	Lens-PC Housing-Al	Lens-PC Housing-Al	Lens-PC Housing-Al	Lens-PC Housing-Al	Lens-PC Housing-Al
Light source & Operation	Bulb Steady/Flashing						
	Bulb Revolving	•	•	•	•	•	•
	LED Revolving	•	•	•	•	•	•
	LED Steady/Flashing	•	•	•	•	•	•
	LED Strobe						
LED Simulated revolving xenon Strobe	•	•	•	•	•	•	
Sound pattern / dB	Hi buzzer						
	15 signal sounds	Max 118dB at 1m	Max 118dB at 1m	Max 118dB at 1m	Max 118dB at 1m	Max 120dB at 1m	Max 120dB at 1m
	Voice signal	Max 113dB at 1m	Max 113dB at 1m	Max 113dB at 1m	Max 113dB at 1m	Max 115dB at 1m	Max 115dB at 1m
	30 signal sounds						
	31 signal sounds MP3						
Mounting structure	Wall mount	Wall mount	Wall mount	Wall mount	Wall mount	Wall mount	
Cable entry	1/2"PF	1/2"PF	1/2"PF	1/2"PF	1/2"PF	1/2"PF	
Protection rating	IP66	IP66	IP66	IP66	IP66	IP66	
Certificates	CE, KIMM, KR, CCS, ABS	CE, KIMM, KR, CCS, ABS	CE, KR, KIMM, LR, ABS	CE, KR, KIMM, LR, ABS	-	-	
Customization	Built-in cable gland, 2 ways terminal box, Cable entry : 3/4"PF, External signal sound line	Built-in cable gland, 2 ways terminal box, Cable entry : 3/4"PF, External signal sound line	Built-in cable gland, 2 ways terminal box, Cable entry : 3/4"PF, External signal sound line, Brass housing	Built-in cable gland, 2 ways terminal box, Cable entry : 3/4"PF, External signal sound line, Brass housing	Built-in cable gland, 2 ways terminal box, Cable entry : 3/4"PF, External signal sound line, Brass housing	Built-in cable gland, 2 ways terminal box, Cable entry : 3/4"PF, External signal sound line, Brass housing	
Transistor	NPN type	NPN type	NPN type	NPN type	NPN type	NPN type	
Page	P31	P11	P32	P32	P33	P33	

Product Specification List for Vessels and Heavy-Duty Equipment/ Industrial Applications



Model number(Series)	SCDF	SCDW	SHD	SHDP	SHD2	SHD2P	
Voltage	DC12V, DC24V AC110V, AC220V	DC12V, DC24V AC110V, AC220V	DC12V, DC24V AC110V, AC220V	DC12V, DC24V AC110V, AC220V	DC12V, DC24V AC110V, AC220V	DC12V, DC24V AC110V, AC220V	
Dimension (mm)	Diameter	Ø140(Cage)	Ø140(Cage)	Ø119(Lens)	Ø135(Cage)	Ø119(Lens)	Ø135(Cage)
	Height	322	313	227	237	227	237
	Depth	167(Length)	177	255(Length)	255(Length)	343(Length)	343(Length)
	Materials	Lens-PC Housing-PC+GF	Lens-PC Housing-PC+GF	Lens-PC Housing-Al	Lens-PC Housing-Al	Lens-PC Housing-Al	Lens-PC Housing-Al
Light source & Operation	Bulb Steady/Flashing						
	Bulb Revolving	•	•	•	•	•	•
	LED Revolving	•	•	•	•	•	•
	LED Steady/Flashing	•	•	•	•	•	•
	LED Strobe						
	LED Simulated revolving xenon Strobe	•	•	•	•	•	•
Sound pattern / dB	Hi buzzer						
	15 signal sounds	Max 118dB at 1m	Max 118dB at 1m	Max 118dB at 1m	Max 118dB at 1m	Max 118dB×2 at 1m	Max 118dB×2 at 1m
	Voice signal	Max 113dB at 1m	Max 113dB at 1m	Max 113dB at 1m	Max 113dB at 1m	Max 113dB×2 at 1m	Max 113dB×2 at 1m
	30 signal sounds						
	31 signal sounds MP3						
Mounting structure	Self mount	Wall mount	Self mount	Self mount	Self mount	Self mount	
Cable entry	1/2"PF	1/2"PF	1/2"PF	1/2"PF	1/2"PF	1/2"PF	
Protection rating	IP66	IP66	IP66	IP66	IP66	IP66	
Certificates	KIMM, KR, CE	KIMM, KR, CE	KIMM, ABS, CE	KIMM, ABS, CE	KIMM, ABS	KIMM, ABS	
Customization	Built-in cable gland, Cable entry : 3/4"PF, External signal sound line	Built-in cable gland, Cable entry : 3/4"PF, External signal sound line	Built-in cable gland, Cable entry : 3/4"PF, External signal sound line, Brass housing	Built-in cable gland, Cable entry : 3/4"PF, External signal sound line, Brass housing	Built-in cable gland, Cable entry : 3/4"PF, External signal sound line, Brass housing	Built-in cable gland, Cable entry : 3/4"PF, External signal sound line, Brass housing	
Transistor	NPN Type	NPN Type	NPN Type	NPN Type	NPN Type	NPN Type	
Page	P26-28	P26-28	P22-25	P22-25	P22-25	P22-25	



Model number(Series)	QWCD35	QWCD50	
Voltage	DC12V-DC24V AC110V-220V	DC12V, DC24V AC110V-220V	
Dimension (mm)	Diameter	136×179	168×222
	Height		
	Depth	126	163
Materials	Horn-PC Housing-PC+ABS	Horn-PC Housing-PC+ABS	
Light source & Operation	Bulb Steady/Flashing		
	Bulb Revolving		
	LED Revolving		
	LED Steady/Flashing		
	LED Strobe	•	•
	LED Simulated revolving xenon Strobe		
Sound pattern / dB	Hi buzzer		
	15 signal sounds		
	Voice signal		
	30 signal sounds		
	31 signal sounds MP3	Max 115dB at 1m Max 113dB at 1m	Max 123dB at 1m Max 118dB at 1m
Mounting structure	Wall Mount	Wall Mount	
Cable entry	Ø21	Ø21	
Protection rating	IP66	IP66	
Certificates	CE, UL	CE, UL	
Customization	External signal sound line	External signal sound line	
Transistor	NPN Type	NPN Type	
Page	P39	P40	

Product Specification List for Vessels and Heavy-Duty Equipment/ Industrial Applications



Model number(Series)	QWH35	QWH50	SN	SEHN25	SEHN50	SEWN30E	
Voltage	DC12V-DC24V AC110V-220V	DC12V, DC24V AC110V-220V	DC12V, DC24V AC110V, AC220V	DC12V, DC24V AC110V, AC220V	DC12V, DC24V AC110V, AC220V	DC12V, DC24V AC110V, AC220V	
Dimension (mm)	Diameter	136×179	168×222	Ø119(Horn)	Ø158(Horn)	Ø167(Horn)	Ø120(Horn)
	Height						
	Depth	126	163	167(Length)	238(Length)	242(Length)	175
Materials	Horn-PC Housing-PC +ABS	Horn-PC Housing-PC +ABS	Housing-Steel	Housing-Steel	Housing-Steel	Housing-Al Horn Housing-PC	
	Sound pattern / dB	15 signal sounds Voice signal 30 signal sounds 31 signal sounds MP3	Max 115dB at 1m Max 113dB at 1m	Max 123dB at 1m Max 118dB at 1m	Max 105dB at 1m Max 95dB at 1m	Max 115dB at 1m Max 108dB at 1m	Max 120dB at 1m Max 115dB at 1m Max 118dB at 1m Max 113dB at 1m
Mounting structure	Wall mount	Wall mount	Self stand	Self stand	Self stand	Wall mount	
Cable entry	Ø21	Ø21	Ø10	Ø21	Ø21	1/2"PF	
Protection rating	IP66	IP66	IP55	IP55	IP55	IP56	
Certificates	CE	CE	KIMM	KIMM	KIMM	KIMM, ABS, CCS, CE	
Customization	-	-	External signal sound line	External signal sound line	External signal sound line	Built-in cable gland, Cable entry : 3/4"PF, External signal sound line, Brass housing	
Transistor	NPN type	NPN type	NPN type	NPN type	NPN type	NPN type	
Page	P41-42	P41-42	P43	P43	P44	P46	



Model number(Series)	SEWN30L	SEWN30T	SEWN50E	SEWN50L	SEWN50T	SHDN30	
Voltage	DC12V, DC24V AC110V, AC220V	DC12V, DC24V AC110V, AC220V	DC12V, DC24V AC110V, AC220V	DC12V, DC24V AC110V, AC220V	DC12V, DC24V AC110V, AC220V	DC12V, DC24V AC110V, AC220V	
Dimension (mm)	Diameter	Ø120(Horn)	Ø120(Horn)	Ø172(Horn)	Ø172(Horn)	Ø172(Horn)	Ø120(Horn)
	Height	-	223	-	-	272	134
	Depth	170(Length)	175	208	203(Length)	208	335(Length)
Materials	Housing-Al Horn Housing-PC	Housing-Al Horn Housing-PC	Housing-Al Horn Housing-SUS316L	Housing-Al Horn Housing-SUS316L	Housing-Al Horn Housing-SUS316L	Housing-Al Horn Housing-PC	
	Sound pattern / dB	15 signal sounds Voice signal 30 signal sounds 31 signal sounds MP3	Max 118dB at 1m Max 113dB at 1m	Max 120dB at 1m Max 115dB at 1m	Max 120dB at 1m Max 115dB at 1m	Max 120dB at 1m Max 115dB at 1m	Max 118dB at 1m×2 Max 113dB at 1m×2
Mounting structure	Self stand	Wall mount	Wall mount	Self stand	Wall mount	Self stand	
Cable entry	1/2"PF	1/2"PF	1/2"PF	1/2"PF	1/2"PF	1/2"PF	
Protection rating	IP56	IP56	IP56	IP56	IP56	IP56	
Certificates	CE	CE	CE, KIMM, ABS	CE	CE	-	
Customization	Built-in cable gland, Cable entry : 3/4"PF, External signal sound line, Brass housing	Built-in cable gland, 2 ways terminal box, Cable entry : 3/4"PF, External signal sound line, Brass housing	Built-in cable gland, Cable entry : 3/4"PF, External signal sound line, Brass housing	Built-in cable gland, Cable entry : 3/4"PF, External signal sound line, Brass housing	Built-in cable gland, 2 ways terminal box, Cable entry : 3/4"PF, External signal sound line, Brass housing	External signal sound line, Cable entry : 3/4"PF	
Transistor	NPN Type	NPN Type	NPN Type	NPN Type	NPN Type	NPN Type	
Page	P46	P46	P47	P47	P47	P49	



Model number(Series)	SM30	SM40	SM200	SM400	SAB130	SAB200	
Voltage	DC12V, DC24V AC110V, AC220V	DC12V, DC24V AC110V, AC220V	DC24V AC110V, AC220V	DC24V AC110V, AC220V	DC24V AC110V, AC220V	DC24V AC110V, AC220V	
Dimension (mm)	Diameter	Ø77	Ø128	Ø143	Ø165	Ø130(Bell) Ø200(Bell)	
	Height	-	-	-	-	238	269
	Depth	82(Length)	162(Length)	231(Length)	284(Length)	107	107
Materials	Housing-Steel	Housing-ABS	Housing-Steel	Housing-Steel	Bell-Steel Housing-ABS	Bell-Steel Housing-ABS	
Volume	Max 110dB at 1m	Max 116dB at 1m	Max 120dB at 1m	Max 123dB at 1m	Max 95dB at 1m	Max 95dB at 1m	
Mounting structure	Self stand	Self stand	Self stand	Self stand	Wall mount	Wall mount	
Cable entry	Ø22	Ø22	Ø9	Ø22	Ø26	Ø26	
Protection rating	IP44	IP44	IP44	IP44	IP56	IP56	
Certificates	-	-	CE	-	-	-	
Customization	-	-	-	-	2 ways cable entries	2 ways cable entries	
Page	P50	P50	P51	P51	P52	P52	

Product Specification List for Vessels and Heavy-Duty Equipment/ Industrial Applications



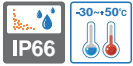
Model number(Series)	SC1	SC2	SC3
Voltage	DC12V, DC24V AC110V, AC220V	DC12V, DC24V AC110V, AC220V	DC12V, DC24V AC110V, AC220V
Dimension (mm)	Diameter	150(Width)	174(Width)
	Height	287	312
	Depth	200	232
Materials	Lens-AS Housing-ABS	Lens-AS Housing-ABS	Lens-PC Housing-AL
Light source & Operation	Bulb Steady/Flashing	•	•
	Bulb Revolving	•	•
	LED Revolving	•	•
	LED Steady/Flashing	•	•
	LED Strobe	•	•
	LED Simulated revolving	•	•
Operation	xenon Strobe	•	•
Sound pattern / dB	Hi buzzer		
	15 signal sounds	Max 108dB at 1m	Max 115dB at 1m
	Voice signal	Max 98dB at 1m	Max 108dB at 1m
	30 signal sounds		
	31 signal sounds		
MP3			
Mounting structure	Wall mount	Wall mount	Wall mount
Cable entry	-	-	1/2"PF
Protection rating	IP44	IP44	IP56
Certificates			
Customization			
Page	P35	P35	P36



Model number(Series)	SANA200	SANA400	SANA700	QEB
Voltage	DC24V AC110V, AC220V	DC24V AC110V, AC220V	DC24V AC110V, AC220V	DC24V AC110V, AC220V
Dimension (mm)	Diameter	Ø146(Horn)	Ø110(Horn)	Ø101(Horn)
	Height	222	222	222
	Depth	333	193	144
Materials	Horn-PC Solenoid Box-ABS	Horn-PC Solenoid Box-ABS	Horn-PC Solenoid Box-ABS	Housing, Cover-AL
Volume	Max 130dB at 1m	Max 130dB at 1m	Max 130dB at 1m	-
Mounting structure	Wall mount	Wall mount	Wall mount	Wall mount
Cable entry	20C, 10C nipple(Air)	20C, 10C nipple(Air)	20C, 10C nipple(Air)	1/2"NPT, 10C nipple(Air)
Protection rating	IP56	IP56	IP56	IP66
Certificates	KIMM	KIMM	KIMM	KIMM
Customization	Separate design between horn and solenoid box, Non return valve, Built-in Y filter	Separate design between horn and solenoid box Non return valve, Built-in Y filter	Separate design between horn and solenoid box, Non return valve, Built-in Y filter	Built-in Ex-Proof cable gland, 2 ways entries, Cable entry : 3/4"NPT
Page	P53	P53	P54	P54

QA70HLS/ QA100HLS

LED Strobe Warning Lights for Heavy-Duty Equipment



QA70HLS-Ø70mm
QA100HLS-Ø100mm



QA70HLS



QA100HLS



Common Specifications(QA70HLS/ QA100HLS)

- Uses Qlight's original high brightness LED diffusion system that allows for operation outdoors in intense sunlight conditions
- Excellent vibration and shock resistant structure for superior durability
- Fully enclosed structure that can withstand storm and severe dust environments (IP66)
- Materials : Lens-PC, Housing-ABS+GF(for QA70HLS)/ ABS(for QA100HLS)
- Ambient operating temperature : -30°C to +50°C
- Protection rating : IP66
- Vibration resistant and shock-proof : can withstand 15g of vibration and 100g of shock



QA70HLS LED Strobe Warning Light

- Mountable with two bolts on the main structure of the warning light for convenient assembly
- Suitable for small agricultural machines
- Flashing rate : 45-55 flashes/min

Model number	Voltage	Current	Certificates	Weight	Color
QA70HLS	DC12V-24V	Max 0.620A	-	0.23kg	<ul style="list-style-type: none"> • R-Red • A-Amber

※ DC type model has a free-voltage range of 10V-30V.



QA100HLS LED Strobe Warning Light

- Flashing rate : 60-80 flashes/min

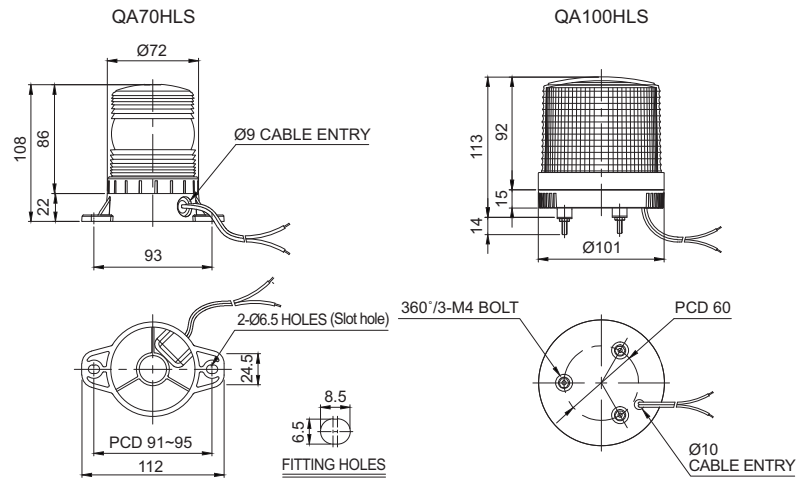
Model number	Voltage	Current	Certificates	Weight	Color
QA100HLS	DC12V-24V	Max 1.200A	CE	0.39kg	<ul style="list-style-type: none"> • R-Red • A-Amber

※ DC type model has a free-voltage range of 10V-30V.



Technical Diagram

(Units : mm)



Wiring Instructions

- QA70HLS Model : External power line standard UL1015 AWG18(0.75sq)×2C 400mm
- QA100HLS Model : External power line standard KSC3304 (0.85sq)×2C 400mm
- Both models can be wired regardless of polarity

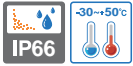


Ordering Specification

QA100HLS	-	12/24	-	R
[Model number]		[Voltage]		[Color]
<ul style="list-style-type: none"> • QA70HLS • QA100HLS 		• 12/24-DC12V-24V		<ul style="list-style-type: none"> • R-Red • A-Amber

QA115HLS series

LED Strobe Warning Lights for Heavy-Duty Equipment



QA115HLS-Ø115mm
QA115HLSP-Ø115mm

Applies Qlight's exclusive patented light diffusion system



QA115HLS



QA115HLSP



Common Specifications(QA115HLS/ QA125HLS)

LED Strobe warning lights for heavy-duty equipment applications, featuring superior luminous efficiency with Qlight's exclusive light diffusion system

- Ability to compensate for signal attenuation phenomenon that occurs during daytime operation with a powerful xenon lamp.
- Can select between pole mount and direct mount type to fit your application needs
- Materials : Lens-PC, Housing-PC
- Ambient operation temperature : -30°C to +50°C
- Protection rating : IP66
- Vibration resistant and shock-proof : Can withstand 15g of vibration and 100g of shock



QA115HLS/ QA115HLSP LED Strobe Warning Lights

- Pole mount type model consists of a shock-proof rubber body; this feature provides excellent durability to vibration and shock
- Flashing rate : 45-55 flashes/min

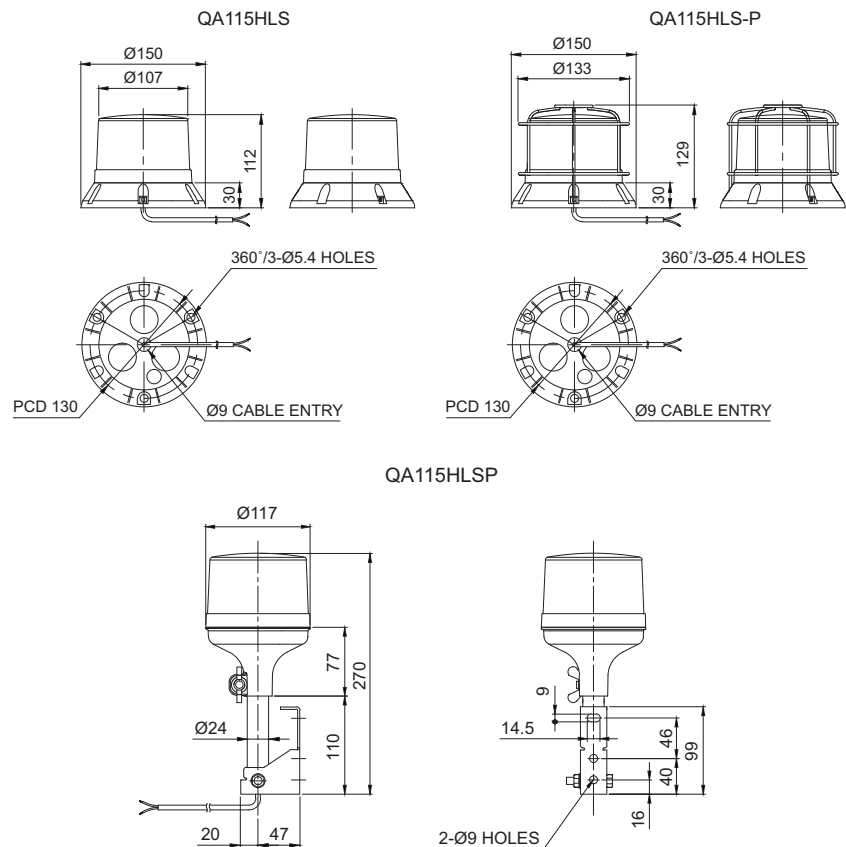
Model number	Voltage	Current	Certificates	Weight	Color
QA115HLS	DC12V-24V	Max 0.730A	-	1.06kg	● R-Red
QA115HLSP				1.22kg	● A-Amber

※ DC type model has a free-voltage range of 10V-30V.



Technical Diagram

(Units : mm)



Ordering Specification

QA115HLSP	-	12/24	-	R
[Model number]		[Voltage]		[Color]
• QA115HLS		• 12/24		• R-Red
• QA115HLSP		• DC12V-24V		• A-Amber



Wiring Instructions

- External power line standard : UL2464 18AWG×2C 400mm
- Product can be wired regardless of polarity

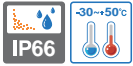


Customization

- User selected connector type available upon request
- Built-in protection cage (QA115HLS-P)

QA125HLS series

LED Strobe Warning Lights for Heavy-Duty Equipment



QA125HLS-Ø125mm
QA125HLSP-Ø125mm



QA125HLS



QA125HLSP



QA125HLS LED Strobe Warning Light

• Flashing rate : 60-80 flashes/min

Model number	Voltage	Current	Certificates	Weight	Color
QA125HLS	DC12V-24V	Max 1.650A	-	0.55kg	<ul style="list-style-type: none"> ● R-Red ● A-Amber

※ DC type model has a free-voltage range of 10V-30V.



QA125HLSP LED Strobe Warning Light

• Flashing rate : 60-80 flashes/min

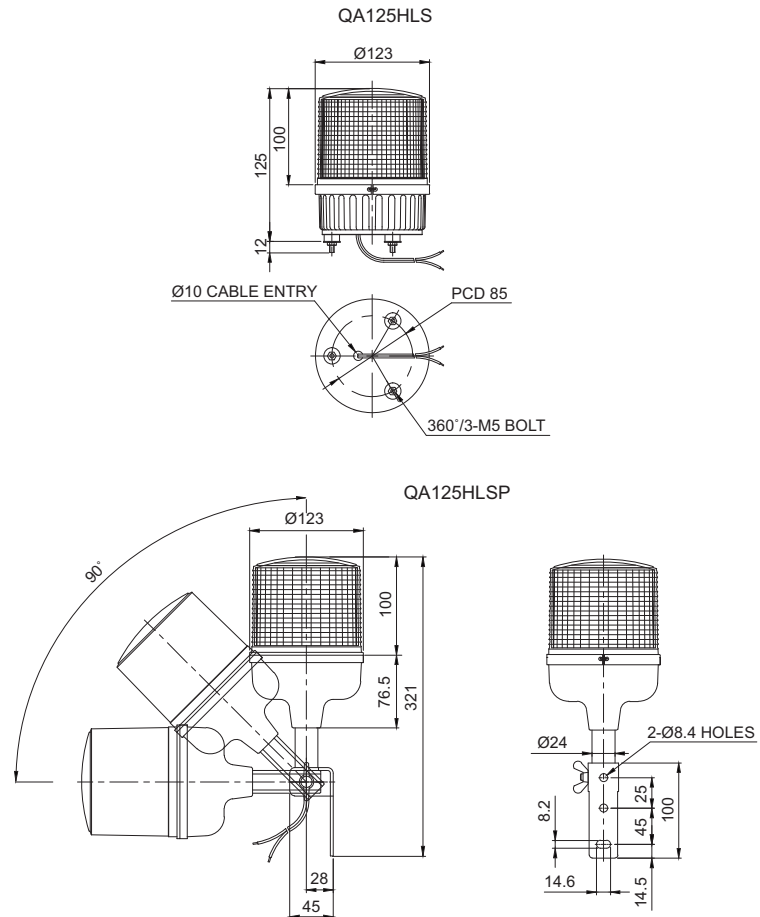
Model number	Voltage	Current	Certificates	Weight	Color
QA125HLSP	DC12V-24V	Max 1.650A	-	1.00kg	<ul style="list-style-type: none"> ● R-Red ● A-Amber

※ DC type model has a free-voltage range of 10V-30V.



Technical Diagram

(Units : mm)



Wiring Instructions

- External power line standard : UL1015 AWG18(0.75sq)×2C 400mm
- Product can be wired regardless of polarity



Ordering Specification

QA125HLS	-	12/24	-	R
[Model number]		[Voltage]		[Color]
<ul style="list-style-type: none"> • QA125HLS • QA125HLSP 		• 12/24-DC12V-24V		<ul style="list-style-type: none"> ● R-Red ● A-Amber

QA140HLSP series

LED Strobe Warning Lights for Heavy-Duty Equipment

- Ø140mm high-intensity LED strobe warning lights for heavy-duty equipment
- Applies Qlight's exclusive patented diffusion lens and reflector system to maximize its light output



Common Specifications(QA140HLSP/ QA140DLSP)

- Applies a special built-in filter to compensate for shortcomings of the LED warning light when attenuation to sunlight in bright outdoor environments occur
- Wide angle filter provides excellent visibility from top to bottom
- Vibration resistant and shock-proof : Can withstand 15g of vibration and 100g of shock
- Pole mount type
- Equipped with angel-adjustable bracket
- Flashing rate : 60-80 flashes/min
- Materials : Housing-PC, Diffusion lens-PC, Lens-PC, Reflector-Heat resistant ABS, Bracket-SUS
- Ambient operating temperature : -30°C to +50°C
- Protection rating : IP66
- Designed for heavy equipment applications
- Certificates : CE Compliant, E11
- Compliant with RoHS directive



QA140HLSP

Superior light output through the Qlight's exclusive diffusion lens and reflector

The inner ring-shaped diffusion lens is specially designed to help minimize the loss of light output. The inner diffusion lens and reflector structure allows for light to be spread both horizontally and vertically for accurate signal light transmission.



Standard Model



High Brightness Model

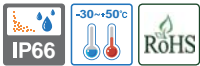
Ensuring visibility with wide angle light output

To compliment the drawbacks of a typical one directional LED, The patented light emitting structure is designed to secure a wide viewing angel. Thus, eliminating potential disadvantages of mounting a typical LED at a higher position. It's design allows for easy visibility at close ranges and high mounting positions.



QA140HLSP series

LED Strobe Warning Lights for Heavy-Duty Equipment



Excellent durability and shockproof by using high hardness PC material for the lens.



Bendable pole structure prevents damage from external impact.

Vibration resistant, shock-proof, dustproof, and waterproof products

Durable and enclosed product structure was produced for direct exposure to the environments of heavy equipment such as vibration and shock, dust and water.

Bendable pole structure prevents damage from external impact

Pole mount product is designed to prevented damage from external impact by bending in the opposite direction when impact occurs.

QA140HLSP LED Strobe Warning Light

Model number	Brightness type	Brightness	Voltage	Current	Certificates	Weight	Color
QA140HLSP	Standard	110Lux	DC12V	0.820A	 DC24V Only	1.16kg	● R-Red ● A-Amber
			DC24V	0.600A			

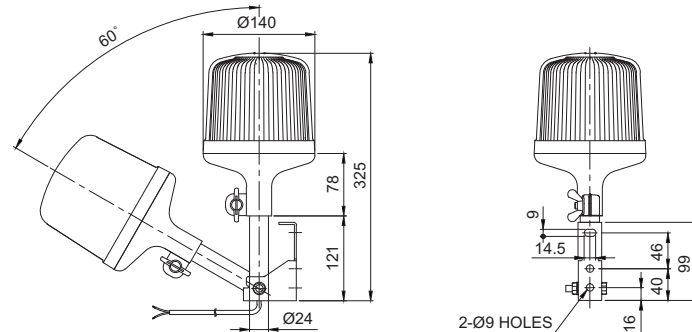
QA140DLSP LED Strobe Warning Light

Model number	Brightness type	Brightness	Voltage	Current	Certificates	Weight	Color
QA140DLSP	High brightness	170Lux	DC12V	1.640A	-	1.18kg	● R-Red ● A-Amber
			DC24V	1.040A			

Technical Diagram

(Units : mm)

QA140HLSP



Wiring Instructions

- External power line standard : KSC3304 0.85sq×2C 400mm
- Product can be wired regardless of polarity

Customization

- Connector type wiring products

Ordering Specification

QA140HLSP	-	12	-	R
[Model number]		[Voltage]		[Color]
• QA140HLSP		• 12-DC12V		• R-Red
• QA140DLSP		• 24-DC24V		• A-Amber

Superior durability with fully enclosed structure and corrosion resistance, suitable for vessels and heavy industry applications

- SH1 series-Ø125mm
- SH2 series-Ø150mm



Common Specifications

- Aluminum housing and polycarbonate lens material provides excellent impact resistance under seismic conditions
- Excellent hermetic structure that blocks water and dust
- Can select a variety of light sources (Bulb, LED, and xenon) for your application needs and environmental conditions
- Terminals located inside the terminal box or product
- Cable entry : 1/2"PF
- Materials : Lens-PC, Housing-Al, Protection cage-SUS316L, Reflector for LED type-PC/ Reflector for bulb type-Heat resistant ABS
- Housing standard color : MUNSELL No. 7.5BG 7/2
- Protection rating : IP66

■ A Variety of Selectable Light Source and Function Combinations

You can select from a variety of light sources for your work environment, condition, and purpose. Basic specifications are as follows :

- LED revolving type
- LED steady/flashing type
- xenon lamp strobe type
- Bulb revolving type

User-selected LED strobe type and LED simulated revolving type are available upon request.

1 Lenses

- Utilizes a strong and durable polycarbonate material with excellent shock and vibration resistance
- The lens surface has two types depending on the light source function-Light diffusion type and light transmission type

Light transmission type		LED revolving type Bulb revolving type	SH()LR SH()
Light diffusion type		LED steady/flashing type xenon lamp strobe type	SH()L/LF SH()S

2 Protection cage

- The durable protection cage is made of corrosion resistant stainless steel that prevents damage to the lens from external contact
- Materials : SUS316L



3 Housing

- The special aluminum body housing features superior durability
- The housing is corrosion resistant from a special anodized surface treatment process
- Materials : Al

4 Fully enclosed structure

- The tightly sealed warning light structure is waterproof and dustproof
- Protection rating : IP66

5 Terminal box

- Terminal box is located on the side of housing for easy wiring
- Materials : Al

6 Brackets

- Stainless steel mounting bracket is conveniently attached to the outer surface of the product
- Materials : SUS

SH1/SH2 series Product Categories



Standard model

- Protection cage or terminal box not attached
- Terminals located inside the housing
- Use in environments that has low probability of damage to the lens due to external forces
- SH1/SH2 series is available in this model



Terminal box mounted type

- Equipped with a terminal box for easy wiring
- Terminal box enables easy wiring
- Use in environments that has low probability of damage to the lens due to external forces
- SH1T()/ SH2T() is available in this model



Protection cage mounted type

- Equipped with a Protection cage
- Terminals located inside the housing
- Damage to the lens from external forces can be prevented with protection cage
- SH1()P/SH2()P is available in this model

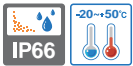


Terminal box and protection cage mounted type

- Equipped with a protection cage and a terminal box
- Terminal box enables easy wiring
- Damage to the lens from external forces can be prevented with protection cage
- SH1T()P/ SH2T()P is available in this model

SH1LR/SH2LR series

Heavy-Duty LED Revolving Warning Lights for Vessels and Heavy Industry Applications



- SH1LR-Ø125mm
- SH2LR-Ø150mm



SH1LR



SH2LRP



Common Specifications(SH1L/ SH2L)

- Features high visibility in all directions with special concentrated LED light structure and multi side reflector
- Revolving speed : 120-140RPM
- Materials : Lens-PC, Housing-Al, Protection cage-SUS316L, Reflector for LED : PC
- Ambient operation temperature : -20°C to +50°C
- Cable entry : 1/2"PF
- Housing standard color : MUNSELL No.7.5BG 7/2
- Protection rating : IP66



SH1LR LED Revolving Warning Light

- Certificates : KIMM, ABS, CCS

Model number	Voltage	Current	Certificates	Color
• SH1LR Standard type	DC12V	0.422A		<ul style="list-style-type: none"> • R-Red • A-Amber • G-Green • B-Blue
• SH1LRP Protection cage type	DC24V	0.266A		
• SH1TLR Terminal box type	AC110V	0.082A		
• SH1TLRP Protection cage and terminal box type	AC220V	0.041A		



SH2LR LED Revolving Warning Light

- Certificates : KIMM, ABS

Model number	Voltage	Current	Certificates	Color
• SH2LR Standard type	DC12V	0.422A		<ul style="list-style-type: none"> • R-Red • A-Amber • G-Green • B-Blue
• SH2LRP Protection cage type	DC24V	0.266A		
• SH2TLR Terminal box type	AC110V	0.082A		
• SH2TLRP Protection cage and terminal box type	AC220V	0.041A		

SH1LR/SH2LR LED Reflector Warning Lights Specification Category and Products Weight Chart

Type	SH1 series		SH2 series	
Lens diameter	Ø125mm		Ø150mm	
Standard		SH1LR (1.64kg)		SH2LR (1.69kg)
Built-in protection cage		SH1LRP (1.89kg)		SH2LRP (1.98kg)
Built-in terminal box		SH1TLR (2.10kg)		SH2TLR (2.15kg)
Built-in protection cage & Terminal box		SH1TLRP (2.35kg)		SH2TLRP (2.44kg)

※ Product weight is based on AC type.



Ordering Specification

SH1LR	-	12	-	R
[Model number]		[Voltage]		[Color]
<ul style="list-style-type: none"> • SH1LR • SH1LRP • SH1TLR • SH1TLRP • SH2LR • SH2LRP • SH2TLR • SH2TLRP 		<ul style="list-style-type: none"> • 12-DC12V • 24-DC24V • 110-AC110V • 220-AC220V 		<ul style="list-style-type: none"> • R-Red • A-Amber • G-Green • B-Blue

SH1LR/SH2LR models are equipped with flexible connector, and SH1TLR/SH2TLR models are equipped with 15C nipple at cable entry.



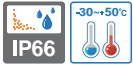
Flexible connector



15C nipple

SH1L/SH2L series

Heavy-Duty Steady/ Flash Signal Lights
for Vessels and Heavy Industry Applications



- SH1L-Ø125mm
- SH2L-Ø150mm



SH1LP



SH2TLP

SH1L/SH2L models are equipped with flexible connector, and SH1TL/SH2TL models are equipped with 15C nipple at cable entry.



Flexible connector



15C nipple



Common Specifications(SH1L/ SH2L)

- Uniform and clear light diffusion with multi layered LED light distribution reflector
- Built-in switch for selection between steady and flashing mode
- Flashing rate : 60-80 flashes/min
- Standard housing color : MUNSSELL No. 7.5BG 7/2
- Materials : Lens-PC, Housing-Al, Protection cage-SUS316L, Reflector- Heat resistant ABS
- Ambient operation temperature : -30°C to +50°C
- Cable entry : 1/2"PF
- Protection rating : IP66



SH1L LED Steady/Flashing Signal Light

- Certificates : KIMM, ABS, CCS

Model number	Voltage	Current	Certificates	Color
<ul style="list-style-type: none"> • SH1L Standard type • SH1LP Protection cage type • SH1TL Terminal box type • SH1TLP Protection cage and terminal box type 	DC12V	0.300A		<ul style="list-style-type: none"> • R-Red • A-Amber • G-Green • B-Blue
	DC24V	0.200A		
	AC110V	0.060A		
	AC220V	0.030A		



SH2L LED Steady/Flashing Signal Light

- Certificates : KIMM, ABS

Model number	Voltage	Current	Certificates	Color
<ul style="list-style-type: none"> • SH2L Standard type • SH2LP Protection cage type • SH2TL Terminal box type • SH2TLP Protection cage and terminal box type 	DC12V	0.300A		<ul style="list-style-type: none"> • R-Red • A-Amber • G-Green • B-Blue
	DC24V	0.200A		
	AC110V	0.060A		
	AC220V	0.030A		

SH1L/SH2L LED Steady/Flashing Signal Lights Specification Category and Products Weight Chart

Type	SH1 series		SH2 series	
Lens diameter	Ø125mm		Ø150mm	
Standard		SH1L (1.49kg)		SH2L (1.57kg)
Built-in protection cage		SH1LP (1.74kg)		SH2LP (1.86kg)
Built-in terminal box		SH1TL (1.95kg)		SH2TL (2.03kg)
Built-in protection cage & Terminal box		SH1TLP (2.20kg)		SH2TLP (2.32kg)

※ Product weight is based on AC type.

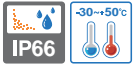


Ordering Specification

SH2L	-	220	-	R
[Model number]		[Voltage]		[Color]
<ul style="list-style-type: none"> • SH1L • SH1LP • SH1TL • SH1TLP • SH2L • SH2LP • SH2TL • SH2TLP 		<ul style="list-style-type: none"> • 12-DC12V • 24-DC24V • 110-AC110V • 220-AC220V 		<ul style="list-style-type: none"> • R-Red • A-Amber • G-Green • B-Blue

SH1S/SH2S series

Heavy-Duty Xenon Lamp Strobe Signal Lights for Vessels and Heavy Industry Applications



- SH1S-Ø125mm
- SH2S-Ø150mm



SH1S



Common Specifications(SH1S/ SH2S)

- Convenient lamp change with connector type connection structure
- Flashing rate : 60-80 flashes/min
- Standard housing color : MUNSSELL No. 7.5BG 7/2
- Materials : Lens-PC, Housing-Al, Protection cage-SUS316L
- Ambient operation temperature : -30°C to +50°C
- Cable entry : 1/2"PF
- Protection rating : IP66



SH1S Xenon Lamp Strobe Signal Light

- Certificates : KIMM, ABS, CCS

Model number	Voltage	Current	Bulb			Certificates	Color
			Spec	Standard	Parts no		
• SH1S Standard type	DC12V	1.001A	200V -550V	EUB0641 -1A(G) U type	48		<ul style="list-style-type: none"> • R-Red • A-Amber • G-Green • B-Blue
• SH1SP Protection cage type	DC24V	0.616A					
• SH1TS Terminal box type	AC110V	0.133A					
• SH1TSP Protection cage and terminal box type	AC220V	0.106A					



SH2S Xenon Lamp Strobe Signal Light

- Certificates : KIMM, ABS

Model number	Voltage	Current	Bulb			Certificates	Color
			Spec	Standard	Parts no		
• SH2S Standard type	DC12V	1.001A	200V -550V	EUB0641 -1A(G) U type	48		<ul style="list-style-type: none"> • R-Red • A-Amber • G-Green • B-Blue
• SH2SP Protection cage type	DC24V	0.616A					
• SH2TS Terminal box type	AC110V	0.133A					
• SH2TSP Protection cage and terminal box type	AC220V	0.106A					



SH2TS

SH1S/SH2S Xenon Strobe Signal Lights Specification Category and Products Weight Chart

Type	SH1S series		SH2S series	
Lens diameter	Ø125mm		Ø150mm	
Standard		SH1S (1.11 kg)		SH2S (1.19 kg)
Built-in protection cage		SH1SP (1.36 kg)		SH2SP (1.48 kg)
Built-in terminal box		SH1TS (1.57 kg)		SH2TS (1.65 kg)
Built-in protection cage & Terminal box		SH1TSP (1.82 kg)		SH2TSP (1.94 kg)

※ Product weight is based on AC type.

SH1S/SH2S models are equipped with flexible connector, and SH1TS/SH2TS models are equipped with 15C nipple at cable entry.



Flexible connector



15C nipple



Ordering Specification

SH1S	-	12	-	R
[Model number]		[Voltage]		[Color]
<ul style="list-style-type: none"> • SH1S • SH1SP • SH1TS • SH1TSP • SH2S • SH2SP • SH2TS • SH2TSP 		<ul style="list-style-type: none"> • 12-DC12V • 24-DC24V • 110-AC110V • 220-AC220V 		<ul style="list-style-type: none"> • R-Red • A-Amber • G-Green • B-Blue

SH1/SH2 series

Heavy-Duty Bulb Revolving Signal Light
for Vessels and Heavy Industry Applications



- SH1-Ø125mm
- SH2-Ø150mm



SH1



SH2T

SH1/SH2 models are equipped with flexible connector, and SH1T/SH2T models are equipped with 15C nipple at cable entry.



Flexible connector



15C nipple

Common Specifications(SH1/ SH2)

- Excellent light diffusion effect with multi faced reflector
- Adopts a special power transmission system that reduces noise and wear
- Revolving speed : 120-140RPM
- Standard housing color : MUNSELL No. 7.5BG 7/2
- Materials : Lens-PC, Housing-AI, Protection cage-SUS316L, Reflector-PC
- Ambient operation temperature : -20°C to +50°C
- Cable entry : 1/2"PF
- Protection rating : IP66

SH1 Bulb Revolving Warning Light

- Certificates : KIMM, ABS, CCS, CE

Model number	Voltage	Current	Bulb			Certificates	Color
			Spec	Standard	Parts no		
• SH1 Standard type	DC12V	1.544A	12V15W	G23 15S	17	 DC24V Only	<ul style="list-style-type: none"> • R-Red • A-Amber • G-Green • B-Blue
• SH1P Protection cage type	DC24V	0.766A	24V15W	G23 15S	18		
• SH1T Terminal box type	AC110V	0.204A	12V15W	G23 15S	17		
• SH1TP Protection cage and terminal box type	AC220V	0.102A	12V15W	G23 15S	17		

SH2 Bulb Revolving Warning Light

- Certificates : KIMM, ABS, CE

Model number	Voltage	Current	Bulb			Certificates	Color
			Spec	Standard	Parts no		
• SH2 Standard type	DC12V	1.544A	12V15W	G23 15S	17	 DC24V Only	<ul style="list-style-type: none"> • R-Red • A-Amber • G-Green • B-Blue
• SH2P Protection cage type	DC24V	0.766A	24V15W	G23 15S	18		
• SH2T Terminal box type	AC110V	0.204A	12V15W	G23 15S	17		
• SH2TP Protection cage and terminal box type	AC220V	0.102A	12V15W	G23 15S	17		

SH1/SH2 Bulb Revolving Warning Lights Specification Category and Products Weight Chart

Type	SH1 series		SH2 series	
	Ø125mm		Ø150mm	
Standard		SH1 (1.61kg)		SH2 (1.77kg)
Built-in protection cage		SH1P (1.86kg)		SH2P (2.06kg)
Built-in terminal box		SH1T (2.07kg)		SH2T (2.23kg)
Built-in protection cage & Terminal box		SH1TP (2.32kg)		SH2TP (2.52kg)

* Product weight is based on AC type.

Ordering Specification

SH1T	-	220	-	R
[Model number]		[Voltage]		[Color]
<ul style="list-style-type: none"> • SH1 • SH1P • SH1T • SH1TP • SH2 • SH2P • SH2T • SH2TP 		<ul style="list-style-type: none"> • 12-DC12V • 24-DC24V • 110-AC110V • 220-AC220V 		<ul style="list-style-type: none"> • R-Red • A-Amber • G-Green • B-Blue

SH1/ SH2 series

Heavy-Duty Signal Lights/ Warning Lights
for Vessels and Heavy Industry Applications

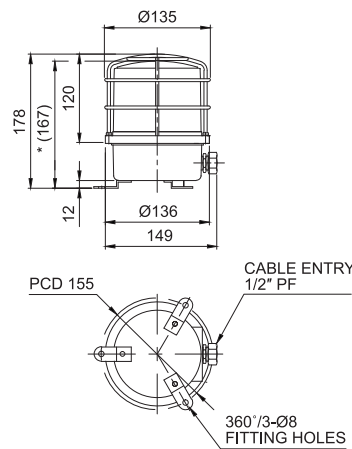


Technical Diagram

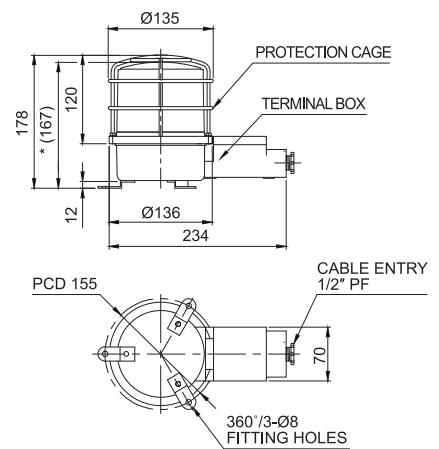
(Units : mm)



SH1LRP/ SH1LP/ SH1SP/ SH1P



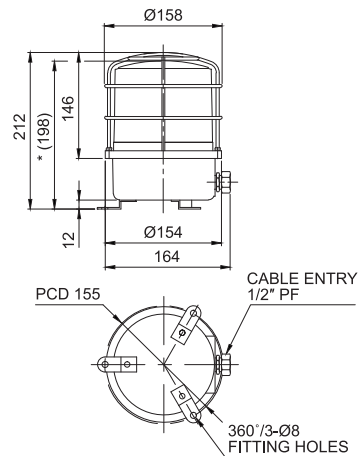
SH1TLRP/ SH1TLP/ SH1TSP/ SH1TP



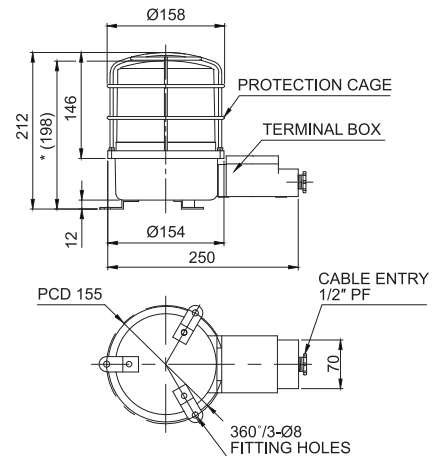
※ *(167) represents SH1LR/ SH1L/ SH1S/ SH1, SH1TLR/ SH1TL/ SH1TS/ SH1T size without protection cage.



SH2LRP/ SH2LP/ SH2SP/ SH2P



SH2TLRP/ SH2TLP/ SH2TSP/ SH2TP



※ *(198) represents SH2LR/ SH2L/ SH2S/ SH2, SH2TLR/ SH2TL/ SH2TS/ SH2T size without protection cage.



Customization

- 3/4"PF cable entry
Standard cable entry is 1/2"PF
3/4"PF is customization
- Built-in cable gland type
Flexible connector is equipped to the standard cable entry
- Brass housing product
SH2 series brass housing provides products with excellent corrosion resistance as customization
※ Color will be MUNSELL No. 7.5BG 7/2 when Released.
- 2T type has 2 cable entries in the terminal box
2 cable entries terminal box is a customized add-on,
please refer to the technical diagram on page 21



Built-in cable gland type



Brass housing product



2 cable entries terminal box model

SH1/ SH2 series

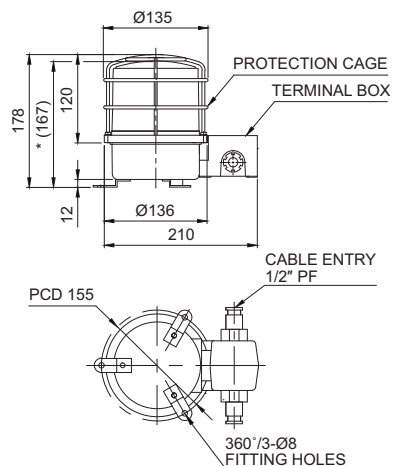
Heavy-Duty Signal Lights/ Warning Lights
for Vessels and Heavy Industry Applications



Technical Diagram for 2T Type Cable Entries

(Units : mm)

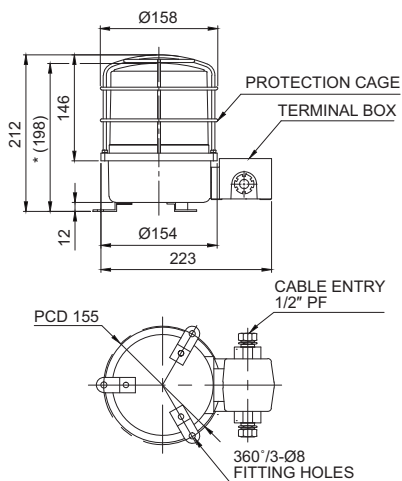
SH1LR-2TP/ SH1L-2TP/ SH1S-2TP/ SH1-2TP



※ *(167) represents SH1LR-2T/ SH1L-2T/ SH1S-2T/ SH1-2T size without protection cage.



SH2LR-2TP/ SH2L-2TP/ SH2S-2TP/ SH2-2TP



※ *(198) represents SH2LR-2T/ SH2L-2T/ SH2S-2T/ SH2-2T size without protection cage.

Warning light and electric horn combinations with excellent durability and perfectly enclosed structure, designed for vessels and heavy industry applications



■ A variety of selectable light source and function combinations

You can select from a variety of light sources for your the work environment, conditions, and purpose. Basic specifications are as follows :

- LED revolving type
- LED steady/flashing type
- Xenon lamp strobe type
- Bulb revolving type

User-selected LED strobe type and LED simulated revolving type are available upon request.

1 A variety of selectable warning sounds and sound messages

You can convey specific information with a variety of 20 warning sounds and voice messages.

Sound	Pattern	Ch	Sound Tone
WS	5 Warning sounds	Ch1	Fire.A-ANG
		Ch2	Emergency WA-U(Yelp)
		Ch3	Ambulance PI-PO(Hi-low)
		Ch4	Machinery Fault
		Ch5	High Expansion
WP	5 Special warning sounds	Ch1	Fire.A-ANG
		Ch2	Abandon Alarm
		Ch3	Machinery Fault
		Ch4	High Expansion
		Ch5	7 Short Pl. / 1 Long
WM	5 Melodies	Ch1	Sweet Home
		Ch2	For Elise
		Ch3	Cuckoo's Waltz
		Ch4	Piano Sonata
		Ch5	Turkish March
WA	5 Alarms	Ch1	Beep Intermittent
		Ch2	Door Chime
		Ch3	Phone Ring
		Ch4	PI.PI.PI Short
		Ch5	Tripping Beat
WV	5 Customizable sound messages	Ch1 - Ch5	Customized sound tones

- SHD series - Single electric horn type
- SHD2 series - Dual-facing electric horn type



Common Specifications

- Warning light and electric horn combination models for vessels and heavy industries applications
- Aluminum housing and polycarbonate lens material provides excellent durability under seismic conditions
- Excellent hermetic structure that blocks water and dust
- Superior impact and shock resistance
- You can select a variety of sound and light sources(bulb, LED and xenon)
- Equipped with a wire guard
- Terminal box located inside the housing
- Can adjust sound volume and select sound pattern with the switches built inside the products
- Cable entry : 1/2"PF
- Materials : Lens-PC, Housing-Al, Protection cage-SUS316L, Reflector-PC, Multi-tiered reflector-Heat resistance ABS
- Standard housing color : MUNSELL No. 7.5BG 7/2
- Protection rating : IP66
- Certificates : KIMM, ABS, CE Compliant

2 Lens

- Polycarbonate lens material provides excellent impact resistance

3 Protection cage

- The durable wire guard is made of corrosion resistant stainless steel that prevents damage to the lens from external contact
- Materials : SUS316L

4 Housing

- The special aluminum body housing features superior durability
- The housing is corrosion resistant from a special anodized surface treatment process
- Materials : Al

5 Fully enclosed structure

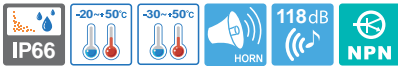
- The tightly sealed warning light structure is waterproof and dustproof
- Protection rating : IP66

SHD series Product Category Chart

SHD series		Light Source and Function	SHD2 series	
Standard Type	Protection Cage Equipped Type		Standard Type	Protection Cage Equipped Type
SHDLR	SHDLRP	LED revolving type	SHD2LR	SHD2LRP
SHDL	SHDLP		SHD2L	SHD2LP
SHDS	SHDSP	Xenon lamp strobe type	SHD2S	SHD2SP
SHD	SHDP		SHD2	SHD2P
		Bulb revolving type		

SHD/ SHD2 series

Heavy-Duty Warning/ Signal Lights and Electric Horn for Vessels and Heavy Industry Applications



- SHD series
-Single Electric Horn
- SHD2 series
-Dual Electric Horn



SHDLR



SHD2LR



SHDLP

SHD2LP



SHD2L used in KTX tunnels for an evacuation alarm warning light system.

SHDLR/ SHDLRP LED Revolving Warning Light & Electric Horn Combination

- Features high visibility in all directions with special concentrated LED light structure and multi side reflector
- Revolving speed : 120-140RPM
- Ambient operation temperature : -20°C to +50°C

Model number	Voltage	Current	Sound pattern and volume	Certificates	Weight	Color
SHDLR SHDLRP	DC12V	2.633A	• WS -5 Warning sounds : 118dB		<ul style="list-style-type: none"> • SHDLR DC-3.21kg • SHDLRP DC-3.46kg 	<ul style="list-style-type: none"> • R-Red • A-Amber • G-Green • B-Blue
	DC24V	1.288A	• WP -5 Special warning sounds : 118dB			
	AC110V	0.308A	• WM -5 Melodies : 118dB			
	AC220V	0.154A	• WA -5 Alarms : 116dB • WV -5 Customizable voices : 113dB			

SHD2LR/ SHD2LRP LED Revolving Warning Light & Dual Electric Horn Combination

Model number	Voltage	Current	Sound pattern and volume	Certificates	Weight	Color
SHD2LR SHD2LRP	DC12V	4.844A	• WS -5 Warning sounds : 118dB×2		<ul style="list-style-type: none"> • SHD2LR DC-4.26kg • SHD2LRP DC-4.51kg 	<ul style="list-style-type: none"> • R-Red • A-Amber • G-Green • B-Blue
	DC24V	2.255A	• WP -5 Special warning sounds : 118dB×2			
	AC110V	0.535A	• WM -5 Melodies : 118dB×2			
	AC220V	0.267A	• WA -5 Alarms : 116dB×2 • WV -5 Customizable voices : 113dB×2			

SHDL/ SHDLP LED Steady/Flashing Warning Light & Electric Horn Combination

- Uniform and clear light diffusion with multi layered LED light distribution reflector
- Flashing rate : 60-80 flashes/min(Built-in steady/flashing selection switch)
- Ambient operation temperature : -30°C to +50°C

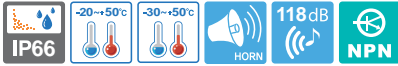
Model number	Voltage	Current	Sound pattern and volume	Certificates	Weight	Color
SHDL SHDLP	DC12V	2.511A	• WS -5 Warning sounds : 118dB		<ul style="list-style-type: none"> • SHDL DC-3.02kg • SHDLP DC-3.27kg 	<ul style="list-style-type: none"> • R-Red • A-Amber • G-Green • B-Blue
	DC24V	1.222A	• WP -5 Special warning sounds : 118dB			
	AC110V	0.286A	• WM -5 Melodies : 118dB			
	AC220V	0.143A	• WA -5 Alarms : 116dB • WV -5 Customizable voices : 113dB			

SHD2L/ SHD2LP LED Steady/Flashing Warning Light & Dual Electric Horn Combination

Model number	Voltage	Current	Sound pattern and volume	Certificates	Weight	Color
SHD2L SHD2LP	DC12V	4.722A	• WS -5 Warning sounds : 118dB×2		<ul style="list-style-type: none"> • SHD2L DC-4.07kg • SHD2LP DC-4.32kg 	<ul style="list-style-type: none"> • R-Red • A-Amber • G-Green • B-Blue
	DC24V	2.188A	• WP -5 Special warning sounds : 118dB×2			
	AC110V	0.513A	• WM -5 Melodies : 118dB×2			
	AC220V	0.256A	• WA -5 Alarms : 116dB×2 • WV -5 Customizable voices : 113dB×2			

SHD/ SHD2 series

Warning Lights and Electric Horns for Vessels and Heavy Industry Applications



- **SHD series**
-Single Electric Horn
- **SHD2 series**
-Dual Electric Horn



SHDS



SHD2S



SHD

SHD2P

SHD/SHD2 series are equipped with flexible connector at cable entry. Cable gland is an optional item.



Flexible connector



Cable gland



SHDS/ SHDSP Xenon Lamp Strobe Warning Light and Electric Horn Combination

- Flashing rate : 60-80 flashes/min
- Ambient operating temperature : -30°C to +50°C

Model number	Voltage	Current	Bulb			Sound pattern and volume	Certificates	Weight	Color
			Spec	Standard	Parts no				
SHDS SHDSP	DC12V	2.933A	200V -550V	EUB0641 -1A(G) U Type	48	<ul style="list-style-type: none"> • WS-5 Warning sounds :118dB • WP -5 Special warning sounds :118dB • WM-5 Melodies : 118dB • WA-5 Alarms : 116dB • WV -5 Customizable voices : 113dB 		<ul style="list-style-type: none"> • SHDS DC-3.05kg • AC-3.38kg • SHDSP DC-3.3kg • AC-3.6kg 	<ul style="list-style-type: none"> • R-Red • A-Amber • G-Green • B-Blue
	DC24V	1.411A							
	AC110V	0.360A							
	AC220V	0.220A							



SHD2S/ SHD2SP Xenon Lamp Strobe Warning Light and Dual Electric Horn Combination

Model number	Voltage	Current	Bulb			Sound pattern and volume	Certificates	Weight	Color
			Spec	Standard	Parts no				
SHD2S SHD2SP	DC12V	5.144A	200V -550V	EUB0641 -1A(G) U Type	48	<ul style="list-style-type: none"> • WS-5 Warning sounds :118dB×2 • WP -5 Special warning sounds :118dB×2 • WM-5 Melodies : 118dB×2 • WA-5 Alarms : 116dB×2 • WV -5 Customizable voices : 113dB×2 		<ul style="list-style-type: none"> • SHD2S DC-4.11kg • AC-4.44kg • SHD2SP DC-4.36kg • AC-4.69kg 	<ul style="list-style-type: none"> • R-Red • A-Amber • G-Green • B-Blue
	DC24V	2.377A							
	AC110V	0.586A							
	AC220V	0.333A							



SHD/ SHDP Bulb Revolving Warning light and Electric Horn Combination

- Revolving speed : 120 - 140RPM
- Ambient operating temperature : -20°C to +50°C

Model number	Voltage	Current	Bulb			Sound pattern and volume	Certificates	Weight	Color
			Spec	Standard	Parts no				
SHD SHDP	DC12V	3.755A	12V15W	G23 15S	17	<ul style="list-style-type: none"> • WS-5 Warning sounds :118dB • WP -5 Special warning sounds :118dB • WM-5 Melodies : 118dB • WA-5 Alarms : 116dB • WV -5 Customizable voices : 113dB 		<ul style="list-style-type: none"> • SHD DC-3.18kg • AC-3.89kg • SHDP DC-3.43kg • AC-4.14kg 	<ul style="list-style-type: none"> • R-Red • A-Amber • G-Green • B-Blue
	DC24V	1.788A	24V15W	G23 15S	18				
	AC110V	0.422A	12V15W	G23 15S	17				
	AC220V	0.211A	12V15W	G23 15S	17				



SHD2/ SHD2P Bulb Revolving Warning light and Dual Electric Horn Combination

Model number	Voltage	Current	Bulb			Sound pattern and volume	Certificates	Weight	Color
			Spec	Standard	Parts no				
SHD2 SHD2P	DC12V	5.966A	12V15W	G23 15S	17	<ul style="list-style-type: none"> • WS-5 Warning sounds :118dB×2 • WP -5 Special warning sounds :118dB×2 • WM-5 Melodies : 118dB×2 • WA-5 Alarms : 116dB×2 • WV -5 Customizable voices : 113dB×2 		<ul style="list-style-type: none"> • SHD2 DC-4.23kg • AC-4.95kg • SHD2P DC-4.48kg • AC-5.20kg 	<ul style="list-style-type: none"> • R-Red • A-Amber • G-Green • B-Blue
	DC24V	2.755A	24V15W	G23 15S	18				
	AC110V	0.648A	12V15W	G23 15S	17				
	AC220V	0.324A	12V15W	G23 15S	17				

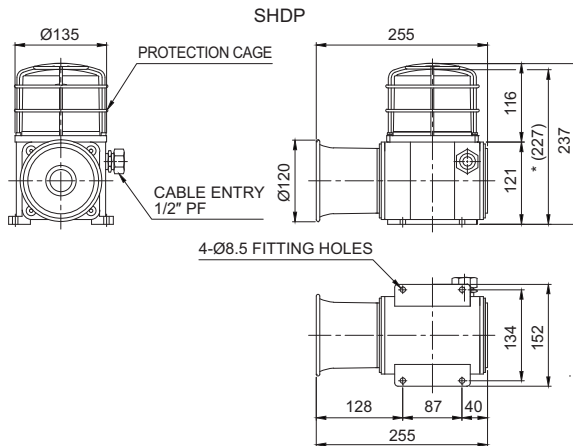
SHD/SHD2 series

Warning Lights and Electric Horns for Vessels and Heavy Industry Applications

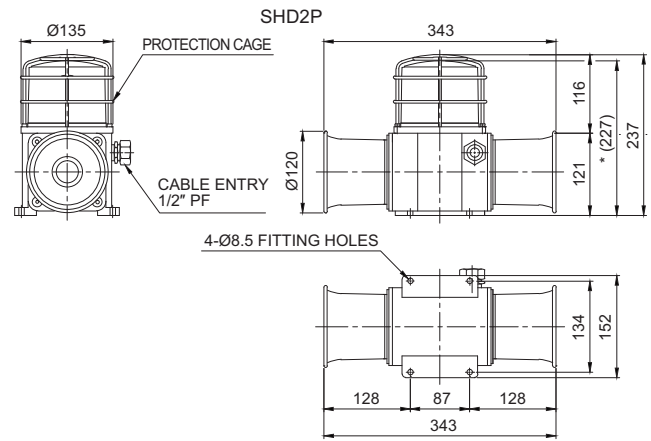


Technical Diagram

(Units : mm)



※ *(227) represents SHD size without protection cage.



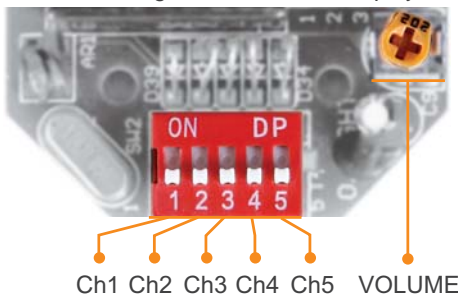
※ *(227) represents SHD2 size without protection cage.



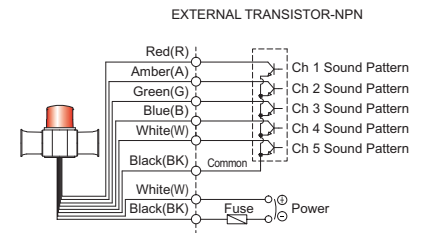
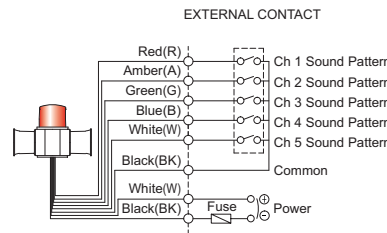
Sound Selection Instructions and Wiring

• Standard Type : Select sound using the switch inside of the unit. When you turn on the dip switch for each channel, the designated sound will be played.

• Customization : External contact(LC)



SHD SERIES-DC/AC
SHD2 SERIES-DC/AC



Customization

- Customized cable entry(3/4"PF) available(Standard : 1/2"PF)
- Cable gland type
- Customized external sound line type available : SHD/SHD2 series have built-in switch for sound tone selection

■ Sound tones for standard model

Sound	Built-in sound	Ch	Sound tone	Sound	Built-in sound	Ch	Sound tone
WS	5 Warning sounds	Ch1	Fire.A-ANG	WM	5 Melodies	Ch1	Sweet Home
		Ch2	Emergency WA-U(Yelp)			Ch2	For Elise
		Ch3	Ambulance PI-PO(Hi-low)			Ch3	Cuckoo's Waltz
		Ch4	Machinery Fault			Ch4	Piano Sonata
		Ch5	High Expansion			Ch5	Turkish March
WP	5 Special warning sounds	Ch1	Fire.A-ANG	WA	5 Alarms	Ch1	Beep Intermittent
		Ch2	Abandon Alarm			Ch2	Door Chime
		Ch3	Machinery Fault			Ch3	Phone Ring
		Ch4	High Expansion			Ch4	PI.PI.PI Short
		Ch5	7 Short PI. / 1 Long			Ch5	Tripping Beat
WV	5 Customizable Voices	Ch1-Ch5	Customized sound				

※ Standard model has 5 warning sounds(WS), 5 special warning sounds(WP), 5 melodies(WM), 5 alarms(WA) and 5 customizable voices(WV).



Ordering Specification

SHD2L	-	WA	-	24	-	R
[Model number]		[Sound]		[Voltage]		[Color]
<ul style="list-style-type: none"> • SHDLR • SHDLRP • SHD2LR • SHD2LRP • SHDL • SHDLP • SHD2L • SHD2LP • SHDS • SHDSP • SHD2S • SHD2SP • SHD • SHDP • SHD2 • SHD2P 		<ul style="list-style-type: none"> • WS-Warning sounds • WP-Special warning sounds • WM-Melodies • WA-Alarms • WV-Customizable voices 		<ul style="list-style-type: none"> • 12-DC12V • 24-DC24V • 110-AC110V • 220-AC220V 		<ul style="list-style-type: none"> • R-Red • A-Amber • G-Green • B-Blue

SCD series

Warning Light and Electric Horn Combinations for Vessels and Heavy Industry Applications

Light weight warning light and electric horn combinations with polycarbonate housing for vessels and heavy industry applications

- **SCDF series**
 - Self stand type
- **SCDW series**
 - Wall mount type

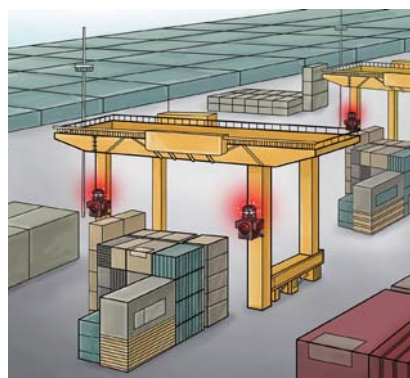


Common Specifications(SCDF/SCDW)

- Warning light and electric horn combinations for vessels and heavy industrial applications
- Light weight model with special polycarbonate (PC+GF) housing
- Excellent hermetic structure that blocks water and dust
- Superior impact and shock resistance
- Prevents damage from external contact with recessed horn structure, high volume output possible with the extended length of the horn housing
- Easy wiring and sound control with the terminal box attached on the side of housing
- Standard model comes with a protection cage equipped
- Can select a variety of light sources and sound pattern combinations
- Detachable mounting bracket structure enables product to be either self stand type or wall mount type
- Can adjust sound volume and select sound pattern with the switches built inside the units
- Materials : Lens-PC, Housing-PC+GF, Protection cage-SUS316L, Reflector-PC, Multi-tiered reflector-Heat resistance ABS
- Cable entry : 1/2"PF
- Ambient operating temperature
 - 20°C to +50°C : SCDFLR, SCDWLR, SCDF, SCDW
 - 30°C to +50°C : SCDFL, SCDWL, SCDFS, SCDWS
- Protection rating : IP66
- Certificates : KIMM, KR, CE Compliant
- Mountings : Available in self stand type and wall mount type

SCD series Product Category Chart

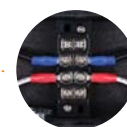
	LED revolving type	LED steady/ flashing type	xenon lamp strobe type	Bulb revolving type
Self stand type	SCDFLR 	SCDFL 	SCDFS 	SCDF
Wall mount type	SCDWLR 	SCDWL 	SCDWS 	SCDW



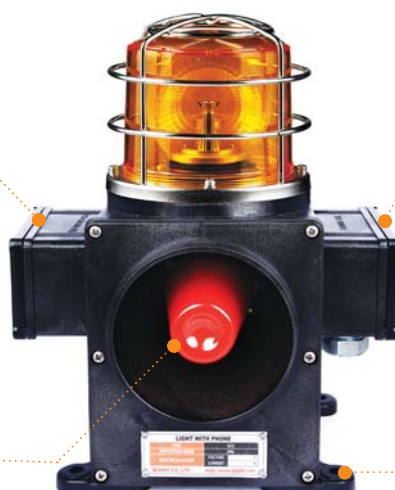
Easy control of the audible sound since the sound control board is located separately from the main board



Easy wire configuration possible with terminal box located on the side of the housing



Recessed horn structure protects it from damage by external forces



Detachable mounting bracket structure enables product to be either self stand type or wall mount type

SCD series

Warning Light and Electric Horn Combinations for Vessels and Heavy Industry Applications



- **SCDF series**
- Self stand type
- **SCDW series**
- Wall mount type



SCDWLR



SCDFLR



SCDWL / SCDWS



SCDFL / SCDFS



SCDW



SCDF

SCDF/SCDW series are equipped with flexible connector at cable entry. Cable gland is an optional item.



Flexible connector



Cable gland

SCDFLR/ SCDWLR LED Revolving Warning Light and Electric Horn Combination

- Excellent omni-directional visibility with LED light collecting system and special multifaceted reflector
- Revolving speed : 120 - 140RPM
- Ambient operating temperature : -20°C to +50°C

Model number	Voltage	Current	Sound pattern and volume	Certificates	Weight	Color
SCDFLR SCDWLR	DC12V	2.633A	<ul style="list-style-type: none"> • WS-5 Warning sounds : 118dB • WP-5 Special warning sounds : 118dB • WM-5 Melodies : 118dB • WA-5 Alarms : 116dB • WV-5 Customizable voices : 113dB 		<ul style="list-style-type: none"> • SCDFLR DC-2.60kg • SCDWLR DC-2.70kg 	<ul style="list-style-type: none"> • R-Red • A-Amber • G-Green • B-Blue
	DC24V	1.288A				
	AC110V	0.308A				
	AC220V	0.154A				

SCDFL/ SCDWL LED Steady/Flashing Warning Light and Electric Horn Combination

- Multi layer LED reflect system emits clear and uniform level of signal lights throughout the lens
- Flashing rate : 60-80 flashes/min(Built-in steady/flashing selection switch)
- Ambient operating temperature : -30°C to +50°C

Model number	Voltage	Current	Sound pattern and volume	Certificates	Weight	Color
SCDFL SCDWL	DC12V	2.511A	<ul style="list-style-type: none"> • WS-5 Warning sounds : 118dB • WP-5 Special warning sounds : 118dB • WM-5 Melodies : 118dB • WA-5 Alarms : 116dB • WV-5 Customizable voices : 113dB 		<ul style="list-style-type: none"> • SCDFL DC-2.42kg • SCDWL DC-2.52kg 	<ul style="list-style-type: none"> • R-Red • A-Amber • G-Green • B-Blue
	DC24V	1.222A				
	AC110V	0.286A				
	AC220V	0.143A				

SCDFS/ SCDWS Xenon Lamp Strobe Warning Light and Electric Horn Combination

- Convenient lamp exchange by adopting connector type lamp installation
- Flashing rate : 60-80 flashes/min
- Ambient operating temperature : -30°C to +50°C

Model number	Voltage	Current	Bulb			Sound pattern and volume	Certificates	Weight	Color
			Spec	Standard	Parts no				
SCDFS SCDWS	DC12V	2.933A	200V -550V	EUB0641 -1A(G) U Type	48	<ul style="list-style-type: none"> • WS-5 Warning sounds :118dB • WP -5 Special warning sounds :118dB • WM-5 Melodies : 118dB • WA-5 Alarms : 116dB • WV -5 Customizable voices : 113dB 		<ul style="list-style-type: none"> • SCDF DC-2.46kg • SCDW DC-2.46kg 	<ul style="list-style-type: none"> • R-Red • A-Amber • G-Green • B-Blue
	DC24V	1.411A							
	AC110V	0.360A							
	AC220V	0.220A							

SCDF/ SCDW Bulb Revolving Warning Light and Electric Horn Combination

- Multi layer reflector system provides excellent signal light diffusing effect
- Revolving speed : 120 - 140RPM
- Ambient operating temperature : -20°C to +50°C

Model number	Voltage	Current	Bulb			Sound pattern and volume	Certificates	Weight	Color
			Spec	Standard	Parts no				
SCDF SCDW	DC12V	3.755A	12V15W	G23 15S	17	<ul style="list-style-type: none"> • WS-5 Warning sounds :118dB • WP -5 Special warning sounds :118dB • WM-5 Melodies : 118dB • WA-5 Alarms : 116dB • WV -5 Customizable voices : 113dB 	 	<ul style="list-style-type: none"> • SCDF DC-2.58kg • SCDW DC-2.68kg 	<ul style="list-style-type: none"> • R-Red • A-Amber • G-Green • B-Blue
	DC24V	1.788A	24V15W	G23 15S	18				
	AC110V	0.422A	12V15W	G23 15S	17				
	AC220V	0.211A	12V15W	G23 15S	17				

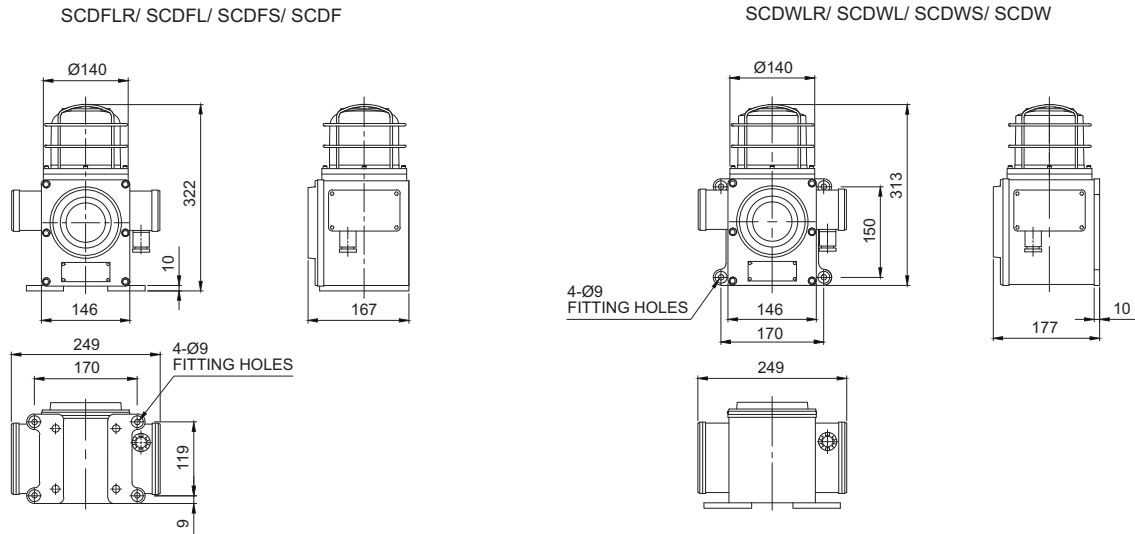
SCD series

Warning Light and Electric Horn Combinations for Vessels and Heavy Industry Applications



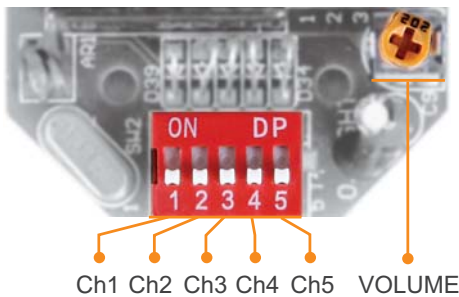
Technical Diagram

(Units : mm)

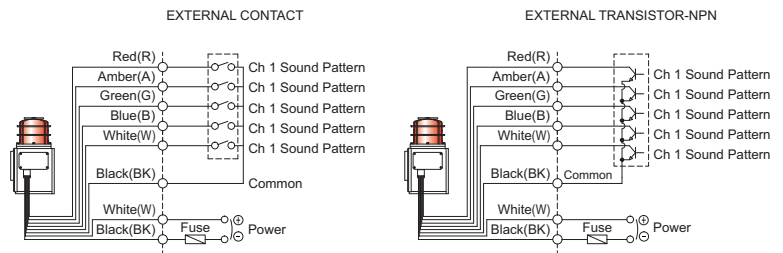


Sound Selection Instructions and Wiring

- Standard Type : Select sound using the switch inside of the unit. When you turn on the dip switch for each channel, the designated sound will be played.
- Customization : External contact(LC)



SCDW SERIES-DC/AC
SCDF SERIES-DC/AC



Customization

- Customized cable entry(3/4"PF) available(Standard : 1/2"PF)
- Customized external sound line type available : SCD series has built-in switch for sound tone selection
- Customized wiring available to select the sound tone via external contact or transistor wiring type(Model number : -LC)
- Cable gland type



Ordering Specification

SCDW	WA	24	R
[Model number]	[Sound]	[Voltage]	[Color]
<ul style="list-style-type: none"> • SCDFLR • SCDFL • SCDFS • SCDF • SCDWLR • SCDWL • SCDWS • SCDW 	<ul style="list-style-type: none"> • WS-Warning sounds • WP-Special warning sounds • WM-Melodies • WA-Alarms • WV-Customizable voices 	<ul style="list-style-type: none"> • 12-DC12V • 24-DC24V • 110-AC110V • 220-AC220V 	<ul style="list-style-type: none"> • R-Red • A-Amber • G-Green • B-Blue

SED/SD/SMD series

Warning Light and Electric Horn Combinations
for Vessels and Heavy Industry Applications

Wall mount warning light and electric horn combinations featuring superior durability, tight seal, and corrosion resistance, designed for vessels and heavy industrial applications

- **SED series**
 - 125mm warning light & electric horn with Max 118dB sound output
- **SD series**
 - 150mm warning light & electric horn with Max 118dB sound output
- **SMD series**
 - 150mm warning light & electric horn with Max 120dB sound output



1 Lens

Utilizes a strong and durable polycarbonate material with excellent shock and vibration resistance.

The lens surface has two types according to the light source type and function-light diffusion type and light transmission type.

Light transmission type		LED revolving type(SEDLR) Bulb revolving type(SED)
Light diffusion type		LED steady/flashing type(SED/LF) Xenon lamp strobe type(SED/S)

2 Protection cage

- The durable protection cage is made of corrosion resistant stainless steel that prevents damage to the lens from external contact
- Materials : SUS316L



Common Specifications

- Wall mount warning light and electric horn combinations for vessels and heavy industrial applications
- Aluminum housing and polycarbonate lens material provides excellent impact and shock resistance
- Excellent hermetic structure that block water and dust
- Can select a variety of light source(bulb, LED, xenon lamp) and sound pattern combination
- Attached terminal box enables easy wiring
- Can adjust sound volume and select sound pattern with the switches built inside the products
- Cable entry : 1/2"PF
- Materials : Lens-PC, Housing-Al, Protection cage-SUS316L, Reflector-PC, Multi-tiered reflector-Heat resistance ABS
- Standard housing color : MUNSELL No. 7.5GBG 7/2
- Protection rating : IP66

■ A variety of selectable light source and function combinations

You can select from a variety of light sources for your work environment, condition, and purpose. Basic specifications are as follows :

- LED Revolving Type
- Xenon Lamp Strobe Type
- LED Steady/Flashing Type
- Bulb Revolving Type

User-selected LED strobe type and LED stimulated revolving type are available upon request.

3 A variety of selectable warning sounds and sound messages

You can convey specific information with a variety of 20 warning sounds and voice messages.

Sound	Pattern	Ch	Sound Tone
WS	5 Warning sounds	Ch1 Ch2 Ch3 Ch4 Ch5	Fire.A-ANG Emergency WA-U(Yelp) Ambulance PI-PO(Hi-low) Machinery Fault High Expansion
WP	5 Special warning sounds	Ch1 Ch2 Ch3 Ch4 Ch5	Fire.A-ANG Abandon Alarm Machinery Fault High Expansion 7 Short Pl. / 1 Long
WM	5 Melodies	Ch1 Ch2 Ch3 Ch4 Ch5	Sweet Home For Elise Cuckoo's Waltz Piano Sonata Turkish March
WA	5 Alarms	Ch1 Ch2 Ch3 Ch4 Ch5	Beep Intermittent Door Chime Phone Ring PI.PI.PI Short Tripping Beat
WV	5 Customizable sound messages	Ch1-Ch5	Customized sound tones

4 Housing

- The special aluminum housing features superior durability
- The housing is corrosion resistant from a special anodized surface treatment process
- Materials : Al

5 Fully enclosed structure

- The tightly sealed warning light structure is waterproof and dustproof
- Protection rating : IP66

6 Terminal Box

- Terminal box is located at the bottom of the product for easy wiring
- Materials : Al

SED/ SD/ SMD series Information



Standard type

- No protection cage is provided
- Recommended for the places where the lens is not damaged by external contact
- Model lists : SED/ SD/ SMD



Protection cage type

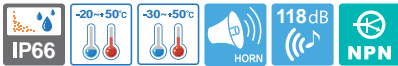
- Provided with protection cage
- Lens can be protected from the damage by external contact
- Model lists : SEDP/ SDP/ SMDP

SED/ SD/ SMD series References

	SED series		SD series		SMD series	
Diameter / dB	Ø125mm / Max 118dB at 1m		Ø150mm / Max 118dB at 1m		Ø150mm / Max 120dB at 1m	
Materials	Lens - PC, Housing - Al, Protection cage-SUS316L, Reflector - PC/ Heat resistant ABS					
Protection rating	IP66					
Certificates	KIMM/ CCS/ KR/ CE		KIMM/ ABS/ LR/ KR/ CE			
Cable entry	Standard : 1/2"PF (Customized cable entry available : 3/4"PF)					
Mounting	Wall mounting					
	Standard	With protection cage	Standard	With protection cage	Standard	With protection cage
LED revolving	SEDLR	SELRP	SDLR	SDLRP	SMDLR	SMDLRP
LED steady/flashing	SEDL	SELP	SDL	SDLP	SMDL	SMDLP
Xenon lamp strobe	SEDS	SEDSP	SDS	SDSP	SMDS	SMDSP
Bulb revolving	SED	SEDP	SD	SDP	SMD	SMDP

SED series

Warning Lights and Electric Horns for Vessels and Heavy Industry Applications



Ø125mm signal light and 118dB electric horn combination



SEDLR



SEDLP/ SEDSP



SED



Common Specifications(SEDLR/ SEDL/ SEDS/ SED)

- Materials : Lens-PC, Housing-AI, Protection cage-SUS316L, Reflector-PC/ Heat resistant ABS
- Cable entry : 1/2"PF
- Housing color : MUNSELL No. 7.5BG 7/2
- Protection rating : IP66



SEDLR/ SEDLRP LED Revolving Warning Light and Electric Horn Combination

- Revolving speed : 120-140RPM
- Ambient operating temperature : -20°C to + 50°C

Model number	Voltage	Current	Sound pattern and volume	Certificates	Weight	Color
SEDLR SEDLRP	DC12V	2.633A	<ul style="list-style-type: none"> • WS-5 Warning sounds : 118dB • WP-5 Special warning sounds : 118dB • WM-5 Melodies : 118dB • WA-5 Alarms : 116dB • WV-5 Customizable voices : 113dB 	-	<ul style="list-style-type: none"> • SEDLR DC-3.09kg • SEDLRP DC-3.34kg • AC-3.86kg • AC-4.11kg 	<ul style="list-style-type: none"> • R-Red • A-Amber • G-Green • B-Blue
	DC24V	1.288A				
	AC110V	0.308A				
	AC220V	0.154A				



SEDL/ SEDLP LED Steady/Flashing Warning Light and Electric Horn Combination

- Flashing rate : 60-80 flashes/min(Built-in steady/flashing selection switch)
- Ambient operating temperature : -30°C to +50°C

Model number	Voltage	Current	Sound pattern and volume	Certificates	Weight	Color
SEDL SEDLP	DC12V	2.511A	<ul style="list-style-type: none"> • WS-5 Warning sounds : 118dB • WP-5 Special warning sounds : 118dB • WM-5 Melodies : 118dB • WA-5 Alarms : 116dB • WV-5 Customizable voices : 113dB 	KR	<ul style="list-style-type: none"> • SEDL DC-2.96kg • SEDLP DC-3.21kg • AC-3.38kg • AC-3.63kg 	<ul style="list-style-type: none"> • R-Red • A-Amber • G-Green • B-Blue
	DC24V	1.222A				
	AC110V	0.286A				
	AC220V	0.143A				



SEDS/ SEDSP Xenon Lamp Strobe Warning Light and Electric Horn Combination

- Convenient lamp exchange by adopting a connector type lamp installation
- Flashing rate : 60-80 flashes/min
- Ambient operating temperature : -30°C to +50°C

Model number	Voltage	Current	Bulb			Sound pattern and volume	Certificates	Weight	Color
			Spec	Standard	Parts no				
SEDS SEDSP	DC12V	2.933A	200V -550V	EUB0641 -1A(G) U Type	48	<ul style="list-style-type: none"> • WS-5 Warning sounds : 118dB • WP -5 Special warning sounds : 118dB • WM-5 Melodies : 118dB • WA-5 Alarms : 116dB • WV -5 Customizable voices : 113dB 	-	<ul style="list-style-type: none"> • SEDS DC-3.01kg • SEDSP DC-3.26kg • AC-3.40kg • AC-3.65kg 	<ul style="list-style-type: none"> • R-Red • A-Amber • G-Green • B-Blue
	DC24V	1.411A							
	AC110V	0.360A							
	AC220V	0.220A							



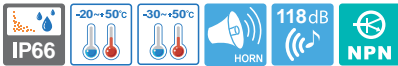
SED/ SEDP Bulb Revolving Warning Light and Electric Horn Combination

- Revolving speed : 120-140RPM
- Ambient operating temperature : -20°C to + 50°C

Model number	Voltage	Current	Bulb			Sound pattern and volume	Certificates	Weight	Color
			Spec	Standard	Parts no				
SED SEDP	DC12V	3.755A	12V15W	G23 15S	17	<ul style="list-style-type: none"> • WS-5 Warning sounds : 118dB • WP -5 Special warning sounds : 118dB • WM-5 Melodies : 118dB • WA-5 Alarms : 116dB • WV -5 Customizable voices : 113dB 	<ul style="list-style-type: none"> KIMM ABS KR CCS CE 	<ul style="list-style-type: none"> • SED DC-3.17kg • SEDP DC-3.42kg • AC-3.94kg • AC-4.19kg 	<ul style="list-style-type: none"> • R-Red • A-Amber • G-Green • B-Blue
	DC24V	1.788A	24V15W	G23 15S	18				
	AC110V	0.422A	12V15W	G23 15S	17				
	AC220V	0.211A	12V15W	G23 15S	17				

SD series

Warning Lights and Electric Horns for Vessels and Heavy Industry Applications



Ø150mm signal light and 118dB electric horn combination



SDLR



SDL/ SDS



SD



Common Specifications(SDLR/ SDL/ SDS/ SD)

- Materials : Lens-PC, Housing-AI, Protection cage-SUS316L, Reflector-PC/Heat resistant ABS
- Cable entry : 1/2"PF
- Housing color : MUNSELL No. 7.5BG 7/2
- Protection rating : IP66



SDLR/ SDLRP LED Revolving Warning Light and Electric Horn Combination

- Revolving speed : 120-140RPM
- Ambient operating temperature : -20°C to + 50°C

Model number	Voltage	Current	Sound pattern and volume	Certificates	Weight	Color
SDLR SDLRP	DC12V	2.633A	<ul style="list-style-type: none"> • WS-5 Warning sounds : 118dB • WP-5 Special warning sounds : 118dB • WM-5 Melodies : 118dB • WA-5 Alarms : 116dB • WV-5 Customizable voices : 113dB 		<ul style="list-style-type: none"> • SDLR DC-3.36kg • SDLRP DC-3.65kg 	<ul style="list-style-type: none"> • R-Red • A-Amber • G-Green • B-Blue
	DC24V	1.288A				
	AC110V	0.308A				
	AC220V	0.154A				



SDL/ SDLP LED Steady/Flashing Warning Light and Electric Horn Combination

- Flashing rate : 60-80 flashes/min(Built-in steady/flashing selection switch)
- Ambient operating temperature : -30°C to +50°C

Model number	Voltage	Current	Sound pattern and volume	Certificates	Weight	Color
SDL SDLP	DC12V	2.511A	<ul style="list-style-type: none"> • WS-5 Warning sounds : 118dB • WP-5 Special warning sounds : 118dB • WM-5 Melodies : 118dB • WA-5 Alarms : 116dB • WV-5 Customizable voices : 113dB 		<ul style="list-style-type: none"> • SDL DC-3.22kg • SDLP DC-3.51kg 	<ul style="list-style-type: none"> • R-Red • A-Amber • G-Green • B-Blue
	DC24V	1.222A				
	AC110V	0.286A				
	AC220V	0.143A				



SDS/ SDSP Xenon Lamp Strobe Warning Light and Electric Horn Combination

- Convenient lamp exchange by adopting a connector type lamp installation
- Flashing rate : 60-80 flashes/min
- Ambient operating temperature : -30°C to +50°C

Model number	Voltage	Current	Bulb			Sound pattern and volume	Certificates	Weight	Color
			Spec	Standard	Parts no				
SDS SDSP	DC12V	2.933A	200V -550V	EUB0641 -1A(G) U Type	48	<ul style="list-style-type: none"> • WS-5 Warning sounds : 118dB • WP-5 Special warning sounds : 118dB • WM-5 Melodies : 118dB • WA-5 Alarms : 116dB • WV-5 Customizable voices : 113dB 		<ul style="list-style-type: none"> • SDS DC-3.28kg • SDSP DC-3.57kg 	<ul style="list-style-type: none"> • R-Red • A-Amber • G-Green • B-Blue
	DC24V	1.411A							
	AC110V	0.360A							
	AC220V	0.220A							

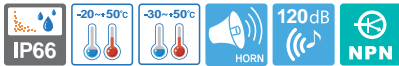


SD/ SDP Bulb Revolving Warning Light and Electric Horn Combination

- Revolving speed : 120-140RPM
- Ambient operating temperature : -20°C to + 50°C

Model number	Voltage	Current	Bulb			Sound pattern and volume	Certificates	Weight	Color
			Spec	Standard	Parts no				
SD SDP	DC12V	3.755A	12V15W	G23 15S	17	<ul style="list-style-type: none"> • WS-5 Warning sounds : 118dB • WP-5 Special warning sounds : 118dB • WM-5 Melodies : 118dB • WA-5 Alarms : 116dB • WV-5 Customizable voices : 113dB 	 	<ul style="list-style-type: none"> • SD DC-3.43kg • SDP DC-3.72kg 	<ul style="list-style-type: none"> • R-Red • A-Amber • G-Green • B-Blue
	DC24V	1.788A	24V15W	G23 15S	18				
	AC110V	0.422A	12V15W	G23 15S	17				
	AC220V	0.211A	12V15W	G23 15S	17				

SMD series



Ø150mm signal light and 120dB electric horn combination



SMDLR



SMDLP/SMDSP



SMDP

Warning Lights and Electric Horns for Vessels and Heavy Industry Applications



Common Specifications(SMDLR/ SMDL/ SMDS/ SMD)

- Materials : Lens-PC, Housing-AI, Protection cage-SUS316L, Reflector-PC/ Heat resistant ABS
- Cable entry : 1/2"PF
- Housing color : MUNSELL No. 7.5BG 7/2
- Protection rating : IP66



SMDLR/ SMDLRP LED Revolving Warning Light and Electric Horn Combination

- Revolving speed : 120-140RPM
- Ambient operating temperature : -20°C to + 50°C

Model number	Voltage	Current	Sound pattern and volume	Certificates	Weight	Color
SMDLR SMDLRP	DC12V	2.522A	<ul style="list-style-type: none"> • WS-5 Warning sounds : 120dB • WP-5 Special warning sounds : 120dB • WM-5 Melodies : 120dB • WA-5 Alarms : 118dB • WV-5 Customizable voices : 115dB 	-	<ul style="list-style-type: none"> • SMDLR DC-5.91kg • SMDLRP DC-6.20kg 	<ul style="list-style-type: none"> • R-Red • A-Amber • G-Green • B-Blue
	DC24V	1.322A				
	AC110V	0.326A				
	AC220V	0.163A				



SMDL/ SMDLP LED Steady/Flashing Warning Light and Electric Horn Combination

- Flashing rate : 60-80 flashes/min(Built-in steady/flashing selection switch)
- Ambient operating temperature : -30°C to +50°C

Model number	Voltage	Current	Sound pattern and volume	Certificates	Weight	Color
SMDL/ SMDLP	DC12V	2.400A	<ul style="list-style-type: none"> • WS-5 Warning sounds : 120dB • WP-5 Special warning sounds : 120dB • WM-5 Melodies : 120dB • WA-5 Alarms : 118dB • WV-5 Customizable voices : 115dB 	-	<ul style="list-style-type: none"> • SMDL DC-5.77kg • SMDLP DC-6.06kg 	<ul style="list-style-type: none"> • R-Red • A-Amber • G-Green • B-Blue
	DC24V	1.255A				
	AC110V	0.304A				
	AC220V	0.152A				



SMDS/ SMDSP Xenon Lamp and Electric Horn Combination

- Convenient lamp exchange by adopting connector type lamp installation
- Flashing rate : 60-80 flashes/min
- Ambient operating temperature : -30°C to +50°C

Model number	Voltage	Current	Bulb			Sound pattern and volume	Certificates	Weight	Color
			Spec	Standard	Parts no				
SMDS SMDSP	DC12V	2.822A	200V -550V	EUB0641 -1A(G) U Type	48	<ul style="list-style-type: none"> • WS-5 Warning sounds :120dB • WP -5 Special warning sounds :120dB • WM-5 Melodies : 120dB • WA-5 Alarms : 118dB • WV -5 Customizable voices : 115dB 	-	<ul style="list-style-type: none"> • SMDS DC-5.83kg • SMDSP DC-6.12kg 	<ul style="list-style-type: none"> • R-Red • A-Amber • G-Green • B-Blue
	DC24V	1.444A							
	AC110V	0.377A							
	AC220V	0.228A							



SMD/ SMDP Bulb Revolving Warning Light and Electric Horn Combination

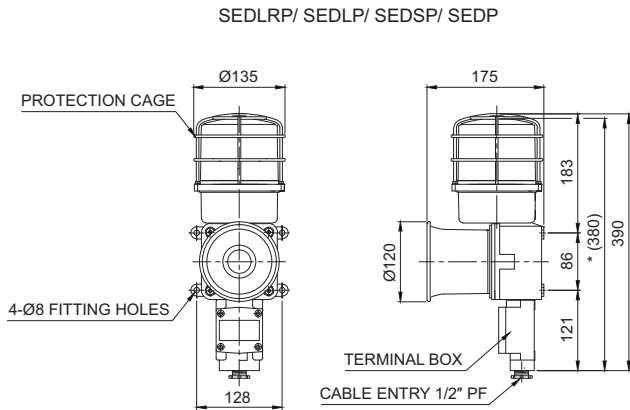
- Revolving speed : 120-140RPM
- Ambient operating temperature : -20°C to + 50°C

Model number	Voltage	Current	Bulb			Sound pattern and volume	Certificates	Weight	Color
			Spec	Standard	Parts no				
SMD SMDP	DC12V	3.644A	12V15W	G23 15S	17	<ul style="list-style-type: none"> • WS-5 Warning sounds :120dB • WP -5 Special warning sounds :120dB • WM-5 Melodies : 120dB • WA-5 Alarms : 118dB • WV -5 Customizable voices : 115dB 	-	<ul style="list-style-type: none"> • SMD DC-5.98kg • SMDP DC-6.27kg 	<ul style="list-style-type: none"> • R-Red • A-Amber • G-Green • B-Blue
	DC24V	1.822A							
	AC110V	0.448A							
	AC220V	0.224A							

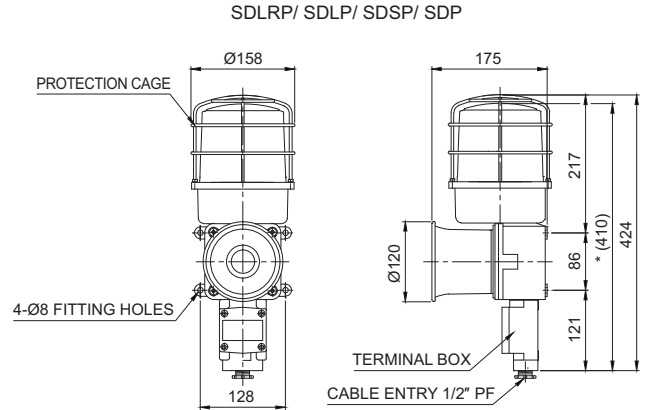


Technical Diagram

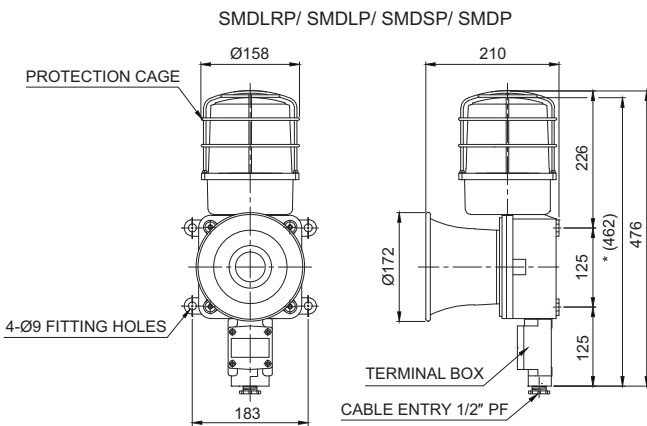
(Units : mm)



※ *(380) represents SEDLR/ SEDL/ SEDS/ SED size without protection cage.



※ *(410) represents SDLR/ SDL/ SDS/ SD size without protection cage.



※ *(462) represents SMDLR/ SMDL/ SMDS/ SMD size without protection cage.



Customization

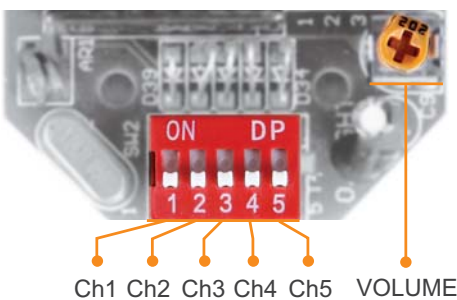
- Cable gland type
 - Customized cable entry(3/4"PF) available(Standard : 1/2"PF)
 - Customized external sound line type available : SED/SD/SMD series have built-in switch for sound tone selection
Customized wiring in case of external contact or transistor wiring type as sound tone selector (Model number : -LC)
 - Brass housing
Brass housing for SD/ SMD series are optionally provided which has excellent anti-corrosive properties
- ※ Color will be MUNSELL No. 7.5BG 7/2 when released.



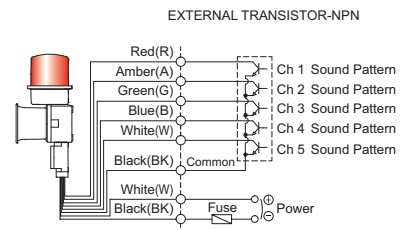
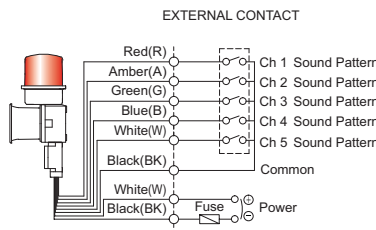
Sound Selection Instructions and Wiring

- Standard Type : Select sound using the switch inside of the unit. When you turn on the dip switch for each channel, the designated sound will be played.

- Customization : External contact(LC)



SED SERIES-DC/AC
SD SERIES-DC/AC
SMD SERIES-DC/AC



Ordering Specification

SEDLR	-	WA	-	24	-	R
[Model number]		[Sound]		[Voltage]		[Color]
<ul style="list-style-type: none"> • SEDLR • SEDS • SDLR • SDS • SMDLR • SMDS 	<ul style="list-style-type: none"> • SEDLRP • SEDSP • SDLRP • SDSP • SMDLRP • SMDSP 	<ul style="list-style-type: none"> • SEDL • SED • SDL • SD • SMDL • SMD 	<ul style="list-style-type: none"> • SEDLP • SEDP • SDLP • SDP • SMDLP • SMDP 	<ul style="list-style-type: none"> • WS-Warning sounds • WP-Special warning sounds • WM-Melodies • WA-Alarms • WV-Customizable voices 	<ul style="list-style-type: none"> • 12-DC12V • 24-DC24V • 110-AC110V • 220-AC220V 	<ul style="list-style-type: none"> • R-Red • A-Amber • G-Green • B-Blue

SC series

Warning Light & Electric Horn Combinations



SC series can combine all of our warning light and electric horn products into a single combination model depending on your specific needs

SC1

The budget model of small-sized warning light and electric horn combinations

- Protection rating : IP44

Specification for Standard Model

- Standard combination includes S100R products combination with SRN (same as pictured to the left)

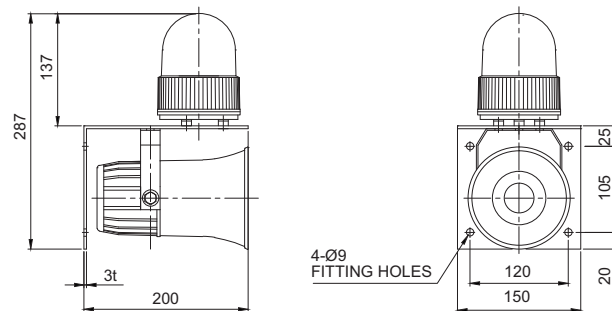
Technical Diagram

(Units : mm)



SC1

SC1



Customization

- Warning light : Select one from S100 series for the combination
- Electric horn : Select one from SN, SRN, SEN15/ 25 for the combination

SC2

Most commonly used standard-sized warning light and electric horn combination model

- Protection rating : IP44

Specification for Standard Model

- Standard combination includes S125U products combined with the SEN15 (Same as pictured to the left)

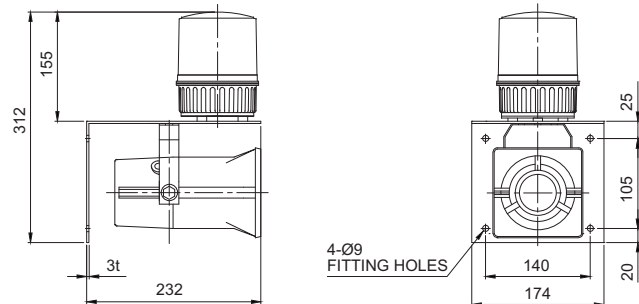
Technical Diagram

(Units : mm)



SC2

SC2



Customization

- Warning light : Select one from S125 series for the combination
- Electric horn : Select one from SN, SRN, SEN15/ 25 for the combination

SC series

Warning Light & Electric Horn Combinations



SC3

Waterproof, dustproof type warning light and electric horn combinations

- Protection rating : IP56

Common Specifications

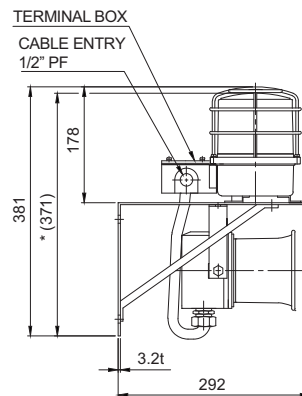
- Combination of SH1-2T and signal horn SEWN30L(Same as pictured to the left)

Technical Diagram

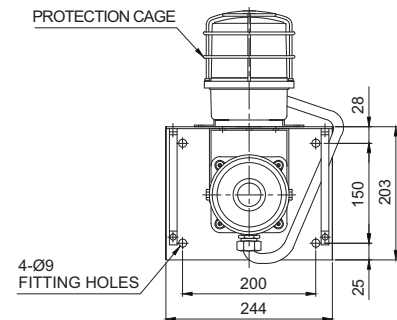
(Units : mm)



SC3



SC3



※ *(371) represents SC3 size without protection cage.

Customization

- Warning light : Select between models SH1P-2T and SH2P-2T series (Please refer to page 15-21)
- Electric horn : Choose one model among SEWN30L/50L, SEHN25 and SEHN50 (Please refer to page 43-48)
- Stainless steel bracket

Standard Model Number

SC1	-	220	-	R
[Model number]		[Voltage]		[Color]
<ul style="list-style-type: none"> • SC1 (S100R+SRN) • SC2 (S125U+SEN15) • SC3 (SH1P-2T+SEWN30L) 		<ul style="list-style-type: none"> • 12-DC12V • 24-DC24V • 110-AC110V • 220-AC220V 		<ul style="list-style-type: none"> • R-Red • A-Amber • G-Green • B-Blue

Ordering Specification

SC3	-	(SH1P-2T	-	R	+	SEWN30L	-	WS)	-	220
[Model number]		[Light type]		[Color]		[Horn type]		[Sound]			[Voltage]
<ul style="list-style-type: none"> • SC1 • SC2 • SC3 	<ul style="list-style-type: none"> • Select 1 model among S100 series • Select 1 model among S125 series • Select 1 model among SH1P-2T and SH2P-2T series 	<ul style="list-style-type: none"> • R-Red • A-Amber • G-Green • B-Blue 	<ul style="list-style-type: none"> • Select 1 model among SN, SRN and SEN15/25 • Select 1 model among SRN and SEN15/25 • Select 1 model among SEWN30L/50L and SEHN25/50 	<ul style="list-style-type: none"> • WS -Warning sounds • WP -Special warning sounds • WM -Melodies • WA -Alarms • WV -Customizable voices 	<ul style="list-style-type: none"> • 12-DC12V • 24-DC24V • 110-AC110V • 220-AC220V 						

※ Light sources can be selected among LED revolving, LED steady/flashing, xenon strobe and bulb revolving type.

SSL series

LED Signal Lights for Container Spreaders



Provides excellent durability to extreme vibration and shock

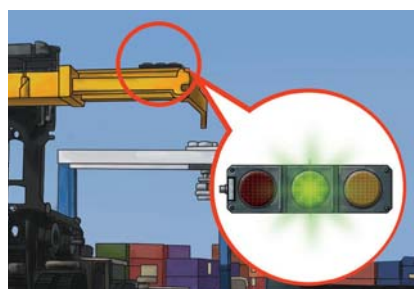
Suitable for container spreader, harbor loading equipment, and outdoor conveyor applications



**SSL100W/ SSL200W
SSL300W/ SSL400W**



**SSL100M/ SSL200M
SSL300M/ SSL400M**



SSL LED Steady Signal Lights for Container Spreaders

- Special anti-reflective lens applied to avoid mistaking the reflected sun light as a signal light (W type)
- M type has excellent visibility from a distance with clear and distinctive layer colors
- Superior durability in extreme vibration and shock thanks to a molded assembly process instead of conventional bolt fastened assembly method
- Customized color arrangement available(Lens color configuration is initiated from the side of cable entry)
- Materials : Housing-Al, Lens-PC
- Protection rating : IP68 (IEC60529)

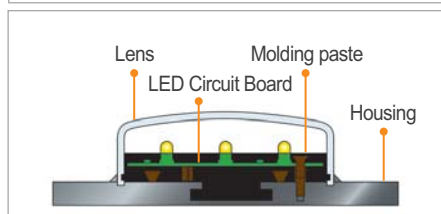
Specification						
Model number	Voltage	Current	Certificates	Weight	Cable entry	Color
SSL100	DC12V	0.280A	-	1.80kg	M12-5PIN C10-Cable (Customization)	● R-Red
	DC24V	0.151A		1.80kg		
	AC110V	0.040A		1.85kg		
	AC220V	0.040A		1.85kg		
SSL200	DC12V	0.560A		2.15kg		● R-Red ● G-Green
	DC24V	0.302A		2.15kg		
	AC110V	0.080A		2.20kg		
	AC220V	0.080A		2.20kg		
SSL300	DC12V	0.840A		2.50kg		● R-Red ● A-Amber ● G-Green
	DC24V	0.453A		2.50kg		
	AC110V	0.120A		2.55kg		
	AC220V	0.120A		2.55kg		
SSL400	DC12V	1.120A	2.95kg	● R-Red ● A-Amber ● G-Green ● B-Blue		
	DC24V	0.604A	2.95kg			
	AC110V	0.160A	3.00kg			
	AC220V	0.160A	3.00kg			

SSL series Vibration and Shock Test Conditions

Axial direction	Direction X	Direction Y	Direction Z
Vibration test conditions	10-38 Hz, 3.5mm 38-500 Hz, 20g 1 oct/min, 2 hours	10-38 Hz, 3.5mm 38-500 Hz, 20g 1 oct/min, 2 hours	10-38 Hz, 3.5mm 38-500 Hz, 20g 1 oct/min, 2 hours
Shock test conditions	50g 6 ms ±1000 shocks	50g 6 ms ±1000 shocks	50g 6 ms ±1000 shocks

Ordering Specification

SSL100W	-	24	-	R
[Model number]		[Voltage]		[Color]
<ul style="list-style-type: none"> • SSL100W • SSL200W • SSL300W • SSL400W 	<ul style="list-style-type: none"> • SSL100M • SSL200M • SSL300M • SSL400M 	<ul style="list-style-type: none"> • 12-DC12V • 24-DC24V • 110-AC110V • 220-AC220V 	<ul style="list-style-type: none"> • R-Red • A-Amber • G-Green • B-Blue 	



Cross-section of lens structure

SSL series has high resistance to vibration and shock by sealing the housing, lens, and LED circuit board together with epoxy mold compound.

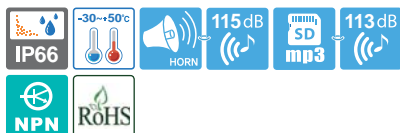
SSL series

LED Signal Lights for Container Spreaders

(Units : mm)

Technical Diagram	Wiring Instructions(External Contact)
<p style="text-align: center;">SSL100W/ SSL100M</p>	<p style="text-align: center;">SSL100W-AC/DC SSL100M-AC/DC</p> <ul style="list-style-type: none"> • M12-5PIN connector type Pin no. 3 is common, however equipped built-in Bridge circuit, power line can be wired to Pin no.3 or 4 regardless of polarity • C10 CABLE TREADING TYPE Treading power line, signal line standard : 7G×0.5mm² 600V/80°C WIRE 1,000mm treading
<p style="text-align: center;">SSL200W/ SSL200M</p>	<p style="text-align: center;">SSL200W-AC/DC SSL200M-AC/DC</p> <ul style="list-style-type: none"> • M12-5PIN connector type Pin no. 3 is common, however equipped built-in Bridge circuit, power line can be wired to Pin no.3 or 1, 4 regardless of polarity • C10 CABLE TREADING TYPE Treading power line, signal line standard : 7G×0.5mm² 600V/80°C WIRE 1,000mm treading
<p style="text-align: center;">SSL300W/ SSL300M</p>	<p style="text-align: center;">SSL300W-AC/DC SSL300M-AC/DC</p> <ul style="list-style-type: none"> • M12-5PIN connector type Pin no. 3 is common, however equipped built-in Bridge circuit, power line can be wired to Pin no.3 or 1, 2, 4 regardless of polarity • C10 CABLE TREADING TYPE Treading power line, signal line standard : 7G×0.5mm² 600V/80°C WIRE 1,000mm treading
<p style="text-align: center;">SSL400W/ SSL400M</p>	<p style="text-align: center;">SSL400W-AC/DC SSL400M-AC/DC</p> <ul style="list-style-type: none"> • M12-5PIN connector type Pin no. 3 is common, however equipped built-in Bridge circuit, power line can be wired to Pin no. 3 and pin no. 1, 2, 4, 5 regardless of polarity • C10 CABLE TREADING TYPE Treading power line, signal line standard : 7G×0.5mm² 600V/80°C WIRE 1,000mm treading

QWCD series



- Qlight's exclusive innovative design - the horn cover emits light!
- Combination of 31 sound options built in and SD Card(MP3) option



QWCD35 series



QWCD35 model applied in an automobile production plant environment.

LED Strobe Signal Light and Electric Horn Combinations

Common Specifications(QWCD35/ QWCD35SD/ QWCD50/ QWCD50SD)

- Easy device customization with built in sound selection function, volume adjustment function and an SD Card slot for user inputted tones
- 31 available tones that can be selected for a variety of environments
- The user can select their own tones by inputting the MP3 file directly into the SD Card
- 31 pre-recorded tones available via binary input
- Suitable for use in environments that require a tight seal and superior dust protection rated IP66
- Flashing rate : 60-80 flashes/min(steady/flashing mode selection available in built in switch)
- Materials : Horn-PC, Body-PC+ABS
- Ambient operating temperature : -50°C to +60°C(Standard type)
-20°C to +50°C(SD Card type)
- Protection Rating : IP66
- Certificates : CE Compliant, UL Listed
- Compliant with RoHS directive

QWCD35 LED Strobe Signal Light and Electric Horn Combination

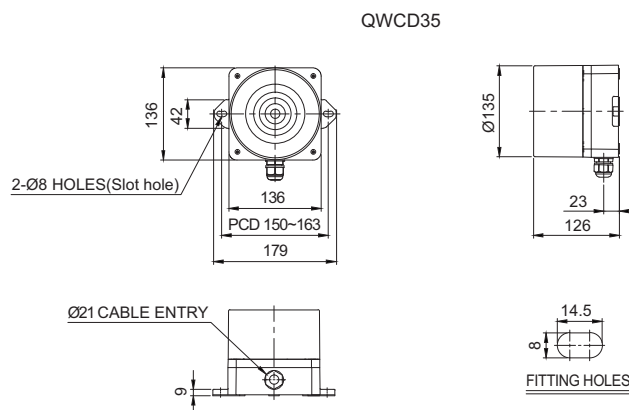
Model number	Voltage	Current	Sound Pattern and Volume	Certificates	Weight	Color
QWCD35 Built-in standard sound	DC12V-24V	Max 1.30A	• Bit Input : 5Ch (SD Card) • Binary Input : 31Ch	CE DC Only	1.10kg	• R-Red • A-Amber
QWCD35SD MP3	AC110V-220V	Max 0.31A	• Warning Sounds: 115dB • MP3 Messages : 113dB	UL DC Only	1.15kg	• G-Green • B-Blue

※ DC type model has a free-voltage range of 10V-30V.

※ AC type model has a free-voltage range of 100V-240V.

Technical Diagram

(Units : mm)



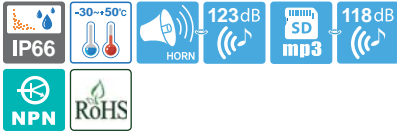
Customization

- External signal line available for users to connect their own sound input (Model number : -LC)

Ordering Specification

QWCD35	-	110/220	-	R	-	LC
[Model number]		[Voltage]		[Color]		[sound selection]
• QWCD35 • QWCD35SD		• 12/24 • -DC12V-24V • 110/220 • -AC110V-220V		• R-Red • A-Amber • G-Green • B-Blue		• Standard • -Built-in switch • LC • -External contact

QWCD series



- Qlight's exclusive innovative design - the horn cover emits light!
- Combination of 31 sound options built in and SD Card(MP3) option



QWCD50 series

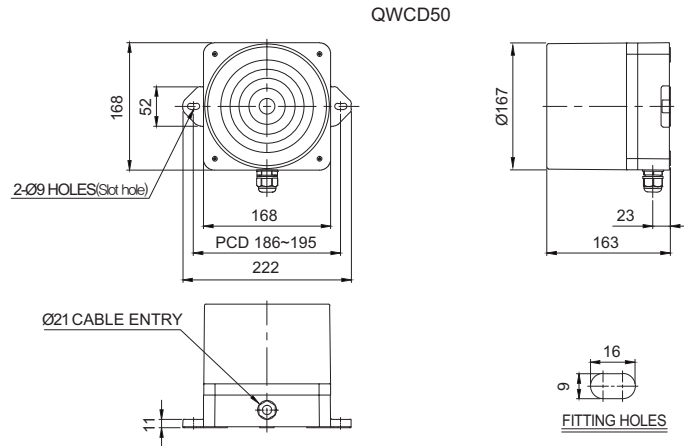
LED Strobe Signal Light and Electric Horn Combinations

QWCD50 LED Strobe Light and Electric Horn Combination

Model number	Voltage	Current	Sound Pattern and Volume	Certificates	Weight	Color
QWCD50	DC12V	6.4A	• Bit Input : 5Ch (SD Card)	CE DC Only	2.7kg	• R-Red • A-Amber • G-Green • B-Blue
Built-in standard sound	DC24V	3.2A	• Binary Input : 31Ch		2.7kg	
QWCD50SD	AC110V-220V	Max 0.600A	• Warning Sounds: 123dB	UL DC Only	3.0kg	
MP3			• MP3 Messages : 118dB			

※ AC type model has a free-voltage range of 100V-240V.

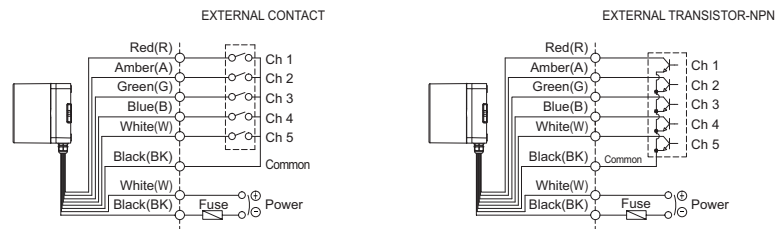
Technical Diagram (Units : mm)



Wiring Instructions

- Standard specification : Use internal switches
- Customization : Use external contact

QWCD-DC/AC



- Wiring to external contact and transistor
- Wiring to transistor, use the NPN transistor
- Power line standard UL1015 AWG18(0.75sq)×2C 400mm
- Signal line standard UL1007 AWG22(0.3sq) 400mm
- DC type : Black output line is negative(-)
- Channel selection : Bit input, 5 sound tones for each group
- Binary input 31 sound tones output

※ Please refer to Page 92 for set of channel input.
(If wiring is changed by channel selection switch)

Customization

- External sound selection line(Model number : -LC)

Ordering Specification

QWCD50	-	110/220	-	R	-	LC
[Model number]		[Voltage]		[Color]		[sound selection]
• QWCD50 • QWCD50SD		• 12-DC12V • 24-DC24V • 110/220 -AC110V-220V		• R-Red • A-Amber • G-Green • B-Blue		• Standard -Built-in switch • LC -External contact

Wall mount electric horn that offers 31 pre-recorded warning sounds and 30 user selected sound messages

- Bit input offers 5 channels with 6 sound outputs
- Binary input offers 31 sound outputs and SD Card (MP3) combination

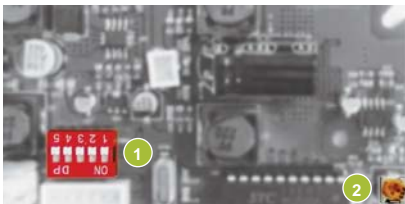


• Sound Selection and Volume Adjustment Instructions

QWH series has control switches inside the unit for sound selection and volume adjustment. You can play customized sound message(MP3) with SD Card.

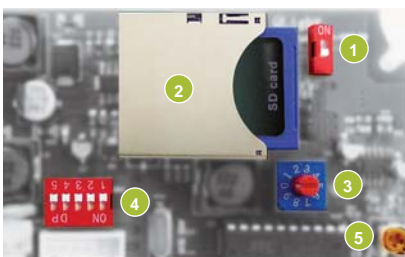
QWH series Product Category	
QWH35	Standard pre-recorded sound type
QWH35SD	SD Card(MP3) type
QWH50	Standard pre-recorded sound type with high volume output
QWH50SD	SD Card (MP3)type with high volume output

Pre-recorded sound type



- 1 Switch for channel selection
- 2 Switch for volume adjustment

SD Card (MP3) type



- 1 Switch for sound pattern selection
- 2 SD Card slot for MP3
- 3 Switch for play mode selection
- 4 Switch for channel selection
- 5 Switch for volume adjustment



Common Specifications(QWH35/ QWH35SD/ QWH50/ QWH50SD)

- Signal fit for the specific environment and condition.
- Options to select between 31 special warning sounds included in the pre-recorded sound type and SD Card(MP3) type
- Volume adjustment and sound selection switches located inside the unit. SD Card in the unit offers convenient operation.
- SD Card type allows the user to input the proper voice messages for specific operating conditions.
- The SD Card type 31 Special alarms built in which includes the voice alert from the SD Card (MP3). 31 special warning sounds are built both in pre-recorded sound type and SD Card type
- Offers both Binary and Bit input mode options (only the SD Card type has the bit input)
- Tightly sealed structure that blocks water and dust with IP66 protection rating suitable for outdoor installation
- Cable entry : PG 13.5
- Materials : Horn-PC, Housing-PC+ABS
- Ambient operating temperature : -30°C to +50°C(Standard type)
-30°C to +50°C(SD Card type)
- Protection rating : IP66
- Certificates : CE Compliant
- Compliant with RoHS directive

The input method of built-in sound type

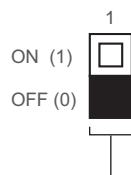
	1	2	3	4	5
ON	<input type="checkbox"/>	<input type="checkbox"/>	<input type="checkbox"/>	<input type="checkbox"/>	<input type="checkbox"/>
OFF	<input type="checkbox"/>	<input type="checkbox"/>	<input type="checkbox"/>	<input type="checkbox"/>	<input type="checkbox"/>
No.	1	2	3	4	5
0	0	0	0	0	0
1	0	0	0	0	1
2	0	0	0	1	0
:	:	:	:	:	:
31	1	1	1	1	1

Select from 31 pre-recorded output sound options by using a combination of the 5 channel input switches.

The binary input method allows you to express each of the 31 alarm sound signals with a "0" or "1" by switching the 5 channels on and off as shown in the table.

Sound selection instruction for SD Card type

You can select between pre-recorded sound mode and SD Card sound (MP3) mode with the SOUND selection switch.

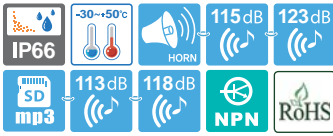


Selection between pre-recorded sound mode and SD Card sound mode
0 : pre-recorded sound mode
1 : SD Card sound mode

- 31 built-in alarm sounds and special sound
- Supports SD Cards for external sound (MP3)
- Binary Input : 31Ch
- Bit Input : 5Ch(SD Card only)
- A versatile product that can play MP3 files via the SD card
- For detailed setup instructions, please see page 92 for the special beep-type products.
- Channel 1 is set as the factory default

QWH series

Wall Mount Electric Horn with Pre-recorded Special Warning Sound



115dB



QWH35 series

123dB



QWH50 series

QWH35 Wall Mount Electric Horn MP3(SD Card) with Pre-recorded Special Warning Sound

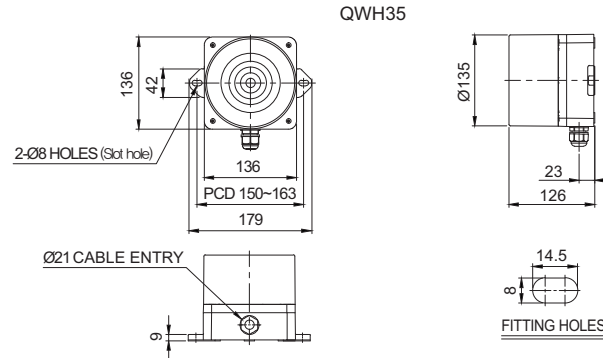
Model number	Voltage	Current	Volume	Binary input/ Channels	Certificates	Weight
QWH35	DC12V-24V	Max 0.800A	<ul style="list-style-type: none"> Special warning sound : 115dB MP3 sound : 113dB 	Binary Input : 31Ch	DC Only	0.9kg
QWH35SD	AC110V-220V	Max 0.290A		Bit Input : 5Ch (SD Card only) Binary Input : 31Ch		

※ DC type model has a free-voltage range of 10V-30V.
 ※ AC type model has a free-voltage range of 100V-240V.



Technical Diagram

(Units : mm)



QWH50 Wall Mount Electric Horn MP3(SD Card) with Pre-recorded Special Warning Sounds

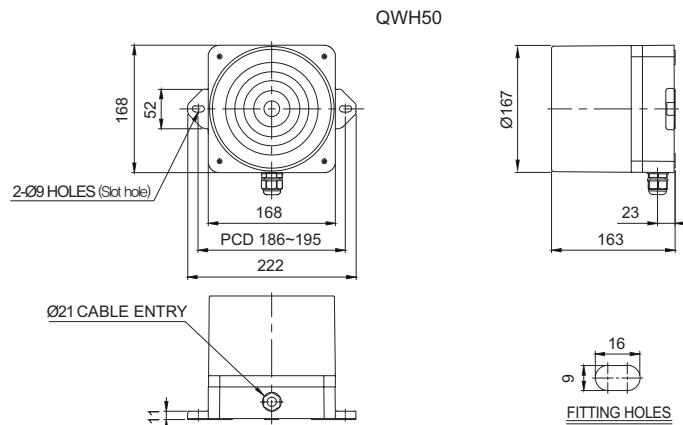
Model number	Voltage	Current	Volume	Binary input /Channels	Certificates	Weight
QWH50	DC12V DC24V	Max 5.800A Max 0.600A	<ul style="list-style-type: none"> Special warning sound : 123dB MP3 sound : 118dB 	Binary Input : 31Ch	DC Only	2.7kg
QWH50SD	AC110V-220V			Bit Input : 5Ch (SD Card only) Binary Input : 31Ch		

※ AC type model has a free-voltage range of 100V-240V.



Technical Diagram

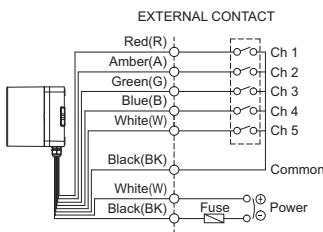
(Units : mm)



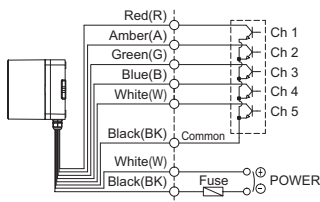
Sound Selection and Wiring Instructions

- Standard : Internal switch
- Customization : External contact(LC)

QWH35/ QWH50-DC/AC



EXTERNAL TRANSISTOR-NPN



- Channel selection, 5 sounds available with Bit input and 31 sound available with Binary input

- DC type : Black line is negative(-)

※ Please refer to Page 92 for channel input. (Wiring Instructions is changed to channel selection switches)



Customization

- External threading of sound selection signal line (Model number : -LC)



Ordering Specification

QWH50	-	110/220	-	LC
[Model number]		[Voltage]		[Sound selection]
<ul style="list-style-type: none"> • QWH35 • QWH35SD 		<ul style="list-style-type: none"> • 12/24-DC12V-24V • 110/220-AC110V-220V 		<ul style="list-style-type: none"> • Standard • Built-in Switch • LC • -External contact
<ul style="list-style-type: none"> • QWH50 • QWH50SD 		<ul style="list-style-type: none"> • 12-DC12V • 24-DC24V • 110/220-AC110V-220V 		

SN/SEHN25

Electric Horns for Vessels and Heavy Industrial Applications



Steel Housing

105dB



SN

115dB



SEHN25



Common Specifications(SN/ SEHN25/ SEHN50)

- Steel housing provides excellent vibration and shock resistance under seismic conditions
- A variety of sound selections between warning sounds, alarm sounds, melodies and voice messages to fit your sophisticated application needs
- Can adjust sound volume with the switch built inside the unit
- Materials : Housing-Steel, Horn housing -Steel
- Housing standard color : Red
- Ambient operating temperature : -25°C to +50°C
- Protection rating : IP55, Suitable for outdoor installation
- Certificates : KIMM Compliant

SN Max 105dB, Self Stand Type

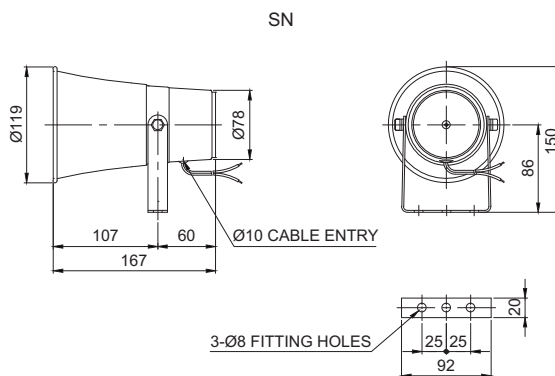
Model number	Sound pattern	Volume	Voltage / Current	Certificates	Weight
SN	WS 5 Warning sounds	105dB	DC12V / 0.266A		DC-0.91kg AC-1.06kg
	WM 5 Melodies	105dB	DC24V / 0.211A		
	WA 5 Alarms	103dB	AC110V / 0.062A		
	WV 5 Customizable sounds	95dB	AC220V / 0.031A		

* Please refer to Page 90 for detailed information about selectable sound patterns.



Technical Diagram

(Units : mm)



SEHN25 Max 115dB, Self Stand Type

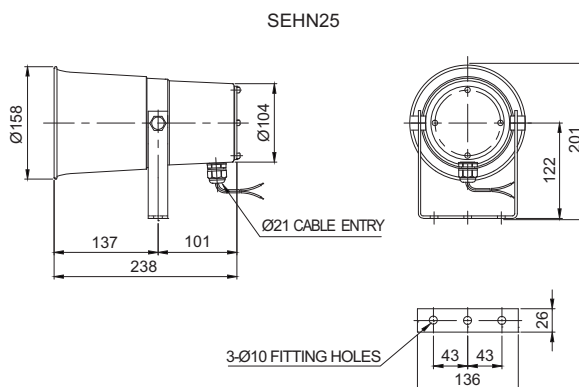
Model number	Sound pattern	Volume	Voltage / Current	Certificates	Weight
SEHN25	WS 5 Warning sounds	115dB	DC12V / 2.211A		DC-2.26kg AC-2.48kg
	WM 5 Melodies	115dB	DC24V / 1.022A		
	WA 5 Alarms	113dB	AC110V / 0.226A		
	WV 5 Customizable sounds	108dB	AC220V / 0.113A		

* Please refer to Page 90 for detailed information about selectable sound patterns.



Technical Diagram

(Units : mm)



SEHN50

Electric Horns for Vessels and Heavy Industrial Applications



Steel Housing

120dB



SEHN50

SEHN50 Max 120dB, Self Stand Type

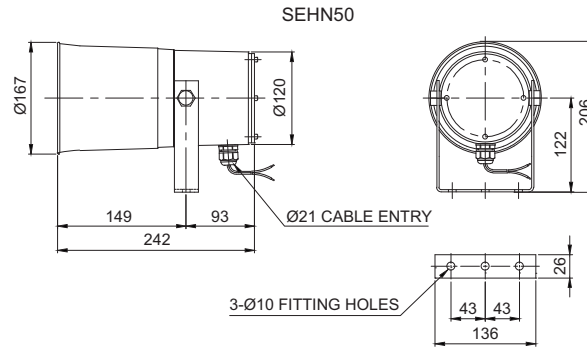
Model number	Sound pattern	Volume	Voltage / Current	Certificates	Weight
SEHN50	WS 5 Warning sounds	120dB	DC12V / 2.440A		DC-2.67kg AC-3.30kg
	WM 5 Melodies	120dB	DC24V / 1.186A		
	WA 5 Alarms	118dB	AC110V / 0.244A		
	WV 5 Customizable sounds	115dB	AC220V / 0.122A		

* Please refer to Page 90 for detailed information about selectable sound patterns.



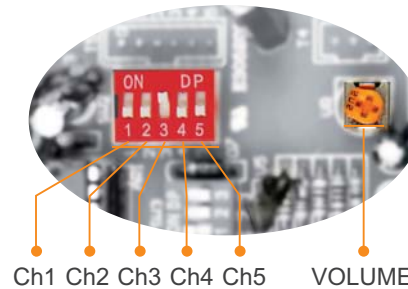
Technical Diagram

(Units : mm)



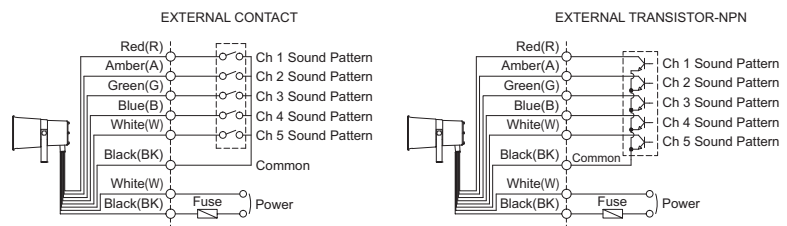
Sound Selection and Wiring Instructions

- Standard : Internal switch
- When each channel dip switch is on, a related sound will be played



- Customization : External contact(LC)

SN/ SEHN25/ SEHN50-DC/AC



Customization

- You can select the audible sound pattern using external contacts or transistor with a customized external sound line. (Model number : -LC)

- External power line standard : VCTF(0.75sq)×2C 400mm
- LC type signal line standard : UL1007 AWG22(0.3sq) 400mm
- Product can be wired regardless of polarity



Ordering Specification

SEHN25	-	WA	-	220	-	LC
[Model number]		[Sound]		[Voltage]		[Sound selection]
<ul style="list-style-type: none"> • SN • SEHN25 • SEHN50 		<ul style="list-style-type: none"> • WS-Warning • WM-Melody • WA-Alarm • WV-Customizable sound 		<ul style="list-style-type: none"> • 12-DC12V • 24-DC24V • 110-AC110V • 220-AC220V 		<ul style="list-style-type: none"> • Standard • -Built-in switch • LC • -External contact

SEWN series

Electric Horns for Vessels and Heavy Industrial Applications

Electric horns for vessels and heavy industrial applications featuring excellent sealing, corrosion resistance, and durability

Can select from wall mount type, self stand type, and terminal box type for your various application needs

SEWN30 - Max 118dB
SEWN50 - Max 120dB

Aluminum housing

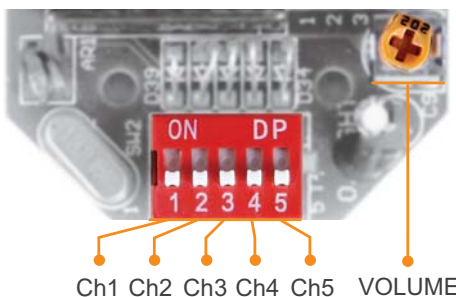


Common Specifications(SEWN30/ SEWN50)

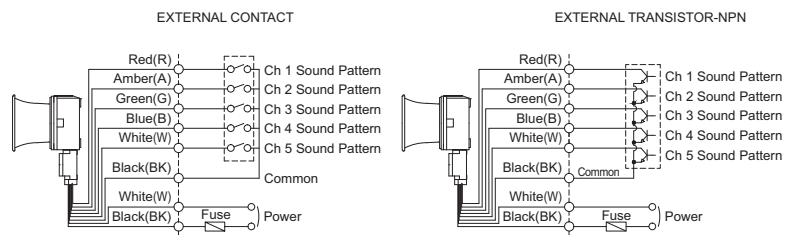
- Electric horn with tightly sealed structure has excellent durability. Suitable for vessels, steel industry, and outdoor plant applications
- Can select between a variety of mounting options (wall mount type, self stand type, and terminal box type)
- Aluminum housing provides excellent durability
- A variety of sound selection between warning sounds, alarm sounds, melodies and voice messages to fit your sophisticated application needs
- Can adjust sound volume with the dial built inside the unit
- Terminals located inside the terminal box or product
- Cable entry : 1/2"PF
- Materials : Housing-Al, Horn housing-PC/ SUS316L
- Standard Housing color : MUNSELL No. 7.5BG 7/2
- Ambient operating temperature : -30°C to +50°C
- Protection rating : IP56, Suitable for outdoor installation
- Certificates : KIMM, ABS, CCS, CE Compliant

Sound Selection and Wiring Instructions

- Standard type : Select sound using the switch inside the unit. When you turn on the dip switch for each channel the sound is turned on.
- Customized type : Select sound using the external contact(LC)
 You can select the audible sound pattern using external contacts or transistor with a customized external sound line(Model number : -LC)
- Product can be wired regardless of polarity



SEWN30 SERIES-DC/AC
 SEWN50 SERIES-DC/AC



SEWN30 series

Electric Horns for Vessels and Heavy Industries Applications



118dB



SEWN30E



SEWN30L



SEWN30T

- SEWN30E/ SEWN30L model uses flexible connector at cable entry and SEWN30T model use 15C nipple at cable entry.
- Cable gland is customizable



Flexible connector



15C nipple

SEWN30 series Max 118dB

Model number	Sound pattern	Volume	Voltage / Current	Certificates	Weight
SEWN30E -Wall mount	WS 5 Warning sounds	118dB	DC12V / 2.211A DC24V / 1.022A AC110V / 0.226A AC220V / 0.113A	 	SEWN30E DC-1.76kg AC-2.11kg
	WP 5 Special warning sounds	118dB			
SEWN30L -Self stand	WM 5 Melodies	118dB			SEWN30L AC-1.74kg AC-2.13kg
SEWN30T -Wall mount with terminal box	WA 5 Alarms	116dB			
	WV 5 Customizable sounds	113dB			

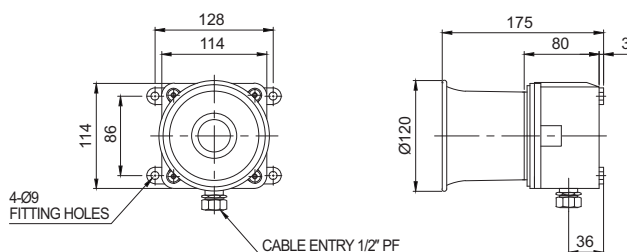
* Please refer to Page 90 for detailed information about selectable sound patterns.



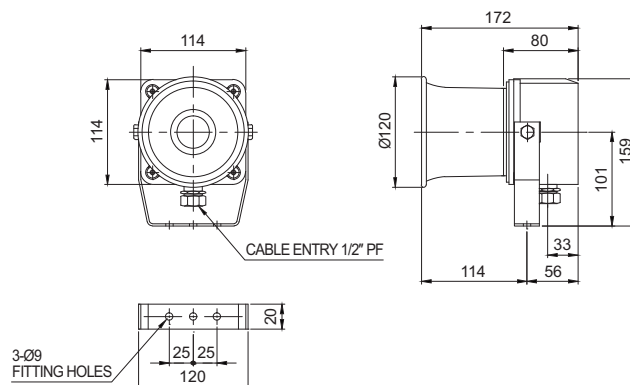
Technical Diagram

(Units : mm)

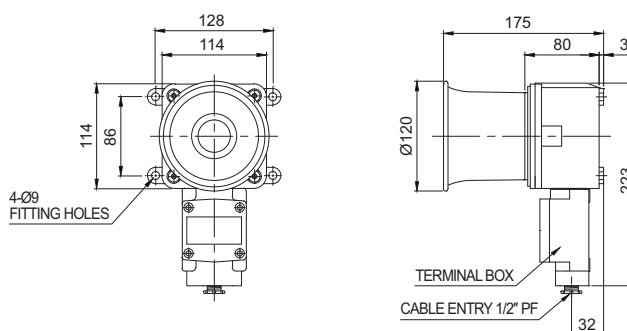
SEWN30E



SEWN30L



SEWN30T



SEWN50 series

Electric Horns for Vessels and Heavy Industries Applications



SEWN50 series Max 120dB

Model number	Sound pattern	Volume	Voltage / Current	Certificates	Weight
SEWN50E -Wall mount	WS 5 Warning sounds	120dB	DC12V / 2.440A DC24V / 1.186A AC110V / 0.244A AC220V / 0.122A	 DC24V only	SEWN50E DC-4.22kg AC-4.52kg
	WP 5 Special warning sounds	120dB			
SEWN50L -Self stand	WM 5 Melodies	120dB			SEWN50L AC-4.20kg AC-4.50kg
SEWN50T -Wall mount with terminal box	WA 5 Alarms	118dB			
	WV 5 Customizable sounds	115dB			SEWN50T DC-4.65kg AC-4.95kg

* Please refer to Page 90 for detailed information about selectable sound patterns.



SEWN50E



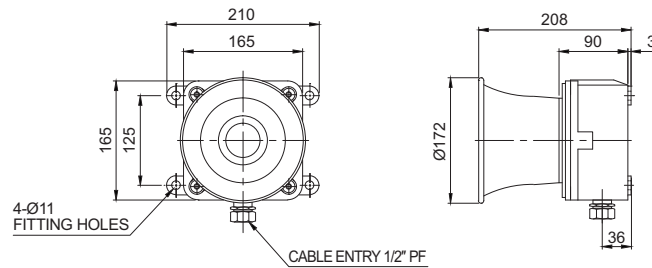
Technical Diagram

(Units : mm)



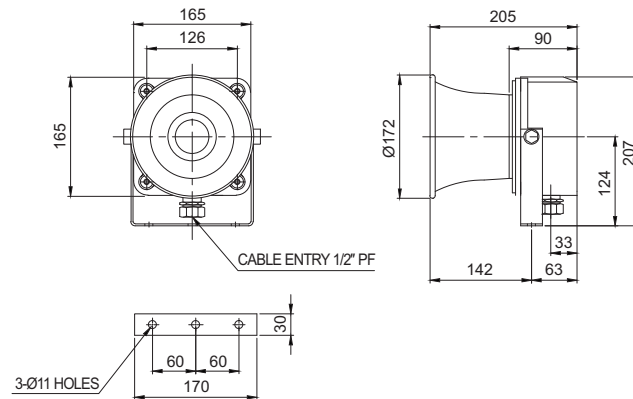
SEWN50L

SEWN50E

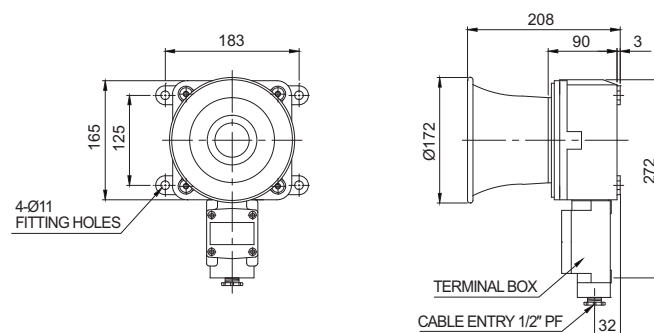


SEWN50T

SEWN50L



SEWN50T



- SEWN50E/ SEWN50L model uses flexible connector at cable entry and SEWN50T model uses 15C nipple at cable entry.
- Cable gland is customizable



Flexible connector



15C nipple

SEWN series

Electric Horns for Vessels and Heavy Industries Applications

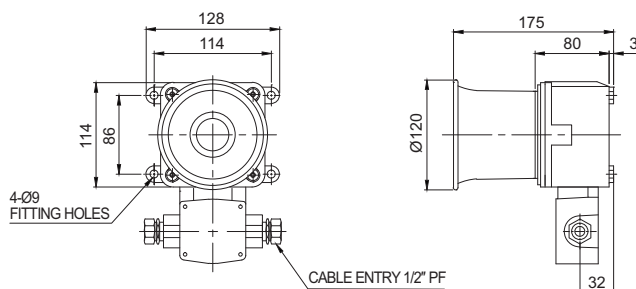


2 Cable Entry Terminal Box Type Technical Diagram

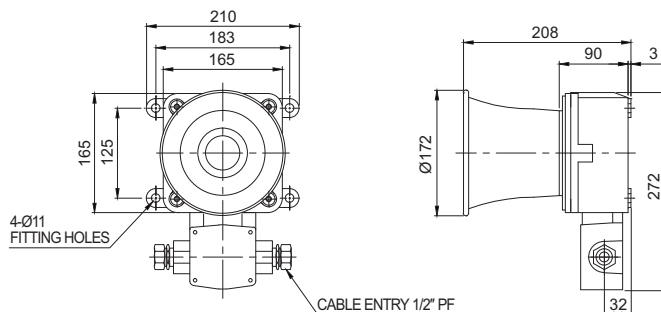
(Units : mm)



SEWN30-2T



SEWN50-2T



Customization

- Cable gland available
- 3/4"PF cable entry (Standard : 1/2"PF)
- 2 cable entries terminal box :
Customized terminal box available with two cable entries in opposite directions (Model number : SEWN30-2T, SEWN50-2T)
- Brass housing product :
Brass housing products provide improved corrosion resistance.
- ※ Color will be MUNSELL No. 7.5BG 7/2 when released.
- External threading of sound line (Model number : -LC)



Brass housing product



Ordering Specification

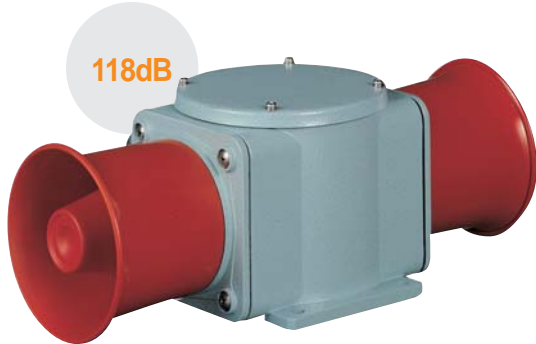
SEWN30T	WS	220	LC
[Model number]	[Sound]	[Voltage]	[Sound selection]
<ul style="list-style-type: none"> • SEWN30E • SEWN30L • SEWN30T • SEWN50E • SEWN50L • SEWN50T 	<ul style="list-style-type: none"> • WS-Warning • WP-Special warning sounds • WM-Melody • WA-Alarm • WV-Customizable sound 	<ul style="list-style-type: none"> • 12-DC12V • 24-DC24V • 110-AC110V • 220-AC220V 	<ul style="list-style-type: none"> • Standard • Built-in switch • LC • External contact

SHDN series

Dual-Facing Electric Horns for Vessels and Heavy Industry Applications



Aluminum housing



SHDN30

SHDN30 Max 118dB×2 Direct Mount Type

- Electric horn with tightly sealed structure and excellent durability, suitable for vessels, steel industry, and outdoor plant applications
- Aluminum housing provides excellent durability
- A variety of sound selection between warning sounds, alarm sounds, melodies and voice messages to fit your sophisticated application needs
- Terminals located inside the terminal box or product
- Cable entry : 1/2"PF
- Materials : Housing-AI, Horn housing-PC
- Can adjust sound volume with the switch built inside the unit
- Standard Housing color : MUNSELL No. 7.5BG 7/2
- Ambient operating temperature : -30°C to +50°C
- Protection rating : IP56, Suitable for outdoor installation

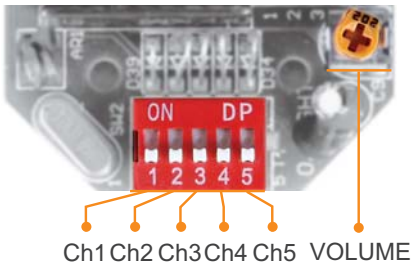
Model number	Sound pattern	Volume	Voltage / Current	Certificates	Weight
SHDN30	WS 5 Warning sounds	118dB×2	DC12V / 4.422A DC24V / 2.044A AC110V / 0.453A AC220V / 0.226A	-	DC-3.49kg AC-4.21kg
	WP 5 Special warning sounds	118dB×2			
	WM 5 Melodies	118dB×2			
	WA 5 Alarms	116dB×2			
	WV 5 Customizable sounds	113dB×2			

* Please refer to Page 90 for detailed information about selectable sound patterns.



Sound Selection Instructions

- Standard Type : Select sound using the switch inside of the unit. When you turn on the dip switch for each channel, the designated sound will be played.



- Customized type : Select using the external contact(LC)
You can select the audible sound pattern using external contacts or transistor with a customized external sound line (Model number : -LC)
- Product can be wired regardless of polarity



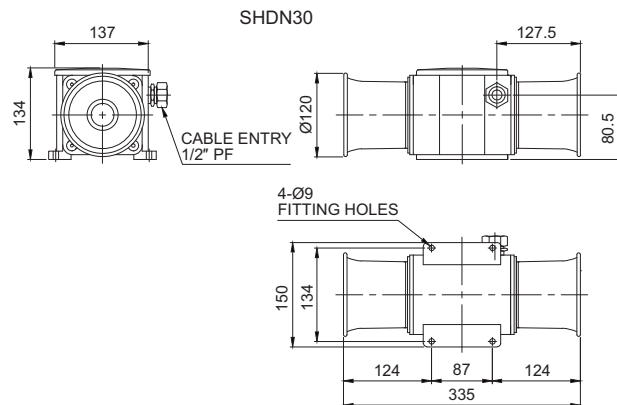
Customization

- Customized cable entry(3/4"PF) available
- Customized external sound line type available

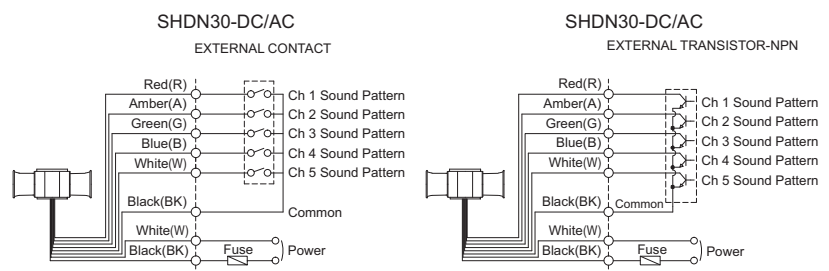


Technical Diagram

(Units : mm)



Wiring Instructions



Ordering Specification

SHDN30	WP	110	LC
[Model number]	[Sound]	[Voltage]	[Sound selection]
• SHDN30	• WS-Warning • WP-Special warning sounds • WM-Melody • WA-Alarm • WV-Customizable sound	• 12-DC12V • 24-DC24V • 110-AC110V • 220-AC220V	• Standard • -Built-in switch • LC • -External contact

SM series

Motor Sirens



110dB



SM30

116dB



SM40

! Continuous operation rating time is 10 mins. Over 10 mins of continuous operation may cause motor damage. Please be careful.

Ordering Specification

SM30	-	24
[Model number]		[Voltage]
<ul style="list-style-type: none"> SM30 SM40 		<ul style="list-style-type: none"> 12-DC12V 24-DC24V 110-AC110V 220-AC220V

SM30 Miniature Motor Siren

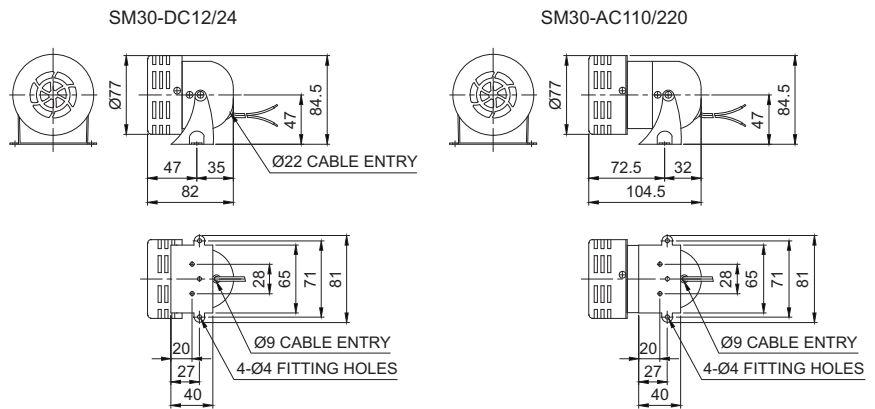
- Ø80mm compact structure with 110dB sound output
- Motor RPM : 10,000RPM
- Materials : Steel
- Power consumption : 40W
- Protection rating : IP 44
- Housing standard color : Red
- Insulation resistance : 100MΩ(at 500 VDC)
- Ambient operation temperature : -25°C to +50°C

Specifications

Model number	Volume	Voltage	Current	Certificates	Weight	Rated time
SM30	110dB	DC12V	3.222A	-	0.22kg	10 min
		DC24V	1.779A		0.22kg	
		AC110V	1.333A		0.42kg	
		AC220V	1.000A		0.42kg	

Technical Diagram

(Units : mm)



SM40 Miniature Motor Siren

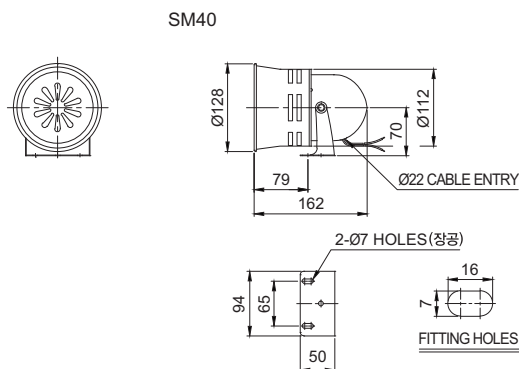
- Ø100mm compact structure with 116dB sound output
- Motor RPM : 7,000RPM
- Materials : ABS
- Power consumption : 80W
- Protection rating : IP 44
- Housing standard color : Gray
- Insulation resistance : 100MΩ(at 500 VDC)
- Ambient operation temperature : -25°C to +50°C

Specifications

Model number	Volume	Voltage	Current	Certificates	Weight	Rated time
SM40	116dB	DC12V	6.778A	-	0.53kg	10 min
		DC24V	3.666A		0.53kg	
		AC110V	1.000A		0.68kg	
		AC220V	0.722A		0.68kg	

Technical Diagram

(Units : mm)



SM series

Motor Sirens



120dB



SM200

123dB



SM400



Continuous operation rating time of SM400 is 3 mins. Over 3 mins of continuous operation may cause damage to the motor. Please be careful.



Ordering Specification

SM200

24

[Model number]

[Voltage]

- SM200
- SM400

- 24-DC24V
- 110-AC110V
- 220-AC220V

SM200 120dB Heavy-Duty Motor Siren

- Excellent durability and high volume are suitable for noisy environment
- Motor RPM : 7,200RPM
- Materials : Steel/Al
- Ambient operation temperature : -25°C to +50°C
- Certificates : CE Compliant
- Housing standard color : Red
- Insulation resistance : 100MΩ(at 500 VDC)
- Protection rating : IP 44



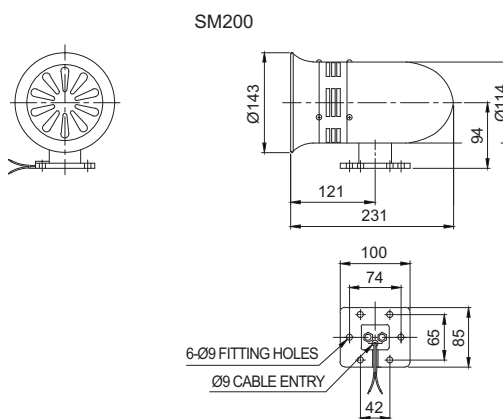
Specifications

Model number	Volume	Voltage	Current	Certificates	Weight	Rated time
SM200	120dB	DC24V	7.820A	CE	2.19kg	10 min
		AC110V	2.105A		2.55kg	
		AC220V	1.005A		2.55kg	



Technical Diagram

(Units : mm)



SM400 Sound 123dB Heavy-Duty Motor Siren

- 123dB high volume model suitable for long-distance audible signal in noisy environments
- Motor RPM : 7,600RPM
- Materials : Steel/ABS
- Ambient operation temperature : -25°C to +50°C
- Housing standard color : Red
- Insulation resistance : 100MΩ(at 500 VDC)
- Protection rating : IP 44



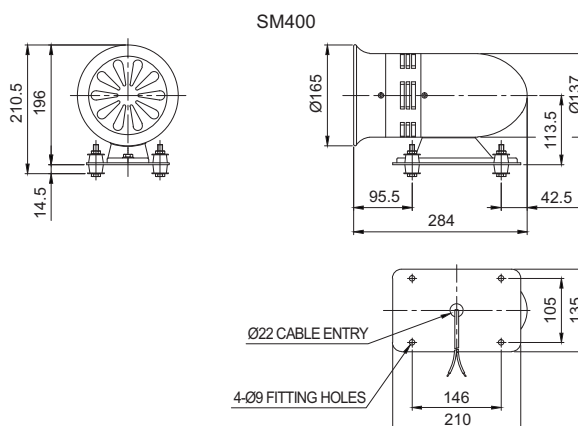
Specifications

Model number	Volume	Voltage	Current	Certificates	Weight	Rated time
SM400	123dB	DC24V	12.000A	-	3.19kg	3 min
		AC110V	6.300A		3.75kg	
		AC220V	3.800A		3.75kg	



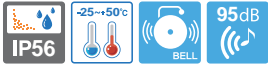
Technical Diagram

(Units : mm)



SAB series

Alarm Bells with Lamp Attached for Vessels and Heavy Industrial Applications



SAB130
-Bell housing Ø130mm

SAB200
-Bell housing Ø200mm

95dB



SAB130

95dB



SAB200

SAB130/ SAB200 Max 95dB

- Electric solenoid bell system provides excellent durability to vibration and shock for vessels and large facilities
- Special material for bell housing provides clear and crisp alarm sound
- Excellent vibration and shock resistant structure for superior durability
- Easy wiring and maintenance with terminal box attached
- Lamp attached provides visual signals
- Bell and lamp operation is synchronized. Each function can also operate separately
- Sound volume : Max 95dB at 1m
- Standard color : Housing-beige, Bell/ Lamp-Red
- Materials : Bell-Steel, Housing-ABS
- Ambient operating temperature : -25°C to +50°C
- Protection rating : IP56
- Cable entry : PG19



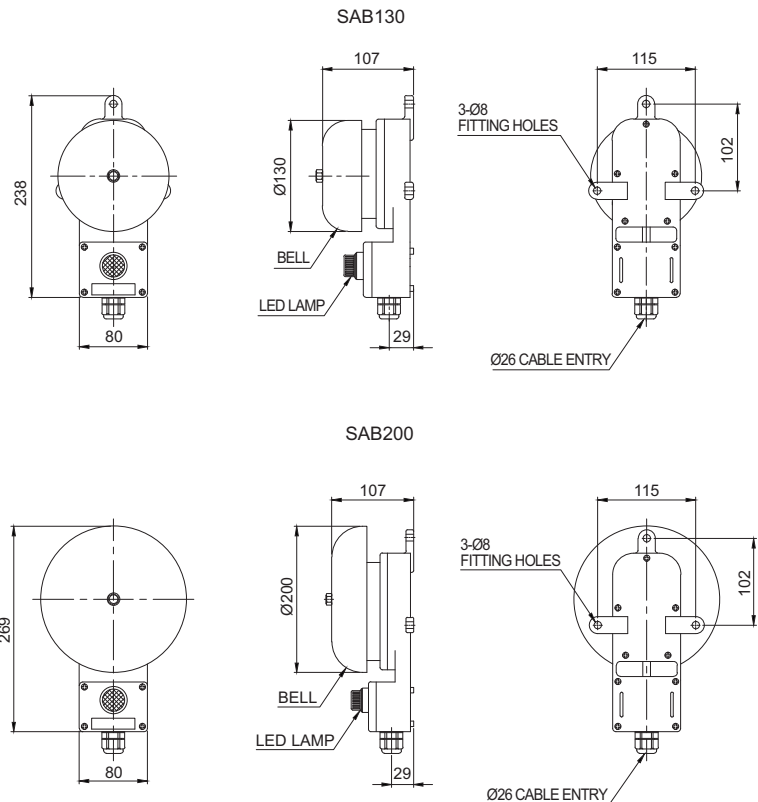
Specifications

Model number	Frequency	Volume	Bell diameter	Voltage	Current	Certificates	Weight	Bell/ Lamp color
SAB130	400-600Hz	95dB	130mm	DC24V	1.100A	-	1.88kg	● R-Red
SAB200				AC110V	0.350A			
			200mm	AC220V	0.300A		2.00kg	



Technical Diagram

(Units : mm)



Customization

- Two way cable entries with PG19

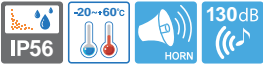


Ordering Specification

SAB200	-	110	-	CG
[Model number]		[Voltage]		[Cable gland]
<ul style="list-style-type: none"> • SAB130 • SAB200 		<ul style="list-style-type: none"> • 24-DC24V • 110-AC110V • 220-AC220V 		<ul style="list-style-type: none"> • Standard • Back wiring type • CG • Built-in cable gland type

SANA series

Air Horns for Vessels and Heavy Industrial Applications



SANA200-200-300HZ
SANA400-400-600HZ
SANA700-700-800HZ



SANA200



Common Specifications(SANA200/ SANA400/ SANA700)

- High volume horn uses compressed air to power the high pitched sound made with the diaphragm
- Uses a special material which consumes a small quantity of compressed air and has long durability
- Suitable for applications like a large and noisy engine rooms, a phone alarm in a pump room, or as an emergency alarm
- Sound volume : Max 130dB at 1m
- Housing standard color : ● R-Red, ● B-Black, ● 7.5BG-MUNSELL No.7.5BG 7/2
- Materials : Horn-PC, Solenoid valve box-ABS
- Air pressure : 5-7kg/cm²
- Ambient operation temperature : -20°C to +60°C
- Protection rating : IP 56
- Certificates : KIMM Compliant

Model number	Frequency	Volume	Certificates	Weight	Voltage	Current	Color
SANA200	200-300Hz	Max 130dB		1.19kg	DC24V	0.448A	● R-Red
SANA400	400-600Hz			1.13kg	AC110V	0.111A	● BK-Black
SANA700	700-800Hz			1.07kg	AC220V	0.055A	● 7.5BG

SANA200 200-300Hz



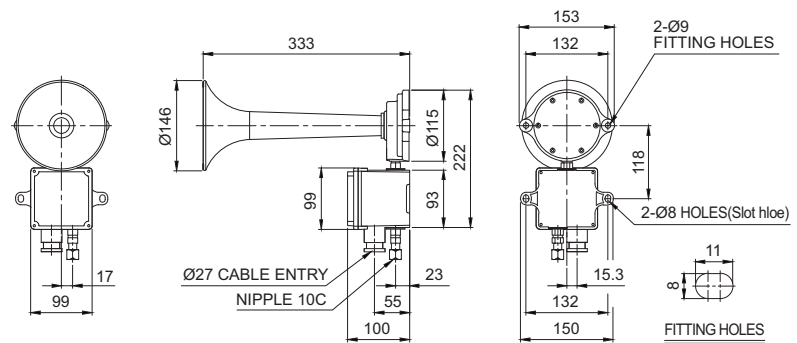
Technical Diagram

(Units : mm)



SANA400

SANA200



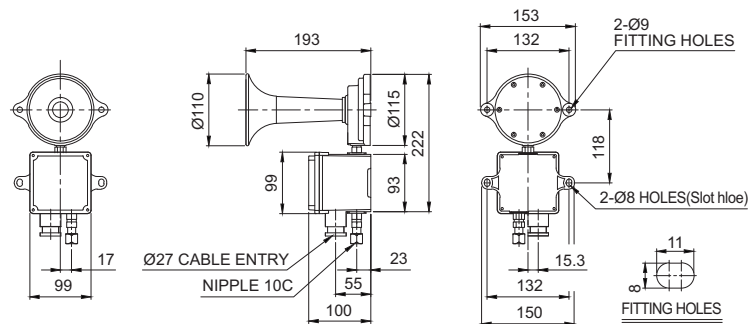
SANA400 400-600Hz



Technical Diagram

(Units : mm)

SANA400



SANA series

Air Horns for Vessels and Heavy Industrial Applications

SANA700 700-800Hz

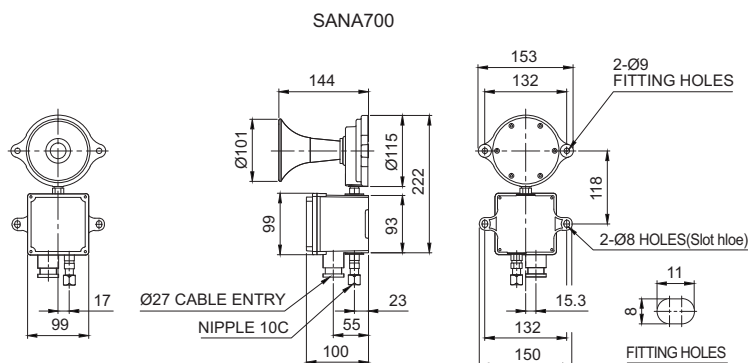


Technical Diagram

(Units : mm)



SANA700



Ordering Specification

SANA200	220	R
[Model number]	[Voltage]	[Color]
• SANA200	• 24-DC24V	• R-Red
• SANA400	• 110-AC110V	• BK-Black
• SANA700	• 220-AC220V	• 7.5BG

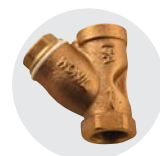


Customization

- Horn and solenoid valve box available separately for individual installation
- Non return valve and Y filter installation



Non return valve



Y filter

QEB

Explosion Proof Solenoid Valve Box



QEB



Ordering Specification

QEB	24
[Model number]	[Voltage]
• QEB	• 24-DC24V
	• 110-AC110V
	• 220-AC220V



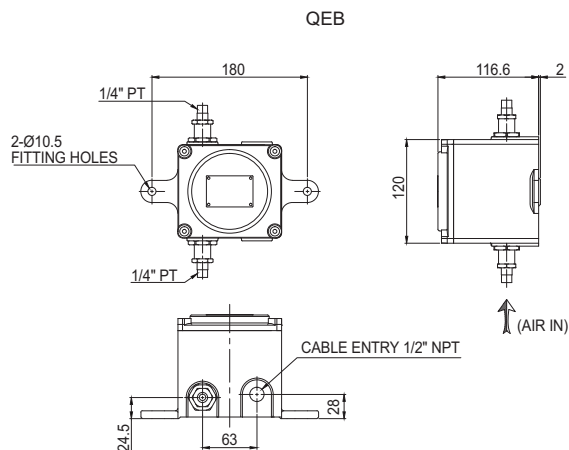
QEB Explosion Proof Solenoid Valve Box

- Materials : Housing, Cover-Al
- Ambient operation temperature : $-40^{\circ}\text{C} \leq T_{\text{amb}} \leq +60^{\circ}\text{C}$
- Protection rate : Ex d IIC T6, IP66
- Certificates : KIMM Compliant
- Left picture has a cable gland installed, explosion proof cable gland configuration is available as a customized option



Technical Diagram

(Units : mm)



Technical Certification

Qlight products are designed to meet strict quality and technical standards. Thus, the Qlight brand is widely recognized for its high quality and technical innovations from leading institutions around the world.



ISO International Organization for Standardization

Qlight quality assurance systems have been certified by ISO by applying the ISO 9001:2008, KS Q ISO 9001:2009 regulation.



IECEX International Explosion Proof Certification (IECEX)

Certified that Qlight's products are being manufactured and manage according to international standards.



ATEX The European Regulatory Framework or Manufacture, Installation and Use of Equipment in Explosive Atmospheres

Qlight explosion proof products comply with ATEX Directives 94/9/EC.



NEPSI National Supervision and Inspection Center for Explosion Protection and Safety of Instrumentation

Qlight's design and manufacturing system meets the People's Republic of China National explosion proof Standard. (Chinese Standard-GB3836/GB12476)



KGS Korea Gas Safety Corporation

Approved from "Korea Gas Safety Corporation" that Qlight's design and manufacturing system meets the standard of KGS.



KOSHA Korea Occupational Safety and Health Agency

Approved by the "Korea Occupational Safety and Health Agency" that Qlight's design and manufacturing system meets the standard of KOSHA.



ABS American Bureau of Shipping

Qlight's design and quality assurance system has been certified by the American Bureau of Shipping.



LR Lloyd's Register

Qlight design and quality assurance system has been certified from Lloyd's Register.



CCS China Classification Society

Qlight design and quality assurance system has been certified by the China Classification Society.



RMRS Russian Maritime Register of Shipping

Qlight design and quality assurance system has been certified from Russian Maritime Register of Shipping.



KR Korean Register of Shipping

Qlight design and quality assurance system has been certified by the Korean Register of Shipping.



CE European Commission

Qlight has been certified by the European Commission.



UL Underwriters Laboratories

Qlight design and quality assurance system has been certified from UL to ensure the stability of consumption goods and to protect consumers.



KC Korea Safety Certification

Qlight products are certified by KC for preventing accident caused by fire.



CCC China Compulsory Certificate

Qlight has obtained CCC which guarantees safety, protection against fraud, environment, etc.



ICAO International Civil Aviation Organization

Qlight guarantees our products satisfy the criteria regulated by the International Civil Aviation Organization (ICAO, FAA).



E-mark Commission Directive Regarding Vehicle Industry

Qlight has obtained EU mark for approved vehicles and vehicle components sold into the EU (EEA : European Economic Area)



RoHS Restriction of Hazardous Substances Directive

Qlight complies with the Restriction of Hazardous Substances Directive by limiting its use of hazardous materials.

Light Source of Warning Light/ Signal Light

SELECTION OF WARNING LIGHT

The selection of signaling devices will depend on the particular situation and environment.

- Whether the location of installation is dark or bright.
- Whether the signal transmission range should be short or long, or should have good visibility.
- Whether you need an economical but short lifetime product or upscale product with longer lifetime.
- Whether the environment is harsh with vibration and shock, or the environment is stable so that the life of the lights can be guaranteed.
- The selection of signaling device can be different depending on the situation and environment. The convenience and efficiency of maintenance should also be considered.

※ Factors to consider in signal selection

1. Purpose
2. Signal transmission
3. Environment
4. Budget
5. Ease of maintenance

TYPE OF LIGHT SOURCE



Bulb

Light bulb is a light source that uses temperature reflection generated by the current flowing through the light bulb filament (thin line of metal), tungsten wire coil filament is often used. The hot filament is protected from oxidation with a glass sphere injected with inert gas (Argon gas, etc.). Typical characteristics of the gas injected bulb is described below.

1. If the input voltage decreases more than 10% of the rated voltage, the bulb life increases four times than before, and the power consumption is reduced by 85%.
2. On the other hand, If input voltage is 10% higher than the rated voltage, the life of the bulb is shortened by about 30% and the power consumption increases about 16%, and the brightness is increased by about 40%. The standard service life of a normal bulb is about 1,000 - 1,500 hours.



LED

The LED is a light emitting diode which emits light by injecting a current in the PN junction of the special semiconductor, semiconductors such as GaAs, GaP that Maximizes the electro-optical conversion effects are used. Like other semiconductors, over-voltage or ambient temperature affects the lifetime, but due to the absence of mechanical abrasion of the part, LED is shock/ vibration resistant so there is no need for proper seismic design. The standard service life of an LED is about 50,000 hours.



Xenon Lamp

Xenon lamp is a flash type light source that emits bright light instantly by inserting high energy into the lamp. Compared with the steady type lamp, xenon lamps need a lot of input power instantly and a extremely large amount of light it is diffused.

The lamp is filled with xenon(Xe) gas due to the convenience of the production(choice of materials), its use, xenon lamp was named after the xenon gas that it uses. xenon lamps are also resistant to vibration due to its mounting method. In addition, it is visible even in bright environments not only because the spectacle distribution of the visible light is close to the sunlight, it uses the same method as the strobe of the camera.

Warning Light/ Indicator Light Operating Principle



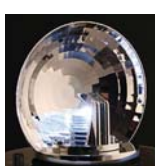
Bulb Steady/ Flashing Type

- Highly diffusible light bulb that refracts light through a special lens and can be used in a steady or flashing state



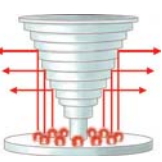
Bulb Revolving Type

- By combining a highly diffusible light bulb and a reflector, light is reflected in a parallel beam with a rotating cycle
- Our bulb revolving model has a long lifetime enabled by using a high durability bulb and a power transfer system that minimizes noise and abrasion



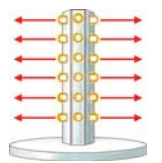
LED Revolving Type

- The combination of an LED and a reflector creates a parallel light beam with a rotating cycle
- Our LED revolving model is patented for emitting light with the same level of uniformity and brightness compared to the bulb reflecting type



LED Steady/ Flashing Type

- The indirect light distribution system uses a special structure to radiate a uniform light signal throughout the entire body of the lens by using a multi-stage reflector
- The direct light distribution system uses a high-intensity LED light and diffusion lens to transfer signal over a long distance. Qlight LED lights / flashing lights are equipped with two structures depending on the model type, Steady or Flashing Type



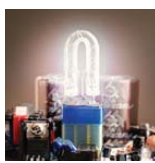
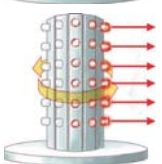
LED Strobe-Type

- By shortening the LED flashing period and supplying the maximum current to the LED, it produces a flash effect just like the xenon lamp



LED Simulated Revolving Type

- By uniformly arranging the LED lens in a 360 degree circumferential direction, it will produce a flash in a regular rotating sequence
- The visual effect looks just the same as the revolving model



Xenon Lamp Strobe-Type

- The strobe type model uses a xenon lamp that instantly emits a high brightness light by supplying large energy
- Requires more power than other flashing type models, and the flash is brighter in comparison
- Has excellent vibration resistance compared to regular light bulbs but is not superior to LEDs
- Can spread strong light signals in all directions because of the light projecting structure

Pre-recorded Sound Tone and Sound Combination Chart

■ 20 pre-recorded sound tones for standard type products

Sound Number	Sound Tone	Sound Number	Sound Tone
SND01	Fire.A-ANG	SND11	Piano Sonata
SND02	Emergency WA-U(Yelp)	SND12	Turkish March
SND03	Ambulance PI-PO(Hi-low)	SND13	Magic Flute
SND04	Abandon Alarm	SND14	Badinerie
SND05	Machinery Fault	SND15	Pine Apple Rag
SND06	High Expansion	SND16	Beep Intermittent
SND07	7 Short Pl. / 1 Long	SND17	Door Chime
SND08	Sweet Home	SND18	Phone Ring
SND09	For Elise	SND19	PI.PI.PI Short
SND10	Cuckoo's Waltz	SND20	Tripping Beat

• Standard sound combination for WS/ WP type products

ON = 1 / OFF = 0

7 sounds per combination can be selected according to your preference.
8 combinations are available.

No.	1	2	3	Ch1	Ch2	Ch3	Ch4	Ch5
1	1	0	0	SND01 Fire.A-ANG	SND02 Emergency WA-U	SND03 Ambulance PI-PO	SND05 Machinery Fault	SND06 High Expansion
2	0	1	0	SND01 Fire.A-ANG	SND04 Abandon Alarm	SND05 Machinery Fault	SND06 High Expansion	SND07 7 Short Pl. / 1 Long
3	1	1	0	SND01 Fire.A-ANG	SND02 Emergency WA-U	SND04 Abandon Alarm	SND05 Machinery Fault	SND06 High Expansion
4	0	0	1	SND01 Fire.A-ANG	SND03 Ambulance PI-PO	SND05 Machinery Fault	SND06 High Expansion	SND07 7 Short Pl. / 1 Long
5	1	0	1	SND02 Emergency WA-U	SND03 Ambulance PI-PO	SND04 Abandon Alarm	SND05 Machinery Fault	SND06 High Expansion
6	0	1	1	SND01 Fire.A-ANG	SND02 Emergency WA-U	SND03 Ambulance PI-PO	SND04 Abandon Alarm	SND07 7 Short Pl. / 1 Long
7	1	1	1	SND01 Fire.A-ANG	SND03 Ambulance PI-PO	SND04 Abandon Alarm	SND06 High Expansion	SND07 7 Short Pl. / 1 Long
8	0	0	0	SND02 Emergency WA-U	SND03 Ambulance PI-PO	SND04 Abandon Alarm	SND05 Machinery Fault	SND07 7 Short Pl. / 1 Long

※ You can select sound tones using the 3P switches located on the circuit board of the WS Type and WP Type products.

• Standard sound combination for WM/ WA type products

ON = 1 / OFF = 0

13 sounds per combination can be selected according to your preference.
8 combinations are available.

No.	1	2	3	Ch1	Ch2	Ch3	Ch4	Ch5
1	1	0	0	SND08 Sweet Home	SND09 For Elise	SND10 Cuckoo's Waltz	SND11 Piano Sonata	SND12 Turkish March
2	0	1	0	SND16 Beep Intermittent	SND17 Door Chime	SND18 Phone Ring	SND19 PI.PI.PI Short	SND20 Tripping Beat
3	1	1	0	SND08 Sweet Home	SND11 Piano Sonata	SND13 Magic Flute	SND17 Door Chime	SND19 PI.PI.PI Short
4	0	0	1	SND13 Magic Flute	SND14 Badinerie	SND15 Pine Apple Rag	SND08 Sweet Home	SND09 For Elise
5	1	0	1	SND10 Cuckoo's Waltz	SND11 Piano Sonata	SND17 Door Chime	SND18 Phone Ring	SND20 Tripping Beat
6	0	1	1	SND08 Sweet Home	SND12 Turkish March	SND16 Beep Intermittent	SND17 Door Chime	SND18 Phone Ring
7	1	1	1	SND08 Sweet Home	SND11 Piano Sonata	SND12 Turkish March	SND17 Door Chime	SND19 PI.PI.PI Short
8	0	0	0	SND11 Piano Sonata	SND12 Turkish March	SND13 Magic Flute	SND16 Beep Intermittent	SND18 Phone Ring

※ You can select sound tones using the 3P switches located on the circuit board of the WM Type and WA Type products.

Pre-recorded Sound Tone and Sound Combination Chart

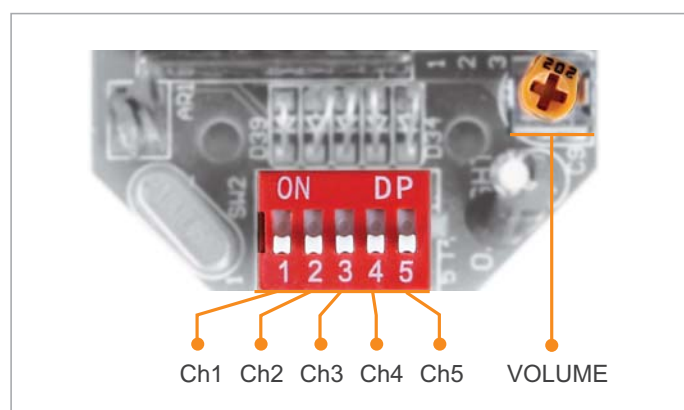
■ Sound tone combinations for standard type products

For standard type products, user can select from a variety of 5 pre-recorded sound combinations including 5 warning sounds, 5 special warning sounds, 5 melodies, 5 alarms, and 5 customizable sound.

	Sound Category	Channel	Sound Tone	Sound Combination #
WS	5 warning sounds	Ch1 Ch2 Ch3 Ch4 Ch5	Fire.A-ANG Emergency WA-U(Yelp) Ambulance PI-PO(Hi-low) Machinery Fault High Expansion	WS/ WP No.1
WP	5 special warning sounds	Ch1 Ch2 Ch3 Ch4 Ch5	Fire.A-ANG Abandon Alarm Machinery Fault High Expansion 7 Short Pl. / 1 Long	WS/ WP No.2
WM	5 melodies	Ch1 Ch2 Ch3 Ch4 Ch5	Sweet Home For Elise Cuckoo's Waltz Piano Sonata Turkish March	WM/ WA No.1
WA	5 alarms	Ch1 Ch2 Ch3 Ch4 Ch5	Beep Intermittent Door Chime Phone Ring PI.PI.PI Short Tripping Beat	WM/ WA No.2
WV	5 customizable sound	Ch1 Ch2 Ch3 Ch4 Ch5	<ol style="list-style-type: none"> Voice messages are pre-recorded and provided from factory upon user's request Each channel has recording space for 16 sec 5 channels available When only one channel is used, maximum recordable space is 80 sec 	-

※ Please refer to page 90 for detailed information about selectable sound patterns.

■ Sound Selection of Signal Sounds



Standard specification : Use internal switches

Turn on dip switches of each channel, designated sound will be played.

Special Alarm Type Feature

■ How to set-up the special alarm type products

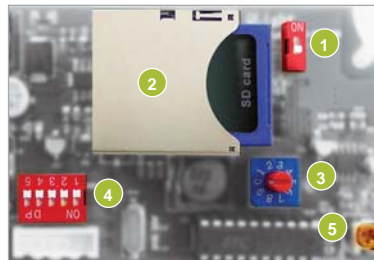
- A special alarm type products are classified into two models; basic model with special alarm and SDcard (MP3) model.
- The 2 models have 31 built-in sounds, which can be chosen and played by binary input method.
- When storing MP3 files on the SDcard (MP3) type models, you can select and play up to 31 sounds by using the binary input method. The bit input method can play 5 sound from #1 to #5, depending on the specifications given in the file name(For file specifications refer to Page 96.)
- Includes eight play mode settings. For example, when the continuous playback setting/ function is selected the warning message is played continuously for conditions that require frequent playback.

■ Built-in sound type model



- 1 - 2 N/A
- 4 Sound select switch
- 5 Volume

■ SDcard type model



- 1 Sound setting switch
- 2 MP3 playable SDcard
- 3 Play mode setting switch
- 4 Sound select switch
- 5 Volume

※ Built-in sound type model can select and play 31 sounds by using the sound selection switch.

■ SDcard(MP3) type product feature

1 SOUND setting switch

- If the switch is ON the SDcard (MP3) will be played, and if the switch is OFF the built-in sounds will be played.

2 SDcards

- The SDcard is a compact flash memory card for storing MP3 files.
- After saving the MP3 files in the SDcard with the specified format, insert the card into the SDcard slot and switch the sound setting switch to ON so the sounds can be played from the SDcard.

3 PLAY MODE setting switch

- PLAY MODE setting switch is used to choose the channel input method or select various playing modes. Refer to the table below for switch features.
- Switch #0 and #9 is not used.

1	Bit Input Mode	5 sounds can be played from the selected group (choose one group from six groups) Play sound only once (if using sequential signal input or pulse signal input)
2	Binary Input Mode	Up to 31 sounds available for each model. Plays sound only once (sequential signal input only)
3	Bit Input Hold Playback Mode	5 sounds can be played from the selected group (choose one group from six groups) The sound is repeated if the input signal is maintained. (sequential signal input only) If the STOP signal is inputted, the sound is turned off, and if the STOP signal is disabled the sound is played repeatedly
4	Binary Input Hold Playback Mode	Up to 31 sounds available for each model The sound is repeated if the input signal is maintained. (sequential signal input only) If the STOP signal is inputted, the sound is turned off, and if the STOP signal is disabled the sound is played repeatedly
5	Bit Input Sound Reduction Mode	5 sounds can be played from the selected group (choose one group from six groups) You can reduce the volume(15dB) by using a separate volume reduction signal line (same as volume reduction signal input)
6	Binary Input Sound Reduction Mode	Up to 31 sounds available for each model You can reduce the volume(15dB) by using a separate volume reduction signal line (same as volume reduction signal input)
7	Bit Input Sequence Memory Playback Mode	5 sounds can be played from the selected group (choose one group from six groups) If the sound is inputted in a order, it will remember the order and play each sound about 3 seconds. The last input channel is fully played (bit input mode only)
8	Test Mode	In test mode, Ch1 of group is automatically played back repeatedly. To end the test mode, switch back to the other modes.

4 Channel selection switch

- By using 5 channel selection switches, one can choose the appropriate sound source depending on the Binary input and Bit input.

5 VOLUME

- You can adjust the speakers sound output by using the volume dial.

Sound Pattern and Combination for Special Alarm Type

■ Sound pattern for special alarm type

- Special alarm type product has 31 pre-recorded sound tones.
- Supports binary input mode. 5ch switch allows for 31 sound tones.

• Composition of binary input mode

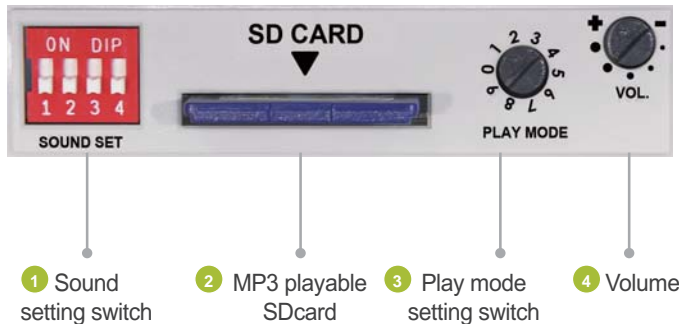
ON = 1 / OFF = 0						Left channel switch allows for choosing 31 sound tones. Channel switch will be substituted for an external wiring in case of LC type products.	Sound tone	Frequency
ON	Ch1	Ch2	Ch3	Ch4	Ch5			
OFF	□	□	□	□	□			
No.	1	2	3	4	5			
0	0	0	0	0	0	No sound		
1	0	0	0	0	1	Rel rel rel		730Hz-920Hz
2	0	0	0	1	0	Slow Ambulance PI-PO		820Hz-1.05kHz
3	0	0	0	1	1	Oit Oit warning sound		360Hz-1.56kHz
4	0	0	1	0	0	Emergency WA-U(Yelp)		770Hz-1.2kHz
5	0	0	1	0	1	Pi- buzzer		770Hz
6	0	0	1	1	0	7 Short PI. / 1 Long		715Hz
7	0	0	1	1	1	Pi o Pi o		940Hz-2.19kHz
8	0	1	0	0	0	Phone Ring		740Hz-910Hz
9	0	1	0	0	1	Pi- buzzer		600Hz
10	0	1	0	1	0	Pi pi pi short		420Hz
11	0	1	0	1	1	Di o Di o 2 tones buzzer		600Hz-1.14kHz
12	0	1	1	0	0	Oit Oit warning sound		500Hz-1.11kHz
13	0	1	1	0	1	Slow Ambulance PI-PO		380Hz-470Hz
14	0	1	1	1	0	Slow Di o Di o		680Hz-840Hz
15	0	1	1	1	1	Fast Li o li o		380Hz-470Hz
16	1	0	0	0	0	Fire.A-ANG		770Hz-1.11kHz
17	1	0	0	0	1	Fast Ambulance PI-PO		680Hz-840Hz
18	1	0	0	1	0	Slow Ambulance PI-PO		650Hz-840Hz
19	1	0	0	1	1	Ri ro ri ro warning sound		420Hz-470Hz
20	1	0	1	0	0	Repeat Di-o 3 times		680Hz-840Hz
21	1	0	1	0	1	Fire.A-ANG		500Hz-1kHz
22	1	0	1	1	0	Ambulance PI-PO		680Hz-840Hz
23	1	0	1	1	1	Slow Fire.A-ANG		480Hz-1.14kHz
24	1	1	0	0	0	Pi-pi- buzzer low frequency		690Hz
25	1	1	0	0	1	Pi-pi- buzzer high frequency		950Hz
26	1	1	0	1	0	Di-di- buzzer high frequency		800Hz
27	1	1	0	1	1	Di-di- buzzer low frequency		500Hz
28	1	1	1	0	0	Rising Po-ong		500Hz-1.2kHz
29	1	1	1	0	1	Fast Ambulance PI-PO		825Hz-1.07kHz
30	1	1	1	1	0	Rising frequency		150Hz-1kHz
31	1	1	1	1	1	Repeat A-ANG		1.4kHz-1.56kHz

Multifunctional Type Feature

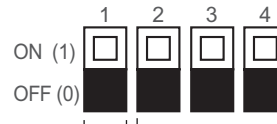
■ How to set up the multifunctional products(MP3)

- Multifunctional type products can play MP3 sounds by using an SDcard and can also play WS (5 Warning sounds), WP (5 special warning sounds 1st Group), WM (5 Melodies), WA (5 Alarms), WO (5 special warning sounds 2nd Group), and WN (5 special warning sounds 3rd Group) when not using a SDcard.
- Includes seven different functions. For example, it is able to playback the message continuously with the continuous playback function for warning message that needs to be repeated often.

■ Function setting



1 Sound setting switch



Group Choice in Bit Input Mode

- 001 : WS (5 Warning sounds)
- 010 : WP (5 special warning sounds 1st Group)
- 011 : WM (5 Melodies)
- 100 : WA (5 Alarms)
- 101 : WO (5 special warning sounds 2nd Group)
- 110 : WN (5 special warning sounds 3rd Group)

Sound Selection

- 0 : Built-in sound
- 1 : SDcard(MP3)

- #1 switch from the sound setting switch is for selecting Built-in sound/ SDcard
- #2 – #4 switch is for selecting a group of sound incase you have selected bit input mode

2 SDcards

- The SDcard is a compact flash memory card for storing MP3 files.
- After saving the MP3 files in the SDcard with the specified format, insert the card into the SDcard slot and switch the sound setting switch to ON so the product will be able to play sounds from the SDcard.

3 PLAY MODE setting switch

- PLAY MODE setting switch is used to choose the channel input method or select various play modes. Refer to the table below for switch features.
- Switch #0 and #9 is not used.

1	Bit Input Mode	5 sounds can be played from the selected group (choose one group from six groups) Play sound only once (if using sequential signal input or pulse signal input)
2	Binary Input Mode	Up to 30 sounds available for each model. Plays sound only once (sequential signal input only)
3	Bit Input Hold Playback Mode	5 sounds can be played from the selected group (choose one group from six groups) The sound is repeated if the input signal is maintained. (sequential signal input only) If the STOP signal is inputted, the sound is turned off, and if the STOP signal is disabled the sound is played repeatedly
4	Binary Input Hold Playback Mode	Up to 30 sounds available for each model The sound is repeated if the input signal is maintained. (sequential signal input only) If the STOP signal is inputted, the sound is turned off, and if the STOP signal is disabled the sound is played repeatedly
5	Bit Input Sound Reduction Mode	5 sounds can be played from the selected group (choose one group from six groups) You can reduce the volume(15dB) by using a separate volume reduction signal line (same as volume reduction signal input)
6	Binary Input Sound Reduction Mode	Up to 30 sounds available for each model You can reduce the volume(15dB) by using a separate volume reduction signal line (same as volume reduction signal input)
7	Bit Input Sequence Memory Playback Mode	5 sounds can be played from the selected group (choose one group from six groups) If the sound is inputted in a order, it will remember the order and play each sound about 3 seconds . The last input channel is fully played (bit input mode only)
8	Test Mode	In test mode, Ch1 of group is automatically played back repeatedly. To end the test mode, switch back to the other modes.

4 VOLUME

- You can adjust the speakers sound output by using the volume dial.

Sound Pattern and Combination for Multifunctional Product

■ Sound patterns for multifunctional products

- Multifunctional product has 30 pre-recorded sound tones.
- 30 sound tones in binary input mode supported. Bit input mode has 5 sound tones within 1 group among 6 groups.

• Bit input mode's sound tone combinations

		ON = 1 / OFF = 0														
		Ch1	Ch2	Ch3	Ch4	Ch5	Left channel switch allows to select 5 tons individually within designated group. (For group selection, please refer to page 94 "How to set-up the multifunctional products") Channel switch will be substituted for external wiring in case of LC type products.									
ON		<input type="checkbox"/>	<input type="checkbox"/>	<input type="checkbox"/>	<input type="checkbox"/>	<input type="checkbox"/>										
OFF		<input type="checkbox"/>	<input type="checkbox"/>	<input type="checkbox"/>	<input type="checkbox"/>	<input type="checkbox"/>										
Sound	Ch	Sound Tone					Sound	Ch	Sound Tone							
WS	5 Warning Sounds	Ch1	Fire.A-ANG(560Hz-1.5kHz)					WA	5 Alarms	Ch1	Beep Intermittent					
		Ch2	Emergency WA-U(Yelp)(600Hz-1.5kHz)							Ch2	Door Chime					
		Ch3	Ambulance PI-PO(Hi-low)(450Hz-900Hz)							Ch3	Phone Ring					
		Ch4	Machinery Fault(820Hz)							Ch4	PI.PI.PI Short					
		Ch5	High Expansion(1kHz)							Ch5	Tripping Beat					
WP	5 Special Warning Sounds (1 st Group)	Ch1	Fire.A-ANG(560Hz-1.5kHz)					WO	5 Special Warning Sounds (2 nd Group)	Ch1	Rel rel rel(730Hz-920Hz)					
		Ch2	Abandon Alarm(820Hz)							Ch2	Slow Ambulance PI-PO(820Hz-1.05kHz)					
		Ch3	Machinery Fault(820Hz)							Ch3	Wye yong Wye yong(770Hz-1.2kHz)					
		Ch4	High Expansion(1kHz)							Ch4	Phone ring 2(740Hz-910Hz)					
		Ch5	7 Short Pl. / 1 Long(1kHz)							Ch5	Fire.A-ANG(770Hz-1.11kHz)					
WM	5 Melodies	Ch1	Sweet Home					WN	5 Special Warning Sounds (3 rd Group)	Ch1	Oit Oit(500Hz-1.11kHz)					
		Ch2	For Elise							Ch2	Pi o Pi o(940Hz-2.19kHz)					
		Ch3	Cuckoo's Waltz							Ch3	Slow Di o Di o(680Hz-840Hz)					
		Ch4	Piano Sonata							Ch4	Li long Li ling(420Hz-470Hz)					
		Ch5	Turkish March							Ch5	911 Siren(500Hz-1kHz)					

• Binary input mode's sound tone combinations

		ON = 1 / OFF = 0														
		Ch1	Ch2	Ch3	Ch4	Ch5	Left channel switch allows the user to select from 30 available sound tones. Channel switch will be substituted for external wiring in case of LC type products.									
ON		<input type="checkbox"/>	<input type="checkbox"/>	<input type="checkbox"/>	<input type="checkbox"/>	<input type="checkbox"/>										
OFF		<input type="checkbox"/>	<input type="checkbox"/>	<input type="checkbox"/>	<input type="checkbox"/>	<input type="checkbox"/>										
No.	1	2	3	4	5	Sound tone	Frequency									
0	0	0	0	0	0	No sound										
1	0	0	0	0	1	Fire.A-ANG	560Hz-1.5kHz									
2	0	0	0	1	0	Emergency WA-U(Yelp)	600Hz-1.5kHz									
3	0	0	0	1	1	Ambulance PI-PO(Hi-low)	450Hz-900Hz									
4	0	0	1	0	0	Pi-ik Pi-ik	820Hz									
5	0	0	1	0	1	Machinery Fault	820Hz									
6	0	0	1	1	0	High Expansion	1kHz									
7	0	0	1	1	1	Alarm	1kHz									
8	0	1	0	0	0	Sweet Home	-									
9	0	1	0	0	1	For Elise	-									
10	0	1	0	1	0	Cuckoo's Waltz	-									
11	0	1	0	1	1	Piano Sonata	-									
12	0	1	1	0	0	Turkish March	-									
13	0	1	1	0	1	Magic Flute	-									
14	0	1	1	1	0	Badinerie	-									
15	0	1	1	1	1	Pineapple Rag	-									
16	1	0	0	0	0	Beep Intermittent	-									
17	1	0	0	0	1	Door Chime	-									
18	1	0	0	1	0	Phone Ring	-									
19	1	0	0	1	1	PI.PI.PI Short	-									
20	1	0	1	0	0	Tripping Beat	-									
21	1	0	1	0	1	Rel rel rel	730Hz-920Hz									
22	1	0	1	1	0	Slow Ambulance PI-PO	820Hz-1.05kHz									
23	1	0	1	1	1	Wye yong Wye yong	770Hz-1.2kHz									
24	1	1	0	0	0	Phone ring 2	740Hz-910Hz									
25	1	1	0	0	1	Fire.A-ANG	770Hz-1.11kHz									
26	1	1	0	1	0	Oit Oit	500Hz-1.11kHz									
27	1	1	0	1	1	Pi o Pi o	940Hz-2.19kHz									
28	1	1	1	0	0	Slow Di o Di o	680Hz-840Hz									
29	1	1	1	0	1	Li long Li ling	420Hz-470Hz									
30	1	1	1	1	0	911 Siren	150Hz-1kHz									

How to Use a MP3 Type Product

MP3-type models have 30 or 31 built-in alarm sounds and the users can play their voice messages or music files(MP3). You can choose two methods for playing up to 31 sounds with the binary input method. While the bit input method can only play 5 sounds from #1 to #5.

■ What is a MP3?

- MP3 is a audio compression technology(Audio layer-3) design by MPEG (Motion Picture Experts Group)
MP3 (MPEG-1 Audio Layer-3) is a standard technology and format for compressing a sound sequence into a very small file while preserving the original level of sound quality when it is played.
- Extension of the MP3 file can be found as “*.mp3”, and any voice message, alarm message, and music can be played and saved as MP3 files.

■ What is a SDcard?



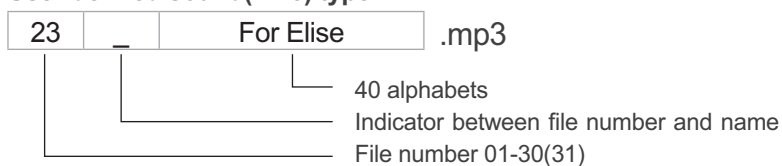
SD memory card is a compact flash memory card for storing various data such as MP3s or document files, Models with MP3 features can save voice messages or alarm messages in the SDcard.

※ SDcard sold separately.

Saving a MP3 file

- MP3 file can be saved and played in accordance with the standards specified by filename.
- Using binary input method according to the specifications given in the file name, a SDcard which is used in special alarm type models(MP3) can save up to 31 sounds, multifunctional type models can save and play up to 30 sounds.
- Using bit input method according to the specifications given in the file name, you can select and play up to five sounds from the MP3 file.

User-defined sound(MP3) type



- [Example]
- 01_Fire alarm.mp3
 - 02_Emergency alarm.mp3
 - 03_For Elise.mp3
 - ⋮
 - 30_Cuckoo Waltz.mp3

Binary input and Bit input method

Special alarm type models and multifunctional type models are divided into Binary input method or Bit input method depending on the source selection method.

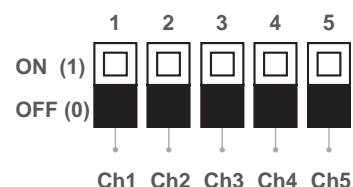
■ Binary input

ON = 1 / OFF = 0

	1	2	3	4	5
ON	<input type="checkbox"/>	<input type="checkbox"/>	<input type="checkbox"/>	<input type="checkbox"/>	<input type="checkbox"/>
OFF	<input type="checkbox"/>	<input type="checkbox"/>	<input type="checkbox"/>	<input type="checkbox"/>	<input type="checkbox"/>
No.	1	2	3	4	5
0	0	0	0	0	0
1	0	0	0	0	1
2	0	0	0	1	0
⋮	⋮	⋮	⋮	⋮	⋮
31	1	1	1	1	1

You can only show 2 numbers with 1 switch “0”, “1”. With 5 switches you can have 31 combinations. Selecting one sound from 5 switches is the Binary input method.

■ Bit input



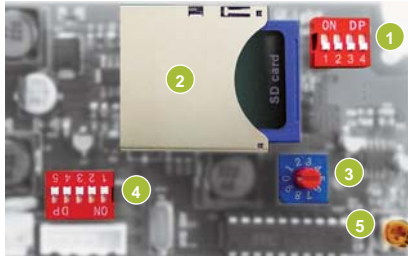
The Bit input method only recognizes one of the 5 switches at a time. This method doesn't support two inputs at once. The number of combinations is small, but it is much more convenient to remember the channel number.

How to Use a MP3 Type Product

■ MP3 supported model basic description

- MP3 supported products can play 30-31 built-in sounds or MP3 files saved in an SDcard.
- Binary input method can play up to 30 - 31 sounds, and Bit input method can play 5 sounds in accordance with the standards specified by filename.
- Can choose and play 5 sounds from #1 to #5.

<Switch select type>

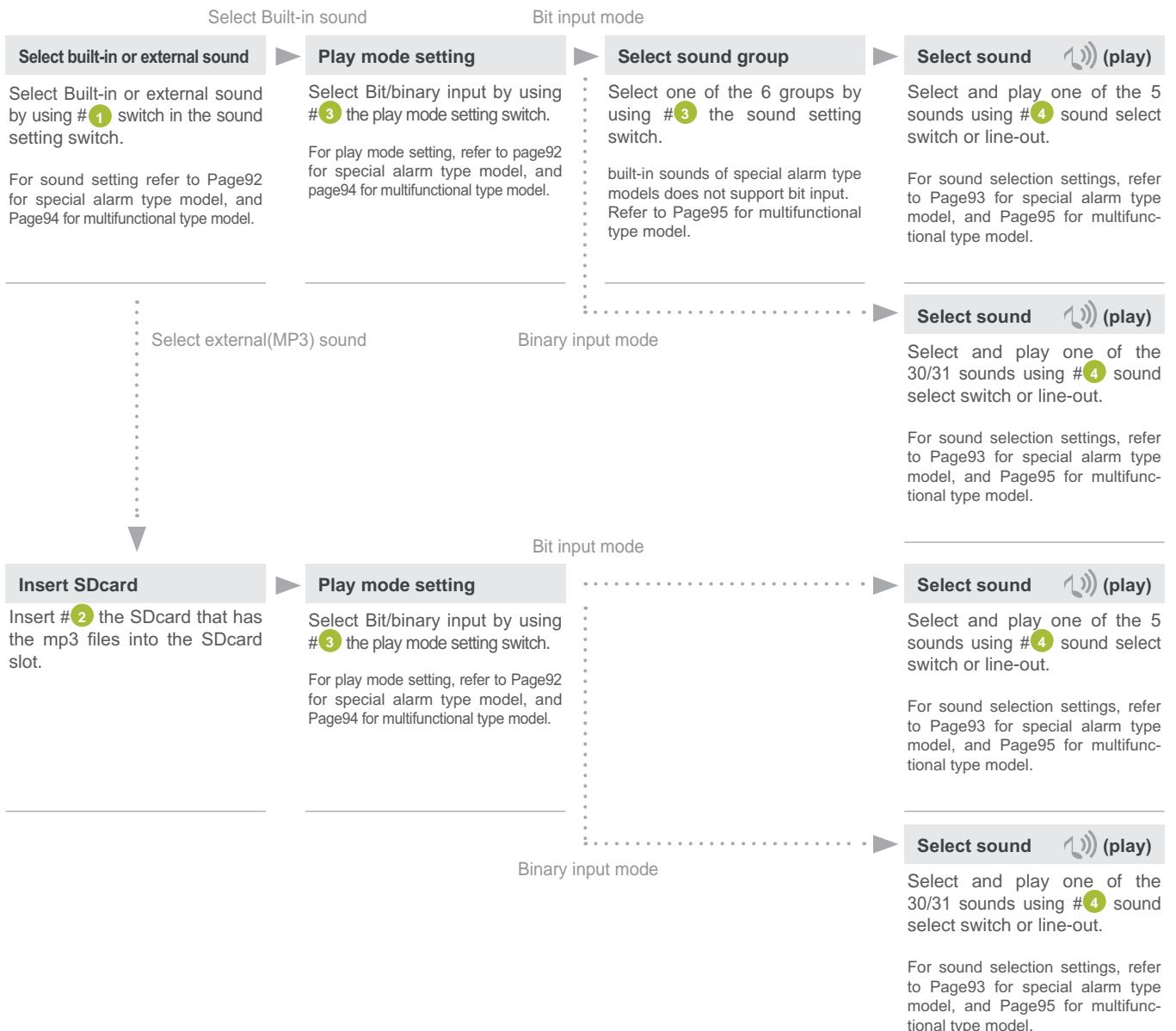


<Line-out type>



- 1 Sound setting switch
- 2 MP3 playable SDcard
- 3 Play mode setting switch
- 4 Sound select switch
- 5 Volume

■ How to set-up a MP3 type product



Icon Description

This catalogue helps users quickly identify the product's specifications and features by using several types of icons. If you understand the concept for each icon, you will find it easy to understand the catalogue information.

Light Source and Operating Mode Icons

Icon	Operating Mode	Icon	Operating Mode
	Bulb steady type		Bulb steady/flashing type
	Bulb revolving type		LED revolving type
	LED steady type		LED steady/ flashing type
	LED simulated revolving type		LED strobe type
	Xenon lamp strobe type		

Acoustic Signal Icons

Icon	Operating Mode	Icon	Operating Mode
	Buzzer		Speaker
	Horn		Bell
	Motor siren		MP3
	Decibel		

Specifications Icons

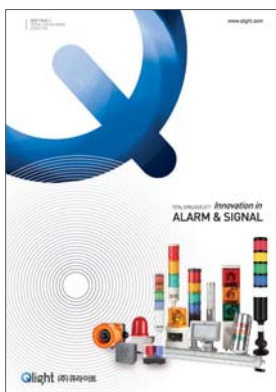
Icon	Operating Mode	Icon	Operating Mode
	Magnet type		Ambient operating temperature
	NPN type transistor		PNP type transistor
	IP rating		Wireless Network

Detail Icons

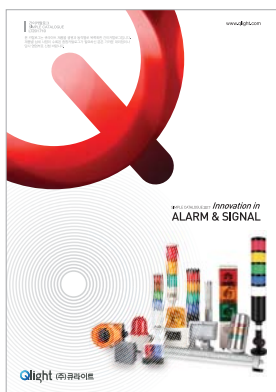
Icon	Operating Mode	Icon	Operating Mode
	Common specification		External view drawing
	Wiring		Mounting
	User specifications		Model selection

Qlight Catalogue Introduction

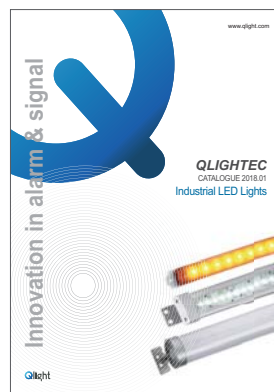
Qlight produces a wide variety of product categories which offers the customer the ability to select the suitable device for their application needs and environments. There are warning/signal lights, electric signal horns, signal tower lights, warning light bars, PC control tower lights, industrial LED lights, aviation obstruction lights, and limit switches.



Total Catalogue



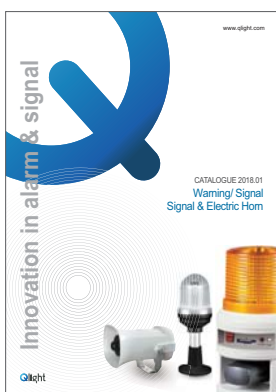
Simple Catalogue



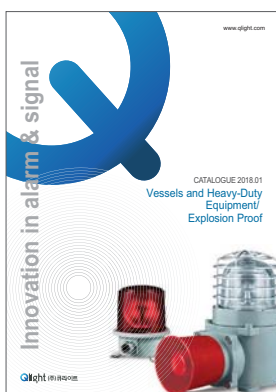
Industrial LED Lights



Signal Tower Lights



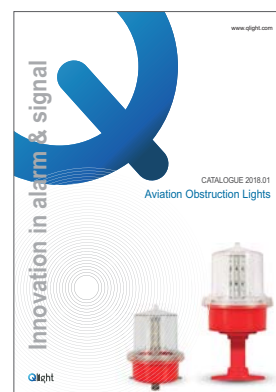
Warning/ Signal/ Signal & Electric Horn



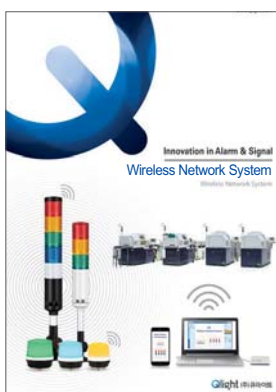
Vessels and Heavy-Duty Equipment/ Explosion Proof



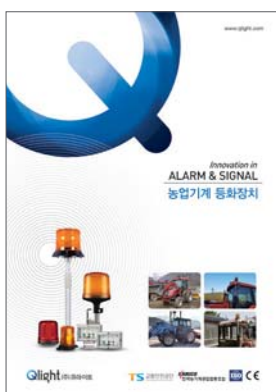
Warning Light Bar



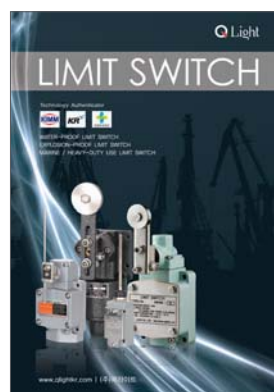
Aviation Obstruction Lights



Wireless Network System



Agriculture Machine Warning Light



Limit Switch



For Steel Manufacturing Facilities



FOR YOUR
SAFETY

Specification and dimensions listed in this catalogue are subject to change without prior notice for product quality improvement. The newest product information is available on our web site. (www.qlight.com) Please read the Instruction Manual attached to the product carefully before installation and use.

Qlight Catalogue Introduction

Signal Tower Lights

Warning/ Signal & Electric Horn

Vessels and Heavy-Duty & Equipment/ Explosion Proof

Warning Light Bar

Aviation Obstruction Lights

Industrial LED Lights

Qlight Co., Ltd. www.qlight.com | qlightkr@qlight.com

Head Office | A-412, 579, Gyeongin-ro, Guro-gu, Seoul, Korea Tel. +82-80-328-2222 Fax : +82-2-2679-6154

Factory | 185-25, Mukbang-Ro, Sangdong-Myeon, Gimhae-si, Gyeongsangnamdo, Korea Tel. +82-80-328-1111

Qlight Public Relations & Marketing Team Office | Nakdong-daero, Sasang-gu, Busan, Korea(Eomgung-Dong) Tel : +82-51-245-0017

Qlight USA, Inc. www.qlight.com www.qlightusa.com | sales@qlightusa.com

3003 North First Street, Suite #341, San Jose, CA 95134 USA Tel. +1.408.519.5740 Fax. +1.408.519.5739

SHANGHAI Qlight Electronic Co., Ltd. www.qlight.com www.qlightcn.com | qlightcn@qlight.com

China Factory/ Shanghai Sales Office | #19, Nanda Road, Baoshan Area, Shanghai, China Tel. +86.21.6651.7100 Fax. +86.21.6315.3929

Qlight



WARNING LIGHT | ELECTRONIC HORN | SIGNAL TOWER LIGHT | EMERGENCY LIGHT BAR | LED OBSTRUCTION LIGHT | LED WORK LIGHT