

Innovation in alarm & signal

CATALOGUE 2018.02

Vessels and Heavy-Duty &  
Equipment/  
Explosion Proof



# Company Introduction



## Qlight Gives You a Brighter Future!

Qlight has been a world-leading provider of visual and audible status indicating systems and solutions for the last three decades. We pride ourselves in developing products which help our customer's improve productivity, safety, and quality control in the industrial automation and commercial industries. Our strong dedication to innovative products, quality assurance, well-established supply chain, customizable manufacturing and strong customer relationships have helped us earn the top market share in Korea and China. These core values have also been fundamental to our continued growth into new markets. Qlight's products are certified by the International Quality Management System (ISO14001), IECEX, ATEX, UL, NEPSI, CE, Lloyd, KIMM, and KOSHA which display our dedication to strin-

gent quality control and product development based on safety-pursuing industry standards.

Our assembly lines in Busan, South Korea and Shanghai, China presently provide a variety of more than 450 of products to more than 40 countries, based on sales offices in South Korea (Seoul, Busan) China (Shanghai, Shenzhen, Shenyang, Tianzhen, Tianjin, Wenzhou), and the U.S. (Silicon Valley). The Qlight brand reflects 30 years of research and development, certification, and manufacturing experience.

We will continue to establish ourselves as an industry-leading provider by pushing the boundaries of technology in order to enhance our customer's efficiency and safety in every industry and region of the world.



## Qlight Global Networks

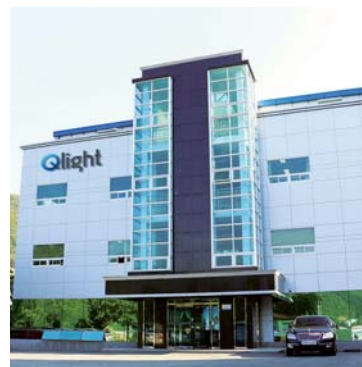
Country	Company name	Address	Phone
Korea	Qlight Co., Ltd.	HQ   A-412, 579, Gyeongin-ro, Guro-gu, Seoul, Korea	+82-80-328-2222
		Factory   185-25, Mukbang-Ro, Sangdong-Myeon, Gimhae-si, Gyeongsangnamdo, Korea	+82-80-328-1111
USA	Qlight USA, Inc.	#341, 3003 North First St., San Jose, CA 95134 USA	+1-408-519-5740
China	SHANGHAI Qlight Electronics Co.,Ltd	#19, Nanda Road, Baoshan Area, Shanghai, China	+86-21-6651-7100

## Qlight Clients Heavy industry / Ship building / Automotive / Steel / Machinery / Petrochemical / Power plants / Electronics / Semiconductor / Emergency Vehicles



# Company History

Qlight has been striving to accomplish our mission to provide visual and audible status indicating systems and solutions to enhance our customer's work safety and efficiency for the last three decades.

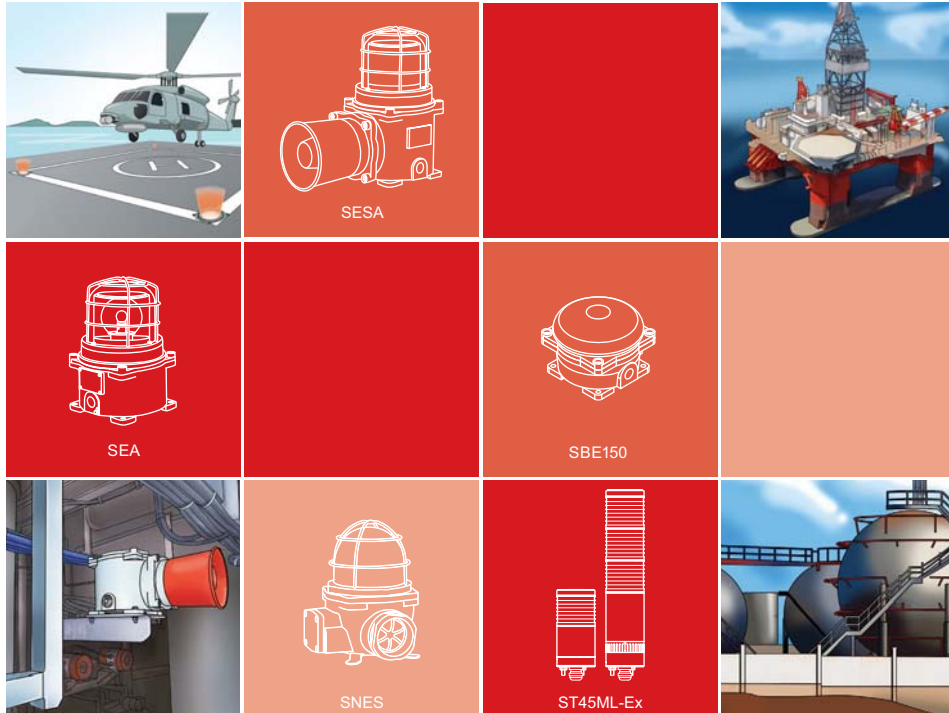


- 2017** 08 ISO 14001 : 2015 certificate aquired  
02 Obtained ICAO certification for SAOL1
- 2016** 11 Obtained the patent for "multi-functional modular signal tower light"  
(Patent # : 10-1676863)  
09 Obtained the patent for "Emergency Vehicle Lightbar" (Patent # : 10-1662283)  
07 Obtained UL certificate for LED signal lights Q series  
07 Obtained the patent for "Bar style LED work lights" (Patent # : 10-1598123)
- 2015** 09 The second headquarter factory built  
06 Limit switch models (3 items including SW2TS) aquired certificates from RMRS  
03 LED work lights (QML150/250, QMFL 500/600) UL listed
- 2014** 10 Established the Qlight USA, Inc. in San Jose, CA.  
Horn which that emits light patented (Patent # : 10-1452447)  
Fan/ tilt type bracket patented (Patent # : 10-1452445)  
09 LED strobe light with multi-lens patented (Patent # : 10-1444391)  
08 Explosion proof product family including SNE, SNES, SESA, SEA, SPNA aquired  
IECEX certificates  
06 Selected as a promising export company by Small & Medium Business Admin., Korea  
01 Non-sparking explosion proof tower lights including ST45ML and STB45ML  
aquired KGS and NEPSI certificates
- 2013** 01 Portable warning lights for agricultural machine applications patented  
(Patent # : 10-1226959)
- 2012** 12 Explosion proof warning lights (SNE, SNES) aquired CCS certificates  
LED work light with cylindrical lens attached patented (Patent # : 10-1219020)  
09 Explosion proof warning lights (SESA, SEA, SPNA) and heavy-duty warning lights  
(SH1, SED, SEWN30) certified by CCS  
01 LED warning light with LED reflector patented (Patent # : 10-1108102)
- 2011** 11 SNE, SNES certified by NEPSI, SNE, SNES, SESA, SEA, SPNA certified by KOSHA  
08 KCC (Korea Communications Commission) certificate aquired  
07 Light equipment applying prism system patented (Patent # : 10-1051056)
- 2010** 05 QEB certified by KIMM  
LED warning light, bulb revolving warning light patented (Patent # : 10-0961472)  
03 Research and development center established
- 2009** 12 SSEL certified by KIMM  
LED tower lights compliant with the RoHS directive
- 2008** 04 Motor drive system patented (Patent # : 20-0439536)  
03 LED revolving type lens patent aquired (patent # : 10-0808669)
- 2007** 11 Explosion proof electric horn (SPNA) aquired NEPSI certificates  
05 Tower light models including ST45, ST56, ST80) UL listed
- 2005** 07 Heavy-duty products for vessel applications aquired Lloyd's (UK's Maritime Clas-  
sification Society) certificates  
04 ABS certificates aquired for 18 products including SH1
- 2004** 06 ISO 9001:2000 certificates aquired
- 2001** 02 Established Shanghai Qlight Electronic Co.,Ltd. in China
- 2000** 07 Established Qlight Limited
- 1993** 11 Nominated for developing domestic explosion proof warning lights by Korean  
Ministry of Science & Technology
- 1988** 03 Developed limit switches for vessel applications
- 1986** 07 Established Qlight

CATALOGUE

# Explosion Proof Products

INNOVATION IN ALARM & SIGNAL



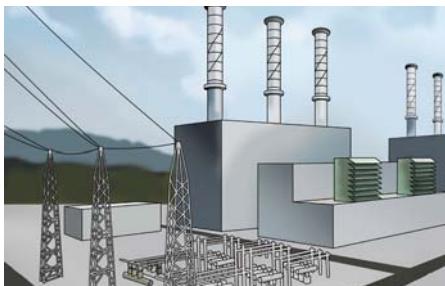
Product applications	.....	56
Technical data	.....	57
References	.....	62
Product introductions	.....	64

# Explosion Proof Product Applications



## Semiconductor Factory

Applied in a plumbing system for flammable materials used in the semiconductor manufacturing process



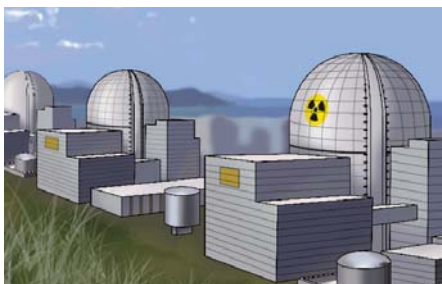
## Power Plant

Applied in hazardous areas with possibilities of explosion caused by coal dust in thermal power plants



## Petrochemical Plant

Applied in areas such as refineries where explosive materials are always present



## Nuclear Power Plant

Applied in areas where explosive materials are always present such as pipes and ducts of a generator cooling system



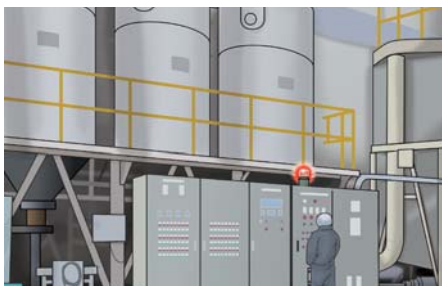
## Oil Tanker

Applied in areas where explosive materials are always present such as ships carrying oil and gas



## Electric Facilities

Applied in electrical equipment where flammable gas, vapor or dust exist



## Flour Factory

Applied in danger zones where there is a possibility of explosion caused by grain dust



## Off Shore Plant

Applied in mining equipment which produces or stores flammable materials such as oil and gas



## Coal Mine

Applied in areas where hazardous materials such as coal dust is always present



## Steel Industry

Applied in danger zones where hazardous materials such as gas is always present



## Gas Station

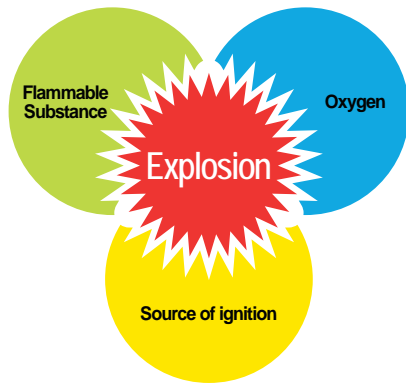
Applied in danger zones where flammable materials are stored



## Metal Processing Industry

Applied in danger zones where explosive metal, dust, and flammable gas are always present

# Explosion Proof Technical Data

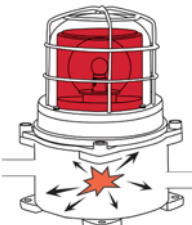
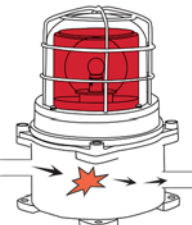


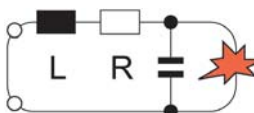
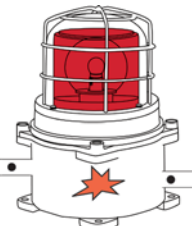


## Technical Data for Explosion Proof Products

- 3 elements of explosion**  
 Flammable substance, ignition source, and oxygen are the 3 elements of an explosion. The explosion will occur when the three components are met. If one of the three components does not exist the explosion will not occur.
- What is explosion proof?**  
 Preventing the combination of the 3 elements of explosion.
- Explosion proof product**  
 Typically, products will include electrical parts that can be an explosion ignition source. However, explosion proof products are designed to prevent spark/ ignition.

## Explosion Proof Structure Classifications

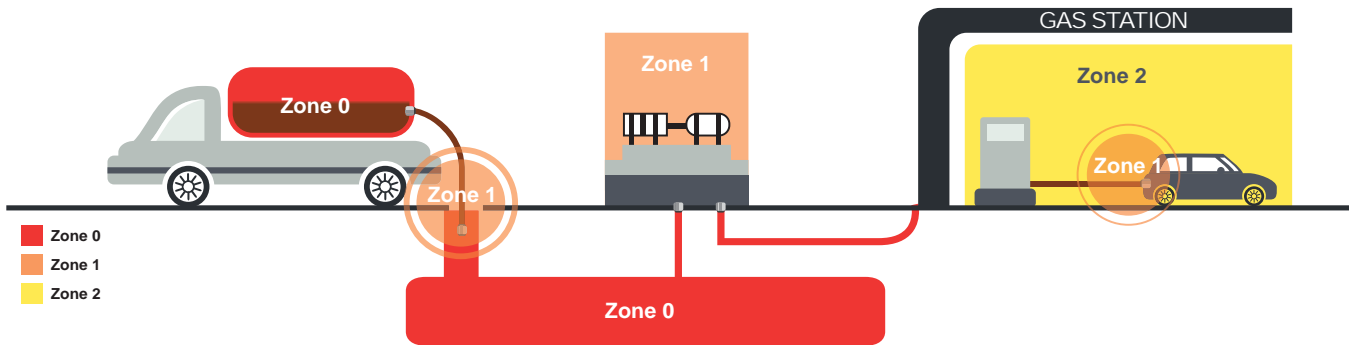
The data indicated below are some of the classification specifications by structure type of the explosion proof products. Furthermore, there are mold explosion proof structure, charging explosion proof structure and special explosion proof structure. The explosion proof classification structure is separated depending on product application areas.

<p><b>Flame Proof</b></p> 	<p>Ex d      Zone1, 2</p> <p>All electrical circuits are enclosed in a house strong enough to contain any explosion or fire that may take place on the inside.</p>	<p><b>Purged/ Pressurized</b></p> 	<p>Ex p      Zone1, 2</p> <p>Type of protection in which the protective inert gas inside the enclosure is maintained at a higher pressure than that of the surrounding atmosphere.</p>
<p><b>Increased Safety</b></p> 	<p>Ex e      Zone1, 2</p> <p>Electrical circuits incorporates special measures to reduce the probability of excessive temperatures and the occurrence of arcs and sparks in normal service.</p>	<p><b>Non-Sparking</b></p> 	<p>Ex n      Zone2</p> <p>Method of protection for electrical equipment designed so that it will not ignite the surrounding explosive atmosphere in normal operation and under certain fault conditions specified in the standard.</p>
<p><b>Intrinsic Safety</b></p> 	<p>Ex i      Zone 0, 1, 2</p> <p>The electrical energy available in circuits and equipment, is limited to a level to low to ignite the most easily ignitable mixtures in a hazardous area.</p>	<p><b>Dust Explosion Proof</b></p> 	<p>Ex td      Zone 21, 22</p> <p>The apparatus is enclosed in a manner that will exclude ignitable amounts of dusts and will not permit arcs, sparks or heat generated or liberated inside the enclosures to cause ignition of exterior dust accumulations on the enclosure or of atmospheric dust suspensions in the vicinity of the enclosure.</p>

# Technical Data of Explosion Proof

## Hazardous Area Classification

Zone 0	Where ignitable concentrations of flammable gases, vapors, or liquids are present continuously or for long periods of time under normal operating conditions.
Zone 1	Where ignitable concentrations of flammable gases, vapors, or liquids are likely to exist under normal operating conditions.
Zone 2	Where ignitable concentrations of flammable gases, vapors, or liquids can occur for only a short period of time.
Zone 20	Where explosive atmosphere in the form of a cloud of combustible dust in air is present continuously, or for long periods or frequently.
Zone 21	Where explosive atmosphere in the form of a cloud of combustible dust in air is likely to occur, occasionally, in normal operation.
Zone 22	Where explosive atmosphere in the form of a cloud of combustible dust in air is not likely to occur in normal operation but, if it does occur, will persist for a short period only.



<Areas classification example>

Condition	IEC	NEC500	JIS, KS
Continuous hazard (more than 1000 hours per year)	Zone 0 Zone 20(DUST)	Division 1	Zone 0
Intermittent hazard (10-1000 hours per year)	Zone 1 Zone 21(DUST)		Zone 1
Possible hazard (0.1-10 hours per year)	Zone 2 Zone 22(DUST)	Division 2	Zone 2

## Models Available for Each Zone

Area Classification	Model
Zone 1	SNE, SEA, SE, SSEL, SESA, SEBA, SNES, SPNA, QEB, SBE130, SBE150, QEAL1, QEAL2, QTEX, QTEXB
Zone 2	SNE, SEA, SE, SSEL, SESA, SEBA, SNES, SPNA, QEB, SBE130, SBE150, QEAL1, QEAL2, QTEX, QTEXB, ST45ML-Ex, STB45ML-Ex

# Technical Data of Explosion Proof

## Classification by Group

Explosion proof equipment is classified as below depending on the risk characteristic of explosive gas.

EXPLOSION GROUP FLAMMABLE	FLAMMABLE SUBSTANCE	FLAMMABILITY
I	Methane	
II A	Acetone, Petrol, Methanol, Propane, Toluene	Low
II B	Ethylene, City gas	High
II C	Hydrogen, Acetylene, Carbon sulphide	Very High

## Temperature Class Definition

The temperature class is defined as below depending on the surface temperature of the explosion proof equipment.

The range of Maximum surface temperature per temperature class	
The range of Maximum surface temperature	temperature class
300°C - 450°C	T1
200°C - 300°C	T2
135°C - 200°C	T3
100°C - 135°C	T4
85°C - 100°C	T5
Below 85°C	T6

## The Ignition Class and Temperature of The Explosive Gas

- 1) If the temperature class gets higher from T1 to T6, the ignition temperature gets lower.
- 2) If the explosion group changes from I to IIC, the explosion gets bigger.

	T1(G1)	T2(G2)	T3(G3)	T4(G4)	T5(G5)	T6(G6)
I	Methane					
II A	Acetone, Ethane Ethyl ethanoate Ammonia Benzol(Pure) Ethanoic acid Carbon oxide Methane, Methanol Propane, Toluene Acetic acid Ethyl acetate Ethyl chloride Carbon Monoxide Methylene Chloride Naphthalene, Phenol	Ethanol i-Amyl acetate n-Butane n-Butyl alcohol Ethyl alcohol Cyclohexane Acetic anhydride	Benzene Diesel fuel Aircraft fuel Heating oils n-Hexane Petroleum spirit - Gen Jet propulsion fuel Heating fuel DIN 51603	Acetaldehyde Ethyl ether		
II B	Town gas Coal gas (lighting gas)	Ethylene Ethylene oxide	Ethylene Ethylene oxide	Ethyl ether		
II C	Hydrogen	Ethine(Acetylene)				Carbon disulphide



# Technical Data of Explosion Proof

## Explosion Proof Marking

CE	2004		II	2	G	Ex d	II C	T6	Gb	IP66	- 40°C ≤ T <sub>amb</sub> ≤ +60°C
①	②	③	④	⑤	⑥	⑦	⑧	⑨	⑩	⑪	⑫

①	CE mark
②	Identification number of the notified body
③	Marking for equipment for use in explosive atmospheres.
④	I : Mines II : Surface industries
⑤	'1'=Zone 0, '2'=Zone 1, '3'=Zone 2
⑥	"M" = methane gas, 'G' = gas, 'D' = dust
⑦	Types of protection
⑧	Equipment groups
⑨	Temperature class
⑩	'Ga'=Zone 0, 'Gb'= Zone 1, 'Gc'=Zone 2
⑪	Protection rating(IP)
⑫	Ambient operating temperature

## Area Classification

International Classification of Zones.

AREA CLASSIFICATION				
		Continuous hazard	Intermittent hazard	Possible hazard
IEC/ CENELEC		Zone 0 Zone 20(DUST)	Zone 1 Zone 21(DUST)	Zone 2 Zone 22(DUST)
USA	NEC505	Zone 0	Zone 1	Zone 2
	NEC500 CLASS I (GAS) CLASS II (DUST) CLASS III (FIBERS)	DIVISION 1		DIVISION 2

# Technical Data of Explosion Proof

## The Temperature Classification

The temperature classification is based on the Maximum surface temperature of equipment.

The range of Maximum surface temperature per temperature class			
IEC/ EN/ NEC505		NEC500	
The range of Maximum surface temperature	Temperature class	The range of Maximum surface temperature	Temperature class
300°C - 450°C	T1	300°C - 450°C	T1
200°C - 300°C	T2	280°C - 300°C	T2
		260°C - 280°C	T2A
		230°C - 260°C	T2B
		215°C - 230°C	T2C
		200°C - 215°C	T2D
135°C - 200°C	T3	180°C - 200°C	T3
		165°C - 180°C	T3A
		160°C - 165°C	T3B
		135°C - 160°C	T3C
100°C - 135°C	T4	120°C - 135°C	T4
		100°C - 120°C	TA
85°C - 100°C	T5	85°C - 100°C	T5
Below 85°C	T6	Below 85°C	T6

## Classification by Group According to NEC500

Classification of flammable material according to NEC500.

CLASS/ GROUP		GAS
CLASS 1	GROUP A	Acetylene or Equal
	GROUP B	Hydrogen, Butadiene, Ethylene oxide, Propylene oxide, Acrolein
	GROUP C	Ethyl ether, Ethylene, Acetaldehyde, Allyl alcohol, N-Butylaldehyde, Carbon monoxide, Crontonaldehyde, Cyclopropane, Diethyl ether, Diethylamine, Epichlorohydrin, Ethylene, Ethylenimine, Hydrogen Sulfide, Morpholine, 2-Nitropropane tetrahydrofuran, Isoprene or Unsymmetrical dimethylhydrazine(UDMH)
	GROUP D	Acetic acid (glacial), Acetone, Acrylonitrile, Ammonia, Benzene, Butane, 1-Butanol (Butyl alcohol), 2-Butanol(Secondary butyl alcohol), N-Butyl acetate, Isobutyl Acetate, Di-Isobutylene, Ethane, Ethanol(Ethyl alcohol), Ethyl acetate, Ethyl acrylate(Inhibited), Ethylenediamine(Anhydrous), Ethylene dichloride, Gasoline, Heptanes, Hexanes, Isoprene, Isopropyl, Ether, Mesityl oxide, Methane(Natural gas), Methanol (Methyl alcohol), 3-Methyl-1-Butanol(ISOAmyl alcohol), Methyl ethyl ketone, Methyl, Isobutyl ketone, 2-Methyl-1-Propanol(Isobutyl alcohol), 2-Methyl-2-Propanol (Tertiary butyl alcohol), Petroleum naphtha, Pyridine, Octanes, Pentanes, 1-Pentanol(Army alcohol), Propane, 1-Propanol(Propyl alcohol), 2-Propanol (Isopropyl alcohol), Propylene, Styrene, Toluene, Vinyl acetate, Vinyl chloride or Xylenes
CLASS 2	GROUP E	Metal dusts, Aluminum, Magnesium
	GROUP F	Coal, Coke, Carbon black, Charcoal dust
	GROUP G	GROUP E or F, Including flour, Starch, Grain, Wood, Plastic, Chemicals

# Explosion Proof Type Specification List



Model number(series)	ST45ML-Ex	QTEX	SNE	SE	SEA	SSEL	
Voltage	AC/DC12V AC/DC24V	DC12V, DC24V AC110V, AC220V	DC12V, DC24V AC110V, AC220V	DC12V, DC24V AC110V, AC220V	DC12V, DC24V AC110V, AC220V	DC12V, DC24V AC110V, AC220V	
Diameter	Ø45	Ø144	Ø152(Cage)	Ø155(Cage)	Ø167(Cage)	154×154	
Dimension (mm)	Height	114-278	472(Self stand) 457(Wall mount)	226	267	287	100
	Depth	-	155(Wall mount)	183(Length)	189(Length)	172(Length)	172(Length)
	Materials	Lens-PC Housing-PC	Lens-Tempered glass Housing-Al	Lens-Tempered glass Housing-Al	Lens-Tempered glass Housing-Brass	Lens-Tempered glass Housing-Al	Lens-Tempered glass Housing-Al
Light source & Operation	Bulb Steady/Flashing						
	Bulb Revolving		•	•	•		
	LED Revolving						
	LED Steady/Flashing	•(Steady)	•	•	•	•(Steady)	
	LED Strobe			•	•		
LED Simulated revolving xenon Strobe			•	•	•		
Mounting structure	Self stand	Self stand, Wall mount	Self stand	Self stand	Self stand	Self stand	
Cable entry	-	3/4" NPT	1/2" NPT	1/2" NPT	1/2" NPT	1/2" NPT	
Protection rating	IP54	IP66	IP66	IP66	IP66	IP66	
Usage area	ZONE 2	ZONE 1, ZONE 2	ZONE 1, ZONE 2	ZONE 1, ZONE 2	ZONE 1, ZONE 2	ZONE 1, ZONE 2	
Certificates	NEPSI, KGS	IECEX	IECEX, ATEX, NEPSI, KIMM, KOSHA, CCS	KIMM, ABS	IECEX, ATEX, NEPSI, KIMM, KOSHA, ABS, CCS, KR	KIMM, ABS	
Explosion proof rating	Ex nR IIT4, Ex nR IIT6(Layer 3 Only)	Ex d IIC T6 Gb (IECEX)	Ex d IIC T6 Gb (IECEX)	Ex d IIC T6 (KIMM)	Ex d IIC T6 Gb (IECEX)	Ex d IIC T6 (KIMM)	
Customization	-	Explosion proof cable gland, 2 ways cable entry, Cable entry	Explosion proof cable gland, 2 ways cable entry, Cable entry : M20x1.5	Explosion proof cable gland, 2 ways cable entry, Cable entry : 3/4" NPT, M20x1.5	Explosion proof cable gland, 2 ways cable entry, Cable entry : 3/4" NPT, M20x1.5, M25x1.5	Explosion proof cable gland, 2 ways cable entry, Cable entry : 3/4" NPT, M20x1.5, M25x1.5	
Transistors	NPN/ PNP Type	PNP Type	-	-	-	-	
Page	P64	P66	P70-71	P74-75	P76-77	P81	



Model number(series)	STB45ML-Ex	QTEXB	SNES	SESA	SEBA	SPNA	
Voltage	AC/DC12V AC/DC24V	DC12V, DC24V AC110V, AC220V	DC12V, DC24V AC110V, AC220V	DC12V, DC24V AC110V, AC220V	DC12V, DC24V AC110V, AC220V	DC12V, DC24V AC110V, AC220V	
Diameter	Ø45	Ø144	Ø152(Cage)	Ø167(Cage)	Ø167(Cage)	Ø134(Horn)	
Dimension (mm)	Height	153-317	472(Self stand) 457(Wall mount)	226	333	333	158
	Depth	-	155(Wall mount)	183(Length)	327(Length)	240(Length)	327(Length)
	Materials	Lens-PC Housing-PC	Lens-Tempered glass Housing-Al	Lens-Tempered glass Housing-Al	Lens-Tempered glass Housing-Al	Lens-Tempered glass Housing-Al	Horn-SUS316L Housing-Al
Light source & Operation	Bulb Steady/Flashing						
	Bulb Revolving		•	•	•		
	LED Revolving						
	LED Steady/Flashing	•(Steady)	•	•	•	•	
	LED Strobe			•	•		
LED Simulated revolving xenon Strobe			•	•	•		
Sound Pattern / dB	1 tone Buzzer	Max 80dB at 1m	Max 80dB at 1m	Max 105dB at 1m			
	15 signal sounds				Max 118dB at 1m		
	Bell					Max 95dB at 1m	
	Voice signal				Max 113dB at 1m		
	30 signal sounds					Max 113dB at 1m	
31 signal sounds							
MP3							
Mounting structure	Self stand	Self stand, Wall mount	Self stand	Self stand	Self stand	Self stand	
Cable entry	-	3/4" NPT	1/2" NPT	1/2" NPT	1/2" NPT	1/2" NPT	
Protection rating	IP54	IP66	IP66	IP66	IP55	IP66	
Usage area	ZONE 2	ZONE 1, ZONE 2	ZONE 1, ZONE 2	ZONE 1, ZONE 2	ZONE 1, ZONE 2	ZONE 1, ZONE 2	
Certificate	NEPSI, KGS	IECEX	IECEX, ATEX, NEPSI, KIMM, KOSHA, CCS	IECEX, ATEX, NEPSI, KIMM, KOSHA, ABS, CCS, KR	KIMM, ABS, KR	IECEX, ATEX, NEPSI, KIMM, KOSHA, ABS, CCS, KR	
Explosion proof rating	Ex nR IIT4, Ex nR IIT6(Layer 3 Only)	Ex d IIC T6 Gb (IECEX)	Ex d IIC T6 Gb (IECEX)	Ex d IIC T6 Gb (IECEX)	Ex d IIC T6 (KIMM)	Ex d IIC T6 Gb (IECEX)	
Customization	-	Explosion proof cable gland, 2 ways cable entry, Cable entry	Explosion proof cable gland, 2 ways cable entry, Cable entry : M20x1.5, 7 tone Buzzer	Explosion proof cable gland, 2 ways cable entry, Cable entry : 3/4" NPT, M20x1.5, M25x1.5	Explosion proof cable gland, 2 ways cable entry, Cable entry : 3/4" NPT, M20x1.5, M25x1.5	Explosion proof cable gland, 2 ways cable entry, Cable entry : 3/4" NPT, M20x1.5, M25x1.5	
Transistors	NPN/ PNP Type	PNP Type	-	NPN Type	-	NPN Type	
Page	P65	P67	P72-73	P78-79	P80	P82	

# Explosion Proof Type Specification List



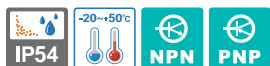
Model number(series)	QEAL1	QEAL2	SBE130	SBE150	
Voltage	DC12V, DC24V AC110V, AC220V	DC12V, DC24V AC110V, AC220V	DC24V AC110V, AC220V	DC24V AC110V, AC220V	
Diameter	Ø152(Cage)	Ø167(Cage)	Ø120(Bell)	Ø150(Bell)	
Dimension (mm)	Height	238	287	120	
	Depth	183(Length)	172(Length)	138(Length)	
	Materials	Lens-Tempered glass Housing-Al	Lens-Tempered glass Housing-Al	Bell-Al Housing-Al	Bell-Al Housing-Al
Light source & Operation	Bulb Steady/Flashing				
	Bulb Revolving				
	LED Revolving				
	LED Steady/Flashing	●(Steady)	●(Flashing)		
	LED Strobe				
Sound Pattern / dB	LED Simulated revolving xenon Strobe				
	1 tone Buzzer				
	15 signal sounds				
	Bell		Max. 95dB at 1m	Max. 95dB at 1m	
	Voice signal				
Mounting structure	30 signal sounds				
	31 signal sounds				
	MP3				
	Mounting structure	Self stand	Self stand	Self stand	Self stand
	Cable entry	1/2" NPT	1/2" NPT	1/2" NPT	1/2" NPT
Protection rating	IP66	IP66	IP56	IP56	
Usage area	ZONE 1, ZONE 2	ZONE 1, ZONE 2	ZONE 1, ZONE 2	ZONE 1, ZONE 2	
Certificate	KOSHA	KOSHA	KIMM	KIMM	
Explosion proof rating	Ex d IIC T4 (KOSHA)	Ex d IIC T4 (KOSHA)	Ex d IIC T6 (KIMM)	Ex d IIC T6 (KIMM)	
Customization	Explosion proof cable gland, 2 ways cable entry, M20x1.5	Explosion proof cable gland, 2 ways cable entry, Cable entry : ¼" NPT, M20x1.5, M25x1.5	Explosion proof cable gland, 2 ways cable entry, Cable entry : ¼" NPT, M20x1.5, M25x1.5	Explosion proof cable gland, 2 ways cable entry, Cable entry : ¼" NPT, M20x1.5, M25x1.5	
Transistors	-	-	-	-	
Page	P85	P86	P83	P83	



Model number(series)	QMFL-300-Ex-24	
Voltage	DC24V	
Power consumption	10W	
Dimension (mm)	Length	290
	Width	38
	Height	64
Materials	Lens-Tempered glass Housing-Al	
Lens color	Translucent	
Light color	Cool daylight	
Efficacy (lm/W)	260Lux	
Mounting structure	Mount bracket	
Protection rating	IP67/ IP69K	
Certificate	KC(KGS)	
Explosion proof rating	Ex nR II T6	
Customization		
Page	P84	

# ST45ML-Ex

## Non Sparking Explosion Proof LED Tower Lights



### ST45ML-Ex Standard Model

Non-sparking explosion proof LED tower lights suitable for use in zone 2 hazardous areas



ST45ML-Ex



Gas cabinets used in the semiconductor industry require constant supply of specialty gases and pressure to properly store the devices. Non-sparking explosion proof products (ST45ML-EX) must be used in these conditions.



### Common Specifications(ST45ML-Ex/ STB45ML-Ex)

- Non-sparking explosion protected high-intensity LED steady tower lights
- Excellent distance visibility by using a special reflector to arrogate the light from the LED filament
- Reduced maintenance with use of long-lasting LED light source
- Lens and housing are made of polycarbonate with excellent durability, suitable for potentially hazardous and explosive environments
- Can be used for Zone 2 application with explosion proof rating of nR
  - ※ Zone2 : Equipment is capable of operating under abnormal high risk environmental conditions for a short duration
- Materials : Lens-PC, Housing-PC, Mounting housing-Al
- Certificates : NEPSI, KCs(KGS)
- Explosion protection rating: Ex nR IIT4, Ex nR IIT6(Layer 3 Only)
- Protection rating : IP54
- Ambient operating temperature :  $-20^{\circ}\text{C} \leq T_{\text{amb}} \leq +50^{\circ}\text{C}$



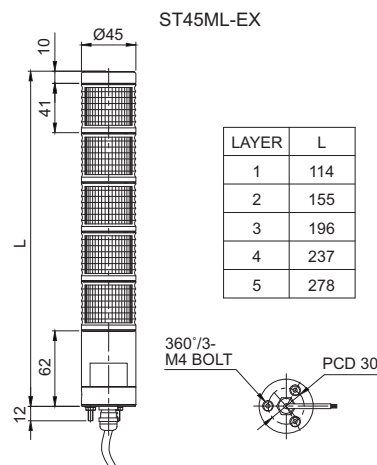
### ST45ML-EX Non-Sparking Explosion Proof LED Tower Light

Model number	Layer	Voltage	Current	Certificate	Weight	Color
ST45ML-Ex	1	AC/DC12V	0.024A		0.19kg	● R-Red
		AC/DC24V	0.012A		0.19kg	
	2	AC/DC12V	0.048A		0.24kg	● R-Red ● G-Green
		AC/DC24V	0.024A		0.24kg	
	3	AC/DC12V	0.072A		0.29kg	● R-Red ● A-Amber ● G-Green
		AC/DC24V	0.036A			
	4	AC/DC12V	0.096A		0.32kg	● R-Red ● A-Amber ● G-Green ● B-Blue
		AC/DC24V	0.048A			
	5	AC/DC12V	0.120A		0.36kg	● R-Red ● A-Amber ● G-Green ● B-Blue ● W-White
		AC/DC24V	0.060A			



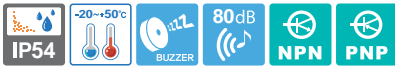
### Technical Diagram

(Units : mm)



# STB45ML-Ex

Built-in Buzzer Non-Sparking Explosion Proof Tower Lights

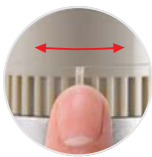


## STB45ML-Ex Built-in buzzer type

Non-sparking explosion proof LED tower lights suitable for use in zone 2 hazardous areas

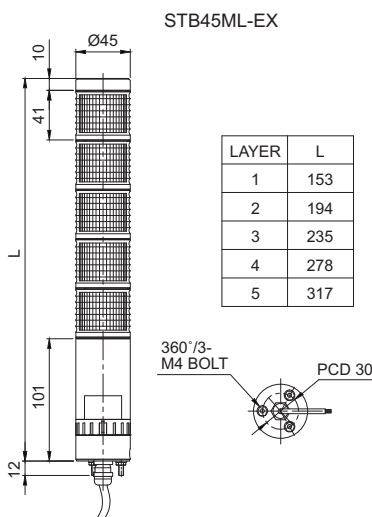


STB45ML-Ex



Sound volume adjustable by volume control lever

### Technical Diagram (Units : mm)

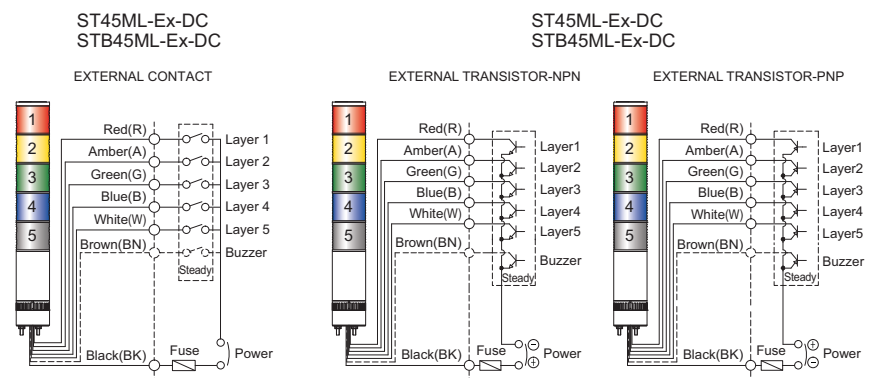


## STB45ML-Ex Built-in Buzzer Non-Sparking Explosion Proof Tower Lights

- Sound volume adjustable by volume control lever
- Sound volume : Max 80dB at 1m

Model number	Layer	Voltage	Current	Certificates	Weight	Color
STB45ML-Ex	1	AC/DC12V	0.040A		0.26kg	• R-Red
		AC/DC24V	0.043A		0.26kg	
	2	AC/DC12V	0.064A		0.30kg	• R-Red
		AC/DC24V	0.055A		0.30kg	• G-Green
	3	AC/DC12V	0.088A		0.34kg	• R-Red
		AC/DC24V	0.067A		0.34kg	• A-Amber • G-Green
	4	AC/DC12V	0.112A		0.38kg	• R-Red
		AC/DC24V	0.079A		0.38kg	• A-Amber • G-Green • B-Blue
	5	AC/DC12V	0.136A		0.42kg	• R-Red
		AC/DC24V	0.091A		0.42kg	• A-Amber • G-Green • B-Blue • W-White

### Wiring Instructions



- External power line/ Signal line standard : UL2464 AWG22(0.3sq) 400mm

### Ordering Specification

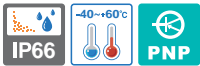
<b>ST45ML-Ex</b>	-	<b>3</b>	-	<b>12</b>	-	<b>RAG</b>
[Model number]		[Layer]		[Voltage]		[Color]
• ST45ML-Ex		• 1-1layer		• 12-DC12V		• R-Red
• STB45ML-Ex		• 2-2layers		• 24-DC24V		• A-Amber
		• 3-3layers				• G-Green
		• 4-4layers				• B-Blue
		• 5-5layers				• W-White

### ! Cautions in use of explosion proof tower lights

Contact structure of an explosion proof product must be a qualified part we provide, please do not disassemble, assemble, modify or repair arbitrarily.

# QTEX series

## Explosion Proof LED Tower Lights Flame Proof Housing



### QTEX - Standard model

Explosion proof LED tower lights with flame proof housing



**QTEX**  
Direct mount type



**QTEX**  
Wall mount type



### Common Specifications(QTEX/ QTEXB)

- Explosion proof LED tower lights with Ex d IIC rating can be used in explosive gas environments
- Excellent distance visibility by using a special reflector to aggregate the light from the LED filament
- Ø80 LED tower light mounted inside the flame proof housing
- Aluminum housing provides excellent durability
- Long-lasting high intensity LED light source
- Terminal box located inside the housing for easy power wiring
- Direct mount type and wall mount type available depending on application needs.
- Flashing rate: 60-80 flashes/min
- Selectable between steady/flashing mode with proper wire arrangement
- Sound volume : Max 80dB at 1m(QTEXB Type)
- Lens colors arrangement : ●R-Red ●A-Amber ●G-Green ●B-Blue ●W-White
- Standard housing color : Silver
- Cable entry : 3/4" NPT
- Materials : Lens-Tempered glass, Filter lens-AS, Housing-Al, Reflector-Heat resistant ABS
- Certificates : IECEx
- Protection rating : Ex d IIC T6 Gb, IP66
- Ambient operating temperature :  $-40^{\circ}\text{C} \leq T_{\text{amb}} \leq +60^{\circ}\text{C}$



### QTEX Explosion Proof LED Tower Lights with Flame Proof Housing

Model number	Layer	Voltage	Current	Certificate	Weight	Color
QTEX (Steady/ Flashing)	1	DC12V	0.080A		4.01kg	● R-Red
		DC24V	0.040A		4.01kg	
		AC110V	0.046A		4.02kg	
		AC220V	0.023A		4.02kg	
	2	DC12V	0.160A		4.15kg	● R-Red ● G-Green
		DC24V	0.080A		4.15kg	
		AC110V	0.051A		4.16kg	
		AC220V	0.025A		4.16kg	
	3	DC12V	0.240A		4.31kg	● R-Red ● A-Amber ● G-Green
		DC24V	0.120A		4.31kg	
		AC110V	0.057A		4.32kg	
		AC220V	0.028A		4.32kg	
	4	DC12V	0.320A		4.46kg	● R-Red ● A-Amber ● G-Green ● B-Blue
		DC24V	0.160A		4.46kg	
		AC110V	0.064A		4.47kg	
		AC220V	0.032A		4.47kg	
	5	DC12V	0.400A		4.61kg	● R-Red ● A-Amber ● G-Green ● B-Blue ● W-White
		DC24V	0.200A		4.61kg	
		AC110V	0.071A		4.62kg	
		AC220V	0.035A		4.62kg	



### Hazardous Area Classification

- **Zone 0 : Dangerous status**  
Ignitable concentrations of flammable gases or vapors which are present continuously or for long periods of time.
- **Zone 1 : Normal status**  
Ignitable concentrations of flammable gases or vapors which are likely to occur under normal operating conditions.
- **Zone 2 : Abnormal status or places**  
Ignitable concentrations of flammable gases or vapors which are not likely to occur under normal operating conditions and do so only for a short period of time.

# QTEX series

## Explosion Proof LED Tower Lights with Flame Proof Housing



### QTEXB - Built-in buzzer type



**QTEXB**  
Direct mount type



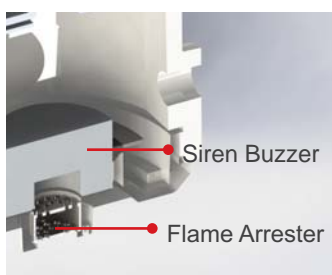
**QTEXB**  
Wall mount type

### QTEXB Built-in Siren Buzzer Type Explosion Proof LED Tower Lights with Flame Proof Housing

- Explosion proof LED tower lights with visual & audible signal that can be used in hazardous environments
- Sound tone & volume : Siren buzzer, Max 80dB at 1m

Model number	Layer	Voltage	Current	Certificate	Weight	Color
QTEXB (Steady/ Flashing)	1	DC12V	0.100A		4.11kg	● R-Red
		DC24V	0.050A		4.11kg	
		AC110V	0.073A		4.12kg	
		AC220V	0.053A		4.12kg	
	2	DC12V	0.180A		4.25kg	● R-Red ● G-Green
		DC24V	0.090A		4.25kg	
		AC110V	0.078A		4.26kg	
		AC220V	0.055A		4.26kg	
	3	DC12V	0.260A		4.41kg	● R-Red ● A-Amber ● G-Green
		DC24V	0.130A		4.41kg	
		AC110V	0.084A		4.42kg	
		AC220V	0.058A		4.42kg	
	4	DC12V	0.340A		4.56kg	● R-Red ● A-Amber ● G-Green ● B-Blue
		DC24V	0.170A		4.56kg	
		AC110V	0.091A		4.57kg	
		AC220V	0.062A		4.57kg	
	5	DC12V	0.420A		4.71kg	● R-Red ● A-Amber ● G-Green ● B-Blue ● W-White
		DC24V	0.210A		4.71kg	
		AC110V	0.098A		4.72kg	
		AC220V	0.065A		4.72kg	

#### Explosion proof structure for buzzer model



#### What is a Flame Arrester?

A flame arrester(also called a deflagration arrester) functions by absorbing the heat from a flame front traveling at sub-sonic velocities, thus dropping the burning gas/air mixture below its auto-ignition temperature: consequently, the flame cannot survive. The heat is absorbed through channels (passages) designed into an element.

#### Customization

- Built-in explosion proof cable gland
- Two way cable entries

#### Ordering Specification

QTEX	-	3	-	12	-	RAG
[Model number]		[Layer]		[Voltage]		[Color]
<ul style="list-style-type: none"> <li>• QTEX</li> <li>• QTEXB</li> </ul>		<ul style="list-style-type: none"> <li>• 1-1layer</li> <li>• 2-2layers</li> <li>• 3-3layers</li> <li>• 4-4layers</li> <li>• 5-5layers</li> </ul>		<ul style="list-style-type: none"> <li>• 12-DC12V</li> <li>• 24-DC24V</li> <li>• 110-AC110V</li> <li>• 220-AC220V</li> </ul>		<ul style="list-style-type: none"> <li>● R-Red</li> <li>● A-Amber</li> <li>● G-Green</li> <li>● B-Blue</li> <li>● W-White</li> </ul>



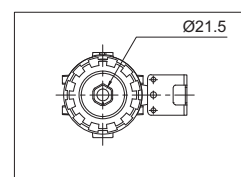
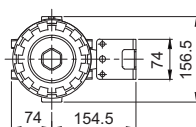
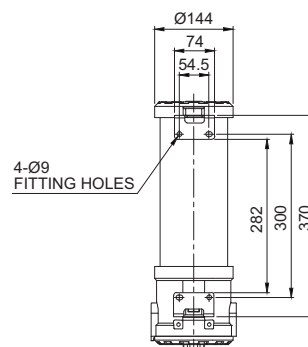
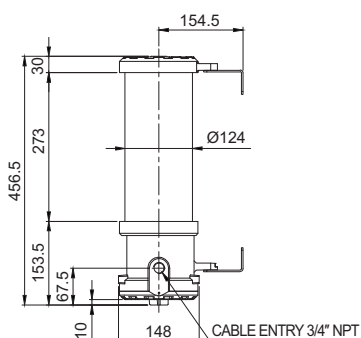
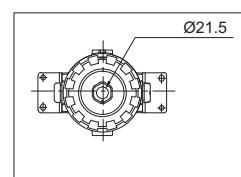
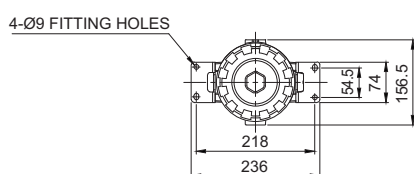
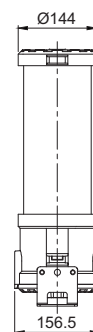
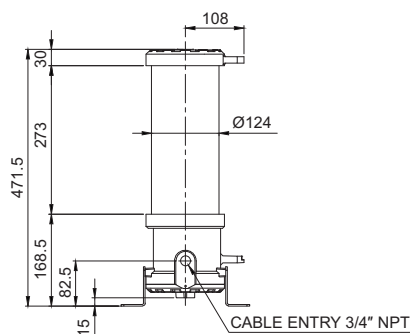
# QTEX series

## Explosion Proof LED Tower Lights with Flame Proof Housing



### Technical Diagram

(Units : mm)



### Cautions in using explosion proof tower lights

- Explosion proof products should be maintained by explosion proof regulation, please do not disassemble, assemble, modify or repair arbitrarily. In case disassembly is required for wiring or repair, structures such as the contact parts should maintain the same initial condition that we provided.
- Cable gland must be used in explosion proof certified products which satisfy the T6 temperature rating and IP66 protection rating.

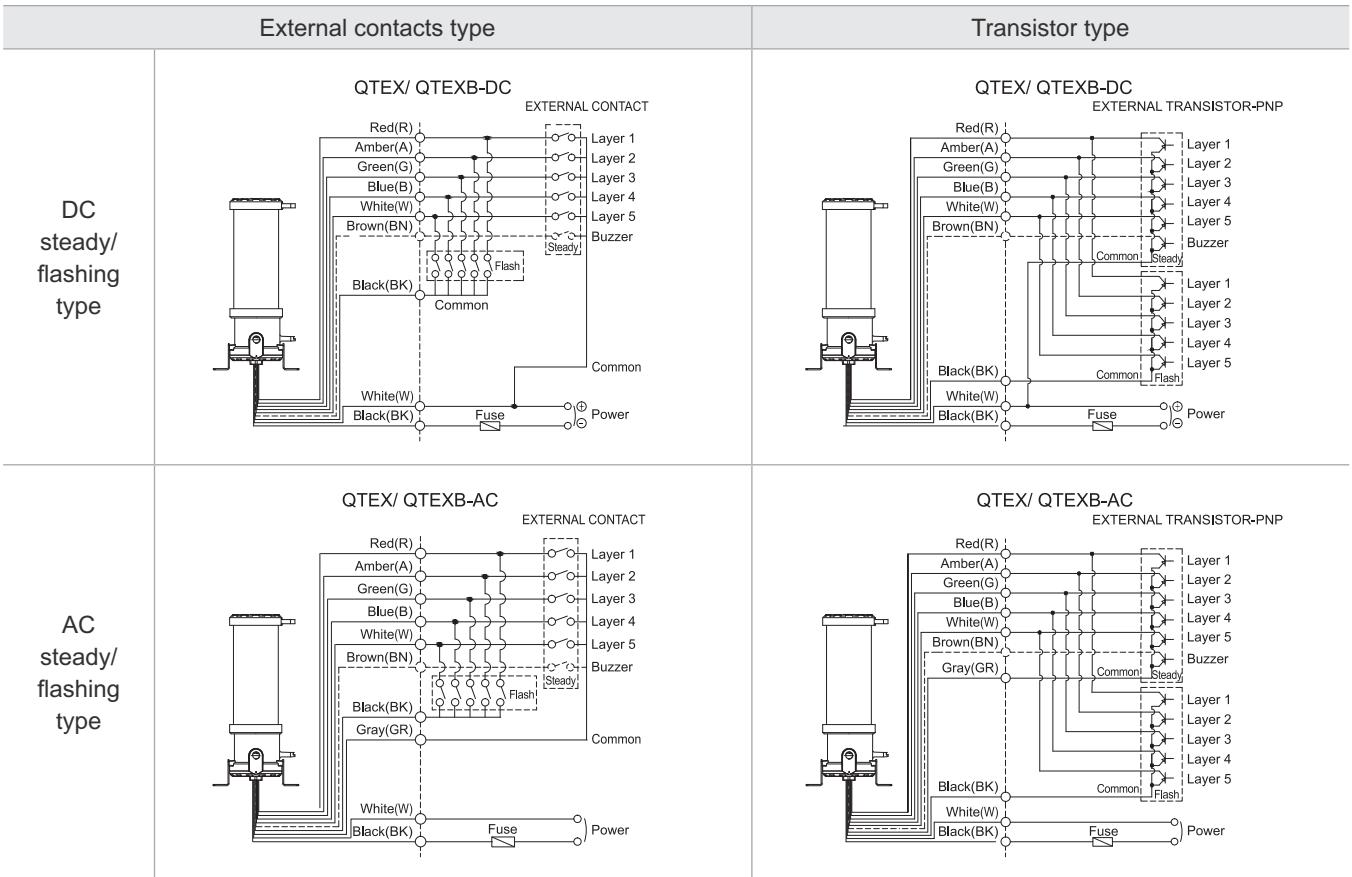
# QTEX series

Explosion Proof LED Tower Lights with Flame Proof Housing

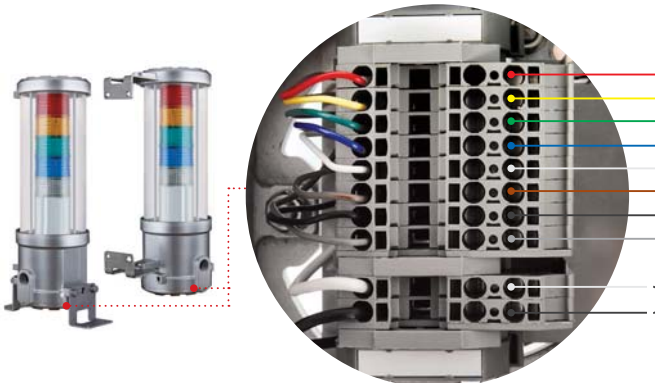


## Wiring Instructions

- QTEX/ QTEXB wiring with transistors and external contacts
- In case of wiring with transistors, please use PNP transistors and wiring exactly following below technical diagram



## Terminal Wiring Information



- 1 Layer (RED LED)
- 2 Layers (AMBER LED)
- 3 Layers (GREEN LED)
- 4 Layers (BLUE LED)
- 5 Layers (WHITE LED)
- Buzzer
- Flashing common
- Steady common
- Power

QTEX series consists of a blocked terminal which is convenient for internal wiring of the terminal box. Please refer to technical diagram for detailed Wiring Instructions.

# SNE series

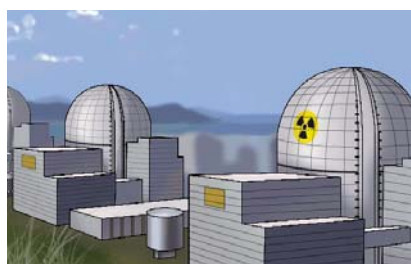
## Ø130mm Explosion Proof Warning/ Signal Lights



SNELR



SNEL



Flameproof warning/indicator lights are applied in an areas where potentially explosive materials may linger. For example, from a pipe or duct in a coolant generator system in a nuclear power plant in the image above.



### Common Specifications(SNELR/ SNEL/ SNE-S/ SNE)

- Light weight and compact explosion proof warning lights with a variety of light source selections from bulb, LED, and xenon lamp
- Aluminum housing provides excellent durability
- Fully enclosed structure with protection rating of IP66
- Integrated housing and terminal box model
- Housing standard color : MUNSSELL No. 7.5BG 7/2
- Cable entry : 1/2" NPT
- Materials : Lens-Tempered glass, Inner lens-PC, Housing-Al, Protection cage-STSS 316L, Reflector for LED type-PC/ Reflector for bulb type-Heat resistant ABS
- Certificates : IECEx, ATEX, NEPSI, KIMM, KOSHA, CCS
- Protection rating :
  - IECEx - Ex d IIC T6 Gb, IP66
  - ATEX -  $\text{Ex d IIC T6, IP66}$
  - NEPSI, KIMM, KOSHA - Ex d IIC T6, IP66
- Ambient operating temperature :  $-40^{\circ}\text{C} \leq T_{\text{amb}} \leq +60^{\circ}\text{C}$



### SNELR LED Revolving Warning Light

- Features high visibility in all directions with special concentrated LED light structure and multi side reflector
- Revolving speed : 120-140RPM

Model number	Voltage	Current	Certificates	Weight	Color
SNELR	DC12V	0.183A		3.15kg	<ul style="list-style-type: none"> <li>• R-Red</li> <li>• A-Amber</li> <li>• G-Green</li> <li>• B-Blue</li> </ul>
	DC24V	0.127A		3.15kg	
	AC110V	0.035A		3.85kg	
	AC220V	0.017A		3.85kg	



### SNEL LED Steady/ Flashing Signal Light

- Long-lasting high intensity LED light source
- Suitable for applications where bulb replacement is hard
- Built in switch for steady/flashing selection
- Flashing rate : 60-80 flashes/min

Model number	Voltage	Current	Certificates	Weight	Color
SNEL	DC12V	0.123A		3.65kg	<ul style="list-style-type: none"> <li>• R-Red</li> <li>• A-Amber</li> <li>• G-Green</li> <li>• B-Blue</li> </ul>
	DC24V	0.094A		3.65kg	
	AC110V	0.035A		4.30kg	
	AC220V	0.017A		4.30kg	



### Customization

- Explosion proof cable gland attached type available (Standard type does not provide explosion proof cable gland)
- Customized 2 way cable entries
- Customized cable entry (M20×1.5) available
- ATEX certified type
- IECEx certified type

# SNE series

## Ø130mm Explosion Proof Warning/ Signal Lights



**SNE-S**



**SNE**

### SNE-S Xenon Lamp Strobe Signal Light

- Lamp connector fastening structure allows for convenient lamp replacement
- Excellent long-distance visibility with strong flashing signal diffusion
- Flashing rate : 60-80 flashes/min

Model number	Voltage	Current	Bulb			Certificates	Weight	Color
			Spec	Standard	Parts no			
SNE-S	DC12V	0.433A	200V -550V	EUB0641 -1A(G) U Type	48		3.60kg	<ul style="list-style-type: none"> <li>• R-Red</li> <li>• A-Amber</li> <li>• G-Green</li> <li>• B-Blue</li> </ul>
	DC24V	0.216A					3.60kg	
	AC110V	0.076A					4.25kg	
	AC220V	0.081A					4.25kg	

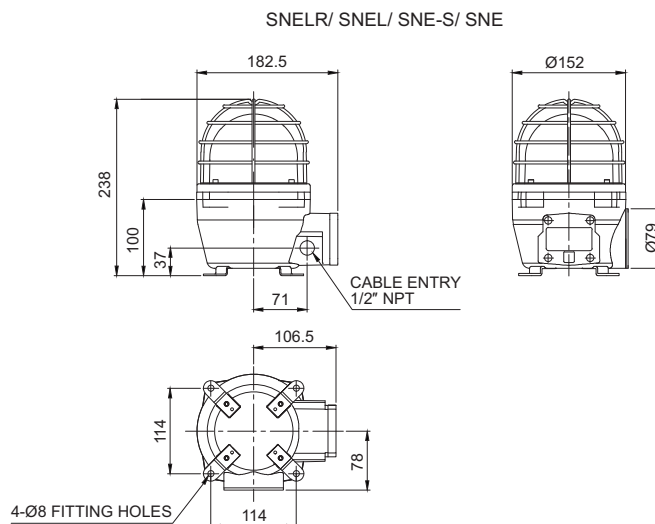
### SNE Bulb Revolving Warning Light

- Excellent signal light diffusion effect with multi-faced reflector
- Revolving speed : 120-140RPM

Model number	Voltage	Current	Bulb			Certificates	Weight	Color
			Spec	Standard	Parts no			
SNE	DC12V	1.155A	12V15W	G23 15S	17		3.25kg	<ul style="list-style-type: none"> <li>• R-Red</li> <li>• A-Amber</li> <li>• G-Green</li> <li>• B-Blue</li> </ul>
	DC24V	0.766A	24V15W	G23 15S	18		3.25kg	
	AC110V	0.204A	12V15W	G23 15S	17		3.95kg	
	AC220V	0.102A	12V15W	G23 15S	17		3.95kg	

### Technical Diagram

(Units : mm)



### Ordering Specification

SNE	-	220	-	R
[Model number]		[Voltage]		[Color]
<ul style="list-style-type: none"> <li>• SNELR</li> <li>• SNEL</li> <li>• SNE-S</li> <li>• SNE</li> </ul>		<ul style="list-style-type: none"> <li>• 12-DC12V</li> <li>• 24-DC24V</li> <li>• 110-AC110V</li> <li>• 220-AC220V</li> </ul>		<ul style="list-style-type: none"> <li>• R-Red</li> <li>• A-Amber</li> <li>• G-Green</li> <li>• B-Blue</li> </ul>

# SNES series

Ø130mm Explosion Proof Warning/ Signal Lights with Siren Buzzer



**Siren buzzer sound output of Max 105dB**



**SNESLR**



**SNESL**



Flameproof warning/ signal lights applied in an areas where potentially explosive materials may linger as shown in the refinery image above.



## Common Specifications(SNESLR/ SNESL/ SNES-S/ SNES)

- Light weight and compact explosion proof warning lights with a siren buzzer
- A variety of light source selections from bulb, LED, and xenon lamp
- Aluminum housing provides excellent durability
- Fully enclosed structure with protection rating of IP66
- Integrated housing and terminal box model
- Sound type and sound volume : Siren buzzer- Max 105dB at 1m/ 7 sounds buzzer, Max 95dB at 1m
- User selected built-in buzzer with 7 sound patterns available upon request
- Housing standard color : MUNSELL No. 7.5BG 7/2
- Cable entry : 1/2" NPT
- Materials : Lens-Tempered glass, Inner lens-PC, housing-Al, Protection cage-ST316L, Reflector for LED type-PC/ Reflector for bulb type-Heat resistant ABS
- Certificates : IECEx, ATEX, NEPSI, KIMM, KOSHA, CCS
- Protection rating :
  - IECEX - Ex d IIC T6 Gb, IP66
  - ATEX - Ex II 2G Ex d IIC T6, IP66
  - KOSHA - Ex d IIB+H2 T6
  - NEPSI, KIMM - Ex d IIC T6, IP66
- Ambient operating temperature :  $-40^{\circ}\text{C} \leq T_{\text{amb}} \leq +60^{\circ}\text{C}$



## SNESLR LED Revolving Warning Light with Siren Buzzer

- Excellent omni-directional visibility with LED light collecting system and special multifaceted reflector
- Revolving speed : 120-140RPM

Model number	Voltage	Current	Sound pattern/ dB	Certificates	Weight	Color
SNESLR	DC12V	0.485A	• Warning sound(Buzzer) : 105dB • 7 sounds(Buzzer): 95dB		3.60kg	• R-Red • A-Amber • G-Green • B-Blue
	DC24V	0.411A			3.60kg	
	AC110V	0.111A			4.30kg	
	AC220V	0.055A			4.30kg	



## SNESL LED Steady/ Flashing Signal Light with Siren Buzzer

- Long-lasting high intensity LED light source
- Suitable for applications where bulb replacement is hard
- Built in switch for steady/flashing selection
- Flashing rate : 60-80 flashes/min

Model number	Voltage	Current	Sound pattern/ dB	Certificates	Weight	Color
SNESL	DC12V	0.432A	• Warning sound(Buzzer) : 105dB • 7 sounds(Buzzer): 95dB		3.65kg	• R-Red • A-Amber • G-Green • B-Blue
	DC24V	0.377A			3.65kg	
	AC110V	0.111A			4.30kg	
	AC220V	0.055A			4.30kg	

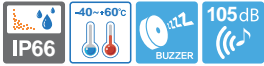


## Customization

- Explosion proof cable gland attached type available (Standard type does not come with explosion proof cable gland)
- Customized 2 way cable entries
- Customized cable entry (M20×1.5) available
- ATEX certified type
- IECEx certified type
- Customized built-in buzzer type with 7 sound patterns available

# SNES series

## Ø130mm Explosion Proof Warning/ Signal Lights with Siren Buzzer



**Siren buzzer sound output of Max 105dB**



**SNES-S**

### SNES-S Xenon Strobe Signal Light with Siren Buzzer

- Lamp connector fastening structure allows for convenient lamp replacement
- Excellent long-distance visibility with strong flashing signal diffusion
- Flashing rate : 60-80 flashes/min

Model number	Voltage	Current	Bulb			Sound pattern/dB	Certificates	Weight	Color	
			Spec	Standard	Parts no					
SNES-S	DC12V	0.655A	200V -550V	EUB0641 -1A(G) U Type	48	<ul style="list-style-type: none"> <li>• Warning sounds(Buzzer) : 105dB</li> <li>• 7 sounds(Buzzer) : 95dB</li> </ul>		3.60kg	<ul style="list-style-type: none"> <li>• R-Red</li> <li>• A-Amber</li> <li>• G-Green</li> <li>• B-Blue</li> </ul>	
	DC24V	0.500A								3.60kg
	AC110V	0.104A								4.25kg
	AC220V	0.066A								4.25kg

### SNES Bulb Revolving Warning Light

- Excellent signal light diffusion effect with multi-faced reflector
- Revolving speed : 120-140RPM

Model number	Voltage	Current	Bulb			Sound pattern/dB	Certificates	Weight	Color	
			Spec	Standard	Parts no					
SNES	DC12V	1.766A	12V15W	G23 15S	17	<ul style="list-style-type: none"> <li>• Warning sounds(Buzzer) : 105dB</li> <li>• 7 sounds(Buzzer) : 95dB</li> </ul>		3.70kg	<ul style="list-style-type: none"> <li>• R-Red</li> <li>• A-Amber</li> <li>• G-Green</li> <li>• B-Blue</li> </ul>	
	DC24V	1.044A	24V15W	G23 15S	18					3.70kg
	AC110V	0.288A	12V15W	G23 15S	17					4.40kg
	AC220V	0.144A	12V15W	G23 15S	17					4.40kg

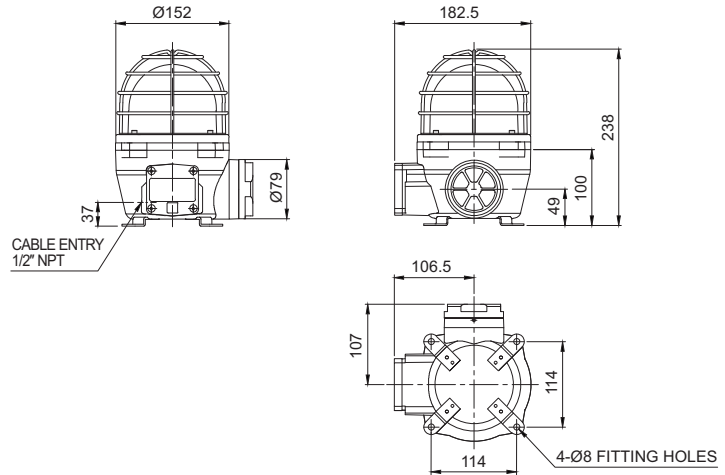
### Technical Diagram

(Units : mm)



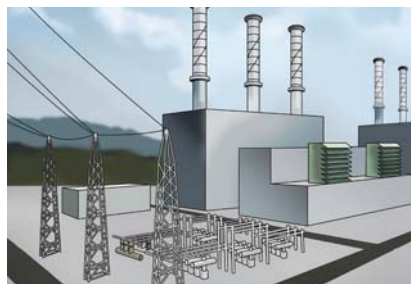
**SNES**

SNESLR/ SNESL/ SNES-S/ SNES



### Ordering Specification

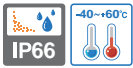
SNES	-	220	-	R
[Model number]		[Voltage]		[Color]
<ul style="list-style-type: none"> <li>• SNESLR</li> <li>• SNESL</li> <li>• SNES-S</li> <li>• SNES</li> </ul>		<ul style="list-style-type: none"> <li>• 12-DC12V</li> <li>• 24-DC24V</li> <li>• 110-AC110V</li> <li>• 220-AC220V</li> </ul>		<ul style="list-style-type: none"> <li>• R-Red</li> <li>• A-Amber</li> <li>• G-Green</li> <li>• B-Blue</li> </ul>



Flameproof warning/ signal lights applied in dust explosion areas such as coal dust shown in thermoelectric power plant image above.

# SE series

## Brass Housing Explosion Proof Warning/ Signal Lights



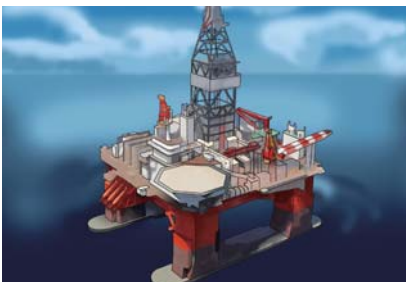
The brass housing product with excellent corrosion resistance



SELR



SEL



Flameproof warning/ signal lights applied in Oil/ Natural Gas offshore rigs where explosions can be ignited by mining, production, and storage as shown in the offshore rig image above.



### Common Specifications(SELR/ SEL/ SE-S/ SE)

- Brass housing explosion proof warning lights with excellent corrosion resistant
- A variety of light source selections from bulb, LED, and xenon lamp
- Fully enclosed structure with protection rating of IP66
- Integrated housing and terminal box model
- Housing standard color : MUNSSELL No. 7.5BG 7/2
- Cable entry : 1/2" NPT
- Materials : Lens-Tempered glass, Inner lens-PC, Housing-Al, Protection cage-STSS 316L, Reflector for LED type-PC/ Reflector for bulb type-Heat resistant ABS
- Certificates : KIMM, ABS
- Protection rating :
- KIMM-Ex d IIC T6, IP66
- Ambient operating temperature :  $-40^{\circ}\text{C} \leq T_{\text{amb}} \leq +60^{\circ}\text{C}$



### SELR LED Revolving Warning Light

- Excellent omni-directional visibility with LED light collecting system and special multifaceted reflector
- Revolving speed : 120-140RPM

Model number	Voltage	Current	Certificate	Weight	Color
SELR	DC12V	0.183A	KIMM	13.35kg	<ul style="list-style-type: none"> <li>● R-Red</li> <li>● A-Amber</li> <li>● G-Green</li> <li>● B-Blue</li> </ul>
	DC24V	0.127A		13.35kg	
	AC110V	0.035A	ABS	13.91kg	
	AC220V	0.017A		13.91kg	



### SEL LED Steady/ Flashing Signal Light

- Long-lasting high intensity LED light source
- Suitable for applications where bulb replacement is hard
- Built in switch for steady/flashing selection
- Flashing rate : 60-80 flashes/min

Model number	Voltage	Current	Certificate	Weight	Color
SEL	DC12V	0.123A	KIMM	13.29kg	<ul style="list-style-type: none"> <li>● R-Red</li> <li>● A-Amber</li> <li>● G-Green</li> <li>● B-Blue</li> </ul>
	DC24V	0.094A		13.29kg	
	AC110V	0.035A	ABS	14.26kg	
	AC220V	0.017A		14.26kg	



### Customization

- Explosion proof cable gland attached type available (Standard type does not provide explosion proof cable gland)
- Customized 2 way cable entries
- Customized cable entry (3/4" NPT, M20×1.5) available

# SE series

## Brass Housing Explosion Proof Warning/ Signal Lights



### SE-S Xenon Strobe Signal Light

- Lamp connector fastening structure allows for convenient lamp replacement
- Excellent long-distance visibility with strong strobe signal diffusion
- Flashing rate : 60-80 flashes/min



SE-S

Model number	Voltage	Current	Bulb			Certificates	Weight	Color
			Spec	Standard	Parts no			
SE-S	DC12V	0.433A	200V -550V	EUB0641 -1A(G) U Type	48	  	13.53kg	<ul style="list-style-type: none"> <li>• R-Red</li> <li>• A-Amber</li> <li>• G-Green</li> <li>• B-Blue</li> </ul>
	DC24V	0.216A					13.53kg	
	AC110V	0.076A					13.51kg	
	AC220V	0.061A					13.51kg	

### SE Bulb Revolving Warning Light

- Excellent signal light diffusion effect with multi-faced reflector
- Revolving speed : 120-140RPM

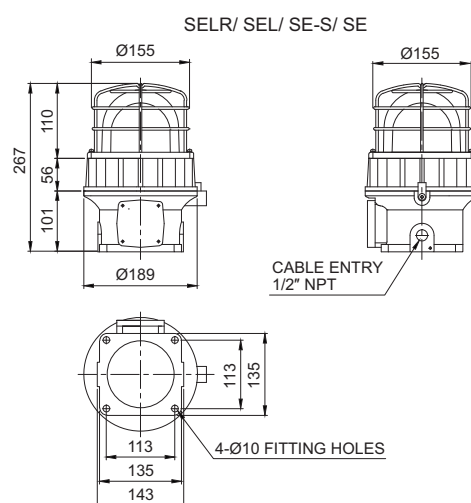


SE

Model number	Voltage	Current	Bulb			Certificates	Weight	Color
			Spec	Standard	Parts no			
SE	DC12V	1.155A	12V15W	G23 15S	17	  	13.35kg	<ul style="list-style-type: none"> <li>• R-Red</li> <li>• A-Amber</li> <li>• G-Green</li> <li>• B-Blue</li> </ul>
	DC24V	0.766A	24V15W	G23 15S	18		13.35kg	
	AC110V	0.204A	12V15W	G23 15S	17		13.91kg	
	AC220V	0.102A	12V15W	G23 15S	17		13.91kg	

### Technical Diagram

(Units : mm)



### Ordering Specification

<b>SE</b>	-	<b>220</b>	-	<b>R</b>
[Model number]		[Voltage]		[Color]
<ul style="list-style-type: none"> <li>• SELR</li> <li>• SEL</li> <li>• SE-S</li> <li>• SE</li> </ul>		<ul style="list-style-type: none"> <li>• 12-DC12V</li> <li>• 24-DC24V</li> <li>• 110-AC110V</li> <li>• 220-AC220V</li> </ul>		<ul style="list-style-type: none"> <li>• R-Red</li> <li>• A-Amber</li> <li>• G-Green</li> <li>• B-Blue</li> </ul>



# SEA series

## Ø150mm Explosion Proof Warning/ Signal Lights



**SEA LR**



**SEA L**



Flameproof warning/ signal lights applied in areas where combustible substances such as oil are carried in bulk on a vessel.



### Common Specifications(SEALR/ SEAL/ SEAS/ SEA)

- Large explosion proof warning/ signal lights with excellent visibility for long distance
- A variety of light source selections from bulb, LED, and xenon lamp
- Aluminum housing provides excellent durability
- Fully enclosed structure with protection rating of IP66
- Integrated housing and terminal box model
- Housing standard color : MUNSELL No. 7.5BG 7/2
- Cable entry : 1/2" NPT
- Materials : Lens-Tempered glass, Inner lens-PC, Housing-Al, Protection cage-STSS 316L, Reflector for LED type-PC/ Reflector for bulb type-Heat resistant ABS
- Certificates : IECEx, ATEX, NEPSI, KIMM, KOSHA, ABS, CCS, KR
- Explosive protection rating :
  - IECEx - Ex d IIC T6 Gb, IP66
  - ATEX -  $\text{Ex}$  II 2G Ex d IIC T6, IP66
  - NEPSI, KIMM, KOSHA - Ex d IIC T6, IP66
- Ambient operating temperature :  $-40^{\circ}\text{C} \leq T_{\text{amb}} \leq +60^{\circ}\text{C}$



### SEA LR LED Revolving Warning Light

- Excellent omni-directional visibility with LED light collecting system and special multifaceted reflector
- Revolving speed : 120-140RPM

Model number	Voltage	Current	Certificates	Weight	Color
SEA LR	DC12V	0.183A		5.33kg	<ul style="list-style-type: none"> <li>• R-Red</li> <li>• A-Amber</li> <li>• G-Green</li> <li>• B-Blue</li> </ul>
	DC24V	0.127A		5.33kg	
	AC110V	0.035A		5.74kg	
	AC220V	0.017A		5.74kg	



### SEA L LED Steady/ Flashing Signal Light

- Long-lasting high intensity LED light source
- Suitable for applications where bulb replacement is difficult
- Built in switch for steady/flashing selection
- Flashing rate : 60-80 flashes/min

Model number	Voltage	Current	Certificates	Weight	Color
SEA L	DC12V	0.182A		4.87kg	<ul style="list-style-type: none"> <li>• R-Red</li> <li>• A-Amber</li> <li>• G-Green</li> <li>• B-Blue</li> </ul>
	DC24V	0.163A		4.87kg	
	AC110V	0.044A		5.25kg	
	AC220V	0.022A		5.25kg	



### Customization

- Explosion proof cable gland attached type available (Standard type does not come with explosion proof cable gland)
- Customized 2 way cable entries
- Customized cable entry (3/4" NPT, M20×1.5, M25×1.5) available
- ATEX certified type
- IECEx certified type

# SEA series

## Ø150mm Explosion Proof Warning/ Signal Lights



SEAS



SEA

### SEAS Xenon Lamp Strobe Signal Light

- Lamp connector fastening structure allows for convenient lamp replacement
- High efficiency strobe light offers excellent visibility for long distances
- Flashing rate : 60-80 flashes/min

Model number	Voltage	Current	Bulb			Certificates	Weight	Color
			Spec	Standard	Parts no			
SEAS	DC12V	1.001A	200V -550V	EUB0641 -1A(G) U Type	48		5.39kg	<ul style="list-style-type: none"> <li>• R-Red</li> <li>• A-Amber</li> <li>• G-Green</li> <li>• B-Blue</li> </ul>
	DC24V	0.616A						
	AC110V	0.133A						
	AC220V	0.106A						

### SEA Bulb Revolving Warning Light

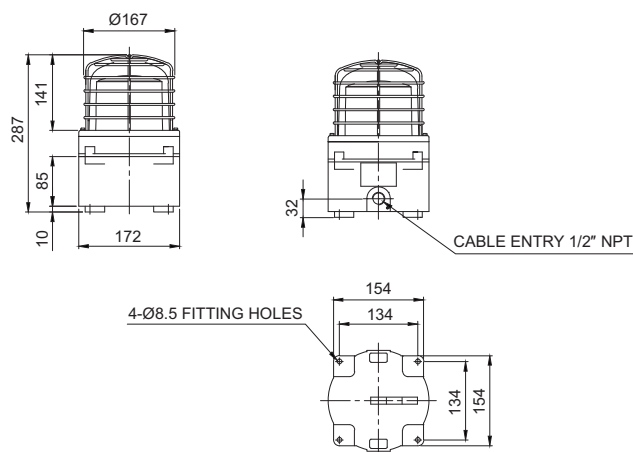
- Excellent diffusion effect with special multifaceted reflector
- Revolving speed : 120-140RPM

Model number	Voltage	Current	Bulb			Certificates	Weight	Color
			Spec	Standard	Parts no			
SEA	DC12V	1.155A	12V15W	G23 15S	17		5.36kg	<ul style="list-style-type: none"> <li>• R-Red</li> <li>• A-Amber</li> <li>• G-Green</li> <li>• B-Blue</li> </ul>
	DC24V	0.766A	24V15W	G23 15S	18			
	AC110V	0.204A	12V15W	G23 15S	17			
	AC220V	0.102A	12V15W	G23 15S	17			

### Technical Diagram

(Units : mm)

SEALR/ SEAL/ SEAS/ SEA



### Ordering Specification

<b>SEA</b>	-	<b>220</b>	-	<b>R</b>
[Model number]		[Voltage]		[Color]
<ul style="list-style-type: none"> <li>• SEALR</li> <li>• SEAL</li> <li>• SEAS</li> <li>• SEA</li> </ul>		<ul style="list-style-type: none"> <li>• 12-DC12V</li> <li>• 24-DC24V</li> <li>• 110-AC110V</li> <li>• 220-AC220V</li> </ul>		<ul style="list-style-type: none"> <li>• R-Red</li> <li>• A-Amber</li> <li>• G-Green</li> <li>• B-Blue</li> </ul>

# SESA series

## Explosion Proof Warning/ Signal Light and Max 118dB Electric Horn Combinations



**Explosion proof warning light and electric horn combinations with sound output of Max 118dB**



**SESALR**



**SESAL**



**SESAS**



### Common Specifications(SESALR/ SESAL/ SESAS/ SESA)

- Large explosion proof warning light and electric horn combinations
- A variety of light sources and sound selections to fit your sophisticated application needs
- Aluminum housing provides excellent durability
- Fully enclosed structure with protection rating of IP66
- Integrated housing and terminal box model
- Sound volume : Max 118dB at 1m(Volume adjustable)
- Standard housing color : MUNSELL No. 7.5BG 7/2
- Cable entry : 1/2" NPT
- Materials : Lens-Tempered glass, Filter-PC, Housing-Al, Protection cage-SUS316L, Reflector for LED type-PC/Reflector for bulb type-Heat resistant ABS
- Certificates : IECEx, ATEX, NEPSI, KIMM, KOSHA, ABS, CCS, KR
- Protection rating :
  - IECEX - Ex d IIC T6 Gb, IP66
  - ATEX -  $\text{Ex}$  II 2G Ex d IIC T6, IP66
  - NEPSI, KIMM, KOSHA - Ex d IIC T6, IP66
- Ambient operating temperature :  $-40^{\circ}\text{C} \leq T_{\text{amb}} \leq +60^{\circ}\text{C}$



### SESALR LED Revolving Warning Light and Electric Horn Combination

- Excellent omni-directional visibility with LED light collecting system and special multifaceted reflector
- Revolving speed : 120-140RPM

Model number	Voltage	Current	Sound pattern and volume	Certificates	Weight	Color
SESALR	DC12V	2.633A	<ul style="list-style-type: none"> <li>• WS-5 Warning sounds : 118dB</li> <li>• WP-5 Special warning sounds : 118dB</li> <li>• WM-5 Melodies : 118dB</li> <li>• WA-5 Alarms : 115dB</li> <li>• WV-5 Customizable voices : 113dB</li> </ul>		8.31kg	<ul style="list-style-type: none"> <li>• R-Red</li> <li>• A-Amber</li> <li>• G-Green</li> <li>• B-Blue</li> </ul>
	DC24V	1.288A			8.31kg	
	AC110V	0.308A		7.92kg		
	AC220V	0.154A		7.92kg		



### SESAL LED Steady/ Flashing Signal Light and Electric Horn Combination

- Long product lifetime with the application of a high intensity LED light source
- Suitable for locations where bulb replacement is inconvenient
- Built in switch for steady/flashing selection
- Flashing rate : 60-80 flashes/min

Model number	Voltage	Current	Sound pattern and volume	Certificates	Weight	Color
SESAL	DC12V	2.511A	<ul style="list-style-type: none"> <li>• WS-5 Warning sounds : 118dB</li> <li>• WP-5 Special warning sounds : 118dB</li> <li>• WM-5 Melodies : 118dB</li> <li>• WA-5 Alarms : 115dB</li> <li>• WV-5 Customizable voices : 113dB</li> </ul>		8.42kg	<ul style="list-style-type: none"> <li>• R-Red</li> <li>• A-Amber</li> <li>• G-Green</li> <li>• B-Blue</li> </ul>
	DC24V	1.222A			8.42kg	
	AC110V	0.286A		9.02kg		
	AC220V	0.143A		9.02kg		



### SESAS Xenon Lamp Strobe Signal Light and Electric Horn Combination

- Lamp connector fastening structure allows for convenient lamp replacement
- High efficiency strobe light offers excellent visibility for long distances
- Flashing rate : 60-80 flashes/min

Model number	Voltage	Current	Bulb			Sound pattern and volume	Certificates	Weight	Color
			Spec	Standard	Parts no				
SESAS	DC12V	2.933A	200V -550V	EUB0641 -1A(G) U Type	48	<ul style="list-style-type: none"> <li>• WS-5 Warning sounds : 118dB</li> <li>• WP -5 Special warning sounds : 118dB</li> <li>• WM-5 Melodies : 118dB</li> <li>• WA-5 Alarms : 115dB</li> <li>• WV -5 Customizable voices : 113dB</li> </ul>		8.45kg	<ul style="list-style-type: none"> <li>• R-Red</li> <li>• A-Amber</li> <li>• G-Green</li> <li>• B-Blue</li> </ul>
	DC24V	1.411A						8.45kg	
	AC110V	0.360A						8.86kg	
	AC220V	0.220A						8.86kg	

# SESA series

## Explosion Proof Warning/ Signal Light and Max 118dB Electric Horn Combinations



SESA

### SESA Bulb Revolving Warning Light and Electric Horn Combinations

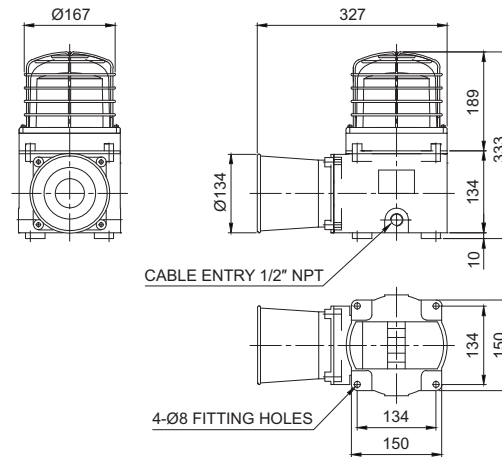
- Excellent diffusion effect with special multifaceted reflector
- Revolving speed : 120-140RPM

Model number	Voltage	Current	Bulb			Sound pattern and volume	Certificates	Weight	Color
			Spec	Standard	Parts no				
SESA	DC12V	3.755A	12V15W	G23 15S	17	<ul style="list-style-type: none"> <li>• WS-5 Warning sounds :118dB</li> <li>• WP</li> <li>• -5 Special warning sounds :118dB</li> <li>• WM-5 Melodies : 118dB</li> <li>• WA-5 Alarms : 115dB</li> <li>• WV</li> <li>• -5 Customizable voices : 113dB</li> </ul>		8.57kg	<ul style="list-style-type: none"> <li>• R-Red</li> <li>• A-Amber</li> <li>• G-Green</li> <li>• B-Blue</li> </ul>
	DC24V	1.788A	24V15W	G23 15S	18				
	AC110V	0.422A	12V15W	G23 15S	17				
	AC220V	0.211A	12V15W	G23 15S	17				

### Technical Diagram

(Units : mm)

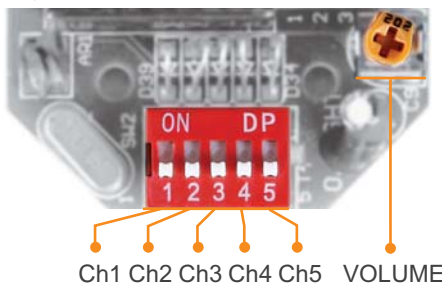
SESALR/ SESAL/ SESAS/ SESA



### Sound Selection Instructions and Wiring

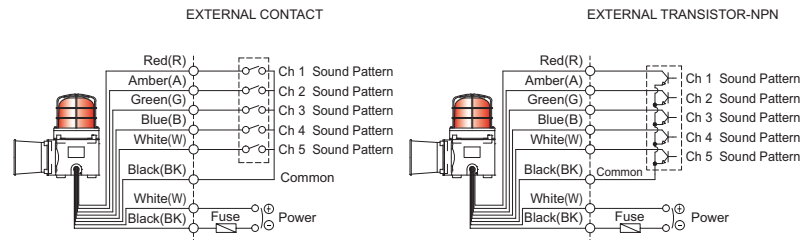
- Standard type : Select sound using the switch inside of the unit. When you turn on the dip switch for each channel, designated sound is played.

- Customization : External contact(LC)  
Customization of signal line threading can be choice between external contact and transistor which can be fit for control unit.



Ch1 Ch2 Ch3 Ch4 Ch5 VOLUME

SESA SERIES-DC/AC



### Customization

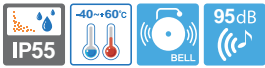
- Built-in explosion proof cable gland type
- 2 way cable entries
- Customized cable entry (3/4" NPT, M20×1.5, M25×1.5) available
- ATEX compliant products
- IECEx compliant products

### Ordering Specification

SESAS	-	WS	-	220	-	R
[Model number]		[Sound]		[Voltage]		[Color]
<ul style="list-style-type: none"> <li>• SESALR</li> <li>• SESAL</li> <li>• SESAS</li> <li>• SESA</li> </ul>		<ul style="list-style-type: none"> <li>• WS-Warning sounds</li> <li>• WP-Special warning sounds</li> <li>• WM-Melodies</li> <li>• WA-Alarms</li> <li>• WV-Customizable sounds</li> </ul>		<ul style="list-style-type: none"> <li>• 12-DC12V</li> <li>• 24-DC24V</li> <li>• 110-AC110V</li> <li>• 220-AC220V</li> </ul>		<ul style="list-style-type: none"> <li>• R-Red</li> <li>• A-Amber</li> <li>• G-Green</li> <li>• B-Blue</li> </ul>

# SEBA series

Explosion Proof Warning/ Signal Lights and Alarm Bell Combinations



SEBA



SEBAL/ SEBAS

SEBALR

## Common Specifications(SEBALR/ SEBAL/ SEBAS/ SEBA)

- Large explosion proof warning/ signal light and alarm bell combinations
- Standard housing color : MUNSELL No. 7.5BG 7/2
- Cable entry : 1/2" NPT
- Materials : Lens-Tempered glass, Filter-PC, housing-AI, Protection cage-SUS316L, Reflector-PC/ Reflector for bulb type-Heat resistant ABS
- Certificates : KIMM, ABS, KR
- Protection rating : Ex d IIC T6, IP55
- Ambient operating temperature :  $-40^{\circ}\text{C} \leq T_{\text{amb}} \leq +60^{\circ}\text{C}$

## SEBALR LED Revolving Warning Light and Alarm Bell

- Revolving speed : 120-140RPM

Model number	Voltage	Current	Volume	Certificates	Weight	Color
SEBALR	DC12V	0.230A	95dB		7.20kg	• R-Red
	DC24V	0.172A			7.20kg	• A-Amber
	AC110V	0.122A			7.92kg	• G-Green
	AC220V	0.061A			7.92kg	• B-Blue

## SEBAL LED Steady/ Flashing Signal Light and Alarm Bell

- Flashing rate : 60-80 flashes/min(Built in switch for steady/flashing selection)

Model number	Voltage	Current	Volume	Certificates	Weight	Color
SEBAL	DC12V	0.232A	95dB		7.25kg	• R-Red
	DC24V	0.213A			7.25kg	• A-Amber
	AC110V	0.131A			7.99kg	• G-Green
	AC220V	0.065A			7.99kg	• B-Blue

## SEBAS Xenon Strobe signal Light and Alarm Bell

- Lamp connector fastening structure allows for convenient lamp replacement
- Flashing rate : 60-80 flashes/min

Model number	Voltage	Current	Bulb		Volume	Certificates	Weight	Color
			Spec	Standard Parts no				
SEBAS	DC12V	1.051A	200V -550V	EUB0641 -1A(G) U Type	95dB		7.24kg	• R-Red
	DC24V	0.666A					7.24kg	• A-Amber
	AC110V	0.222A					7.67kg	• G-Green
	AC220V	0.150A					7.67kg	• B-Blue

## SEBA Bulb Revolving Warning Light and Alarm Bell

- Revolving speed : 120-140RPM

Model number	Voltage	Current	Bulb		Volume	Certificates	Weight	Color
			Spec	Standard Parts no				
SEBA	DC12V	1.591A	12V15W	G23 15S 17	95dB		7.37kg	• R-Red
	DC24V	0.811A	24V15W	G23 15S 18			7.37kg	• A-Amber
	AC110V	0.291A	12V15W	G23 15S 17			8.06kg	• G-Green
	AC220V	0.145A	12V15W	G23 15S 17			8.06kg	• B-Blue

## Customization

- Built-in explosion proof cable gland type explosion proof gland cable are not equipped on standard model
- 2 way cable entries
- Customized cable entry (3/4" NPT, M20×1.5, M25×1.5) available

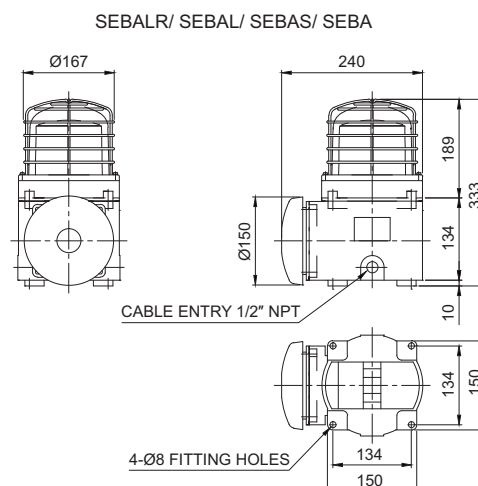
## Ordering Specification

<b>SEBA</b>	-	<b>220</b>	-	<b>R</b>
[Model number]		[Voltage]		[Color]

- |          |              |           |
|----------|--------------|-----------|
| • SEBALR | • 12-DC12V   | • R-Red   |
| • SEBAL  | • 24-DC24V   | • A-Amber |
| • SEBAS  | • 110-AC110V | • G-Green |
| • SEBA   | • 220-AC220V | • B-Blue  |

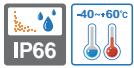
## Technical Diagram

(Units : mm)



# SSEL

## Explosion Proof LED Perimeter Light



SSEL

### SSEL Explosion Proof LED Perimeter Light

- Suitable for helideck and other dangerous areas that require a perimeter light
- Structure minimizing the projection of lens, can be protected from damage by external impact
- Product structure with 100mm height meets the IMD regulation condition
- Aluminum housing provides excellent durability
- Terminal for power wiring located inside of the housing
- Signal colors : ●R-Red ●A-Amber ●G-Green ●B-Blue
- Standard housing color : MUNSSELL No. 7.5BG 7/2
- Cable entry : 1/2" NPT
- Materials : Lens-Tempered glass, Housing-Al
- Certificates : KIMM, ABS
- Protection rating : Ex d IIC T6, IP66
- Ambient operating temperature :  $-40^{\circ}\text{C} \leq T_{\text{amb}} \leq +60^{\circ}\text{C}$

### Specifications

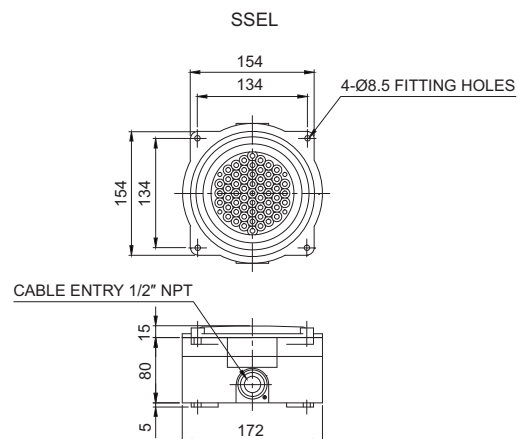
Model number	Voltage	Current	Certificates	Weight	Color
SSEL	DC12V	0.466A		2.54kg	<ul style="list-style-type: none"> <li>● R-Red</li> <li>● A-Amber</li> <li>● G-Green</li> <li>● B-Blue</li> </ul>
	DC24V	0.255A		2.54kg	
	AC110V	0.040A		2.54kg	
	AC220V	0.040A	2.54kg		

### Technical Diagram

(Units : mm)



SSEL Model applied in helideck



### Customization

- Explosion proof cable gland attached type available (Standard type does not provide explosion proof cable gland)
- Customized 2 way cable entries
- Customized cable entry(3/4" NPT, M20×1.5, M25×1.5) available

### Ordering Specification

<b>SSEL</b>	-	<b>220</b>	-	<b>R</b>
[Model number]		[Voltage]		[Color]
• SSEL		<ul style="list-style-type: none"> <li>• 12-DC12V</li> <li>• 24-DC24V</li> <li>• 110-AC110V</li> <li>• 220-AC220V</li> </ul>		<ul style="list-style-type: none"> <li>● R-Red</li> <li>● A-Amber</li> <li>● G-Green</li> <li>● B-Blue</li> </ul>

# SPNA

## Explosion Proof Electric Horn

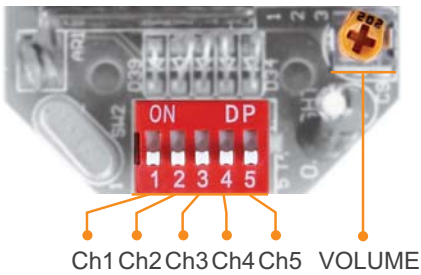


**SPNA**



### Sound Selection Instructions and Wiring

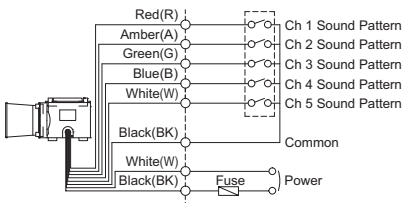
- Standard type : Select using the switch inside of the unit.  
When you turn on the dip switch for each channel, designated sound is being played.



- Customization : External contact(LC)
- In case of select sound between external contact and transistors, sound line is threading as customization when product released(LC).

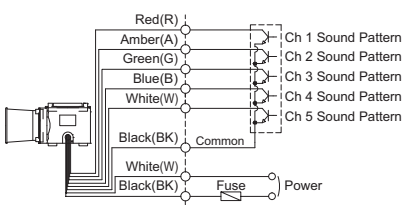
**SPNA-DC/AC**

EXTERNAL CONTACT



**SPNA-DC/AC**

EXTERNAL TRANSISTOR-NPN



## SPNA Max 118dB Explosion Proof Electric Horn

- Explosion proof electric horn
- Various sound tones can be selected ; warning sound, alarm, melody
- Aluminum housing provides excellent durability
- Equipped terminal box for power line wiring in housing
- Sound volume : Max 118dB at 1m(Volume adjustable)
- Standard housing color : MUNSSELL No. 7.5BG 7/2
- Cable entry : 1/2" NPT
- Materials : Housing-Al, Protection cage-SUS316L
- Certificates : IECEx, ATEX, NEPSI, KIMM, KOSHA, ABS, CCS, KR
- Protection rating :
  - IECEx - Ex d IIC T6 Gb, IP66
  - ATEX - Ex II 2G Ex d IIC T6, IP66
  - NEPSI, KIMM, KOSHA - Ex d IIC T6, IP66
- Ambient operating temperature :  $-40^{\circ}\text{C} \leq T_{\text{amb}} \leq +60^{\circ}\text{C}$



### Specifications

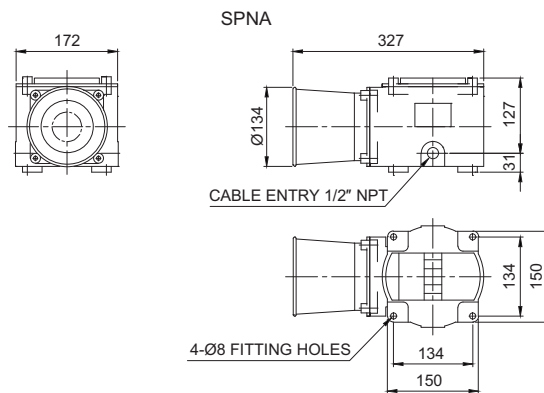
Model number	Voltage	Current	Sound Pattern and Volume	Certificate	Weight
SPNA	DC12V	2.211A	<ul style="list-style-type: none"> <li>WS-5 Warning sounds : 118dB</li> <li>WP-5 Special warning sounds : 118dB</li> <li>WM-5 Melodies : 118dB</li> <li>WA-5 Alarms : 115dB</li> <li>WV-5 Customizable voices : 113dB</li> </ul>	IECEx, ATEX	6.09kg
	DC24V	1.022A		NEPSI, KIMM	6.09kg
	AC110V	0.226A		KOSHA, ABS	6.44kg
	AC220V	0.113A		CCS, KR	6.44kg

\* Please refer to Page 90 for detailed information about selectable sound patterns.



### Technical Diagram

(Units : mm)



### Customization

- Built-in explosion proof cable gland type
- 2 way cable entries
- Customized cable entry (3/4" NPT, M20×1.5, M25×1.5) available
- ATEX compliant products
- IECEx compliant products

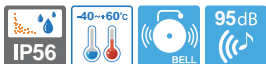


### Ordering Specification

SPNA	WM	220	LC
[Model number]	[Sound]	[Voltage]	[Sound selection]
<ul style="list-style-type: none"> <li>SPNA</li> </ul>	<ul style="list-style-type: none"> <li>WS-Warning sounds</li> <li>WP-Special warning sounds</li> <li>WM-Melodies</li> <li>WA-Alarms</li> <li>WV-Customizable sounds</li> </ul>	<ul style="list-style-type: none"> <li>12-DC12V</li> <li>24-DC24V</li> <li>110-AC110V</li> <li>220-AC220V</li> </ul>	<ul style="list-style-type: none"> <li>Standard</li> <li>Built-in switch</li> <li>LC</li> <li>External contact</li> </ul>

# SBE series

## Explosion Proof Alarm Bell



### SBE130/ SBE150 Max 95dB Explosion Proof Alarm Bell

- Explosion proof alarm bell for audible signal in dangerous area
- Adopts special solenoid bell structure, suitable in vessels which encounter serious vibration and impact or outdoor plants application
- Fully enclosed structure with protection rating of IP56
- Sound volume : Max 95dB at 1m
- Standard housing color : MUNSELL No. 7.5BG 7/2
- Cable entry : 1/2" NPT
- Materials : Housing-AI, Bell-AI
- Certificates : KIMM
- Protection rating: Ex d IIC T6, IP56
- Ambient operating temperature :  $-40^{\circ}\text{C} \leq T_{\text{amb}} \leq +60^{\circ}\text{C}$



**SBE130**



#### Specifications

Model number	Frequency	Volume	Bell diameter	Voltage	Current	Certificate	Weight
SBE130	400Hz	95dB	120mm	DC24V	0.044A		2.27kg
SBE150	600Hz		150mm	AC110V	0.044A		2.52kg
				AC220V	0.022A		



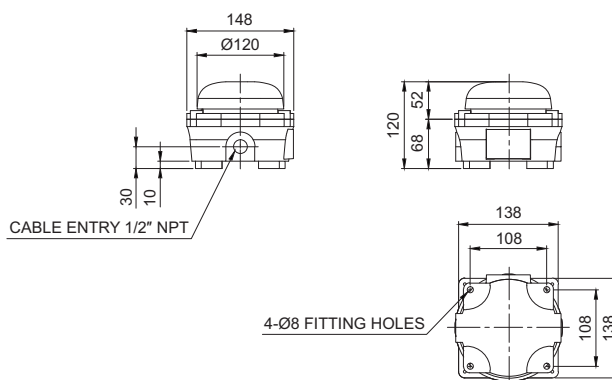
#### Technical Diagram

(Units : mm)

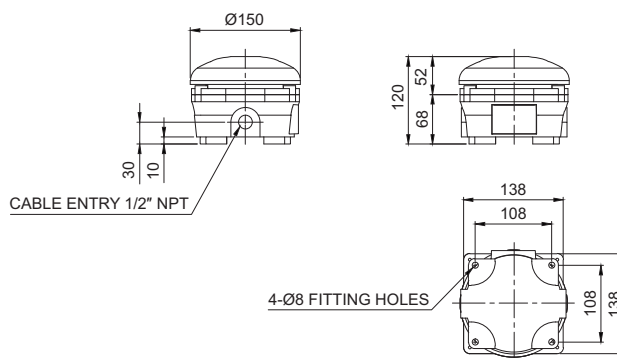


**SBE150**

SBE 130



SBE 150



#### Customization

- Built-in explosion proof cable gland type
- 2 way cable entries
- Customized cable entry (3/4" NPT, M20×1.5, M25×1.5) available



#### Ordering Specification

<b>SBE130</b>	-	<b>220</b>
[Model number]		[Voltage]
• SBE130 • SBE150		• 24-DC24V • 110-AC110V • 220-AC220V



# QMFL-300-Ex-24

## Non Sparking LED work light



### QMFL-300-Ex-24 Non Sparking LED work light

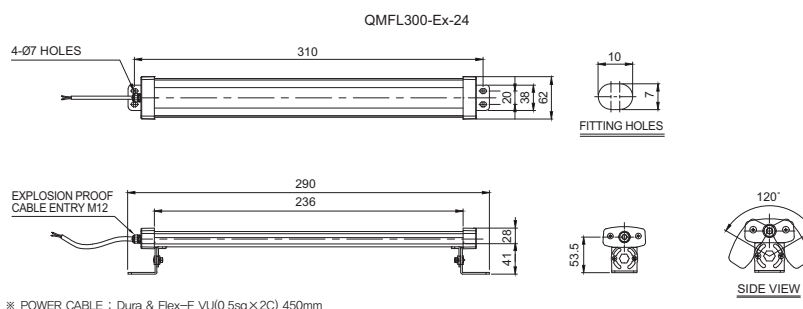
- Water, vibration and oil resistant LED work lights with non sparking ex-proof feature
- Special epoxy sealed structure provides excellent oil resistance
- Aluminum housing and tempered glass improves durability and stability in hazardous areas(Explosive zone)
- Can be used for Zone 2 application with explosion proof rating of nR
- Materials : Housing-AI, Side cover-AI,  
Lens-Tempered glass, Bracket-SPC1
- Certificates : KC(KGS)
- Protection rating: Ex nR II T6, IP67/ IP69K
- Ambient operating temperature :  $-40^{\circ}\text{C} \leq T_{\text{amb}} \leq +60^{\circ}\text{C}$

### Specifications

Optics Specifications		
Model		QMFL-300-Ex-24
Lens color		Translucent
Light color		Cool daylight
Color temperature		6,000-7,000K
Luminous flux	DC	510lm
Efficacy (lm/W)	DC	260Lux
Specifications		
Voltage		DC24V
Range of operation voltage		DC21.5V-26.5V
Current		0.410A
Power consumption		10W
Insulation resistance		Min. 100MΩ(500V DC mega ohm meter)
Withstanding voltage		DC : 500V AC, 60Hz, 1 minute
Operating temperature		$-40^{\circ}\text{C} - +60^{\circ}\text{C}$
Waterproof		IP67/ IP69K
Materials		Housing : AI, Side cover: AI, Lens: Tempered glass, Bracket: SPC-1
Certificates		
Weight(approx.)		0.79kg

### Technical Diagram

(Units : mm)



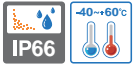
### Ordering Specification

<b>QMFL</b>	-	<b>300</b>	-	<b>Ex</b>	-	<b>24</b>
[Model number]		[Length]		[Ex-proof]		[Voltage]
• QMFL : Anti glare type		• 300 : 290mm		• Ex : Non sparking ex-proof type		• 24-DC24V

- !** Cautions in use of explosion proof LED work lights
- Contact structure of an explosion proof product must be a qualified part we provide. Please do not disassemble, assemble, modify or repair arbitrarily.

# QEAL1

## Explosion Proof Low Intensity LED Aviation Obstruction Light



### QEAL1 Explosion Proof Low Intensity LED Aviation Obstruction Light

- Low Intensity B type explosion proof aviation obstruction light
- Features high visibility from a distance with the direct LED light distribution system
- Cost savings enabled by using a long lasting LED light source which eliminates the need for maintenance
- Aluminum housing provides excellent durability
- Terminals located inside the housing for wiring
- Protection rating : Ex d IIC T4, IP66



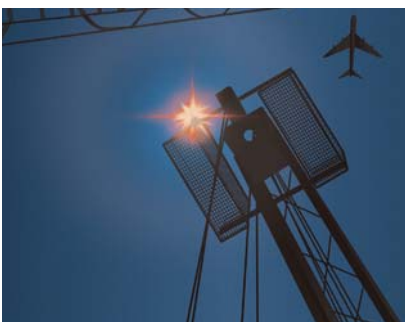
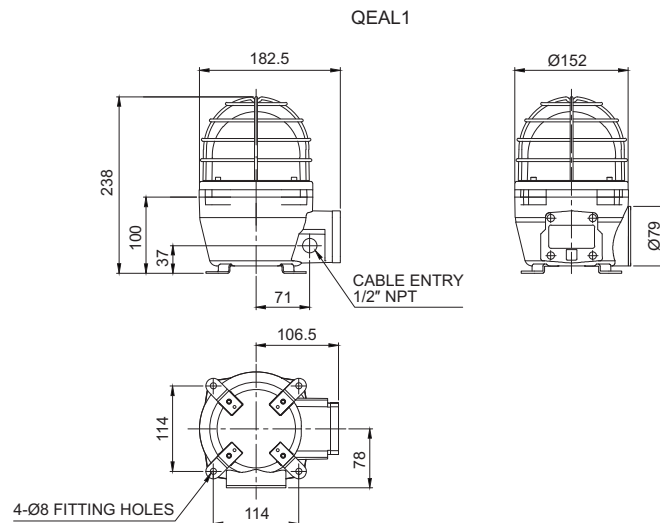
QEAL1

ICAO standard	Low intensity B type		
Light source	High intensity light emitting diodes(LED)		
Light color	Red		
Light function	Steady		
Voltage	DC12V, DC24V, AC110V, AC220V		
Power consumption	30W		
Standard housing color	Red	Cable entry	1/2" NPT
Materials	Lens-Tempered glass, Housing-Al, Lens ring- SUS316L, Protection cage-SUS316L, Heat sink-Al		
Protection rating	IP66	Ambient operating temperature	-40°C ≤ T <sub>amb</sub> ≤ +60°C
Certificate	KC(KOSHA)	Luminous intensity	50cd ±25%



### Technical Diagram

(Units : mm)



Explosion proof aviation obstruction lights are installed within hazardous areas on a surface that is more than 60m from the water surface or land such as towers and smokestacks.



### Customization

- Built-in explosion proof cable gland available(Standard type does not provide explosion proof cable gland)
- Customized 2 cable entries available
- Customized cable entry(M20×1.5) available
- Built-in darkness detecting sensor available

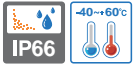


### Ordering Specification

<b>QEAL1</b>	-	<b>220</b>	-	<b>R</b>
[Model number]		[Voltage]		[Color]
• QEAL1		• 12-DC12V • 24-DC24V • 110-AC110V • 220-AC220V		• R-Red

# QEAL2

## Explosion Proof Medium Intensity LED Aviation Obstruction Light



**QEAL2**

### QEAL2 Explosion Proof Medium Intensity LED Aviation Obstruction Light

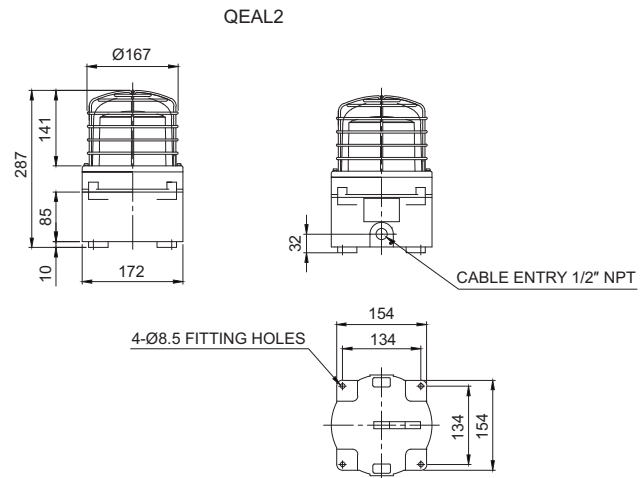
- Explosion proof medium intensity A and B type aviation obstruction light
- LED light distribution structure that directly radiates light to the user for excellent visibility
- Using semi-permanent lifetime of the LED light source decreases the light source replacement cost
- Excellent durability by adopting aluminum housing
- Built-in terminal for power line inside of housing
- Protection rating : Ex d IIC T4, IP66

ICAO standard	Medium intensity A and B type		
Light source	High intensity light emitting diodes(LED)		
Light color	Red, White		
Light function	Flashing		
Flashing rate	20-60 flashes/min		
Voltage	DC12V, DC24V, AC110V, AC220V		
Power consumption	130W		
Standard housing color	Red	Cable entry	1/2" NPT
Materials	Lens-Tempered glass, Housing-Al, Protection cage-SUS316L, Heat sink-Al		
Protection rating	IP66	Ambient operating temperature	-40°C ≤ T <sub>amb</sub> ≤ +60°C
Certificates	KC(KOSHA) compliant	Luminous intensity	2,000cd ± 25%



### Technical Diagram

(Units : mm)



### Customization

- Explosion proof cable gland attached type available (Standard type does not come with explosion proof cable gland)
- Customized 2 way cable entries
- Customized cable entry (3/4" NPT, M20×1.5, M25×1.5) available
- Built-in darkness detecting sensor available



### Ordering Specification

<b>QEAL2</b>	-	<b>A</b>	-	<b>24</b>
[Model number]		[Type]		[Voltage]
• QEAL2		• A-Medium intensity A Type : White, Flashing • B-Medium intensity B Type : Red, Flashing		• 12-DC12V • 24-DC24V • 110-AC110V • 220-AC220V

# Technical Certification

Qlight products are designed to meet strict quality and technical standards. Thus, the Qlight brand is widely recognized for its high quality and technical innovations from leading institutions around the world.



## ISO International Organization for Standardization

Qlight quality assurance systems have been certified by ISO by applying the ISO 9001:2008, KS Q ISO 9001:2009 regulation.



## IECEX International Explosion Proof Certification (IECEX)

Certified that Qlight's products are being manufactured and manage according to international standards.



## ATEX The European Regulatory Framework or Manufacture, Installation and Use of Equipment in Explosive Atmospheres

Qlight explosion proof products comply with ATEX Directives 94/9/EC.



## NEPSI National Supervision and Inspection Center for Explosion Protection and Safety of Instrumentation

Qlight's design and manufacturing system meets the People's Republic of China National explosion proof Standard. (Chinese Standard-GB3836/GB12476)



## KGS Korea Gas Safety Corporation

Approved from "Korea Gas Safety Corporation" that Qlight's design and manufacturing system meets the standard of KGS.



## KOSHA Korea Occupational Safety and Health Agency

Approved by the "Korea Occupational Safety and Health Agency" that Qlight's design and manufacturing system meets the standard of KOSHA.



## ABS American Bureau of Shipping

Qlight's design and quality assurance system has been certified by the American Bureau of Shipping.



## LR Lloyd's Register

Qlight design and quality assurance system has been certified from Lloyd's Register.



## CCS China Classification Society

Qlight design and quality assurance system has been certified by the China Classification Society.



## RMRS Russian Maritime Register of Shipping

Qlight design and quality assurance system has been certified from Russian Maritime Register of Shipping.



## KR Korean Register of Shipping

Qlight design and quality assurance system has been certified by the Korean Register of Shipping.



## CE European Commission

Qlight has been certified by the European Commission.



## UL Underwriters Laboratories

Qlight design and quality assurance system has been certified from UL to ensure the stability of consumption goods and to protect consumers.



## KC Korea Safety Certification

Qlight products are certified by KC for preventing accident caused by fire.



## CCC China Compulsory Certificate

Qlight has obtained CCC which guarantees safety, protection against fraud, environment, etc.



## ICAO International Civil Aviation Organization

Qlight guarantees our products satisfy the criteria regulated by the International Civil Aviation Organization (ICAO, FAA).



## E-mark Commission Directive Regarding Vehicle Industry

Qlight has obtained EU mark for approved vehicles and vehicle components sold into the EU (EEA : European Economic Area)



## RoHS Restriction of Hazardous Substances Directive

Qlight complies with the Restriction of Hazardous Substances Directive by limiting its use of hazardous materials.

# Light Source of Warning Light/ Signal Light

## SELECTION OF WARNING LIGHT

The selection of signaling devices will depend on the particular situation and environment.

- Whether the location of installation is dark or bright.
- Whether the signal transmission range should be short or long, or should have good visibility.
- Whether you need an economical but short lifetime product or upscale product with longer lifetime.
- Whether the environment is harsh with vibration and shock, or the environment is stable so that the life of the lights can be guaranteed.
- The selection of signaling device can be different depending on the situation and environment. The convenience and efficiency of maintenance should also be considered.

### ※ Factors to consider in signal selection

1. Purpose
2. Signal transmission
3. Environment
4. Budget
5. Ease of maintenance

## TYPE OF LIGHT SOURCE



### Bulb

Light bulb is a light source that uses temperature reflection generated by the current flowing through the light bulb filament (thin line of metal), tungsten wire coil filament is often used. The hot filament is protected from oxidation with a glass sphere injected with inert gas (Argon gas, etc.). Typical characteristics of the gas injected bulb is described below.

1. If the input voltage decreases more than 10% of the rated voltage, the bulb life increases four times than before, and the power consumption is reduced by 85%.
2. On the other hand, If input voltage is 10% higher than the rated voltage, the life of the bulb is shortened by about 30% and the power consumption increases about 16%, and the brightness is increased by about 40%. The standard service life of a normal bulb is about 1,000 - 1,500 hours.



### LED

The LED is a light emitting diode which emits light by injecting a current in the PN junction of the special semiconductor, semiconductors such as GaAs, GaP that Maximizes the electro-optical conversion effects are used. Like other semiconductors, over-voltage or ambient temperature affects the lifetime, but due to the absence of mechanical abrasion of the part, LED is shock/ vibration resistant so there is no need for proper seismic design. The standard service life of an LED is about 50,000 hours.



### Xenon Lamp

Xenon lamp is a flash type light source that emits bright light instantly by inserting high energy into the lamp. Compared with the steady type lamp, xenon lamps need a lot of input power instantly and a extremely large amount of light it is diffused.

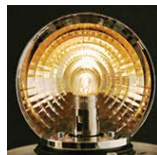
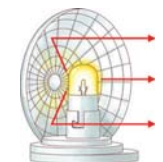
The lamp is filled with xenon(Xe) gas due to the convenience of the production(choice of materials), its use, xenon lamp was named after the xenon gas that it uses. xenon lamps are also resistant to vibration due to its mounting method. In addition, it is visible even in bright environments not only because the spectacle distribution of the visible light is close to the sunlight, it uses the same method as the strobe of the camera.

# Warning Light/ Indicator Light Operating Principle



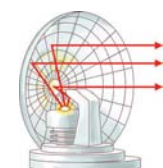
## Bulb Steady/ Flashing Type

- Highly diffusible light bulb that refracts light through a special lens and can be used in a steady or flashing state



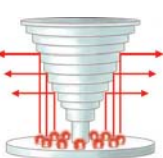
## Bulb Revolving Type

- By combining a highly diffusible light bulb and a reflector, light is reflected in a parallel beam with a rotating cycle
- Our bulb revolving model has a long lifetime enabled by using a high durability bulb and a power transfer system that minimizes noise and abrasion



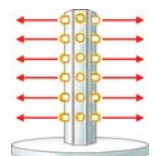
## LED Revolving Type

- The combination of an LED and a reflector creates a parallel light beam with a rotating cycle
- Our LED revolving model is patented for emitting light with the same level of uniformity and brightness compared to the bulb reflecting type



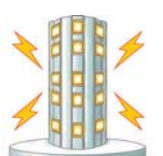
## LED Steady/ Flashing Type

- The indirect light distribution system uses a special structure to radiate a uniform light signal throughout the entire body of the lens by using a multi-stage reflector
- The direct light distribution system uses a high-intensity LED light and diffusion lens to transfer signal over a long distance. Qlight LED lights / flashing lights are equipped with two structures depending on the model type, Steady or Flashing Type



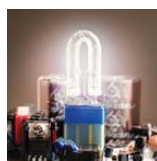
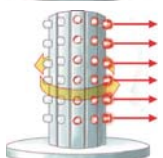
## LED Strobe-Type

- By shortening the LED flashing period and supplying the maximum current to the LED, it produces a flash effect just like the xenon lamp



## LED Simulated Revolving Type

- By uniformly arranging the LED lens in a 360 degree circumferential direction, it will produce a flash in a regular rotating sequence
- The visual effect looks just the same as the revolving model



## Xenon Lamp Strobe-Type

- The strobe type model uses a xenon lamp that instantly emits a high brightness light by supplying large energy
- Requires more power than other flashing type models, and the flash is brighter in comparison
- Has excellent vibration resistance compared to regular light bulbs but is not superior to LEDs
- Can spread strong light signals in all directions because of the light projecting structure

# Pre-recorded Sound Tone and Sound Combination Chart

## ■ 20 pre-recorded sound tones for standard type products

Sound Number	Sound Tone	Sound Number	Sound Tone
SND01	Fire.A-ANG	SND11	Piano Sonata
SND02	Emergency WA-U(Yelp)	SND12	Turkish March
SND03	Ambulance PI-PO(Hi-low)	SND13	Magic Flute
SND04	Abandon Alarm	SND14	Badinerie
SND05	Machinery Fault	SND15	Pine Apple Rag
SND06	High Expansion	SND16	Beep Intermittent
SND07	7 Short Pl. / 1 Long	SND17	Door Chime
SND08	Sweet Home	SND18	Phone Ring
SND09	For Elise	SND19	PI.PI.PI Short
SND10	Cuckoo's Waltz	SND20	Tripping Beat

## • Standard sound combination for WS/ WP type products

ON = 1 / OFF = 0

7 sounds per combination can be selected according to your preference.  
8 combinations are available.

No.	1	2	3	Ch1	Ch2	Ch3	Ch4	Ch5
1	1	0	0	SND01 Fire.A-ANG	SND02 Emergency WA-U	SND03 Ambulance PI-PO	SND05 Machinery Fault	SND06 High Expansion
2	0	1	0	SND01 Fire.A-ANG	SND04 Abandon Alarm	SND05 Machinery Fault	SND06 High Expansion	SND07 7 Short Pl. / 1 Long
3	1	1	0	SND01 Fire.A-ANG	SND02 Emergency WA-U	SND04 Abandon Alarm	SND05 Machinery Fault	SND06 High Expansion
4	0	0	1	SND01 Fire.A-ANG	SND03 Ambulance PI-PO	SND05 Machinery Fault	SND06 High Expansion	SND07 7 Short Pl. / 1 Long
5	1	0	1	SND02 Emergency WA-U	SND03 Ambulance PI-PO	SND04 Abandon Alarm	SND05 Machinery Fault	SND06 High Expansion
6	0	1	1	SND01 Fire.A-ANG	SND02 Emergency WA-U	SND03 Ambulance PI-PO	SND04 Abandon Alarm	SND07 7 Short Pl. / 1 Long
7	1	1	1	SND01 Fire.A-ANG	SND03 Ambulance PI-PO	SND04 Abandon Alarm	SND06 High Expansion	SND07 7 Short Pl. / 1 Long
8	0	0	0	SND02 Emergency WA-U	SND03 Ambulance PI-PO	SND04 Abandon Alarm	SND05 Machinery Fault	SND07 7 Short Pl. / 1 Long

※ You can select sound tones using the 3P switches located on the circuit board of the WS Type and WP Type products.

## • Standard sound combination for WM/ WA type products

ON = 1 / OFF = 0

13 sounds per combination can be selected according to your preference.  
8 combinations are available.

No.	1	2	3	Ch1	Ch2	Ch3	Ch4	Ch5
1	1	0	0	SND08 Sweet Home	SND09 For Elise	SND10 Cuckoo's Waltz	SND11 Piano Sonata	SND12 Turkish March
2	0	1	0	SND16 Beep Intermittent	SND17 Door Chime	SND18 Phone Ring	SND19 PI.PI.PI Short	SND20 Tripping Beat
3	1	1	0	SND08 Sweet Home	SND11 Piano Sonata	SND13 Magic Flute	SND17 Door Chime	SND19 PI.PI.PI Short
4	0	0	1	SND13 Magic Flute	SND14 Badinerie	SND15 Pine Apple Rag	SND08 Sweet Home	SND09 For Elise
5	1	0	1	SND10 Cuckoo's Waltz	SND11 Piano Sonata	SND17 Door Chime	SND18 Phone Ring	SND20 Tripping Beat
6	0	1	1	SND08 Sweet Home	SND12 Turkish March	SND16 Beep Intermittent	SND17 Door Chime	SND18 Phone Ring
7	1	1	1	SND08 Sweet Home	SND11 Piano Sonata	SND12 Turkish March	SND17 Door Chime	SND19 PI.PI.PI Short
8	0	0	0	SND11 Piano Sonata	SND12 Turkish March	SND13 Magic Flute	SND16 Beep Intermittent	SND18 Phone Ring

※ You can select sound tones using the 3P switches located on the circuit board of the WM Type and WA Type products.

# Pre-recorded Sound Tone and Sound Combination Chart

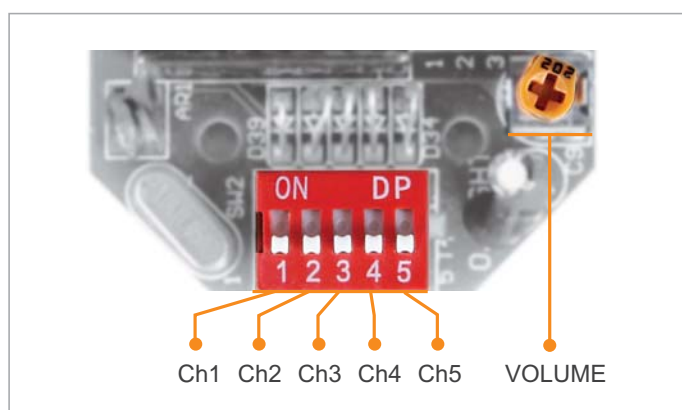
## ■ Sound tone combinations for standard type products

For standard type products, user can select from a variety of 5 pre-recorded sound combinations including 5 warning sounds, 5 special warning sounds, 5 melodies, 5 alarms, and 5 customizable sound.

	Sound Category	Channel	Sound Tone	Sound Combination #
WS	5 warning sounds	Ch1 Ch2 Ch3 Ch4 Ch5	Fire.A-ANG Emergency WA-U(Yelp) Ambulance PI-PO(Hi-low) Machinery Fault High Expansion	WS/ WP No.1
WP	5 special warning sounds	Ch1 Ch2 Ch3 Ch4 Ch5	Fire.A-ANG Abandon Alarm Machinery Fault High Expansion 7 Short Pl. / 1 Long	WS/ WP No.2
WM	5 melodies	Ch1 Ch2 Ch3 Ch4 Ch5	Sweet Home For Elise Cuckoo's Waltz Piano Sonata Turkish March	WM/ WA No.1
WA	5 alarms	Ch1 Ch2 Ch3 Ch4 Ch5	Beep Intermittent Door Chime Phone Ring PI.PI.PI Short Tripping Beat	WM/ WA No.2
WV	5 customizable sound	Ch1 Ch2 Ch3 Ch4 Ch5	<ol style="list-style-type: none"> <li>Voice messages are pre-recorded and provided from factory upon user's request</li> <li>Each channel has recording space for 16 sec</li> <li>5 channels available</li> <li>When only one channel is used, maximum recordable space is 80 sec</li> </ol>	-

※ Please refer to page 90 for detailed information about selectable sound patterns.

## ■ Sound Selection of Signal Sounds



Standard specification : Use internal switches

Turn on dip switches of each channel, designated sound will be played.

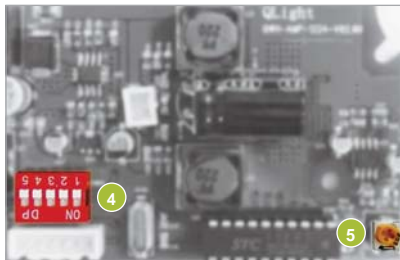


# Special Alarm Type Feature

## ■ How to set-up the special alarm type products

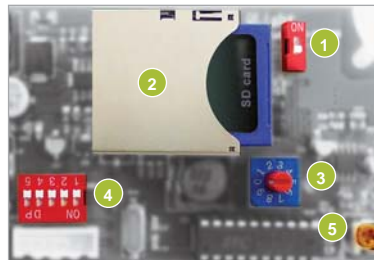
- A special alarm type products are classified into two models; basic model with special alarm and SDcard (MP3) model.
- The 2 models have 31 built-in sounds, which can be chosen and played by binary input method.
- When storing MP3 files on the SDcard (MP3) type models, you can select and play up to 31 sounds by using the binary input method. The bit input method can play 5 sound from #1 to #5, depending on the specifications given in the file name(For file specifications refer to Page 96.)
- Includes eight play mode settings. For example, when the continuous playback setting/ function is selected the warning message is played continuously for conditions that require frequent playback.

### ■ Built-in sound type model



- 1 - 2 N/A
- 4 Sound select switch
- 5 Volume

### ■ SDcard type model



- 1 Sound setting switch
- 2 MP3 playable SDcard
- 3 Play mode setting switch
- 4 Sound select switch
- 5 Volume

※ Built-in sound type model can select and play 31 sounds by using the sound selection switch.

## ■ SDcard(MP3) type product feature

### 1 SOUND setting switch

- If the switch is ON the SDcard (MP3) will be played, and if the switch is OFF the built-in sounds will be played.

### 2 SDcards

- The SDcard is a compact flash memory card for storing MP3 files.
- After saving the MP3 files in the SDcard with the specified format, insert the card into the SDcard slot and switch the sound setting switch to ON so the sounds can be played from the SDcard.

### 3 PLAY MODE setting switch

- PLAY MODE setting switch is used to choose the channel input method or select various playing modes. Refer to the table below for switch features.
- Switch #0 and #9 is not used.

1	Bit Input Mode	5 sounds can be played from the selected group (choose one group from six groups) Play sound only once (if using sequential signal input or pulse signal input)
2	Binary Input Mode	Up to 31 sounds available for each model. Plays sound only once (sequential signal input only)
3	Bit Input Hold Playback Mode	5 sounds can be played from the selected group (choose one group from six groups) The sound is repeated if the input signal is maintained. (sequential signal input only) If the STOP signal is inputted, the sound is turned off, and if the STOP signal is disabled the sound is played repeatedly
4	Binary Input Hold Playback Mode	Up to 31 sounds available for each model The sound is repeated if the input signal is maintained. (sequential signal input only) If the STOP signal is inputted, the sound is turned off, and if the STOP signal is disabled the sound is played repeatedly
5	Bit Input Sound Reduction Mode	5 sounds can be played from the selected group (choose one group from six groups) You can reduce the volume(15dB) by using a separate volume reduction signal line (same as volume reduction signal input)
6	Binary Input Sound Reduction Mode	Up to 31 sounds available for each model You can reduce the volume(15dB) by using a separate volume reduction signal line (same as volume reduction signal input)
7	Bit Input Sequence Memory Playback Mode	5 sounds can be played from the selected group (choose one group from six groups) If the sound is inputted in a order, it will remember the order and play each sound about 3 seconds. The last input channel is fully played (bit input mode only)
8	Test Mode	In test mode, Ch1 of group is automatically played back repeatedly. To end the test mode, switch back to the other modes.

### 4 Channel selection switch

- By using 5 channel selection switches, one can choose the appropriate sound source depending on the Binary input and Bit input.

### 5 VOLUME

- You can adjust the speakers sound output by using the volume dial.

# Sound Pattern and Combination for Special Alarm Type

## ■ Sound pattern for special alarm type

- Special alarm type product has 31 pre-recorded sound tones.
- Supports binary input mode. 5ch switch allows for 31 sound tones.

## • Composition of binary input mode

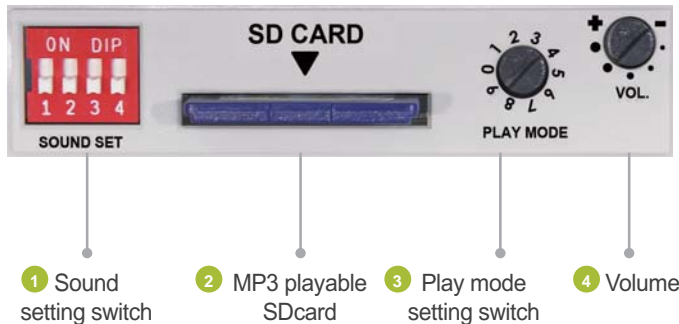
ON = 1 / OFF = 0						Left channel switch allows for choosing 31 sound tones. Channel switch will be substituted for an external wiring in case of LC type products.	
ON	Ch1	Ch2	Ch3	Ch4	Ch5		
OFF	<input type="checkbox"/>	<input type="checkbox"/>	<input type="checkbox"/>	<input type="checkbox"/>	<input type="checkbox"/>		
No.	1	2	3	4	5	Sound tone	Frequency
0	0	0	0	0	0	No sound	
1	0	0	0	0	1	Rel rel rel	730Hz-920Hz
2	0	0	0	1	0	Slow Ambulance PI-PO	820Hz-1.05kHz
3	0	0	0	1	1	Oit Oit warning sound	360Hz-1.56kHz
4	0	0	1	0	0	Emergency WA-U(Yelp)	770Hz-1.2kHz
5	0	0	1	0	1	Pi- buzzer	770Hz
6	0	0	1	1	0	7 Short PI. / 1 Long	715Hz
7	0	0	1	1	1	Pi o Pi o	940Hz-2.19kHz
8	0	1	0	0	0	Phone Ring	740Hz-910Hz
9	0	1	0	0	1	Pi- buzzer	600Hz
10	0	1	0	1	0	Pi pi pi short	420Hz
11	0	1	0	1	1	Di o Di o 2 tones buzzer	600Hz-1.14kHz
12	0	1	1	0	0	Oit Oit warning sound	500Hz-1.11kHz
13	0	1	1	0	1	Slow Ambulance PI-PO	380Hz-470Hz
14	0	1	1	1	0	Slow Di o Di o	680Hz-840Hz
15	0	1	1	1	1	Fast Li o li o	380Hz-470Hz
16	1	0	0	0	0	Fire.A-ANG	770Hz-1.11kHz
17	1	0	0	0	1	Fast Ambulance PI-PO	680Hz-840Hz
18	1	0	0	1	0	Slow Ambulance PI-PO	650Hz-840Hz
19	1	0	0	1	1	Ri ro ri ro warning sound	420Hz-470Hz
20	1	0	1	0	0	Repeat Di-o 3 times	680Hz-840Hz
21	1	0	1	0	1	Fire.A-ANG	500Hz-1kHz
22	1	0	1	1	0	Ambulance PI-PO	680Hz-840Hz
23	1	0	1	1	1	Slow Fire.A-ANG	480Hz-1.14kHz
24	1	1	0	0	0	Pi-pi- buzzer low frequency	690Hz
25	1	1	0	0	1	Pi-pi- buzzer high frequency	950Hz
26	1	1	0	1	0	Di-di- buzzer high frequency	800Hz
27	1	1	0	1	1	Di-di- buzzer low frequency	500Hz
28	1	1	1	0	0	Rising Po-ong	500Hz-1.2kHz
29	1	1	1	0	1	Fast Ambulance PI-PO	825Hz-1.07kHz
30	1	1	1	1	0	Rising frequency	150Hz-1kHz
31	1	1	1	1	1	Repeat A-ANG	1.4kHz-1.56kHz

# Multifunctional Type Feature

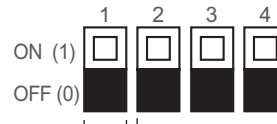
## ■ How to set up the multifunctional products(MP3)

- Multifunctional type products can play MP3 sounds by using an SDcard and can also play WS (5 Warning sounds), WP (5 special warning sounds 1<sup>st</sup> Group), WM (5 Melodies), WA (5 Alarms), WO (5 special warning sounds 2<sup>nd</sup> Group), and WN (5 special warning sounds 3<sup>rd</sup> Group) when not using a SDcard.
- Includes seven different functions. For example, it is able to playback the message continuously with the continuous playback function for warning message that needs to be repeated often.

## ■ Function setting



### 1 Sound setting switch



#### Group Choice in Bit Input Mode

- 001 : WS (5 Warning sounds)
- 010 : WP (5 special warning sounds 1<sup>st</sup> Group)
- 011 : WM (5 Melodies)
- 100 : WA (5 Alarms)
- 101 : WO (5 special warning sounds 2<sup>nd</sup> Group)
- 110 : WN (5 special warning sounds 3<sup>rd</sup> Group)

#### Sound Selection

- 0 : Built-in sound
- 1 : SDcard(MP3)

- #1 switch from the sound setting switch is for selecting Built-in sound/ SDcard
- #2 – #4 switch is for selecting a group of sound incase you have selected bit input mode

### 2 SDcards

- The SDcard is a compact flash memory card for storing MP3 files.
- After saving the MP3 files in the SDcard with the specified format, insert the card into the SDcard slot and switch the sound setting switch to ON so the product will be able to play sounds from the SDcard.

### 3 PLAY MODE setting switch

- PLAY MODE setting switch is used to choose the channel input method or select various play modes. Refer to the table below for switch features.
- Switch #0 and #9 is not used.

1	Bit Input Mode	5 sounds can be played from the selected group (choose one group from six groups) Play sound only once (if using sequential signal input or pulse signal input)
2	Binary Input Mode	Up to 30 sounds available for each model. Plays sound only once (sequential signal input only)
3	Bit Input Hold Playback Mode	5 sounds can be played from the selected group (choose one group from six groups) The sound is repeated if the input signal is maintained. (sequential signal input only) If the STOP signal is inputted, the sound is turned off, and if the STOP signal is disabled the sound is played repeatedly
4	Binary Input Hold Playback Mode	Up to 30 sounds available for each model The sound is repeated if the input signal is maintained. (sequential signal input only) If the STOP signal is inputted, the sound is turned off, and if the STOP signal is disabled the sound is played repeatedly
5	Bit Input Sound Reduction Mode	5 sounds can be played from the selected group (choose one group from six groups) You can reduce the volume(15dB) by using a separate volume reduction signal line (same as volume reduction signal input)
6	Binary Input Sound Reduction Mode	Up to 30 sounds available for each model You can reduce the volume(15dB) by using a separate volume reduction signal line (same as volume reduction signal input)
7	Bit Input Sequence Memory Playback Mode	5 sounds can be played from the selected group (choose one group from six groups) If the sound is inputted in a order, it will remember the order and play each sound about 3 seconds . The last input channel is fully played (bit input mode only)
8	Test Mode	In test mode, Ch1 of group is automatically played back repeatedly. To end the test mode, switch back to the other modes.

### 4 VOLUME

- You can adjust the speakers sound output by using the volume dial.

# Sound Pattern and Combination for Multifunctional Product

## ■ Sound patterns for multifunctional products

- Multifunctional product has 30 pre-recorded sound tones.
- 30 sound tones in binary input mode supported. Bit input mode has 5 sound tones within 1 group among 6 groups.

## • Bit input mode's sound tone combinations

		ON = 1 / OFF = 0														
		Ch1	Ch2	Ch3	Ch4	Ch5	Left channel switch allows to select 5 tons individually within designated group. (For group selection, please refer to page 94 "How to set-up the multifunctional products") Channel switch will be substituted for external wiring in case of LC type products.									
ON		<input type="checkbox"/>	<input type="checkbox"/>	<input type="checkbox"/>	<input type="checkbox"/>	<input type="checkbox"/>										
OFF		<input type="checkbox"/>	<input type="checkbox"/>	<input type="checkbox"/>	<input type="checkbox"/>	<input type="checkbox"/>										
Sound	Ch	Sound Tone					Sound	Ch	Sound Tone							
WS	5 Warning Sounds	Ch1	Fire.A-ANG(560Hz-1.5kHz)					WA	5 Alarms	Ch1	Beep Intermittent					
		Ch2	Emergency WA-U(Yelp)(600Hz-1.5kHz)							Ch2	Door Chime					
		Ch3	Ambulance PI-PO(Hi-low)(450Hz-900Hz)							Ch3	Phone Ring					
		Ch4	Machinery Fault(820Hz)							Ch4	PI.PI.PI Short					
		Ch5	High Expansion(1kHz)							Ch5	Tripping Beat					
WP	5 Special Warning Sounds (1 <sup>st</sup> Group)	Ch1	Fire.A-ANG(560Hz-1.5kHz)					WO	5 Special Warning Sounds (2 <sup>nd</sup> Group)	Ch1	Rel rel rel(730Hz-920Hz)					
		Ch2	Abandon Alarm(820Hz)							Ch2	Slow Ambulance PI-PO(820Hz-1.05kHz)					
		Ch3	Machinery Fault(820Hz)							Ch3	Wye yong Wye yong(770Hz-1.2kHz)					
		Ch4	High Expansion(1kHz)							Ch4	Phone ring 2(740Hz-910Hz)					
		Ch5	7 Short Pl. / 1 Long(1kHz)							Ch5	Fire.A-ANG(770Hz-1.11kHz)					
WM	5 Melodies	Ch1	Sweet Home					WN	5 Special Warning Sounds (3 <sup>rd</sup> Group)	Ch1	Oit Oit(500Hz-1.11kHz)					
		Ch2	For Elise							Ch2	Pi o Pi o(940Hz-2.19kHz)					
		Ch3	Cuckoo's Waltz							Ch3	Slow Di o Di o(680Hz-840Hz)					
		Ch4	Piano Sonata							Ch4	Li long Li ling(420Hz-470Hz)					
		Ch5	Turkish March							Ch5	911 Siren(500Hz-1kHz)					

## • Binary input mode's sound tone combinations

		ON = 1 / OFF = 0														
		Ch1	Ch2	Ch3	Ch4	Ch5	Left channel switch allows the user to select from 30 available sound tones. Channel switch will be substituted for external wiring in case of LC type products.									
ON		<input type="checkbox"/>	<input type="checkbox"/>	<input type="checkbox"/>	<input type="checkbox"/>	<input type="checkbox"/>										
OFF		<input type="checkbox"/>	<input type="checkbox"/>	<input type="checkbox"/>	<input type="checkbox"/>	<input type="checkbox"/>										
No.	1	2	3	4	5	Sound tone	Frequency									
0	0	0	0	0	0	No sound										
1	0	0	0	0	1	Fire.A-ANG	560Hz-1.5kHz									
2	0	0	0	1	0	Emergency WA-U(Yelp)	600Hz-1.5kHz									
3	0	0	0	1	1	Ambulance PI-PO(Hi-low)	450Hz-900Hz									
4	0	0	1	0	0	Pi-ik Pi-ik	820Hz									
5	0	0	1	0	1	Machinery Fault	820Hz									
6	0	0	1	1	0	High Expansion	1kHz									
7	0	0	1	1	1	Alarm	1kHz									
8	0	1	0	0	0	Sweet Home	-									
9	0	1	0	0	1	For Elise	-									
10	0	1	0	1	0	Cuckoo's Waltz	-									
11	0	1	0	1	1	Piano Sonata	-									
12	0	1	1	0	0	Turkish March	-									
13	0	1	1	0	1	Magic Flute	-									
14	0	1	1	1	0	Badinerie	-									
15	0	1	1	1	1	Pineapple Rag	-									
16	1	0	0	0	0	Beep Intermittent	-									
17	1	0	0	0	1	Door Chime	-									
18	1	0	0	1	0	Phone Ring	-									
19	1	0	0	1	1	PI.PI.PI Short	-									
20	1	0	1	0	0	Tripping Beat	-									
21	1	0	1	0	1	Rel rel rel	730Hz-920Hz									
22	1	0	1	1	0	Slow Ambulance PI-PO	820Hz-1.05kHz									
23	1	0	1	1	1	Wye yong Wye yong	770Hz-1.2kHz									
24	1	1	0	0	0	Phone ring 2	740Hz-910Hz									
25	1	1	0	0	1	Fire.A-ANG	770Hz-1.11kHz									
26	1	1	0	1	0	Oit Oit	500Hz-1.11kHz									
27	1	1	0	1	1	Pi o Pi o	940Hz-2.19kHz									
28	1	1	1	0	0	Slow Di o Di o	680Hz-840Hz									
29	1	1	1	0	1	Li long Li ling	420Hz-470Hz									
30	1	1	1	1	0	911 Siren	150Hz-1kHz									

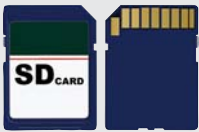
# How to Use a MP3 Type Product

MP3-type models have 30 or 31 built-in alarm sounds and the users can play their voice messages or music files(MP3). You can choose two methods for playing up to 31 sounds with the binary input method. While the bit input method can only play 5 sounds from #1 to #5.

## ■ What is a MP3?

- MP3 is a audio compression technology(Audio layer-3) design by MPEG (Motion Picture Experts Group)  
MP3 (MPEG-1 Audio Layer-3) is a standard technology and format for compressing a sound sequence into a very small file while preserving the original level of sound quality when it is played.
- Extension of the MP3 file can be found as “\*.mp3”, and any voice message, alarm message, and music can be played and saved as MP3 files.

## ■ What is a SDcard?



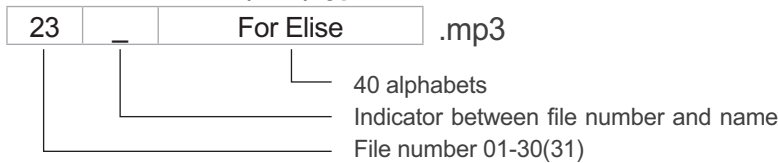
SD memory card is a compact flash memory card for storing various data such as MP3s or document files, Models with MP3 features can save voice messages or alarm messages in the SDcard.

※ SDcard sold separately.

## Saving a MP3 file

- MP3 file can be saved and played in accordance with the standards specified by filename.
- Using binary input method according to the specifications given in the file name, a SDcard which is used in special alarm type models(MP3) can save up to 31 sounds, multifunctional type models can save and play up to 30 sounds.
- Using bit input method according to the specifications given in the file name, you can select and play up to five sounds from the MP3 file.

### User-defined sound(MP3) type



- [Example]
- 01\_Fire alarm.mp3
  - 02\_Emergency alarm.mp3
  - 03\_For Elise.mp3
  - ⋮
  - 30\_Cuckoo Waltz.mp3

## Binary input and Bit input method

Special alarm type models and multifunctional type models are divided into Binary input method or Bit input method depending on the source selection method.

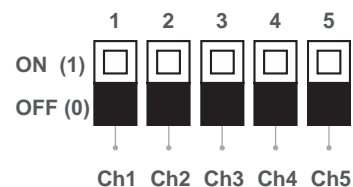
### ■ Binary input

ON = 1 / OFF = 0

	1	2	3	4	5
ON	<input type="checkbox"/>	<input type="checkbox"/>	<input type="checkbox"/>	<input type="checkbox"/>	<input type="checkbox"/>
OFF	<input type="checkbox"/>	<input type="checkbox"/>	<input type="checkbox"/>	<input type="checkbox"/>	<input type="checkbox"/>
No.	1	2	3	4	5
0	0	0	0	0	0
1	0	0	0	0	1
2	0	0	0	1	0
⋮	⋮	⋮	⋮	⋮	⋮
31	1	1	1	1	1

You can only show 2 numbers with 1 switch “0”, “1”. With 5 switches you can have 31 combinations. Selecting one sound from 5 switches is the Binary input method.

### ■ Bit input



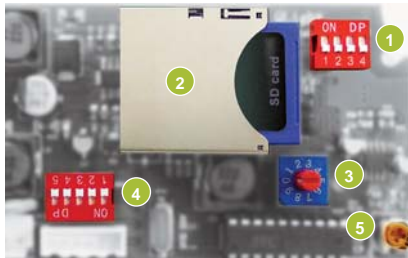
The Bit input method only recognizes one of the 5 switches at a time. This method doesn’t support two inputs at once. The number of combinations is small, but it is much more convenient to remember the channel number.

# How to Use a MP3 Type Product

## ■ MP3 supported model basic description

- MP3 supported products can play 30-31 built-in sounds or MP3 files saved in an SDcard.
- Binary input method can play up to 30 - 31 sounds, and Bit input method can play 5 sounds in accordance with the standards specified by filename.
- Can choose and play 5 sounds from #1 to #5.

<Switch select type>

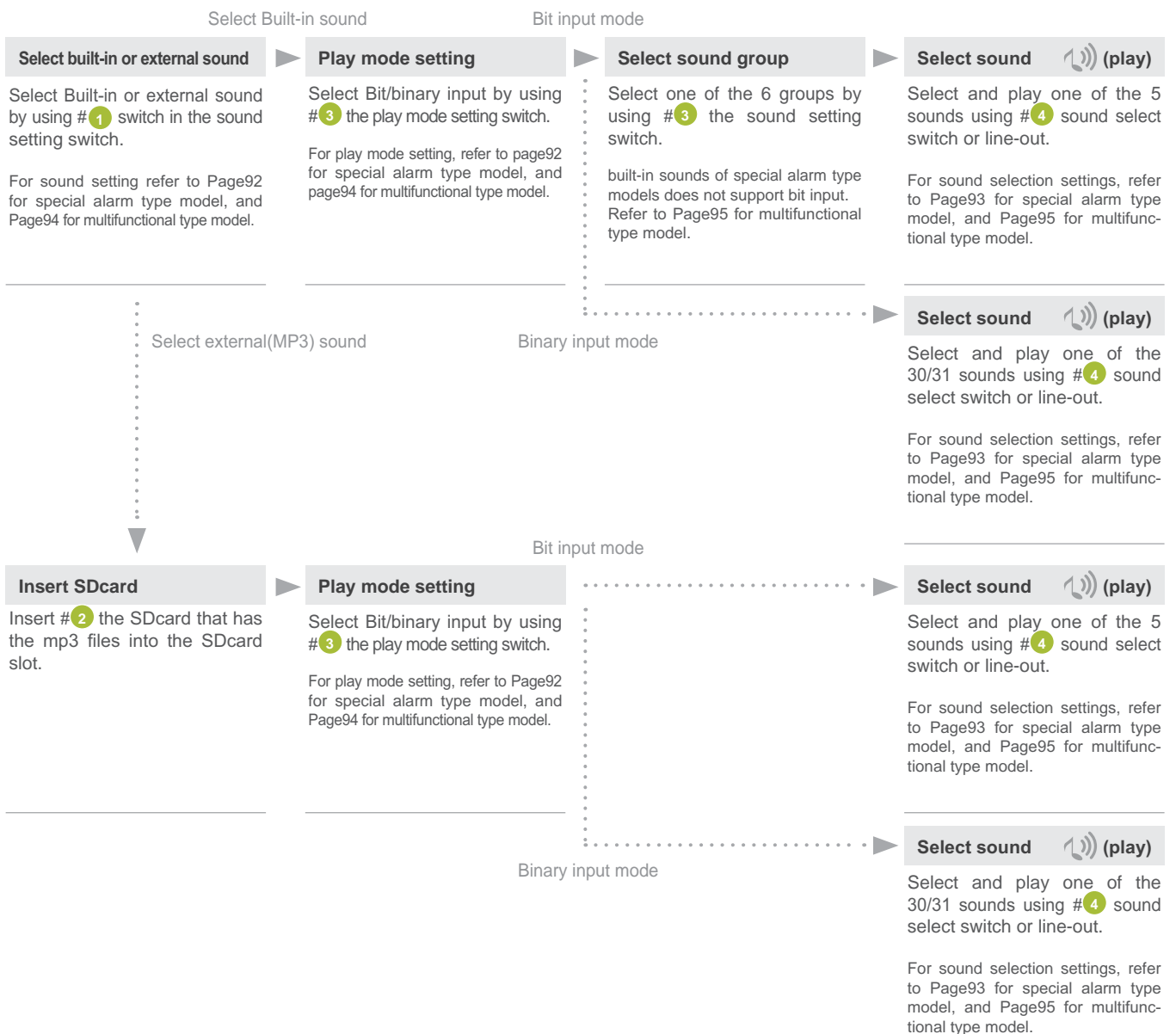


<Line-out type>



- 1 Sound setting switch
- 2 MP3 playable SDcard
- 3 Play mode setting switch
- 4 Sound select switch
- 5 Volume

## ■ How to set-up a MP3 type product



# Icon Description

This catalogue helps users quickly identify the product's specifications and features by using several types of icons. If you understand the concept for each icon, you will find it easy to understand the catalogue information.

## Light Source and Operating Mode Icons

Icon	Operating Mode	Icon	Operating Mode
	Bulb steady type		Bulb steady/flashing type
	Bulb revolving type		LED revolving type
	LED steady type		LED steady/ flashing type
	LED simulated revolving type		LED strobe type
	Xenon lamp strobe type		

## Acoustic Signal Icons

Icon	Operating Mode	Icon	Operating Mode
	Buzzer		Speaker
	Horn		Bell
	Motor siren		MP3
	Decibel		

## Specifications Icons

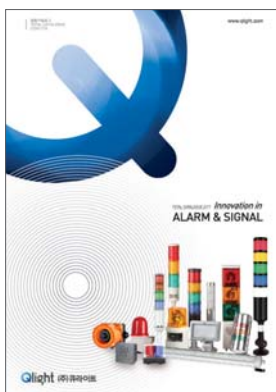
Icon	Operating Mode	Icon	Operating Mode
	Magnet type		Ambient operating temperature
	NPN type transistor		PNP type transistor
	IP rating		Wireless Network

## Detail Icons

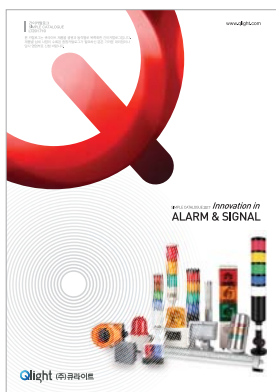
Icon	Operating Mode	Icon	Operating Mode
	Common specification		External view drawing
	Wiring		Mounting
	User specifications		Model selection

# Qlight Catalogue Introduction

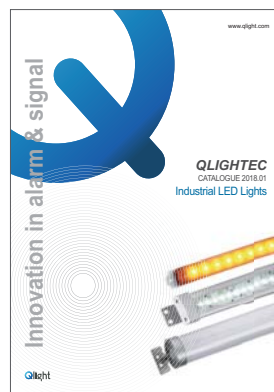
Qlight produces a wide variety of product categories which offers the customer the ability to select the suitable device for their application needs and environments. There are warning/signal lights, electric signal horns, signal tower lights, warning light bars, PC control tower lights, industrial LED lights, aviation obstruction lights, and limit switches.



Total Catalogue



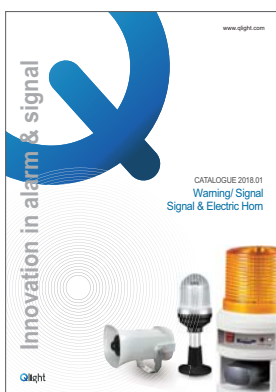
Simple Catalogue



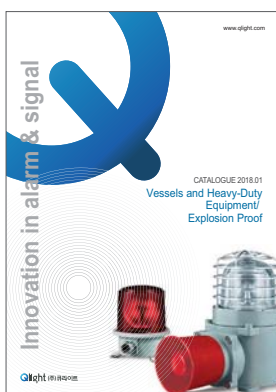
Industrial LED Lights



Signal Tower Lights



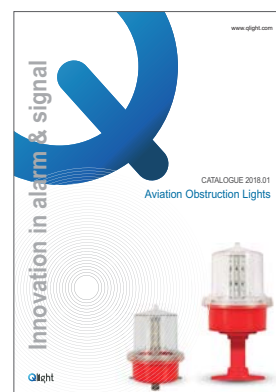
Warning/ Signal/ Signal & Electric Horn



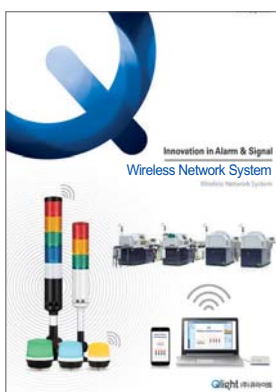
Vessels and Heavy-Duty Equipment/ Explosion Proof



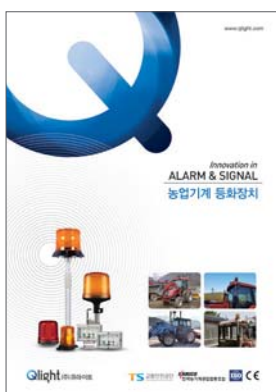
Warning Light Bar



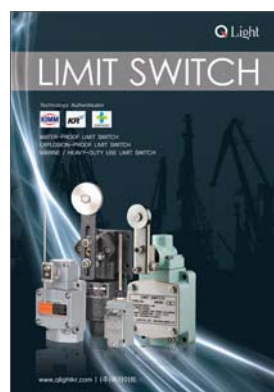
Aviation Obstruction Lights



Wireless Network System



Agriculture Machine Warning Light



Limit Switch



For Steel Manufacturing Facilities





FOR YOUR  
SAFETY

Specification and dimensions listed in this catalogue are subject to change without prior notice for product quality improvement. The newest product information is available on our web site. ([www.qlight.com](http://www.qlight.com)) Please read the Instruction Manual attached to the product carefully before installation and use.

## ***Qlight Catalogue Introduction***

*Signal Tower Lights*

*Warning/ Signal & Electric Horn*

*Vessels and Heavy-Duty & Equipment/ Explosion Proof*

*Warning Light Bar*

*Aviation Obstruction Lights*

*Industrial LED Lights*

*Qlight Co., Ltd. [www.qlight.com](http://www.qlight.com) | [qlightkr@qlight.com](mailto:qlightkr@qlight.com)*

Head Office | A-412, 579, Gyeongin-ro, Guro-gu, Seoul, Korea Tel. +82-80-328-2222 Fax : +82-2-2679-6154

Factory | 185-25, Mukbang-Ro, Sangdong-Myeon, Gimhae-si, Gyeongsangnamdo, Korea Tel. +82-80-328-1111

Qlight Public Relations & Marketing Team Office | Nakdong-daero, Sasang-gu, Busan, Korea(Eomgung-Dong) Tel : +82-51-245-0017

---

*Qlight USA, Inc. [www.qlight.com](http://www.qlight.com) [www.qlightusa.com](http://www.qlightusa.com) | [sales@qlightusa.com](mailto:sales@qlightusa.com)*

3003 North First Street, Suite #341, San Jose, CA 95134 USA Tel. +1.408.519.5740 Fax. +1.408.519.5739

---

*SHANGHAI Qlight Electronic Co., Ltd. [www.qlight.com](http://www.qlight.com) [www.qlightcn.com](http://www.qlightcn.com) | [qlightcn@qlight.com](mailto:qlightcn@qlight.com)*

China Factory/ Shanghai Sales Office | #19, Nanda Road, Baoshan Area, Shanghai, China Tel. +86.21.6651.7100 Fax. +86.21.6315.3929



WARNING LIGHT | ELECTRONIC HORN | SIGNAL TOWER LIGHT | EMERGENCY LIGHT BAR | LED OBSTRUCTION LIGHT | LED WORK LIGHT