

**Das Winkelgetriebe**



ATEK Antriebsstechnik Willi Glapiak GmbH • Siemensstrasse 47 • D-25462 Rellingen, Hamburg

## ATEK ANTRIEBSTECHNIK – HIGH-QUALITY GEARBOXES PRODUCED IN GERMANY

As a medium-sized gearbox manufacturer, today we look back on over 75 years of tradition. For more than 30 years, everything for us has “revolved” around right-angle force transmission. Today, as from the beginning, we are driven by one thing: solving your drive-engineering problems – technically competent, economical, reliable and fast! Developed and assembled in the Hamburg metropolitan region and distributed throughout the world, our range of products comprising single-stage angular gearboxes has allowed us to secure a large market share which has been steadily growing for the past number of years.

**In a technically competent, economical, reliable and fast manner!**

ATEK offers a modularly structured product range that primarily comprises bevel gearboxes and worm gearboxes as well as the precision gearboxes which can be combined with modern servo-motors. ATEK’s angular gearboxes have a compact design, cover an extensive performance spectrum and enable a variety of possible step-up/down ratios.

Some of the ATEK standard series can be supplied within a matter of hours. Be it for application-specific drive train solutions for special machine or series products for general machine construction: The ATEK modular system leaves nothing to be desired. Our customers benefit from well-engineered drive train solutions, top-quality products and processes, established know-how and competitive value for money.

### Certification

ATEK Antriebsstechnik is one of the first companies to be certified in accordance with the new ISO 9001:2015 standard since 2016.

Visit our website [www.atek.de](http://www.atek.de)



## SERVO PRECISION GEARBOXES

Special servo precision gearboxes have been developed for the requirements of highly dynamic applications. The proven ATEK bevel gearbox, hypoid gearbox, miniature bevel gearboxes and worm gearbox series form the basis for them. The combination of a large number of motor flanges and an insertable, zero-play coupling enables the adaptation to all servo-motors.

Thanks to the modular system, a later replacement of the motor flange and the coupling half on the motor side is also very easy.

### Highly dynamic servo drive solutions

Servo precision gearboxes are highly precise and highly dynamic servo drive solutions. These high-performance gearboxes cope with today's highly diverse requirements in every respect. The gearboxes can be produced with a circumferential backlash of up to 1 angular minute. It is not without reason that they are also used worldwide in the automotive industry, amongst other sectors.



## ANGULAR GEARBOXES

The ATEX modular system leaves nothing to be desired. Our customers benefit from well-engineered drive train solutions, top-quality products and processes, established know-how and competitive value for money.

*“A gearbox is a machine element used to change movement parameters. Sometimes, the change of a force or a torque plays the decisive role. The movement to be changed is often a rotary movement.” (Wikipedia)*

ATEK offers the following types of angular gearboxes that deflect the direction of a rotary movement by 90° and, if desired, also change the rotational speed and the torque.

### Miniature bevel gearboxes

L Miniature

### Bevel gearboxes

V With free shaft ends  
 VS The through-shaft is fast-running  
 VL Prepared for the mounting of an IEC standard motor

### Stainless-steel gearboxes

HDV Hygiene-design gearboxes

### Worm gearboxes

S With free shaft ends  
 SL Prepared for the mounting of an IEC standard motor

### Hypoid gearboxes

H With free shaft ends

### Gearbox configurator

The 3D CAD models have access to all important information such as dimensions, performances, torques, radial forces, inertia moments and other gearbox properties. Furthermore, drawings, data sheets and models are filed in all common exchange formats and languages on the ATEK homepage [www.atek.de](http://www.atek.de)



## CUSTOM MADE SOLUTIONS

### Top-quality right-angle force transmission

In addition to our standard range of products, ATEK develops and manufactures special gearbox designs according to the customer's requirements. Amongst other fields, they are used in the food industry, handling, automation, logistics sectors as well as in offshore facilities for instance.

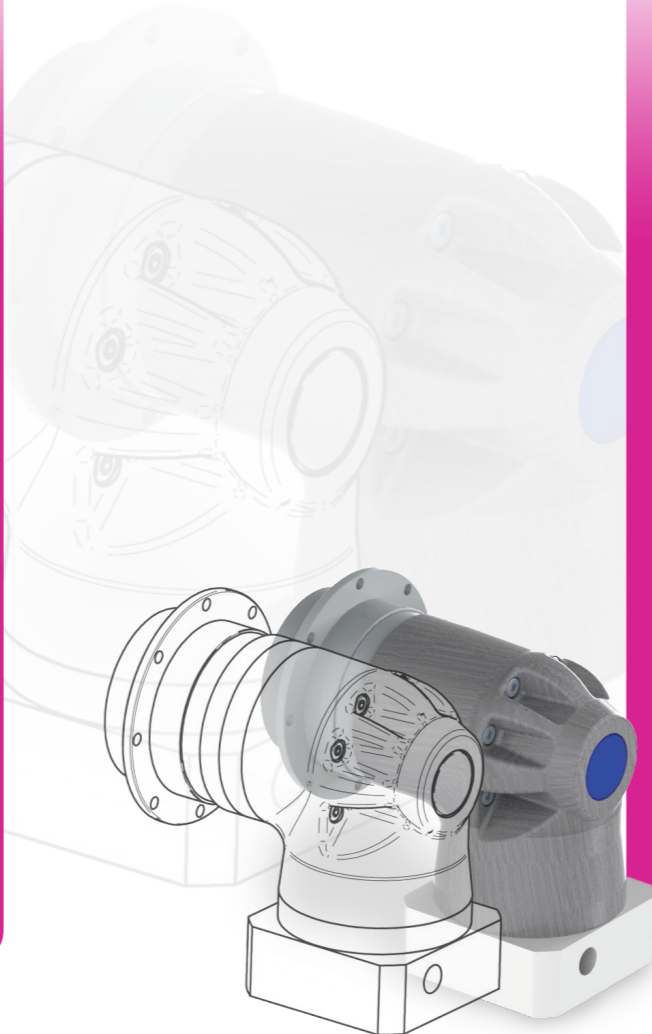
Not only is the long-standing experience gathered over 35 years of gearbox experience incorporated into the whitepaper gearbox development; it is also supported by the latest CAD-based calculation and testing software. The entire development process is carried out in close and direct cooperation with our customers. The customer requirements in terms of performance, torque, installation space, the desired gearbox individual costs and the environmental conditions are the primary focus during the development phase. The development time can be kept to a minimum thanks to comprehensive simulation options in the field of gearbox development and it goes without saying that you can utilise this service even when purchasing one unit. Please ask us!

### Data collection for your desired gearbox

Please use our data collection questionnaire, available on our homepage [www.atek.de](http://www.atek.de), for the collection of the most important technical data of the individually developed gearbox. Our team of specialists would be pleased to assist you in completing the questionnaire and will discuss the special requirements with you in a personal dialogue.



DATA COLLECTION FOR YOUR DESIRED GEARBOX



DEVELOPMENT



DESIRED GEARBOX

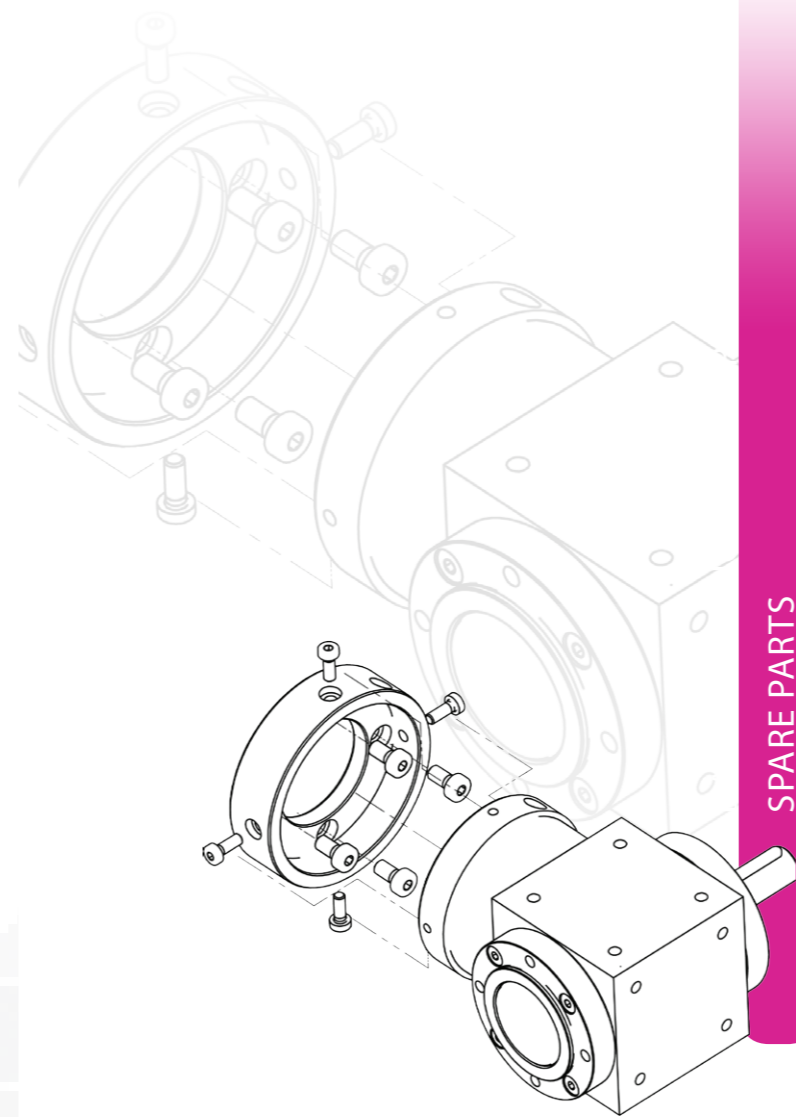
## AFTER SALES

We are well-known for comprehensive services intended for the entire product range. Do you need spare parts for ATEK gearboxes or have any questions relating to the repair of gearboxes or the warranty on our products? Our service department will personally take care of your concern. Please get in touch with us, either by phone or directly via our **livechat** which is available at [www.attek.de](http://www.attek.de)

We assure our customers a fast and almost constant availability. ATEK sets benchmarks for reliability, dynamics and high precision – this also applies to our service as well.

### Our service department will help!

Our service department will help you with technical assistance regarding ATEK gearboxes, prepare spare parts offers for you and examine gearboxes. The department will prepare cost estimates for repairs and alterations and support you in handling complaints. Stating the serial number is extremely important for support in processing queries and orders for spare parts and repairs.



SPARE PARTS



CONSULTANCY



ON-SITE SERVICE

# WE ARE MORE THAN HAPPY TO ADVISE YOU ON-SITE

## ATEK worldwide



**Australia**  
Mecco Mech. Comp. PTY Ltd.  
193 Orange Valley Road  
6076 Kalamunda  
Tel.: +61 89 2910000  
Fax: +61 89 2910066  
mecccomps@gmail.com  
www.mecco.com.au



**Belgium**  
Bege Aandrijftechniek BVBA  
Puttestraat 73  
2940 Stabroek  
Tel.: +32 36 051605  
Fax: +32 36 053605  
bege@bege.be  
www.bege.be



**Denmark**  
Jens S. TRANSMISSIONER A/S  
Hørskættæn 7  
DK- 2630 Taastrup  
Tel.: +45 70 13 83 33  
Fax: +45/43 54 43 92  
gear@jens-s.dk  
www.jens-s.dk



**United Kingdom**  
Marshward Power  
Transmission Ltd.  
Unit 9, Warwick House  
Business Park  
Southam  
CV47 2PT Warwickshire  
Tel.: + 44 1926 815480  
Fax: + 44 1926 817116  
info@marshward.com  
www.marshward.com



**France**  
Comp'Aut.Sarl  
78 rue Carnot  
74000 Annecy  
Tel.: +33 45057 0791  
Fax: +33 45057 2145  
contact@compaut.com  
www.compaut.com



**India**  
Power Ace Eng. Co.  
17AF, New Empire Ind. Estate  
Kondivita Lane, J. B. Nagar  
Andheri(e), Mumbai  
400059 Mumbai  
Tel.: +91 22 28205862  
Fax: +91 22 28202478  
response@poweraceindia.com  
www.poweraceindia.com



**Italy**  
SETEC S.p.A.  
Via Mappano 17  
10071 Borgaro Torinese Torino  
Tel.: +39 011 4518611  
Fax: +39 011 4704891  
info.to@setec-group.it  
www.setec-group.it



**Netherlands**  
Bege Aandrijftechniek B.V.  
Anton Philipsweg 30  
2171 KX Sassenheim  
Tel.: +31 252 220220  
Fax: +31 252 218484  
bege@bege.nl  
www.bege.nl



**Norway**  
Jens S. TRANSMISSIONER A/S  
Enebakkveien 117  
0680 Oslo NO Norway  
Tel.: +47 23 06 04 00  
Fax: +47 23 06 04 01  
post@jens-s.no  
www.jens-s.no



**Poland**  
DEMERO SP.j.  
Ul. Graniczna 145  
54-530 Wroclaw  
Tel.: +48 71 3882300  
Fax: +48 71 3882311  
biuro@demero.pl  
www.demero.pl



**Russia**  
Stankoservice on Sokol  
ul. Tschasowaya 28, Building 4  
125315 Moscow  
Tel.: +7 49 52251339  
Fax: +7 49 52251339  
info@stserv.ru  
www.stserv.ru



**Sweden**  
JENS S. Transmissions AB  
Koppargatan 9  
60223 Norrköping/Sweden  
Tel.: +46 11 19 80 00  
Fax: +46 11 19 80 54  
www.jens-s.se  
info@jens-s.se



**Switzerland**  
Flohr Industrietechnik GmbH  
Zilistude 164  
5465 Mellikon  
Tel.: + 41 56 2670810  
Fax: + 41 56 2670825  
info@flohr-industrietechnik.ch  
www.flohr-industrietechnik.ch



**South Africa**  
Remag (Pty) Ltd.  
Midway Park  
770 Gallagher Avenue  
1685 Midrand  
Tel.: +27 11 3155672  
Fax: +27 11 3155570  
eric.rehme@remag.co.za



**Spain**  
Amel Tecnica Industrial S.L.  
Pol. Ind. Can Bernades-Subirá  
C/ Berguedá 15 Nave 17 B  
08130 Santa Perpétua de la Mogoda  
Tel.: +34 937 162424  
Fax: +34 937 162458  
xcomas@ameltecnica.com



**South Korea**  
Alpha Tech Co., LTD  
222-26, Nae-dong, Ojung-Ku  
421-806 Bucheon-City, Kyunggi-Do  
Tel.: +82 32 6243848  
Fax: +82 32 6243849  
tklee64@hanafos.com



**Czech Republic**  
RAVEO s.r.o.  
Trida Tomase Bati 1851  
76502 Otrokovice  
Tel.: +42 05 77663875  
Fax: +42 05 77663875  
info@raveo.cz  
www.raveo.cz



**Turkey**  
Servo Kontrol Ltd. Sti  
Perpa Ticaret Merkezi B Blok Kat: 11  
No: 1609  
80270 Okmeydani/Istanbul  
Tel.: +90 212 320 30 80  
Fax: +90 212 320 30 81  
info@servokontrol.com  
www.servokontrol.com



**USA**  
GAM Gear, L.L.C.  
901 E. Business Center Drive  
60056 Mount Prospect, Illinois  
Tel.: + 1 - 847 / 649 2500  
Fax: + 1 - 847 / 649 2501  
info@gamweb.com  
www.gamweb.com



**People's Republic of China**  
SEW-Eurodrive (Tianjin) Co Ltd.  
No. 78, 13th Avenue Tianjin Economic  
Technological Development Area (TEDA)  
Tianjin 300457  
Tel.: +86 22 59836655  
Fax: +86 22 59836651  
info@sew-eurodrive.com.cn  
www.sew-eurodrive.com.cn



**Beijing Genju Science and  
Technology Development Co Ltd.**  
Jin Gu Mansions, No. 55,  
Tanbo Center, Room 206 No. 30  
Xingshikou Road, Haidian District,  
Beijing 100195  
Tel.: +86 10 88459170  
Fax: +86 10 88454543  
info@genju.com.cn  
www.genju.com.cn



**Singapore, Malaysia,  
Indonesia**  
SM Component  
196 Pandan Loop #05-06  
Pantech Industrial Complex  
Singapore 128384  
Tel.: +65 6569 1110  
Fax: +65 6569 2220  
sales@sm-component.com

# ATEK

ANTRIEBSTECHNIK

Das Winkelgetriebe

**ATEK Antriebstechnik Willi Glapiak GmbH**  
Siemensstrasse 47 • D-25462 Rellingen  
Tel.: +49 - (0)4101 7953-0  
E-Mail: atek@atek.de • Web: www.atek.de

**Sales** Tel.: +49 - (0)4101 7953-22/23/42  
Fax: +49 - (0)4101 7953-21  
E-Mail: sales@atek.de

**Purchasing/Materials Management** Tel.: +49 - (0)4101 7953-11  
Fax: +49 - (0)4101 7953-21  
E-Mail: purchase@atek.de