

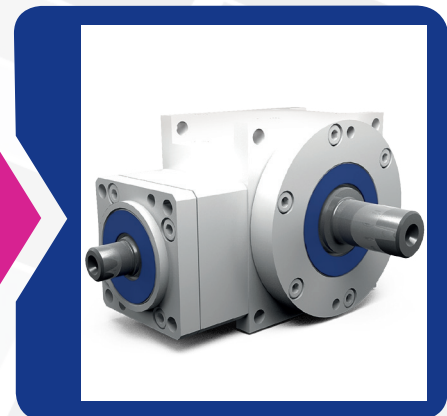
ATEK

ANTRIEBSTECHNIK

Das Winkelgetriebe



Performance-optimized
hypoid gearboxes



Miniature
bevel gearboxes

Bevel
gearboxes

Hygiene-design
gearboxes

Hypoid
gearboxes

Worm
gearboxes

Gearbox
motors

Servo gearboxes
(precision gearboxes)

Special
gearboxes

ATEX
gearboxes

Gear sets

Service



ATEK Antriebstechnik

As a medium-sized gearbox manufacturer, today we look back on over 75 years of tradition. For more than 30 years, everything for us has “revolved” around right-angle power transmission.

Today, as from the beginning, we are driven by one thing: solving your drive-engineering problems. – technically competent, economical, reliable and fast!

Developed and assembled in the Hamburg metropolitan region and distributed throughout the world, our range of products comprising single-stage angular gearboxes has allowed us to secure a large market share which has been steadily growing for the past number of years.

The modularly structured product range primarily comprises bevel gears and worm gears and the servo series which can be combined with modern servo-motors. Our angular gearboxes stand out thanks to their compact build, extensive performance spectrum and variety of feasible step-up/down ratios. Thanks to our enormous warehouse we can often supply our standard series within a matter of hours. Be it for application-specific drive train solutions for special machine

construction or series products for general machine construction: The ATEK modular system leaves nothing to be desired.

Our customers benefit from well-engineered drive train solutions, top-quality products and processes, established know-how and very reasonable value for money.

In addition to a worldwide distribution network which guarantees competent, on-site support, round-the-clock contact and communication can also be established over the Internet. A gearbox configurator is available via our www.atek.de homepage, from which customers and interested parties can download the 3D CAD data of all ATEK bevel gearboxes, worm gearboxes and servo gearboxes, thus allowing them to be more effectively integrated into the construction and supply process.



1939
Formation of Willi Glapiak turnery in Hamburg

1978
Change of legal form into a GmbH (limited liability company)

1983
Merger of Willi Glapiak GmbH and ATEK Ingenieurbüro f. Antriebstechnik to today's ATEK Antriebstechnik Willi Glapiak GmbH and transfer of the company seat to Rellingen

1985
Focussing on single-stage bevel gearboxes and worm gearboxes

Our motto is Vmax... and not only with regard to the rotational speed of our products

Drive

Our hallmark:
Excellent ability to supply

Efficient logistics:
High parts availability at our loca-
tions and those of our partners

Fast and almost constant
reachability

Know-how

Realisation of our high quality
standards through selected,
highly specialised suppliers and
a qualified and experienced staff
team

Our processes are subject to
continuous monitoring

Our management system is
certified

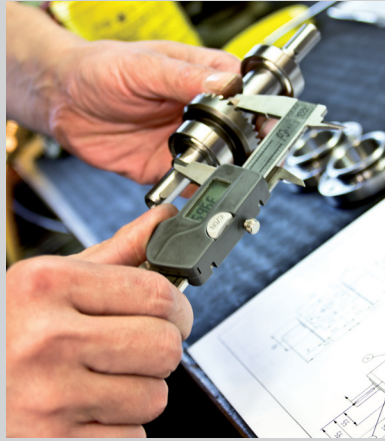
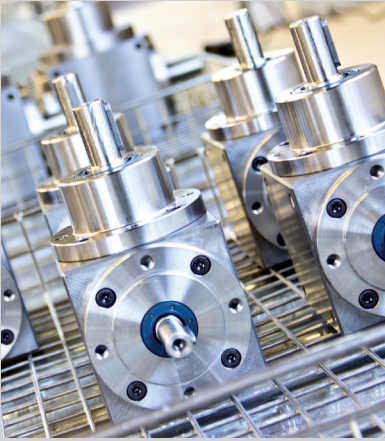
Performance

Whether standard or special
manufacture, maintenance or
advisory service...

Your drive-engineering
task definition
is our challenge!

We set benchmarks as
to reliability, dynamics,
and high precision

We stand for long-standing
partnerships, loyalty
and confidence



1995
Inclusion of servo gearboxes
(Ad-Servo series) into the product range

1997
Relocation to Prisdorf /
Expansion of production
capacities

Since 2002
Internationalisation / Development /
extension of foreign markets

2009
Inclusion of miniature
gearboxes (L series) into
the product range

2012
Inclusion of hypoid
gears (HC series) into
the product range

2013
Relocation to Rellingen
with renewed expansion
of production capacities