

Product Overview

# gapp automation

**ARUBIX**  
Company

controls  
drives  
visualisation  
measurement  
linear motion  
motors & gearboxes  
power transmission  
light & sound

**MOTION CONTROL & AUTOMATION**

[info@gapp.co.uk](mailto:info@gapp.co.uk)



**Gapp Automation Ltd**

Units 5 & 6 Kempston Court, Kempston Hardwick, Bedford, MK43 9PQ  
tel: 01234 924324 [info@gapp.co.uk](mailto:info@gapp.co.uk) [www.gapp.co.uk](http://www.gapp.co.uk)

[www.gapp.co.uk](http://www.gapp.co.uk)

Gapp Automation, part of the Rubix group, is a specialist automation and drives supplier, providing cost-effective and leading edge automation solutions. Our team consists of experienced automation experts, with extensive knowledge in a variety of industry sectors and applications. To discuss your requirements please contact our team who will be pleased to assist.



## Servo Drives & Motors

Compact design, 50W to 15kW, speed, torque, position control, RS232, RS485, CANopen, EtherCAT, STO safety, sequencing & motion control functionality, programmable I/O, high resolution incremental or absolute encoder



## Frequency Inverters

50W to 630kW, V/F, sensorless vector or field oriented control, built-in PLC, STO safety, DC bus sharing, user friendly software, HVAC, lift & elevator versions, induction or permanent magnet motors, optional I/O extension cards



## Control Solutions

Extensive range of PLC, controllers & modules, high speed, free programming software, multiple fieldbus protocols, up to 128 axes of motion, Trio Basic programming, IEC61131, CodeSys, EtherNet switches, gateways, memory cards, fieldbus components & periphery



## HMIs, Touch Panels & Panel PCs

Wide range, high resolution TFT colour, 4.3" up to 21.5", all major drivers available, simple HMI programming software, IEC 61131-3, rugged design, vibration resistant, multi-touch, fanless, IP65, stainless steel, configurable

# Automation Solutions



## DC Power Supplies

Din-rail, chassis mount, open frame, 5V, 12V, 24V, 48V, Wide Input Voltage, 7.5W - 960W, 0.42A-40A, 200% power boost, high efficiency, wide temperature range, conformal coating, CE, UL, CSA, ATEX, redundancy modules,



## Light & Sound Solutions

Signal towers, beacons, explosion proof warning lights, light bars, work lights, electronic horns, sirens, high IP protection, modular design, USB, Ethernet & Wifi interface, robust construction, bulb, LED, xenon illumination.



## Compact Geared Motors

AC induction, DC brushed, miniature DC, shaded pole, <1W up to 400W, 1ph, 3ph, 110V, 230V, 400V, 12V, 24V, 48V, ratios 3:1 to > 200:1, compact design, long life, fixed or variable speed, braked motors, up to IP65



## BLDC Geared Motors

Brushless DC, wide speed range, excellent speed holding, constant torque, 1ph/230VAC or 24VDC, in-line helical or parallel hollow bore, ratio 5:1 to 200:1, IP65 protection, flying lead, compact design, long life.



## Industrial Gearboxes

Worm, helical, bevel helical, shaft mounted, bevel, wide range of sizes & ratios, motors up to 315kW, frequency inverter operation, high efficiency, accessories including brakes, encoders, tachos, PTO, PTC, PT100

# Automation Solutions



## Rotary Encoders

Incremental, absolute, single/multi-turn, 28mm-115mm body, 5mm-44mm shaft, solid or hollow bore, up to IP67, stainless steel, voltage, current, HTL, TTL, PP, field-bus options, bearingless, kit encoders, programmable, customised designs.



## Position Indicators

Mechanical, electronic, control knobs, analogue handwheels, clamping plates, hollow bores 6mm - 30mm, stainless steel shaft, dual counting, plastic or die-cast, 3 to 5 digits, LCD display, field-bus options, status LEDs, programmable



## Automatic Format Adjustment

Suitable for automatic format adjustment, tool alignment, value control, guide positioning, compact housing, clamp output Bore, 3.2Nm To 14Nm, field-bus options, absolute encoder, display, simple mounting



## Mechanical Linear Sensing

Compact, heavy duty, measuring range 0.5m to 15m, current, voltage, encoder, field-bus options, wide temperature range, unique hydraulic cylinder version, long life, low maintenance, linear potentiometers & transducers.



## Magnetic Sensing

Linear or rotary, incremental, absolute, quasi absolute, high repeat accuracy, linear measurement down to 1µm, measuring length up to 100m, rotary measurement up to 200,000 ppr, SSI, RS485, keypad displays, accessories

# Automation Solutions



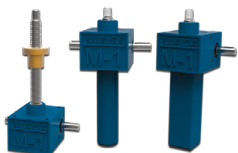
## Planetary Gearboxes

Modular design, low backlash, in-line, right angle, robot flange, hollow output bore, interchangeable with other brands, motor flanges to suit all major manufacturers, stainless steel, corrosion resistant coatings, customised designs



## Linear Actuators

In-line, right angle, parallel motor mount design, trapezoidal or ballscrew spindles, DC, AC or Servo motor, stainless steel & special coatings for harsh environments, standard or customised designs, wide range of feedback options



## Screwjacks

Translating spindle or travelling nut, ballscrew or trapezoidal spindles, 2.5kN up to 500kN, modular design, multiple mounting positions, material & coatings for harsh environments, manual or motorised, AC, DC or Servo motor.



## Torque Limiters

Friction, ball, roller & pneumatic designs, wide range of sizes, bores & torque ratings, compact design, corrosion resistant & stainless steel variants, maintenance free models, single or multi-phase automatic re-engagement, backlash free.



## Shaft Couplings & Spacer Shafts

Jaw, disc, bellow, gear, chain & rigid coupling designs, wide range of torque ranges and bore diameters, backlash free, stainless steel & corrosion resistant versions, low inertia, torsionally rigid, maintenance free, statically or dynamically balanced.

# RUBIX

Keeping the wheels of industry turning - right across Europe

**DID YOU KNOW?**

RUBIX are Europe's largest supplier of industrial maintenance, repair and overhaul (MRO) products and services

## MOTION CONTROL & AUTOMATION

**KJN ALUMINIUM PROFILE**

ARUBIX Company

 [aluminium-profile.co.uk](http://aluminium-profile.co.uk)



Established in 1997 and renowned for its vast range of Aluminium Profiles and Components, KJN guide customers from concept to installation.

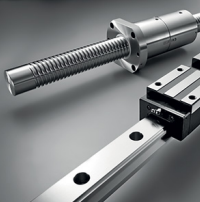
**Products Include:**

Aluminium profile, work benches, work stations, machine frames and guarding.



ARUBIX Company

 [matara.com](http://matara.com)



Established in 1995, Matara is known for its extensive range of standard and bespoke Linear Motion, Automation and Pneumatic components.

**Products Include:**

Linear Rail, ballscrews, actuators, pneumatic cylinders, pneumatic control components.

[www.gapp.co.uk](http://www.gapp.co.uk)