

- Robust & corrosion resistant housing
- For linear measurements with pinion + rack or metric wheel
- Movable shaft absorbs mounting misalignments
- Absolute version on request



ICS

ENVIRONMENTAL SPECIFICATIONS

Shock:	250 g, 6 ms acc. to CEI EN 60068-2-27
Vibrations:	10 g, 5-2000 Hz acc. to CEI EN 60068-2-6
Operating temperature range:	-25°C +85°C (-13°F +185°F)
Storage temperature range:	-25°C +85°C (-13°F +185°F) (98% R.H.without condensation)
Protection:	IP67, connector IP65

MECHANICAL SPECIFICATIONS

Dimensions:	see drawing
Shaft hollow:	Ø 12 mm
Shaft loading (axial and radial):	100 N max.
Shaft rotational speed:	6000 rpm max.
Starting torque at 20°C:	≤ 3 Ncm (typical)
Bearings life:	400 x 10 ⁹ rev. min. (10 ⁹ rev. min. with 20 N shaft loading max)
Weight:	~ 1,2 kg (42,3 oz)

ELECTRICAL SPECIFICATIONS

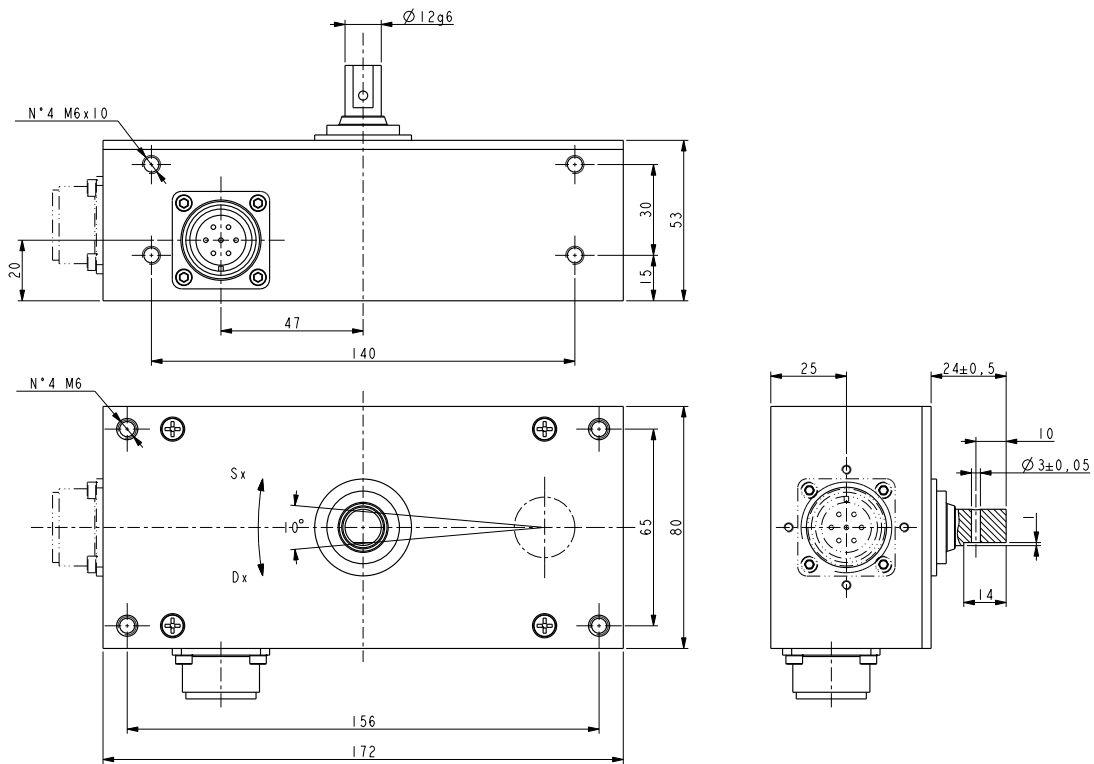
Resolution (PPR):	4-5-6-8-10-12-15-16-20-24-25-30-36-40-50-60-70-80 100-120-125-127-150-160-200-216-230-240-250-254 256-300-314-360-375-400-471-500-512-600-720-750 900-1000-1024-1068-1200-1250-1270-1400-1440 1500-1800-2000-2048-2250-2400-2500
Pulses/mm:	to be result of pinion and rack ratio
Counting frequency:	60 kHz max.
Output circuit:	NPN, PNP, Push-Pull, Line Driver, Universal circuit
Power supply:	+5V±5%, +10V +30V,+5V +30V
Consumption:	70 mA (typical)
Output current (each channel):	40 mA max.
Protection:	against inversion of polarity and short-circuit
EMC:	electro-magnetic immunity, according to EN 61000-4-2 EN 61000-4-4

MATERIALS

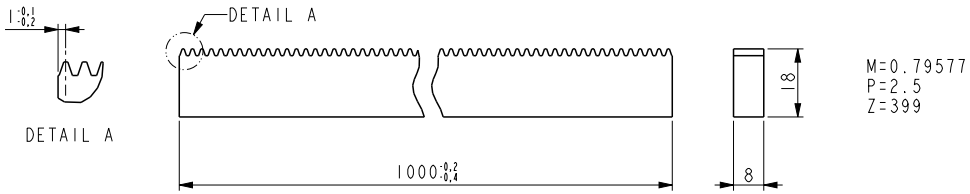
Housing:	anticorodal, UNI EN AW-6082
Bearings:	ABEC 5
Shaft:	stainless steel, non-magnetic - UNI EN 4305

ACCESSORIES

E7MLS:	7 pin MIL mating connector
E10MLS:	10 pin MIL mating connector
PF4260:	Z40 pinion
LKM-1224:	M0,79 rack



ICS



LKM-1224 (rack)

Order code

ICS	-	XX ⓐ	-	XXXXX ⓑ	-	XXX ⓒ	-	XX ⓓ	-	XX ⓔ	-	XX ⓕ	-	X ⓖ	/Sxxx ⓗ
-----	---	---------	---	------------	---	----------	---	---------	---	---------	---	---------	---	--------	------------

<p>ⓐ OUTPUT CIRCUITS / SUPPLY VOLTAGE</p> <p>N2 = NPN o.c., +10V÷ +30V P2 = PNP o.c., +10V÷ +30V Y2 = Push Pull, +10V÷ +30V L1 = Line Driver (RS422), +5V±5% H4 = PP/LD universal circuit, +5V÷ +30V</p> <p>ⓑ RESOLUTION (PPR)</p> <p>See electrical specifications</p>	<p>ⓒ OUTPUT SIGNALS / CONNECTIONS</p> <p>BND = AB, MIL 7 pin plug BCP = AB /AB, MIL 10 pin plug (only radial) ZND = ABO, MIL 7 pin plug ZCP = ABO /ABO, MIL 10 pin plug (only radial)</p> <p>ⓓ SHAFT DIAMETER</p> <p>12 = 12 mm</p> <p>ⓔ PROTECTION</p> <p>J = IP67</p>	<p>ⓕ PROTECTION / OPERATING TEMP.</p> <p>JT = IP65, -25°C +85°C (-13°F +185°F)</p> <p>ⓖ SHAFT REST POSITION</p> <p>DX = right (see drawing) SX = left (see drawing)</p> <p>ⓗ CONNECTION POSITION</p> <p>A = axial R = radial (with BCP, ZCP)</p>
---	--	--

① CUSTOM VERSION

Document release	Date	Description
1.0	04.08.2025	New order code