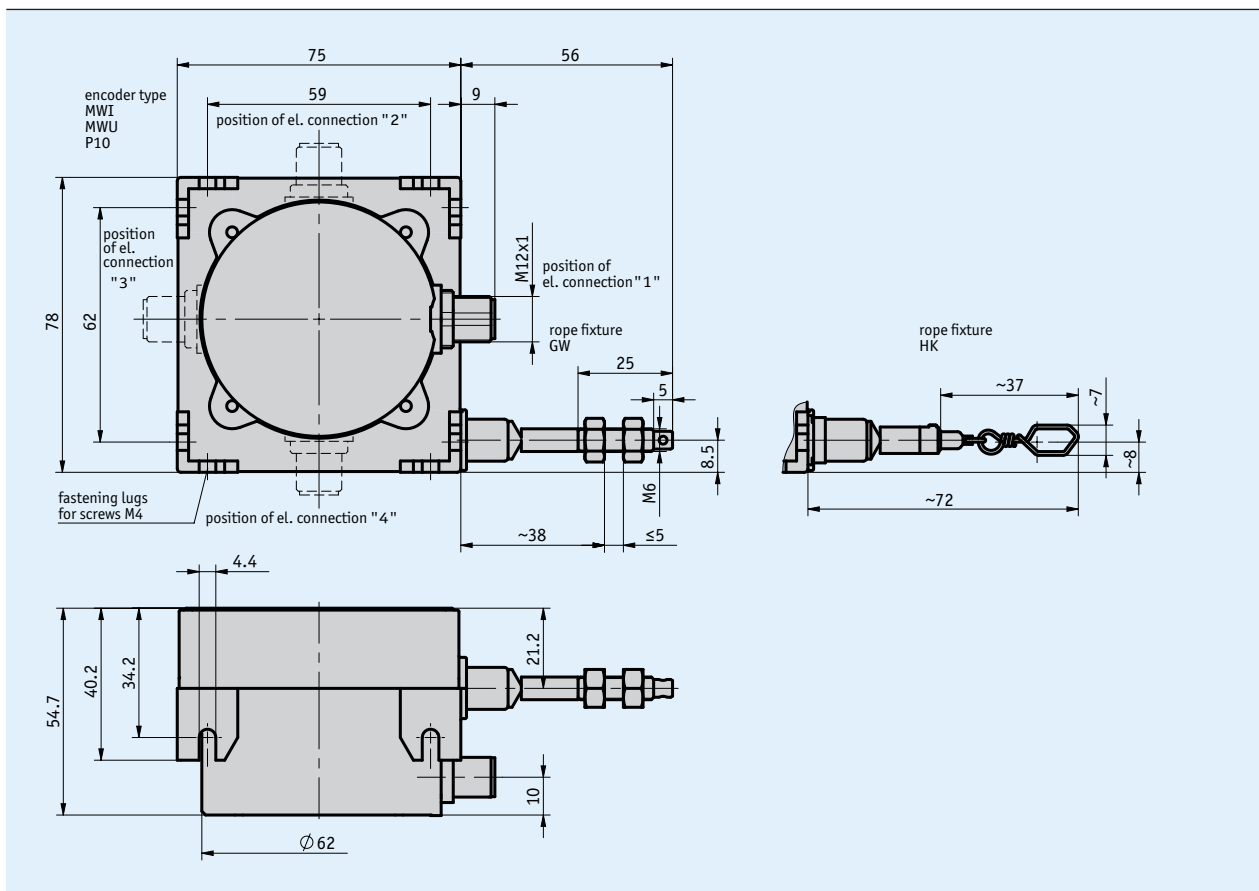
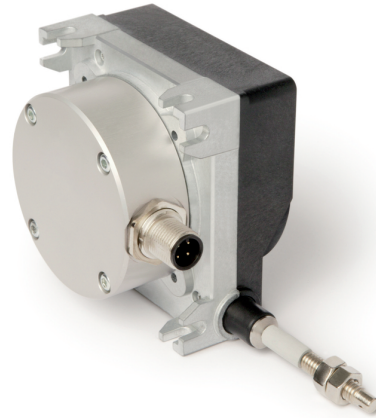


## Profile

- Compact, robust design
- Variable mounting options
- Measuring lengths up to 3000 mm
- Potentiometer, voltage or power output
- Housing made of zinc die-cast and plastic
- Lockable ventilation holes against condensation
- High tightness at the rope outlet
- M12 plug connection



## Mechanical data

Feature	Technical data	Additional information
Housing	zinc die-cast, plastic	
Wire design	<ul style="list-style-type: none"> <li>∅0.87 mm</li> <li>∅0.81 mm</li> </ul>	<ul style="list-style-type: none"> <li>steel wire (stainless), plastic coated</li> <li>steel wire (stainless)</li> </ul>
Extension force	≥3 N	
Cable length	<ul style="list-style-type: none"> <li>≤30 m</li> <li>≤20 m</li> </ul>	<ul style="list-style-type: none"> <li>P10, MWI encoder types</li> <li>MWU encoder type</li> </ul>
Weight	~0.5 kg	

## Electrical data

### Encoder potentiometer

Feature	Technical data	Additional information
Power rating	2 W at 70 °C	
Resistance	10 kΩ	
Resistance tolerance	±5 %	
Linearity tolerance	±0.25 %	
Type of connection	M12 plug connector (A-coded)	4-pole, 1x pin

### Transducer, power output

Feature	Technical data	Additional information
Operating voltage	10 ... 30 V DC	between I+ and I-, at ≤500 Ω load
Output current	4 ... 20 mA	
Type of connection	M12 plug connector (A-coded)	4-pole, 1x pin

### Transducer, voltage output

Feature	Technical data	Additional information
Operating voltage	15 ... 28 V DC	at 3 mA without load
Output voltage	0 ... 10 V DC	I <sub>load</sub> ≤10 mA
Resistance	2 ... 10 kΩ	against GND
Load	≤15 mA	
Type of connection	M12 plug connector (A-coded)	4-pole, 1x pin

\* Measurement transducers permit optimum adjustment of the output current and output voltage to the measuring range. The measurement transducer is pre-set at the works so that an output signal of 4 ... 20 mA (MWI) or 0 ... 10 V DC (MWU) is available.

## System data

Feature	Technical data	Additional information
Repeat accuracy	±0.15 mm	per direction of approach
Measuring range	≤3000 mm	
Travel speed	≤800 mm/s	

## Ambient conditions

Feature	Technical data	Additional information
Ambient temperature	-40 ... 80 °C	
Relative humidity		condensation inadmissible
Protection category	IP65 (encoder part)	EN 600529

## Pin assignment

### ■ Potentiometric outputs P10

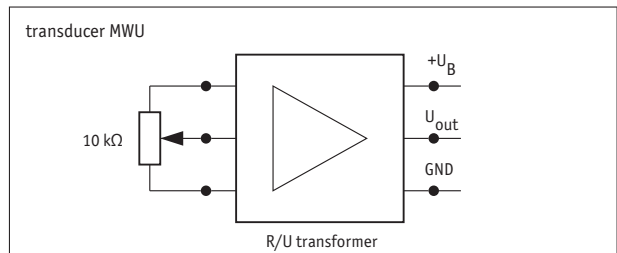
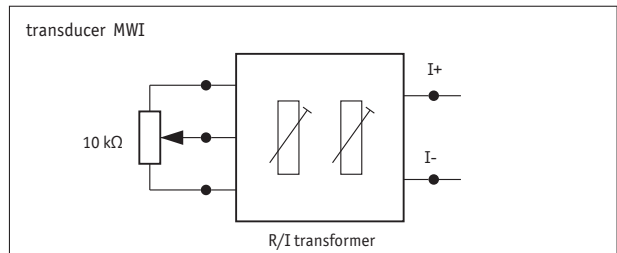
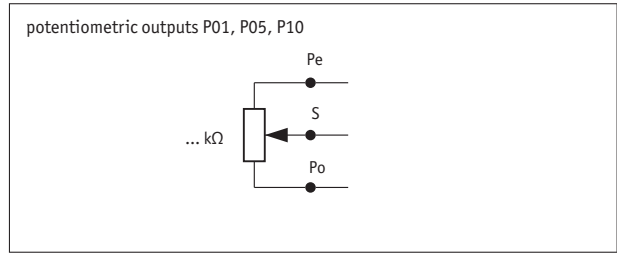
Signal	PIN
Po	1
Pe	2
S	3
	4

### ■ MWI transducer

Signal	PIN
I+	1
I-	2
nc	3
nc	4

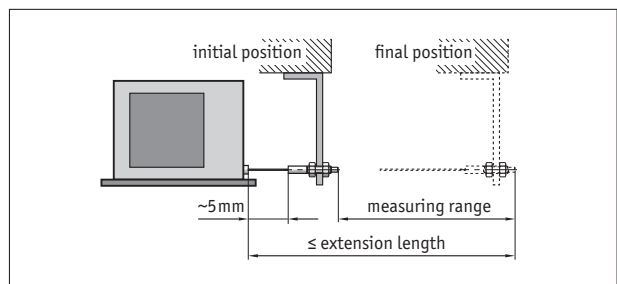
### ■ MWU transducer

Signal	PIN
+24 V DC	1
GND	2
U <sub>out</sub>	3
nc	4



## Hint for mounting

When securing the wire it must be ensured that the wire is straight and vertical in relation to the wire outlet.  
 Recommendation: Only select the starting position after an unwound length of approx. 5 mm. This prevents the wire hitting the end stop when it is rewound.



Symbolic representation

## Order

### Ordering table

Feature	Ordering data	Specification	Additional information
Measuring range	... <b>A</b>	2000, 2500, 3000 in mm	
Rope fixture	<b>GW</b>	wire suspension with thread	
	<b>HK</b>	wire suspension with hook	
Encoder type	<b>MWI</b>	transducer, current	
	<b>MWU</b>	transducer, voltage	
	<b>P10</b>	potentiometer	
Position of electrical connection	<b>1</b>	0 °	
	<b>2</b>	90 °	
	<b>3</b>	180 °	
	<b>4</b>	270 °	

### Order key



**Scope of delivery:** SG30

#### Accessories:

Electronic display MA50

[www.siko-global.com](http://www.siko-global.com)

Guide roller UR

[www.siko-global.com](http://www.siko-global.com)

Wire extension piece SV

[www.siko-global.com](http://www.siko-global.com)

Mating Connector Overview

[www.siko-global.com](http://www.siko-global.com)

Mating connector, P10, MWI, MWU, 4-pole, socket

Order key 83419

Mating connector, P10, MWI, MWU, 4-pole, socket

Order key 83526